



Contents:

- **certificate** (removable) **for:**
 - BMW M3 (F80) Saloon DampTronic** -
 - BMW M4 (F82/F83) Coupé/ Convertible DampTronic** -
- **mounting instruction**



**Before installation please observe
the following points:**

- Read all information in this manual carefully.
All suspension components are fitted and removed acc. to the manufacturer's specifications for installing and removal, if not otherwise required in these instructions.
- Check that your vehicle type is listed in the certificate as being specified for this kit.
- Check the product for all components before starting installation!
- Check that dimensions and fastening points are comparable between the original and BILSTEIN shock absorbers.
- Directional references (left, right, front, rear) are always with reference to the driving direction.
- Remove the negative battery pole.
- The tested vehicles are left- hand drive vehicles.
The installed location of the BILSTEIN DampTronic cable system is optional. The system components may be located anywhere in the vehicle in accordance with the specifications of manufacturer and BILSTEIN.

**After installation please observe
the following points:**

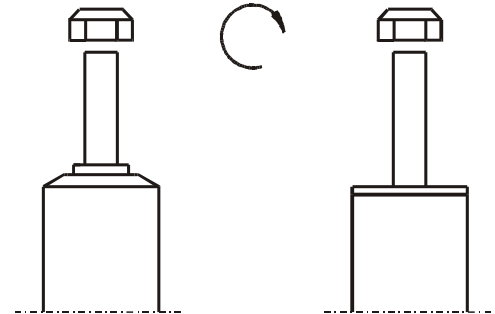
- Set the vehicle height by adjusting spring plates.
Only use the supplied spanner wrenches.
- All rubber- mounted strut/ damper attachments must not be fully tightened until AFTER the suspension system is loaded (wheels on the ground). Other mounting fasteners (for example brackets) must be securely tightened BEFORE load is placed on the suspension system.
Because the vehicle has been lowered, freedom of movement for all wheel-/ tire- combinations must be checked.
- Connect the negative battery pole.
- After installing the suspension system, caster and camber as well as sensors adjustment of the driver assistance systems (for example, radar sensor and camera systems) must be checked and adjusted according to manufacturer's specifications. Check and reset load- dependent brake compensator and ABS system according to manufacturer's specifications..
- Check and adjust headlight setting.



All diagrams are generalized
and not to scale!
brackets, etc. specific to
strut are not shown!

list of torques

	M 8	M 10	M 12	M 14	M 16	Thread
	13	25	45	72	110	Torque Nm
	10	19	34	54	83	Torque ft lb



**Do not use an impact tool to loosen
or tighten fasteners due to possible
damage to the product.
Self- locking nuts must only be
used once!**



mounting instruction for front axle left/ right

Removal

Place vehicle on a wheel- free car hoist, lift it and remove wheels.

Vehicles equipped **with xenon headlight** the movable element of sensor for the headlamp levelling controller must be removed before.

Pay attention that support wires of brake system are strain-free during removal. Stabilization by suitable means is demanded.

Remove bottom mounting.

If necessary release brake hose/ brake hose holder/ stabilizer/ ABS- hose and/ or swing- support at strut.

Detach cable connection from strut inside wheel housing.

Remove top fixing nuts from support bearing.

Do not remove central nut at this time!

Remove cable connection from strut. Remove complete strut, strip the bearing block from support bearing and clamp the strut in an appropriate strut vice.

Using a suitable spring compressor, compress suspension spring until support bearing is free to move.

Release centre nut and remove original mounting parts and coil spring. Please refer to diagram to identify which parts will be replaced with BILSTEIN- supplied components.

Installing

Fit original/ BILSTEIN mounting parts on strut cable assignment in reverse order to removal.

The original top spring pad must be reused after detaching the part of dust cover (see sketch on page 19)!

Fit assembled BILSTEIN strut to the vehicle in reverse order to removal.

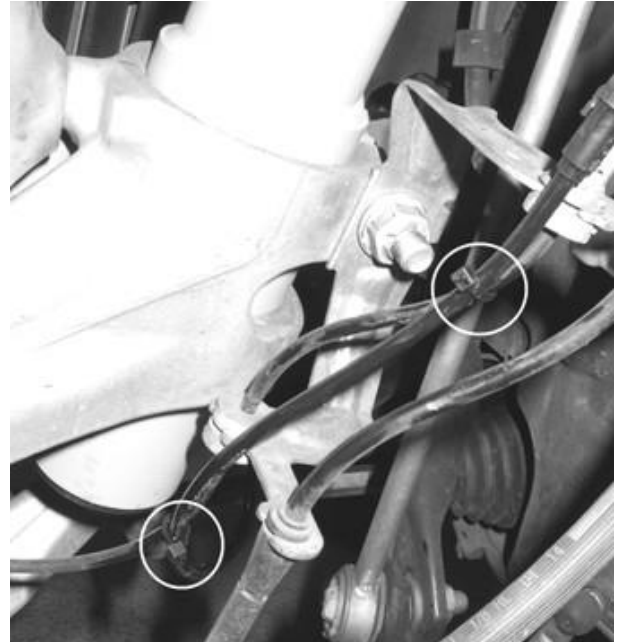


Installation of cable harness for electromagnetic valve B16 DampTronic

Connect the adapter cable delivered by BILSTEIN to the plug at BILSTEIN strut. Lead the cable through wheelhouse opening (Arrow;pic 1) and fix it to the original cabel harness by using cable clips (pic.2).



pic 1



pic 2



Fit the cable along dome on top. Bild/
pic 3





front axle hight adjustment

fixing hight adjustment

Install the hight adjustment as it is shown in sketch for front axles. Fix the spring plate with the set screw **(1)** by using hex key **(2)** delivered by BILSTEIN.

Torque 7 +1 Nm.

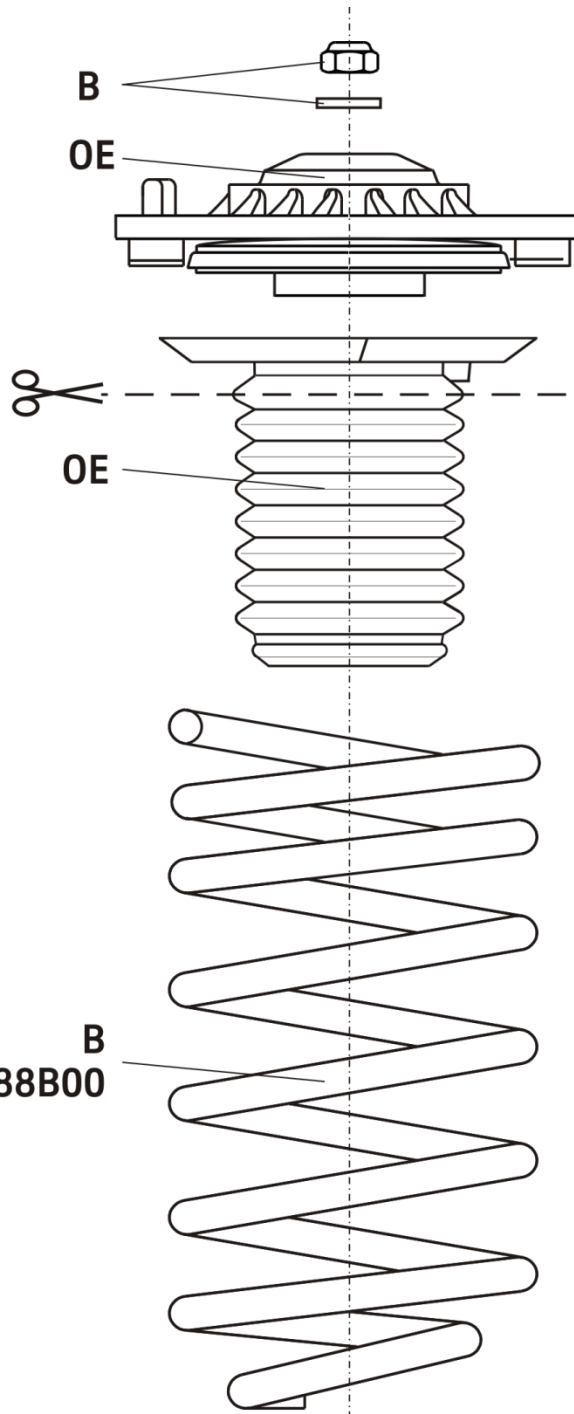


- **certificate** (removable):

BMW M3 (F80) Saloon DampTronic -
BMW M4 (F82/F83) Coupé/ Convertible DampTronic -

OE= Original Equipment

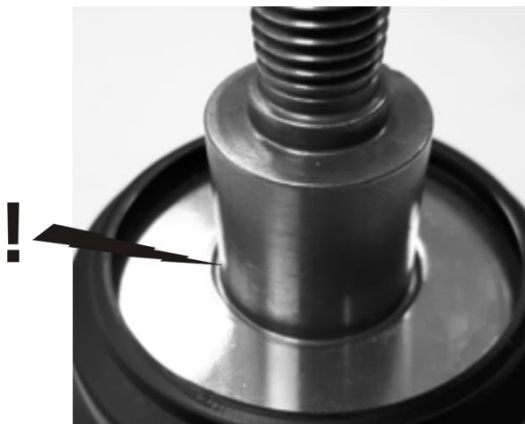
B= Delivered by BILSTEIN



B
E4-FD1-Y088B00

1

falsch/ wrong

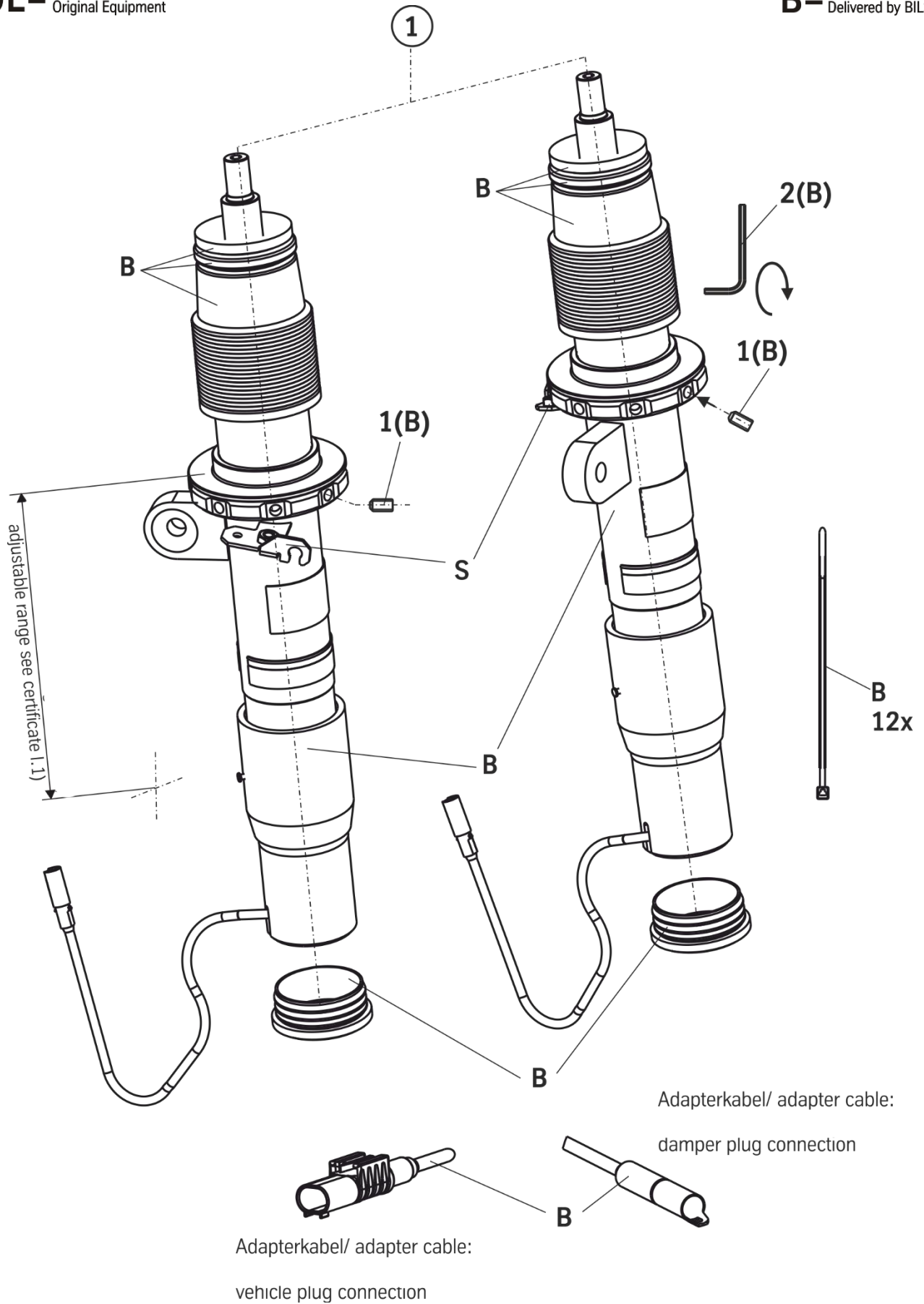


richtig/ correct



OE= Original Equipment

B= Delivered by BILSTEIN



Adapterkabel/ adapter cable:
damper plug connection

Adapterkabel/ adapter cable:
vehicle plug connection

Removal

Place vehicle on a wheel- free car hoist, lift it and remove wheels.

Pay attention that support wires of brake system are strain-free during removal. Stabilization by suitable means is demanded.

Remove top and bottom mounting from support bearing.

Remove original shock absorber.

Remove original mounting parts. Please refer to diagram to identify which parts will be replaced with BILSTEIN- supplied components.

Installation

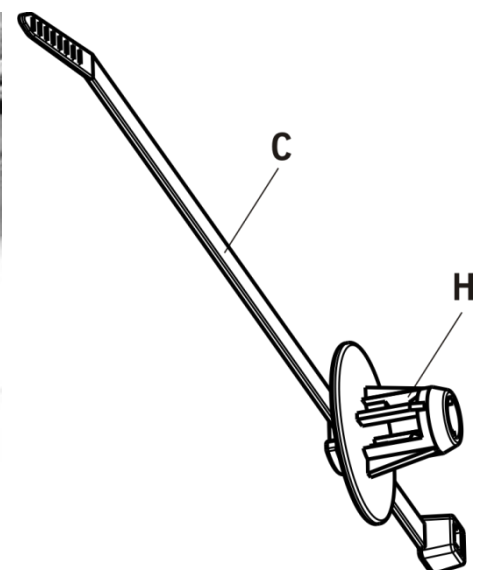
Fit BILSTEIN mounting parts on BILSTEIN shock absorber in reverse order to removal

Fit assembled BILSTEIN shock absorber to the vehicle in reverse order to removal.

Cable for Acceleration Sensor

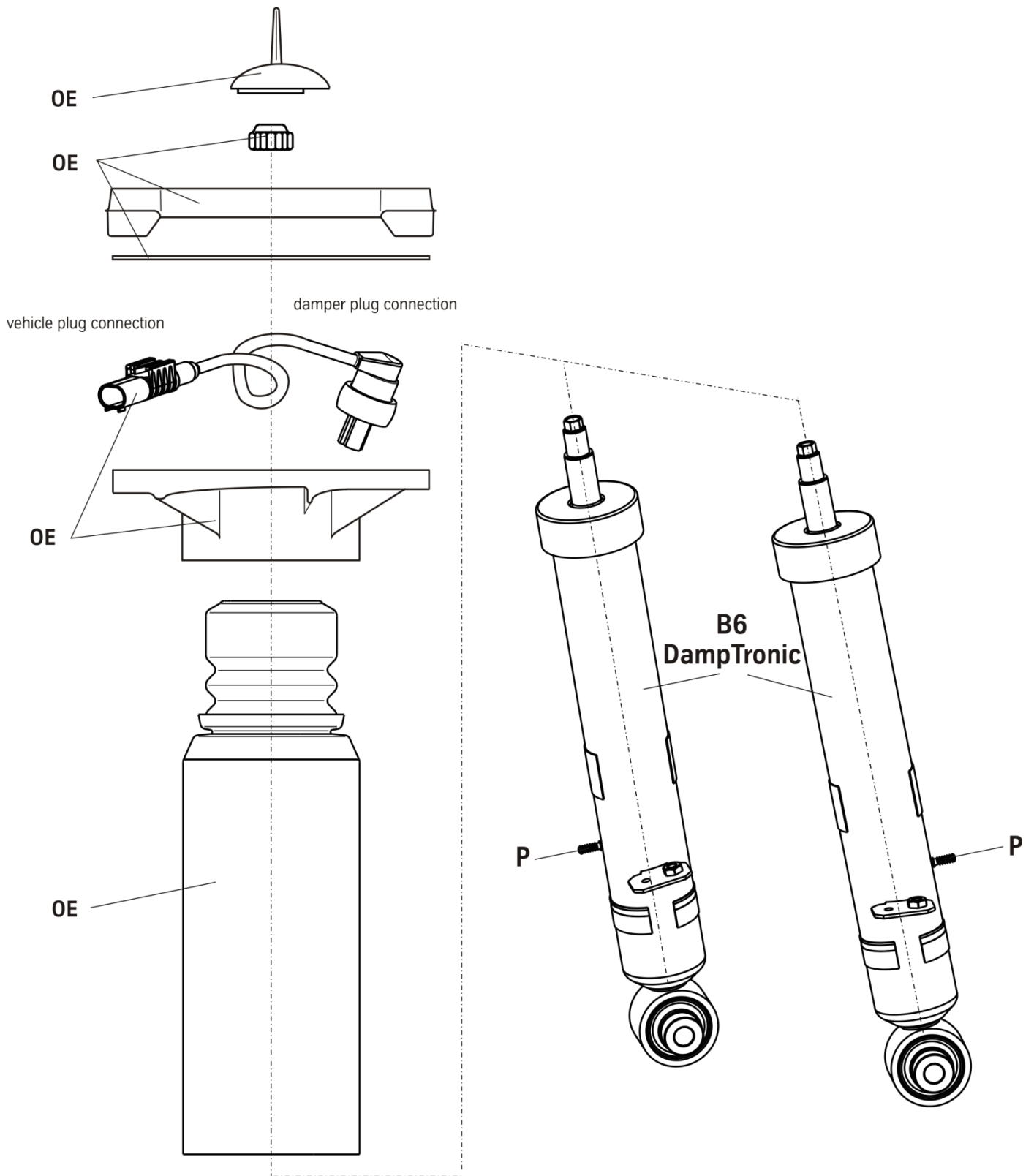
Fix the plug connection to welded pin (**P**) with the delivered cable clips (**C**) to the shock absorber. The cable clip sockets (**H**) must snap into the welded pins (**P**).

The cable clip sockets can be removed from welded pins non-destructive by rotation.



OE= Original Equipment

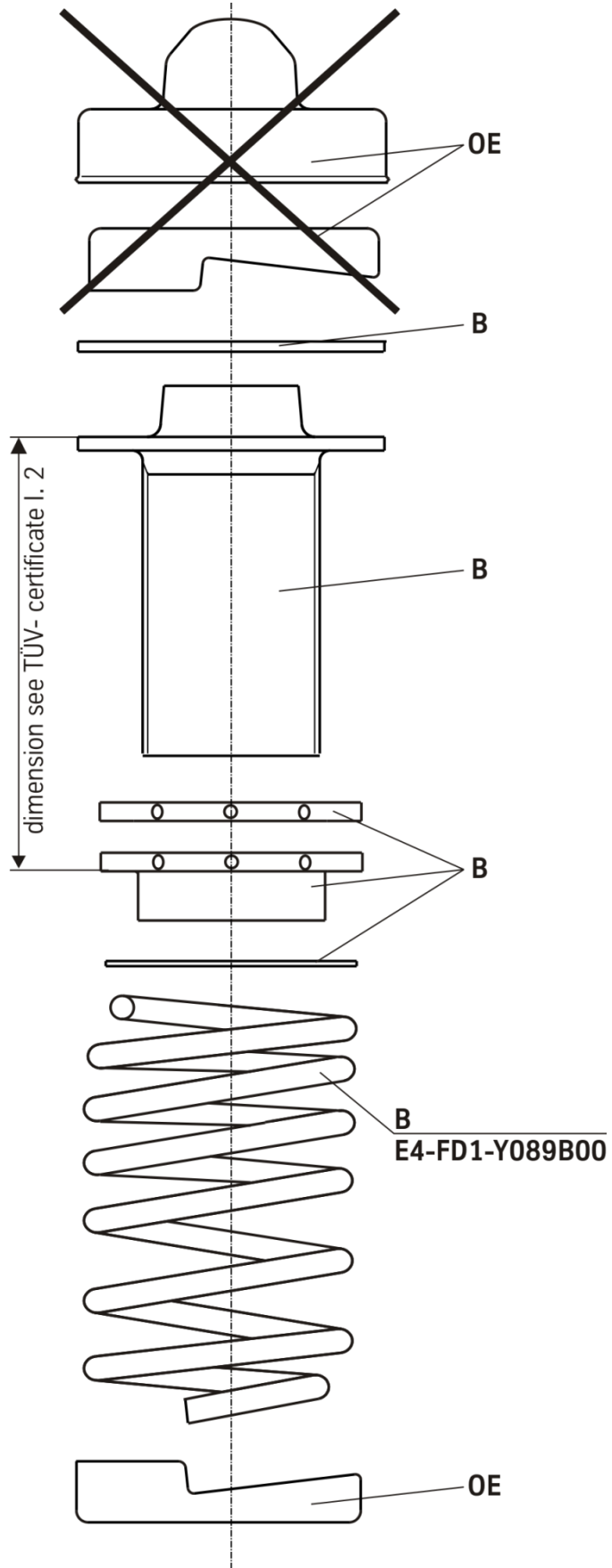
B= Delivered by BILSTEIN



-mounting instruction for rear axle height adjustment

OE= Original Equipment

B= Delivered by BILSTEIN



Learn more about performance suspension parts we have.