



**Contents:**

- **Certificate for:**

**SUBARU Impreza WRX STI (from 04.2016) B16 PSS10**

- **mounting instruction**



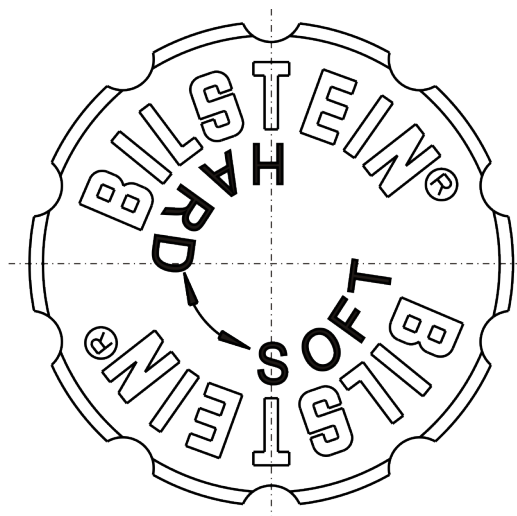
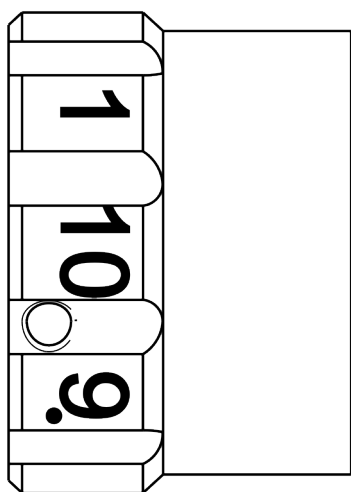
**Before installation please observe the following points:**

- Read all information in this manual carefully.  
All suspension components are fitted and removed acc. to the manufacturer's specifications for fitting and removal, if not otherwise required in these instructions.
- Check that your vehicle type is listed in the certificate as being specified for this kit.
- Check the product for all components before starting installation!
- Check that dimensions and fastening points are comparable between the original and BILSTEIN shock absorbers.
- Directional references (left, right, front, rear) are always with reference to the driving direction.  
The test vehicles are left- hand drive cars.
- Disconnect the negative battery pole.

**After installation please observe the following points:**

- Set the vehicle height by adjusting spring plates and lock nuts on the new dampers. Only use the supplied spanner wrenches.
- After installing the suspension system, caster and camber must be checked and adjusted according to manufacturer's specifications.  
Check and reset load- dependent brake compensator and ABS system according to manufacturer's specifications.  
Check and adjust headlight setting.
- Because the vehicle has been lowered, Ground clearance for all wheel-/ tire- combinations must be checked.
- All rubber- mounted strut/ damper attachments must not be fully tightened until AFTER the suspension system is loaded (wheels on the round). Other mounting fasteners (for example brackets) must be securely tightened BEFORE load is placed on the suspension system.  
Connect the negative battery pole again.
- All diagrams are generalized and not to scale!  
Brackets, etc. specific to strut are not shown!

**instruction for force adjustment**



position **1** = **comfort**  
 position **10** = **sport**

During the adjustment you will hear a positive „click“ at each position of the adjustment.

**Instruction for the front axle**

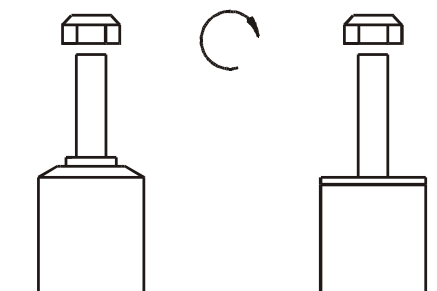
The adjusting element of the front struts is located at the bottom edge of the strut.

Adjusting position must aligned with the red mark on outer tube.

Status of delivery is position **1**.

**list of torques**

	M8	M 10	M 12	M 14	M 16	Thread
	13	25	45	72	110	Torque Nm
	10	19	34	54	83	Torque ft lb



**Do not use an impact tool to loosen or tighten fasteners due to possible damage to the product.**  
**Self- locking nuts must only be used once!**

## Removal strut

Place vehicle on a wheel-free car hoist, lift it and remove wheels.

Vehicles equipped with xenon headlight the sensor for the headlamp levelling controller must removed before.



**Pay attention that support wires of brake system are strain-free during removal. Stabilization by suitable means is demanded.**

Remove bottom mount.

Remove top fixing nuts from support bearing.  
**Do not remove centre nut at this time!**

Remove complete strut and clamp it in an appropriate strut vice.

Using a suitable spring compressor, compress suspension spring until tension on support bearing is free to move.

Release centre nut and remove original mounting parts and coil spring. Please refer to diagram to identify which parts will be replaced with BILSTEIN- supplied components.

## Installing strut

Assemble BILSTEIN and/ or original mounting parts, as well as the new BILSTEIN spring on the BILSTEIN strut in reverse order of removal.



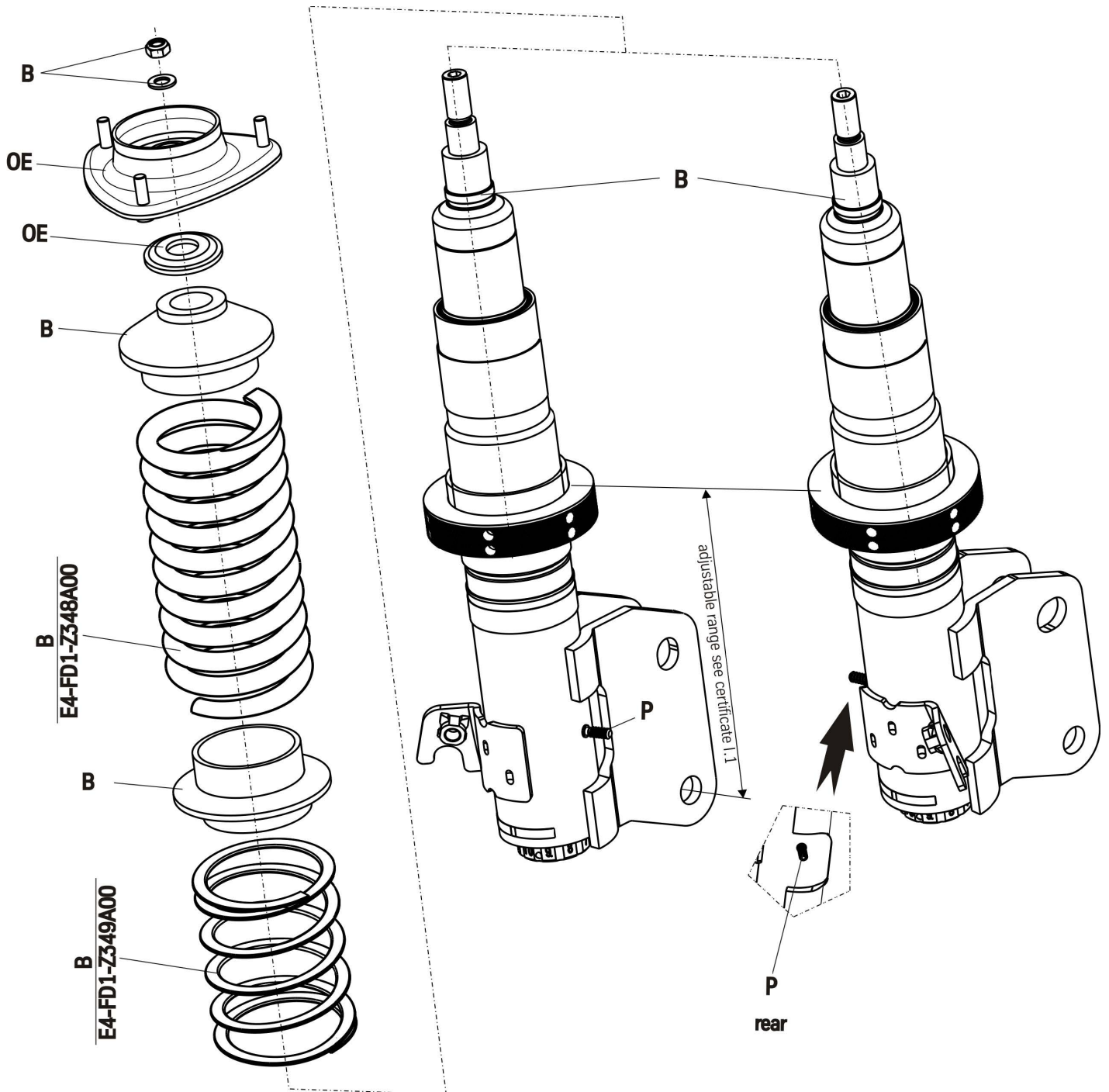
**IMPORTANT! Spring plates must not be adjusted outside the ranges specified below!**

The correct mounting position of the suspension springs can be determined by the printing on the springs; install them with the print upright.

Fit assembled BILSTEIN strut to the vehicle in reverse order of removal.

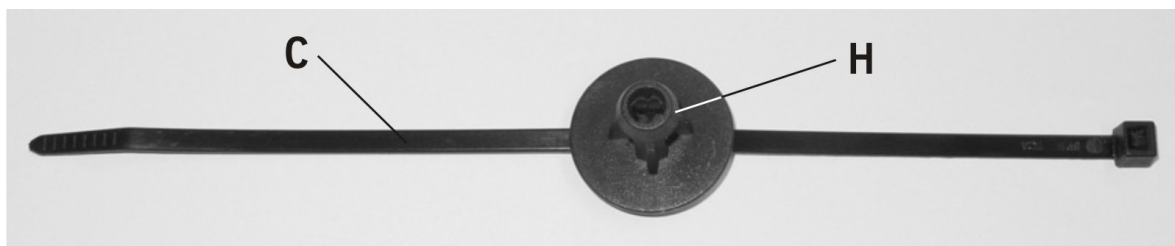
**OE** = Original Equipment

**B** = Delivered by BILSTEIN



Remove original ABS clips and fit ABS wire strain-free using clips (pic 1) delivered by BILSTEIN.

Do the fitting with maximum steer angle!



**Pic 1**

## Remove shock absorber

Place vehicle on a wheel-free car hoist, lift it and remove wheels.



**Pay attention that support wires of brake system are strain-free during removal. Stabilization by suitable means is demanded.**

Remove bottom mount.

Remove top fixing nuts from support bearing.  
**Do not remove centre nut at this time!**

Remove complete shock absorber and clamp it in an appropriate strut vice.

Compress suspension spring until tension on support bearing is free to move.

Release centre nut and remove original mounting parts and coil spring. Please refer to diagram to identify which parts will be replaced with BILSTEIN- supplied components.

### Notes for installation B16 PSS10

Drill a hole of  $\varnothing$  12 mm into original support bearing (see sketch on page 22).

Cut the side carpeting inside baggage compartment near wheelhouse like shown on pic. 1 and 2.

The correct mounting position of the suspension springs can be determined by the printing on the springs.



**Bild\_1**



**Bild\_2**

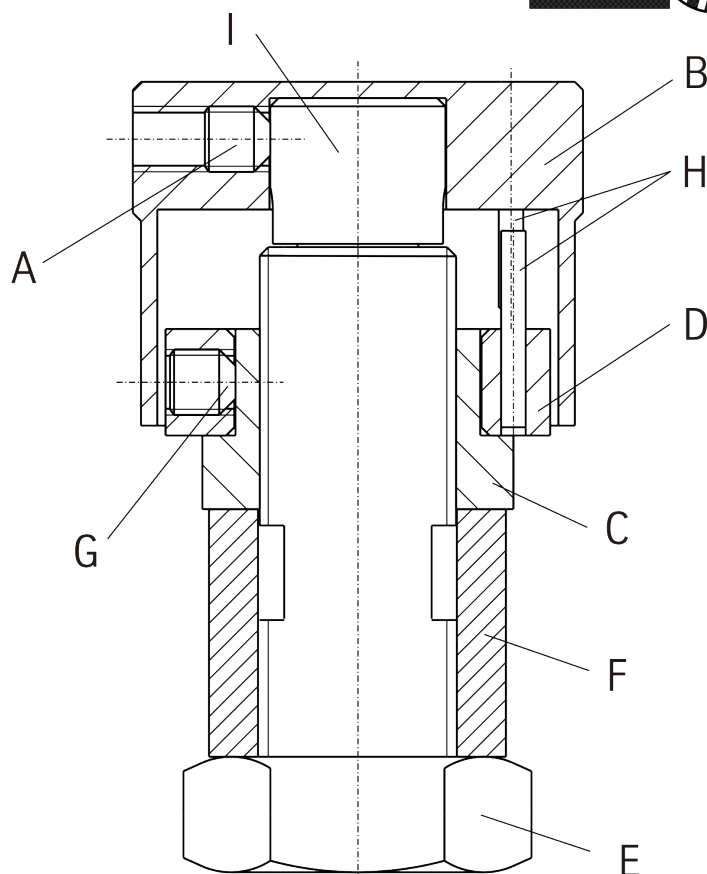


### **PSS10- 10 step- pin adjustment**

The adjustment unit must be deinstall before the shock absorber installation can be completed in reverse order with BILSTEIN and/ or original mounting parts.



- A** Set screw
- B** Adjusting head
- C** lock nut M12x 1
- D** End stop disc
- E** Nut M12x1
- F** sleeve
- G** Set screw
- H** End stop pin
- I** Adjusting screw



position **1** = **comfort**  
 (counter- clockwise direction)  
 position **10** = **sport**  
 (clockwise direction)

**Instruction for the rear axle**  
 Status of delivery is position **10**.



## Removal Adjustment Unit PSS10

To remove the adjusting head (B) the set screw must loose.

Remove the lock nut (C) together with end stop disc (D).

Now remove all original mounting parts and fit BILSTEIN and/ or original mounting parts in reverse order to removal (see fig. on page 20)

## Installing Adjustment Unit PSS10

Tighten (E) to block and fit lock nut (C) together with end stop disc (D).

Getting an optimal fitting position for the adjustment unit you can also loose the set screw (G) and turn the end stop disc (D) in a position to a saliently mark at the chassis you have selected before. Fix the set screw again. Pins (H) are end stops.

Place the adjusting knob (A) flat on the adjusting screw (I) and turn it clockwise to end stop.

Fix the adjusting head (B) with set screw (A).

The adjusting head should move easily and with distinct "clicks" at each adjustment position. If not, disassemble the adjustment unit and reassemble acc. to the instruction.

## Installing shock absorber

Drill a hole of  $\varnothing$  12 mm into original support bearing:

Assemble BILSTEIN and/ or original mounting parts, as well as the new BILSTEIN spring on the BILSTEIN strut in reverse order to removal.



**IMPORTANT! Spring plates must not be adjusted outside the ranges specified below!**

Fit assembled shock absorber to the vehicle in reverse order to removal.



**OE** = Original Equipment

**B** = Delivered by BILSTEIN

