



Contents:

- **Certificate** (removable) **for:**

FIAT 500X (4WD) B14 -

JEEP Renegade (4WD) B14 -

mounting instruction -



Before installation please observe the following points:

- Read all information in this manual carefully.
All suspension components are fitted and removed acc. to the manufacturer's specifications for installing and removal, if not otherwise required in these instructions.

- Check that your vehicle type is listed in the certificate as being specified for this kit.

- Check the product for all components before starting installation!
- Check that dimensions and fastening points are comparable between the original and BILSTEIN shock absorbers.
- Directional references (left, right, front, rear) are always with reference to the driving direction.
- Remove the negative battery pole.
- The tested vehicles are left- hand drive vehicles.

After installation please observe the following points:

- Set the vehicle height by adjusting spring plates and lock nuts* on the new dampers. Only use the supplied spanner wrenches.

- After installing the suspension system, caster and camber must be checked and adjusted according to manufacturer's specifications.
Check and reset load- dependent brake compensator and ABS system according to manufacturer's specifications.
Check and adjust headlight aim.

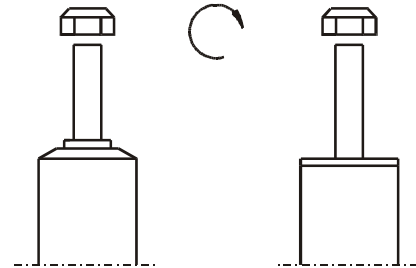
- Because the vehicle has been lowered, freedom of movement for all wheel-/ tire- combinations must be checked.
- All rubber- mounted strut/ damper attachments must not be fully tightened until AFTER the suspension system is loaded (wheels on the ground). Other mounting fasteners (for example brackets) must be securely tightened BEFORE load is placed on the suspension system.
- Connect the negative battery pole.

* optionally: locking device by using setscrews

All diagrams are generalized
and not to scale!
brackets, etc. specific to
strut are not shown!

list of torques

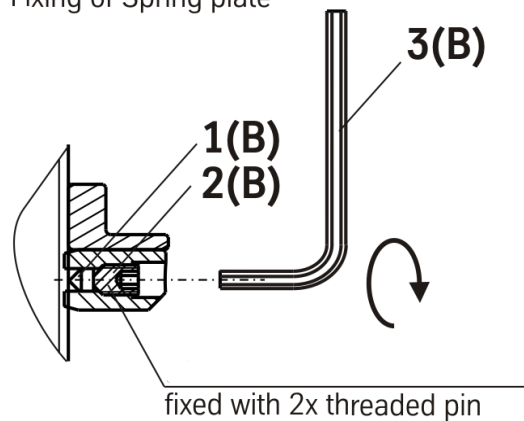
	M 8	M 10	M 12	M 14	M 16	Thread
	13	25	45	72	110	Torque Nm
	10	19	34	54	83	Torque ft lb



**Do not use impact tools for loosening
or tightening fasteners, because
this may destroy the threads.
Self- locking nuts must only be
used once!**

Detail

Fixing of Spring plate



Fix the spring plate with the rubber pins/
balls (1) and set screw (2) by using the aux-
iliary tool (hex key (3)).

The tightening torque 7+1Nm has to be real-
ized with suitable tooling.

After several adjustments (approx. 5-10
times) the rubber bullets/pins should be re-
placed, otherwise the thread on damper tube
might be damaged.

In cases of loss or damage of the bullets/ pins
it is possible to make replacement pins out of
a commercially available O-ring:

Cross section: 4,5mm; cut length: 5,2mm;
material: NBR 80



Mounting instruction for both axles (left/right)

Removal

Place vehicle on a wheel-free-car hoist, lift it and remove wheels.

Vehicles equipped **with xenon headlight** the movable element of sensor for the headlamp levelling controller must be removed before.

Pay attention that support wires of brake system are strain-free during removal. Stabilization by suitable means is demanded.

Remove bottom mount.

If necessary release brake hose/ brake hose holder/ stabilizer/ ABS- hose and/ or swing-support at strut.

Remove top mount from support bearing.

Remove complete strut and clamp it in an appropriate strut vice.

Using a suitable, licensed spring compressor, compress suspension spring until tension on support bearing is free to move.

Release centre nut and remove original mounting parts and coil spring. Please refer to diagram to identify which parts will be replaced with BILSTEIN- supplied components.

Installation

Assemble BILSTEIN and/ or original mounting parts, as well as the new BILSTEIN spring on the BILSTEIN strut in reverse order as removal.

IMPORTANT! Spring plates must not be adjusted outside the ranges specified below! Do not damage the piston rod when knocking on the cap (see fig.1)! The spring seats are fixed with rubber bullets and setscrews. After several adjustments (around 5 - 10 times) the rubber bullets should be replaced, otherwise the thread from the dampers can be damaged. Suggestion: after any adjustment should the rubber bullet be replaced

The correct mounting position of the suspension springs can be determined by the printing on the springs; install them with the print upright.

Fit assembled BILSTEIN strut to the vehicle in reverse order as removal.



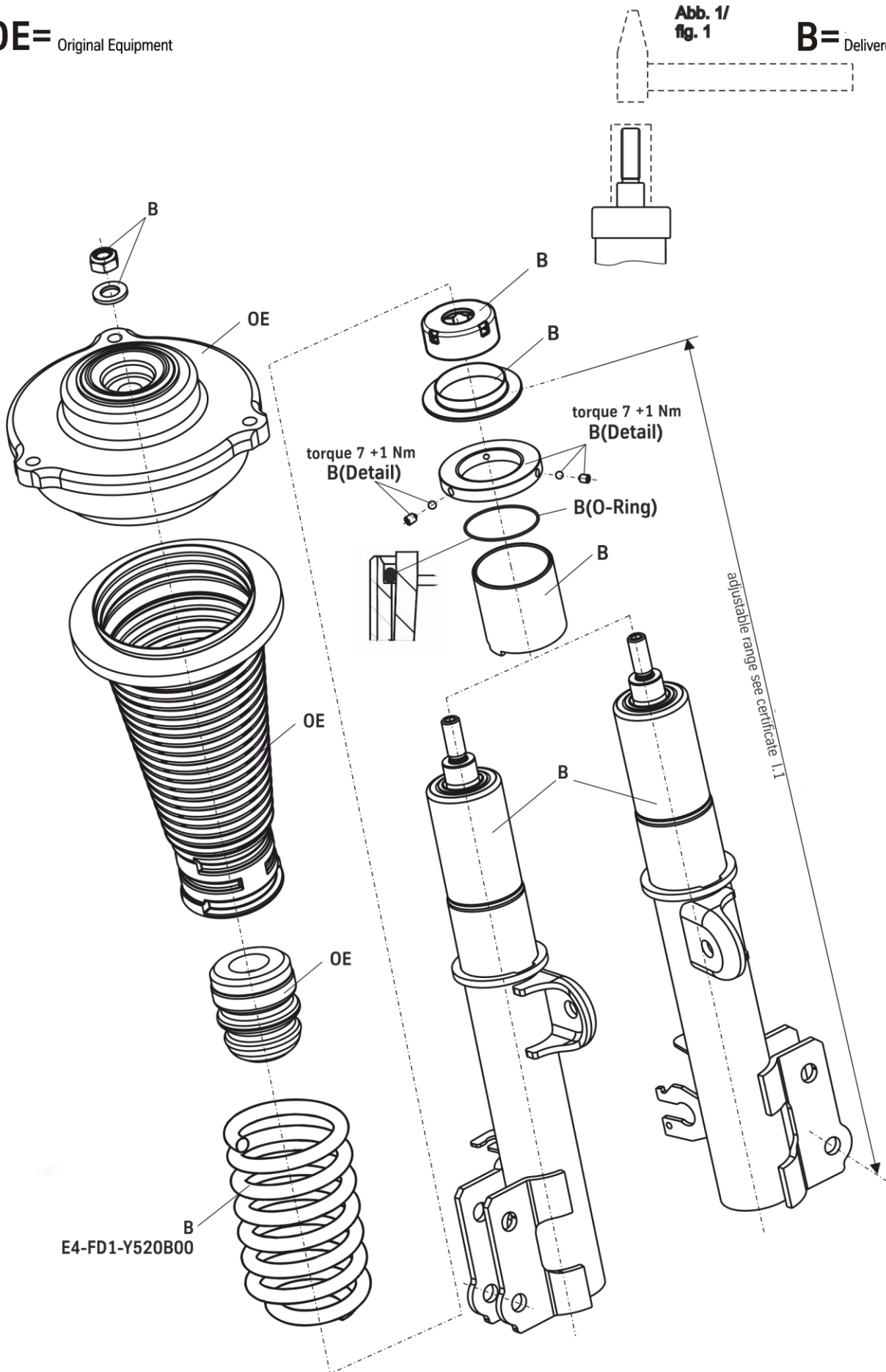
- **certificate for:**

FIAT 500X (4WD) B14 -
JEEP Renegade (4WD) B14 -

OE= Original Equipment

Abb. 1/
fig. 1

B= Delivered by BILSTEIN



OE= Original Equipment

Abb. 1/
fig. 1

B= Delivered by BILSTEIN

