

# INSTALLATION INSTRUCTIONS.



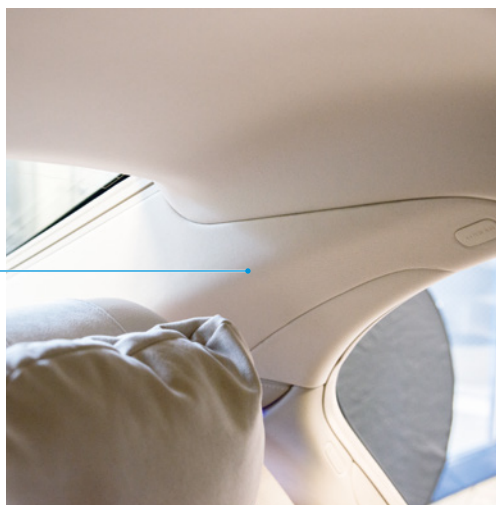
# INSTALLATION INSTRUCTIONS.

## General information:

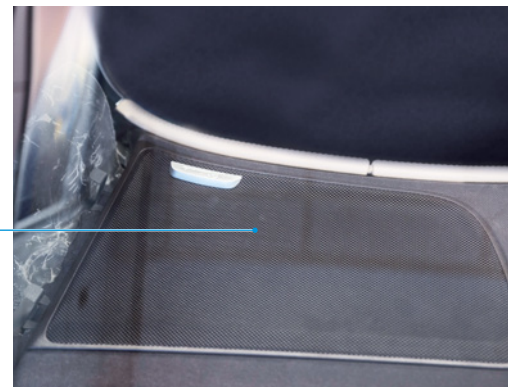
- Do not store the spring struts below -15°C or above +50°C
- Installation and removal may only be carried out by trained personnel in a specialist workshop
- Tools and equipment from the vehicle manufacturer are required for converting
- The appropriate personal protective equipment (e.g. safety glasses, gloves) must be worn at all times when working on the vehicle
- Check wires and cables for damage and, where necessary, replace them
- Complete a detailed check of the entire suspension for damage
- Caution: Deviations in the conversion and/or not following the prescribed order can result in damage to the vehicle and the air suspension module!
- BILSTEIN shock absorbers should always be replaced in pairs
- Never fully release the vehicle from the lifting platform with an unpressurised air suspension module

## Removal of the rear air suspension module

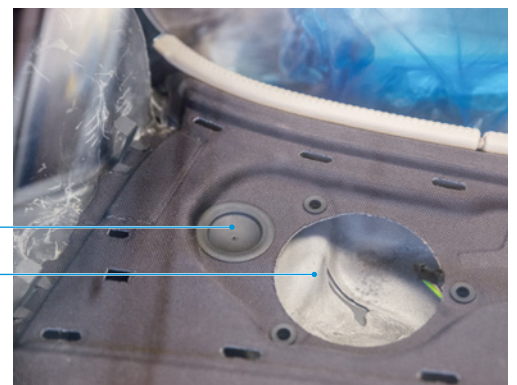
- Measure the length of the BILSTEIN air suspension module. Length > 885 mm = OK
- Observe the expiry date
- Remove the cladding from the C-pillar **1** from the side
- Be aware of the airbag system behind the cladding when doing so



- Take out the loudspeaker cover **2**, and where necessary remove the loudspeaker underneath

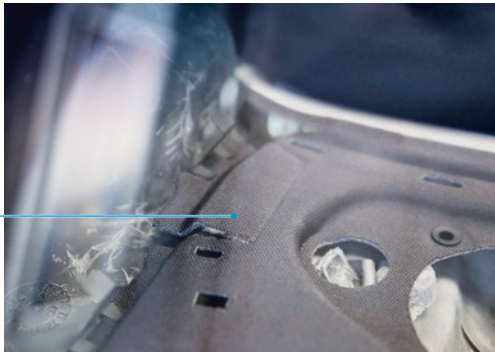


- Take out the plug **3** and use a suitable tool to cut out and remove the insulation underneath **4**



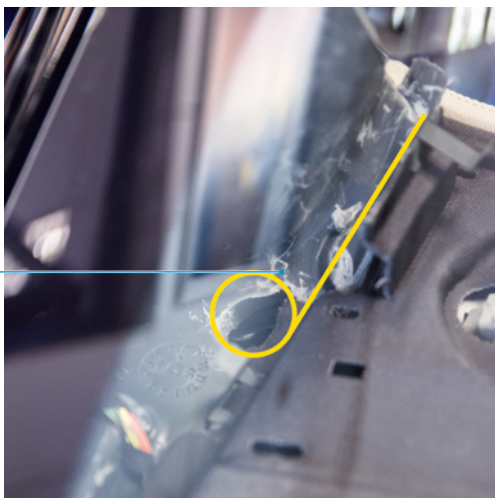
- Cut laterally into the service flap **5** and lift upwards

5



- Using a suitable tool, carefully cut into the insulation underneath 6 at the edge of the parcel shelf along the markings shown and/or carefully cut into the pre-existing perforations on the component and fold back, paying attention to the electrical wires

6



Use the lifting platform positioning points as stipulated by the vehicle manufacturer. Risk of death from vehicle slippage.

- Raise up the vehicle
- Connect the diagnostic system and switch on the ignition
- Completely release the pressure from the air suspension module via the diagnostic system



The ignition must remain switched off while working on the air suspension module.

- Clean the pressure pipe connector 7 at the top of the air suspension module
- Unscrew the pressure pipe connector at the spring strut



**CAUTION** air pressure! Slowly loosen the connection and allow the pressure to leak away completely before fully dismantling the air pipe.



Do not bend, twist or crush the pressure pipe.

- While working on the pressure pipe, seal with filler plugs

7



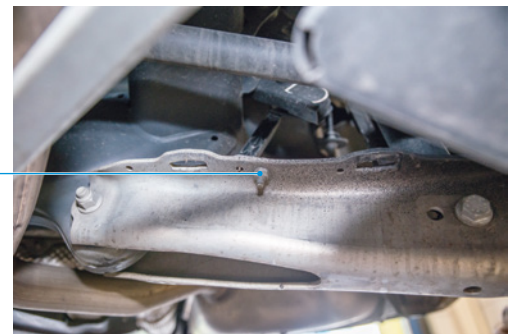
- Remove the corresponding wheels
- Remove the cover 8 from the transverse link

8



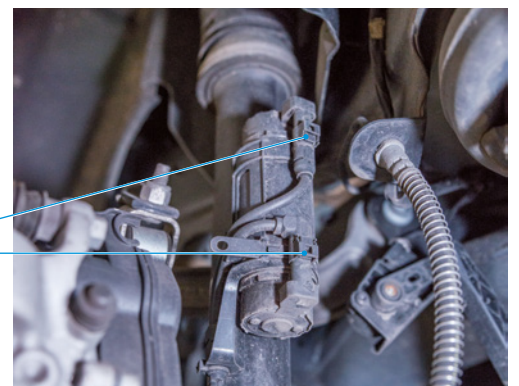
- Disassemble the connection to the height sensor 9 at the traverse link

9



- Disconnect the air suspension module's connecting wire 10 and decouple it from the bracket

10

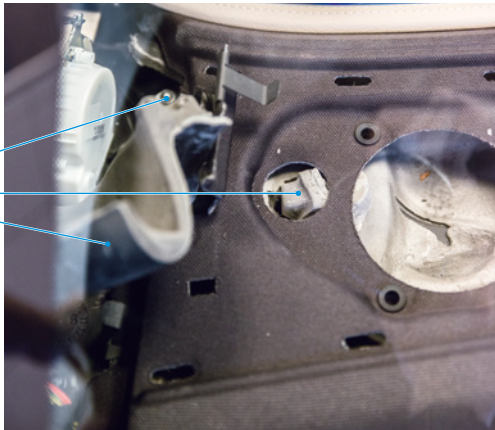


- Disconnect the screw connection 11 on the transverse link and dismount the transverse link



Secure the air suspension module against falling

- Remove the air suspension module's screw connections 12 at the top



- Pull the air suspension module downwards and remove

## Installation of the rear air suspension module



Completely tighten all moveable, suspension-relevant parts only once in roadworthy condition. In doing so, follow the specifications and tightening torques specified by the vehicle manufacturer.

- Replace screws and self-locking nuts according to the manufacturer's specifications
- Installation is to take place in reverse order, analogous to the removal
- Insulation which has been removed must be reinstalled
- Remove the screw connection on the pressure pipe connection of the new air suspension module before assembly of the pressure pipe
- Pay attention to the tightening torque of the air pipe!



Never fully release the vehicle from the lifting platform with an unpressurised air suspension module.

- Connect the diagnostic system and switch on the ignition
- Fill the air suspension module via the diagnostic system
- Check the system for leakages
- Release the vehicle on the lifting device until it is at construction level. Activate the lifting mode and wait for the vehicle to lift up. Only then is a complete lowering of the vehicle permissible
- When rebuilding, fully tighten loosened screw connections according to the specifications of the vehicle manufacturer
- Where necessary, reconfigure the vehicle's height regulation

**Note:** BILSTEIN accepts no responsibility for damage to vehicles and their parts due to improper replacement. Any kind of change to the air suspension module will invalidate the warranty!