

INSTALLATION INSTRUCTIONS.



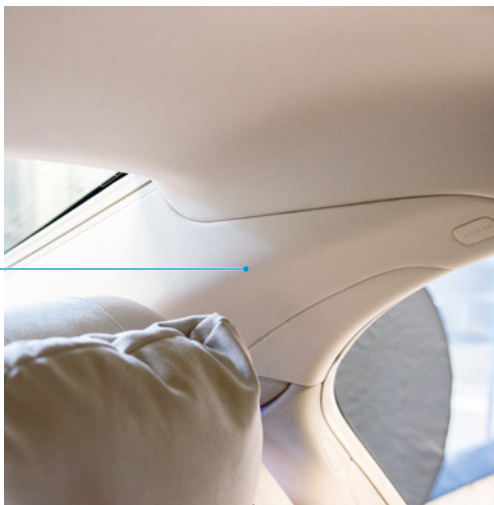
EN INSTALLATION INSTRUCTIONS.

General information:

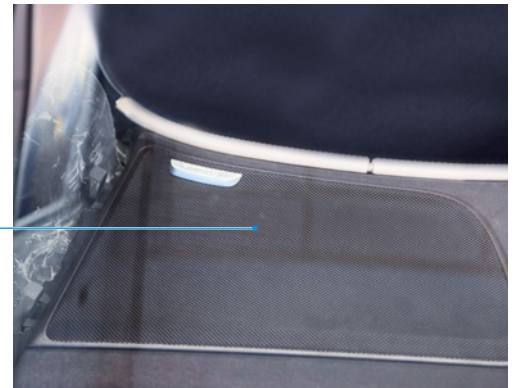
- Do not store the spring struts below -15°C or above +50°C
- Installation and removal may only be carried out by trained personnel in a specialist workshop
- Tools and equipment from the vehicle manufacturer are required for converting
- The appropriate personal protective equipment (e.g. safety glasses, gloves) must be worn at all times when working on the vehicle
- Check wires and cables for damage and, where necessary, replace them
- Complete a detailed check of the entire suspension for damage
- Caution: Deviations in the conversion and/or not following the prescribed order can result in damage to the vehicle and the air suspension module!
- BILSTEIN shock absorbers should always be replaced in pairs
- Never fully release the vehicle from the lifting platform with an unpressurised air suspension module

Removal of the rear air suspension module

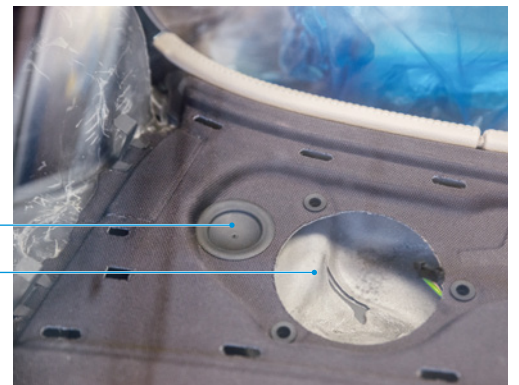
- Measure the length of the BILSTEIN air suspension module. Length > 885 mm = OK
- Observe the expiry date
- Remove the cladding from the C-pillar **1** from the side
- Be aware of the airbag system behind the cladding when doing so



- Take out the loudspeaker cover **2**, and where necessary remove the loudspeaker underneath

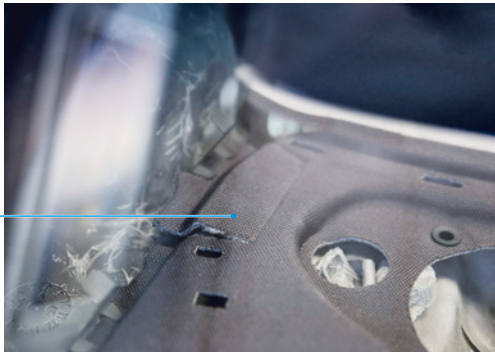


- Take out the plug **3** and use a suitable tool to cut out and remove the insulation underneath **4**



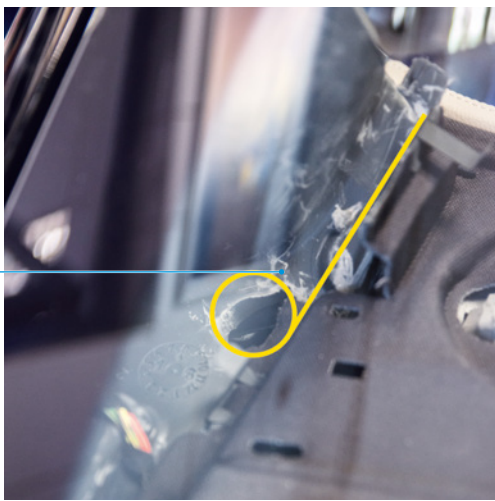
- Cut laterally into the service flap **5** and lift upwards

5



- Using a suitable tool, carefully cut into the insulation underneath **6** at the edge of the parcel shelf along the markings shown and/or carefully cut into the pre-existing perforations on the component and fold back, paying attention to the electrical wires

6



Use the lifting platform positioning points as stipulated by the vehicle manufacturer. Risk of death from vehicle slippage.

- Raise up the vehicle
- Connect the diagnostic system and switch on the ignition
- Completely release the pressure from the air suspension module via the diagnostic system



The ignition must remain switched off while working on the air suspension module.

- Clean the pressure pipe connector **7** at the top of the air suspension module
- Unscrew the pressure pipe connector at the spring strut



CAUTION air pressure! Slowly loosen the connection and allow the pressure to leak away completely before fully dismantling the air pipe.



Do not bend, twist or crush the pressure pipe.

- While working on the pressure pipe, seal with filler plugs

7



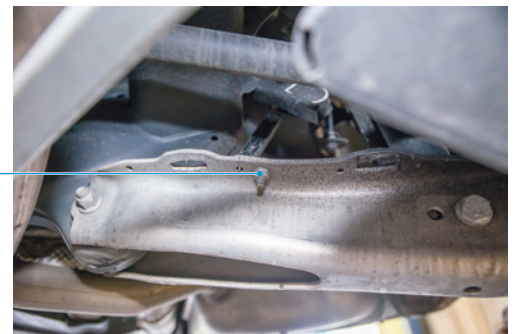
- Remove the corresponding wheels
- Remove the cover **8** from the transverse link

8



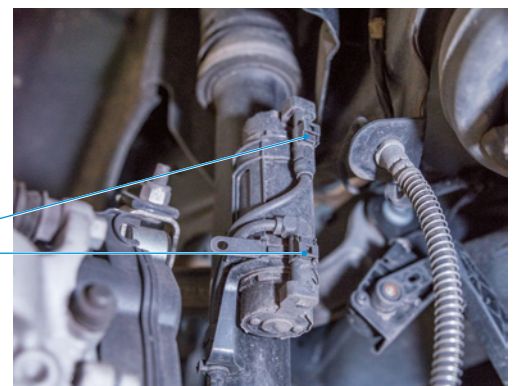
- Disassemble the connection to the height sensor **9** at the traverse link

9



- Disconnect the air suspension module's connecting wire **10** and decouple it from the bracket

10

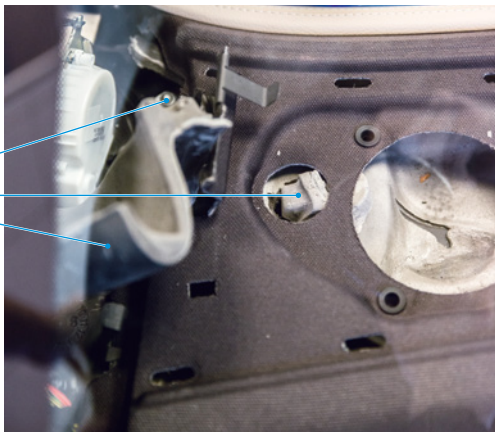


- Disconnect the screw connection 11 on the transverse link and dismount the transverse link



Secure the air suspension module against falling

- Remove the air suspension module's screw connections 12 at the top



- Pull the air suspension module downwards and remove

Installation of the rear air suspension module



Completely tighten all moveable, suspension-relevant parts only once in roadworthy condition. In doing so, follow the specifications and tightening torques specified by the vehicle manufacturer.

- Replace screws and self-locking nuts according to the manufacturer's specifications
- Installation is to take place in reverse order, analogous to the removal
- Insulation which has been removed must be reinstalled
- Remove the screw connection on the pressure pipe connection of the new air suspension module before assembly of the pressure pipe
- Pay attention to the tightening torque of the air pipe!



Never fully release the vehicle from the lifting platform with an unpressurised air suspension module.

- Connect the diagnostic system and switch on the ignition
- Fill the air suspension module via the diagnostic system
- Check the system for leakages
- Release the vehicle on the lifting device until it is at construction level. Activate the lifting mode and wait for the vehicle to lift up. Only then is a complete lowering of the vehicle permissible
- When rebuilding, fully tighten loosened screw connections according to the specifications of the vehicle manufacturer
- Where necessary, reconfigure the vehicle's height regulation

Note: BILSTEIN accepts no responsibility for damage to vehicles and their parts due to improper replacement. Any kind of change to the air suspension module will invalidate the warranty!