

INSTALLATION INSTRUCTIONS.



INSTALLATION INSTRUCTIONS.

General information:

- Do not store air springs below a temperature of -15°C or above $+50^{\circ}\text{C}$
- Removal and installation may only be performed by skilled personnel at a specialist workshop
- Special vehicle manufacturer's tools and equipment are required for replacement work
- The unfilled air spring must not be subjected to mechanical load
- Check air pipes and cables – replace if damaged
- Caution: The vehicle and the air spring module may be damaged if replacement work is not carried out according to the instructions or in a different order

Removing the rear air spring



The ignition must remain switched off while working on the air spring module.

- Measure ride height of vehicle **1**



- Remove the frontmost of the two large fuses (40 A) in the fuse box on the right (engine compartment) **2**

2



- Jack up vehicle



Use the vehicle jacking points specified by the vehicle manufacturer.

Danger of fatal injury due to vehicle slipping.

- Remove wheel
- Unscrew air line connection at the suspension strut **3**



Air pressure! Release connection slowly and allow air to escape.

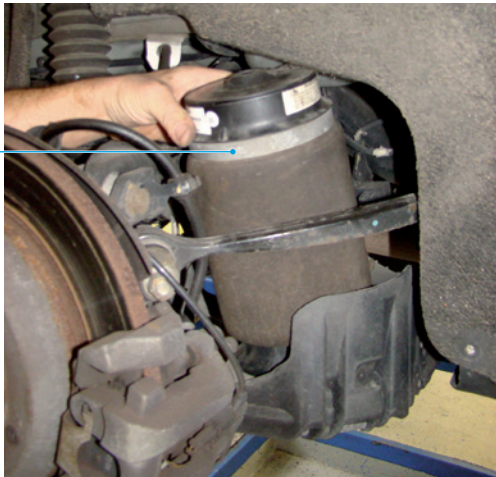
3



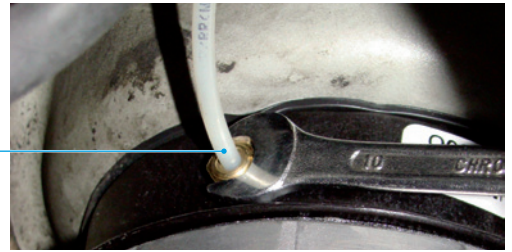
- Close off pressure line with plug during work
- Using a suitable tool, remove the air spring from the upper retaining clip

- Push the air spring together lengthways and push out of the centring mount of the control arm from below
- Remove air spring sideways 4

4



7



- Insert fuse



Never completely lower the vehicle from the hoist with the air suspension unpressurised.

- Start vehicle, activate the elevation function in the vehicle electronics, wait for at least 2 minutes (keep vehicle doors closed) 8

Installing the rear air spring

- Make sure the air spring is not twisted during installation
- Replace the upper retaining clip
- Undo screw connection of the new air spring. **Do not remove the plastic plug!** 5

5



8



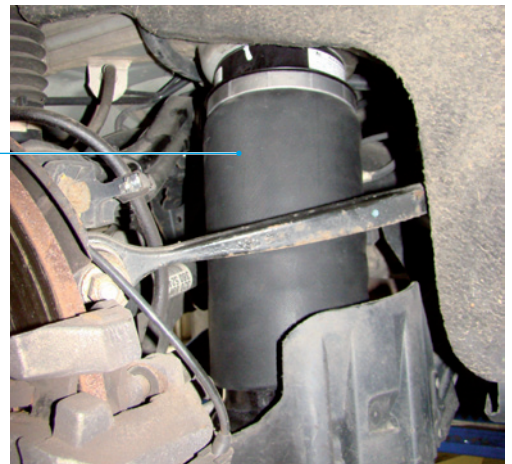
- **For newer model series** vehicles as of model year 2011: Connect diagnostic system and switch on ignition
- Fill air spring using diagnostic system
- As soon as the air spring is filled, check correct seating 9

- Replace old air line connection with new parts. Ensure the conical ring is fitted correctly (cone facing towards air line)
- Replace old retaining clip 6
Fully screw clip onto threaded pin on floor pan

6



9



- Fit air spring with protrusion in the centring mount of the lower control arm
- Snap air spring onto upper retaining clip
- Connect air line (2 Nm) 7

- Fit wheel
- Lower hoist to original vehicle level
- Completely lower the hoist when the vehicle rises independently
- Check system for leaks

Note: BILSTEIN shall accept no liability whatsoever for damage to the vehicle and parts resulting from incorrect replacement. Any changes to the air spring module will render the warranty null and void.