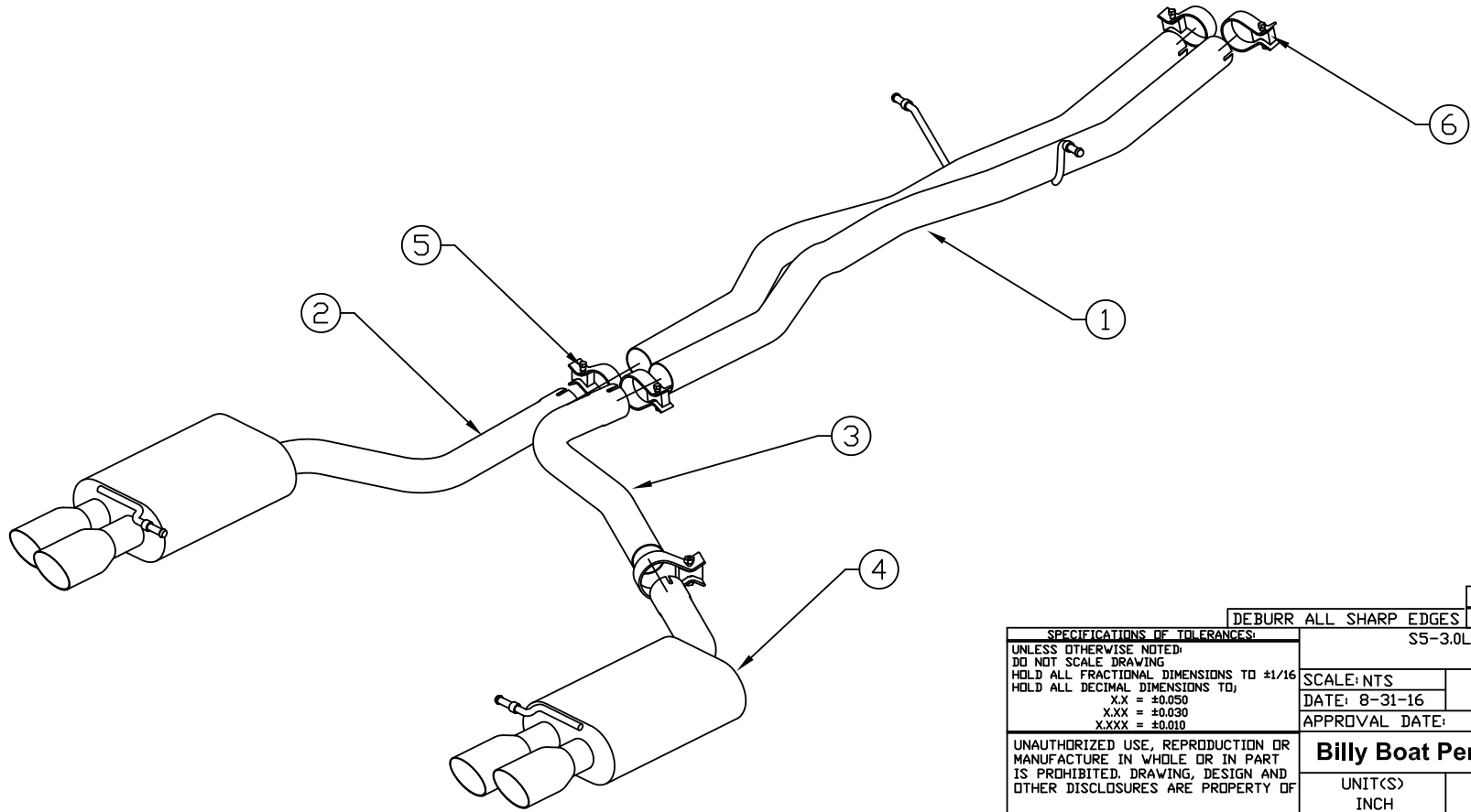


BILL OF MATERIALS						
ITEM	QTY.	U/M	PACKING	ISP	INT	DESCRIPTION
1	1	EA				CENTER X-PIPE SECTION
2	1	EA				DRIVER SIDE MUFFLER SECTION
3	1	EA				PASSENGER SIDE MUFFLER INLET PIPE
4	1	EA				PASSENGER SIDE MUFFLER SECTION
5	3	EA				CLAMP-2 1/2" BAND
6	2	EA				"CLAMP-SPECIAL"
7						
8						



UNLESS OTHERWISE NOTED:
 DO NOT SCALE DRAWING
 HOLD ALL FRACTIONAL DIMENSIONS TO $\pm 1/16$
 HOLD ALL DECIMAL DIMENSIONS TO:
 .XX = ± 0.050
 .XXX = ± 0.030
 .XXX = ± 0.010

UNAUTHORIZED USE, REPRODUCTION OR
 MANUFACTURE IN WHOLE OR IN PART
 IS PROHIBITED. DRAWING, DESIGN AND
 OTHER DISCLOSURES ARE PROPERTY OF

DEBURR ALL SHARP EDGES REV. DATE E.C.N. NO. BY

S5-3.0L V6 CATBACK SPORT

SCALE: NTS
 DATE: 8-31-16
 APPROVAL DATE: APPROVED BY:
 DWN: AWL
 SHT: 1 OF 1

Billy Boat Performance Exhaust

UNIT(S) JOB NUMBER: DRAWING NO.
 INCH FPIM0574