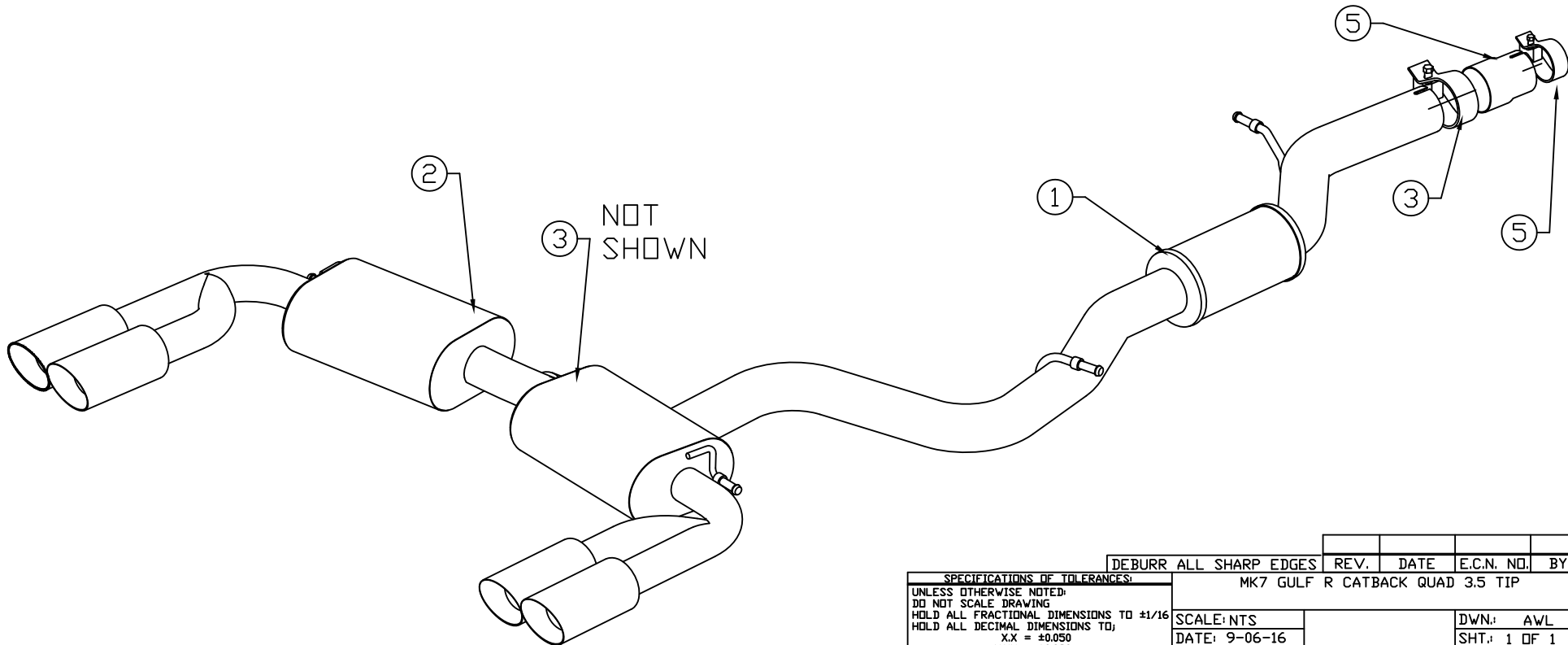


BILL OF MATERIALS				
ITEM	QTY.	U/M	PACKING	DESCRIPTION
1	1	EA		CENTER MUFFLER SECTION
2	1	EA		REAR MUFFLER SECTION
3	2	EA		CLAMP- 3.00" BAND
4	1	EA		CLAMP- SPECIAL
5	1	EA		ADAPTOR
6				
7				
8				



DEBURR ALL SHARP EDGES		REV.	DATE	E.C.N. NO.	BY
SPECIFICATIONS OF TOLERANCES:					
UNLESS OTHERWISE NOTED:					
DO NOT SCALE DRAWING					
HOLD ALL FRACTIONAL DIMENSIONS TO $\pm 1/16$					
HOLD ALL DECIMAL DIMENSIONS TO:					
X.X = ± 0.050					
X.XX = ± 0.030					
X.XXX = ± 0.010					
MK7 GULF R CATBACK QUAD 3.5 TIP					
SCALE: NTS		DATE: 9-06-16		DWN: AWL	
APPROVAL DATE:		APPROVED BY:			
Billy Boat Performance Exhaust					
UNIT(S) INCH		JOB NUMBER:		DRAWING NO. FPIM-0378	