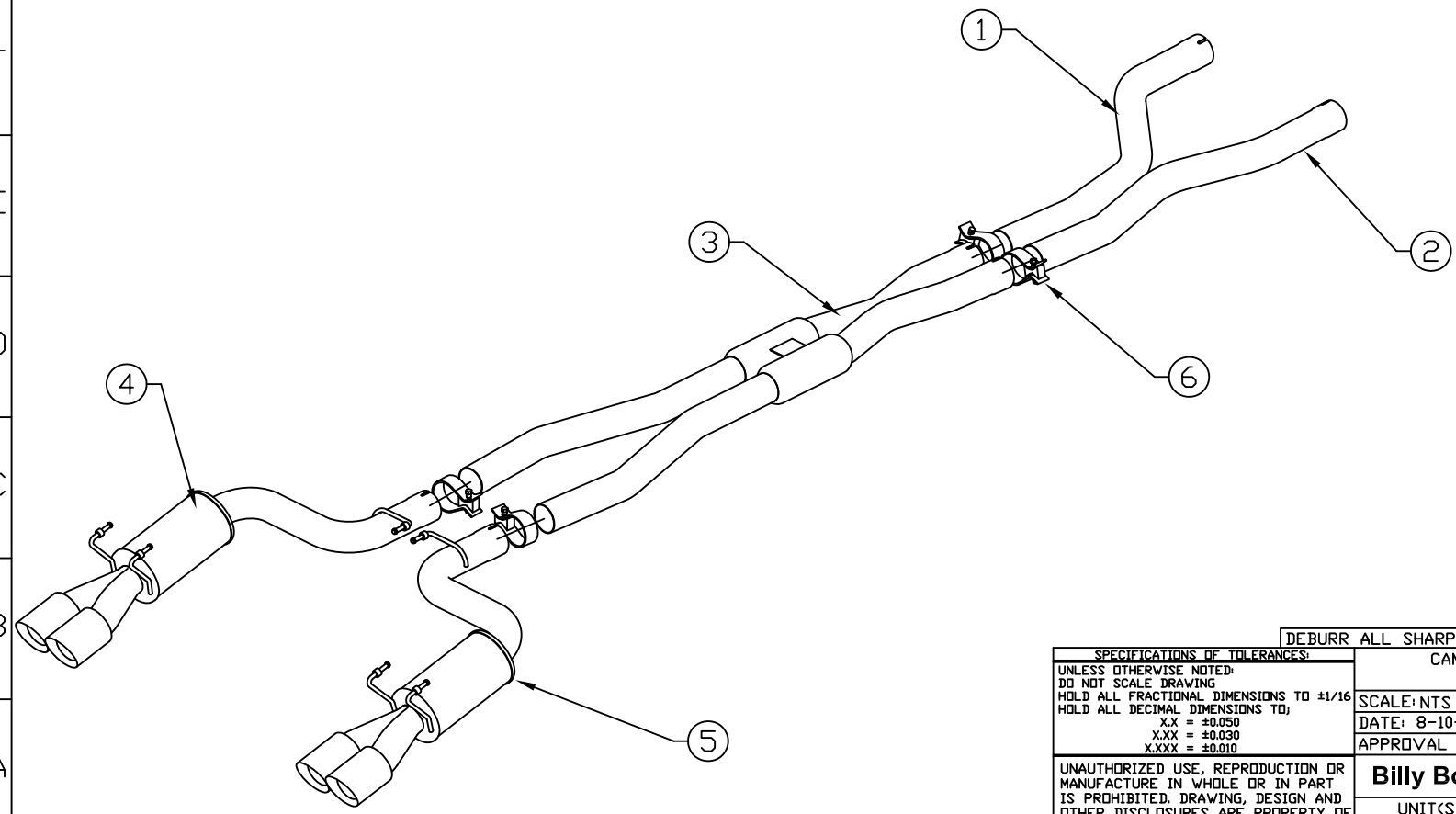


BILL OF MATERIALS

ITEM	QTY.	U/M	PACKING	ISP	INT	DESCRIPTION
1	1	EA				DRIVER SIDE FRONT PIPE
2	1	EA				PASSENGER SIDE FRONT PIPE
3	1	EA				X-PIPE
4	1	EA				DRIVER SIDE MUFFLER
5	1	EA				PASSENGER SIDE MUFFLER
6	4	EA				CLAMP- 3" BAND
7						
8						



UNLESS OTHERWISE NOTED: DO NOT SCALE DRAWING HOLD ALL FRACTIONAL DIMENSIONS TO $\pm 1/16$ HOLD ALL DECIMAL DIMENSIONS TO: X.X = ± 0.050 X.XX = ± 0.030 X.XXX = ± 0.010		CAMARD ZL-1 PRT CATBACK 4' QUAD	
SCALE: NTS	DATE: 8-10-16	DWN: AWL	SHT: 1 OF 1
APPROVAL DATE:		APPROVED BY:	
Billy Boat Performance Exhaust			
UNIT(S) INCH	JOB NUMBER:	DRAWING NO. FB00715	

Billy Boat Exhaust puts everything within reach.

Check out the collection of performance exhaust systems we offer.