



Installation Instructions Rear Floor Liner/Protector

Vehicle Application:
Jeep® Wrangler JL (2-Door)
2018- current
Part Number 51516

! WARNING READ AND FOLLOW ALL INSTRUCTIONS.

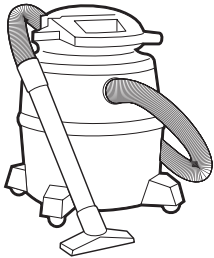
DO NOT STACK ANY OTHER LINERS OR MATS OVER OR UNDER your Bestop Floor Liners. Floor Liners MUST be anchored directly to carpet.


! WARNING This product is designed primarily to enhance the appearance of the vehicle. Do not rely in any way on the components of this product to protect against injury or death in the event of an accident. Never operate the vehicle in excess of manufacturer’s specifications.

Read and follow, precisely, all installation instructions provided when installing this product. Failure to do so may result in a poor fit and could place occupants of the vehicle in a potentially dangerous situation.



WEAR SEAT BELTS AT ALL TIMES

Tools
 <p>Vacuum Cleaner</p>

Installation Time
 <p>15 minutes</p>
Skill Level
<p>① ② ③ ④</p> <p>1 - Easy</p>



Installation Instructions Rear Floor Liner/Protector

Vehicle Application:
Jeep® Wrangler JL (2-Door)
2018- current
Part Number 51516

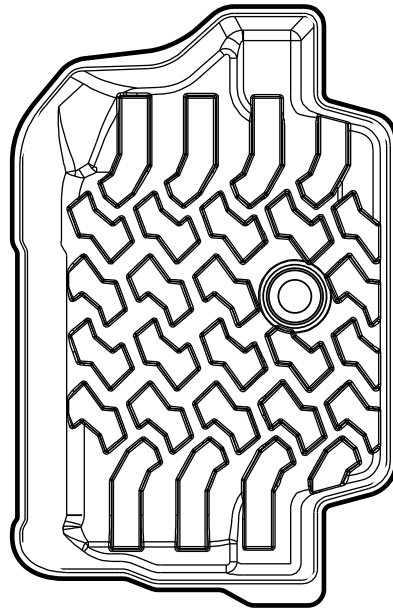
Parts List

- Required parts for installation - Page number in Installation Guide

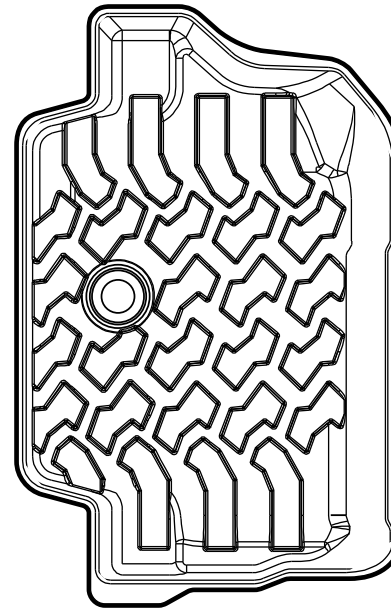
All Sections

Hardware

Page 3



Driver's Side



Passenger's Side

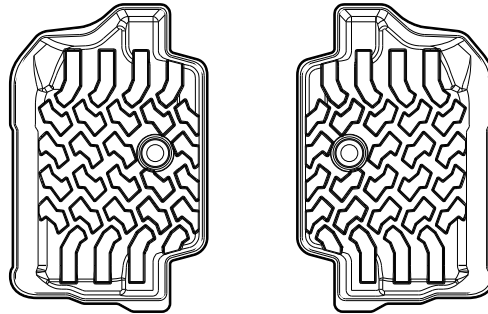
Rear Floor Liners
Qty. 1 for each side

Step 1

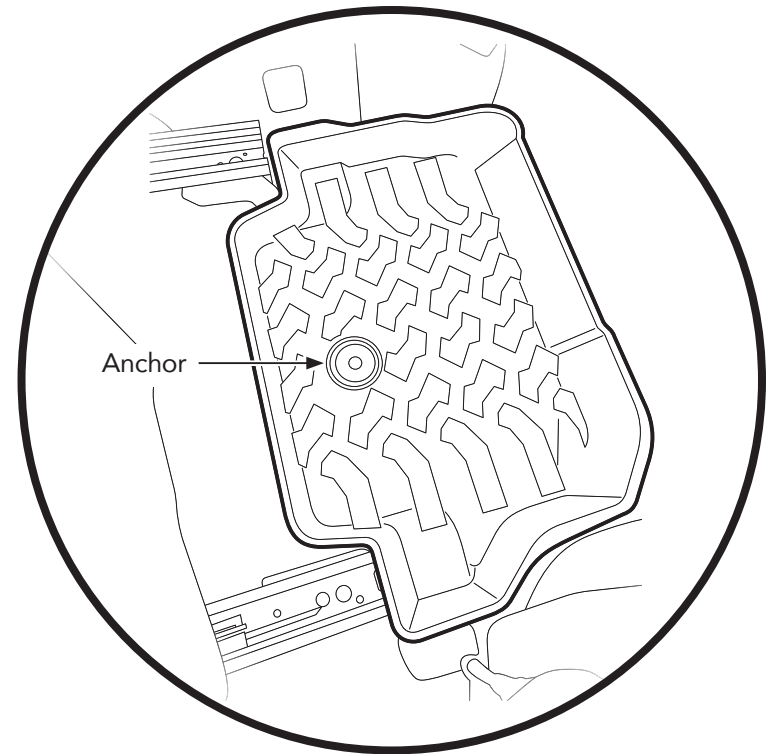
Remove all existing Floor Mats or Liners, according to manufacturer's instructions. Factory installed liners will pull up/off the factory carpet anchors.

Do not stack or combine your Floor Liners over other floor mats or liners.

Vacuum the vehicle carpet and make sure it is completely dry.

Hardware

Rear Floor Liners
Qty. 1 for each side

Step 2**Step 2**

Place the Rear Floor Liners into position in the rear seat foot wells.

Make sure that the original equipment carpet anchor buttons pass completely through the anchor holes in the Bestop Floor Liners.

Press down on the floor liner anchors to SNAP them into position around the anchor buttons.