



INSTALLATION INSTRUCTIONS

6651

Rear Shock Extension

00-UP CHEVY TAHOE, SUBURBAN, AVALANCHE

Congratulations! You were selective enough to choose a BELLTECH PRODUCT. We have spent many hours developing our line of products so that you will receive maximum performance with minimum difficulty during installation.

Note: Confirm that all of the hardware listed in the parts list is in the kit. **Do not** begin installation if any part is missing. Read the instructions thoroughly before beginning this installation.

Warning: **DO NOT** work under a vehicle supported by only a jack. Place support stands securely under the vehicle in the manufacturer's specified locations unless otherwise instructed.

Warning: **DO NOT** drive vehicle until all work has been completed and checked. Torque all hardware to values specified.

Reminder: Proper use of safety equipment and eye/face/hand protection is absolutely necessary when using these tools to perform procedures!

Note: It is very helpful to have an assistant available during installation.

RECOMMENDED TOOLS:

- Properly rated floor jack, support stands, and wheel chocks
- Combination wrench set
- Screwdriver set
- Torque wrench: *0-100 lb ft. range*
- Ratcheting socket wrench and sockets sets
- Safety Glasses

KIT INSTALLATION

1. JACKING, SUPPORTING, AND PREPARING THE VEHICLE

- a. Block the front wheels of the vehicle with appropriate wheel chocks. Make sure the vehicle's transmission is in "Park" (automatic) or 1st gear (manual). Activate the parking brake.
- b. Using a properly rated floor jack, lift the rear of the vehicle off the ground. Lift the vehicle so that the rear tires are approximately 6-8 inches off the ground surface.
- c. Support the vehicle using two (2) support stands, rated for the vehicle's weight. The stands should be positioned, one on each of the frame rails. Prior to lowering the vehicle onto stands, make sure the supports will securely contact the straight, flat portions of the frame rails.
- d. It is very important that the vehicle is properly supported during this installation to prevent frame damage and personal injury! Make sure that the support stands are properly placed prior to performing the following procedures.

- e. Slowly lower the vehicle onto the stands and, before placing the vehicle's weight on them, again check that they properly and securely contact the frame rails as described above. Check for possible interference with any lines, wires, or cables.

! SAFETY REMINDER: Check for safe vehicle stability before proceeding under the vehicle to begin the following procedures. Never work under a vehicle supported by only a jack. Always use properly rated support stands to support the vehicle.

2. **SHOCK EXTENSION INSTALLATION LEFT-HAND**

- a. Working from the driver side of the rear axle, remove the rear shock absorber from the vehicle. Keep the factory hardware for use during reassembly.
- b. Place shock extension over driver shock mount (Figure 1) facing towards rear of vehicle as shown.
- c. Insert spacer tube into factory shock mount. Align bore of spacer tube with holes in the shock mount and shock extension.
- d. Insert one (1) 9/16-12 x 3-1/2 H.H.C.S. with washer, from outside, through hole in shock extension, factory shock mount, spacer tube, and out the other side. Secure with washer a locknut (Figure 1). Tighten and torque to 70 ft-lbs.
- e. Insert one (1) 1/2-13 x 1-1/4 H.H.C.S. with washer, from under, through hole in shock extension, factory shock mount, and out the other side. Secure with washer a locknut (Figure 1). Tighten and torque to 60 ft-lbs.

3. **SHOCK EXTENSION INSTALLATION RIGHT-HAND**

- a. Repeat Steps 2a through 2e for RH side of axle.

4. **SHOCK ABSORBER INSTALLATION**

- a. Install the appropriate *Belltech* Nitro-Drop® or Nitro-Active® rear shock absorbers using the original hardware. See the current *Belltech Application Guide* or contact you nearest *Belltech Dealer* for the appropriate part numbers for your application. Tighten and torque hardware to 70 lb ft.

5. **FINALIZING THE INSTALLATION**

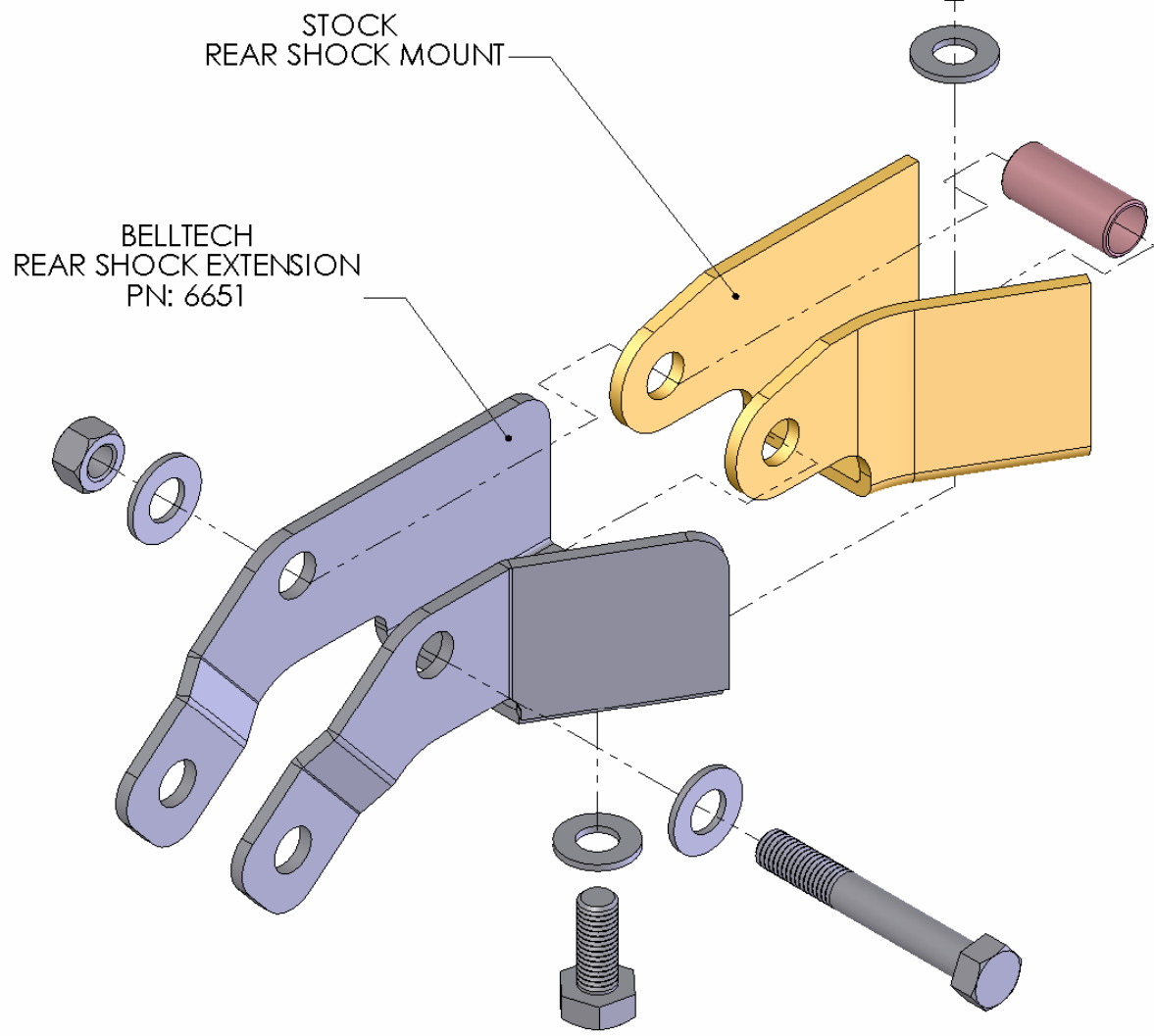
- Check that all components and fasteners have been properly installed, tightened and torqued.
- Lift vehicle and remove support stands. Carefully lower vehicle to ground.
- Check brake hoses, cables and other components for any possible interference.
- Check for wheel/tire to chassis/body interference.
- Immediately test-drive the vehicle in a remote location so that you can become accustomed to the revised driving characteristics and handling. Be aware that the vehicle will handle substantially different now that it has been lowered.
- Installation is complete. Check all of the hardware and re-torque at intervals for the first 10, 100, 1000 miles.

PART LIST FOR 6651

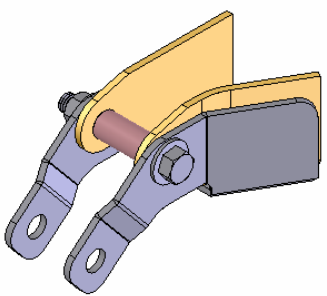
REAR SHOCK EXTENSIONS KIT

PART No.	DESCRIPTION	QTY.
6651-100	Driver Side Shock Extension	1
6651-200	Passenger Side Shock Extension	1
110456	Bolt 9/16"-12 x 3 1/2"	2
110670	Washer 9/16"	4
110454	Lock Nut 9/16"-12	2
7000-880	Spacer Tube .750" x .085" x 1.625"	2
112202	Bolt 1/2"-13 x 1 1/4"	2
110660	Washer 1/2"	4
112322	Lock Nut 1/2"-13	2

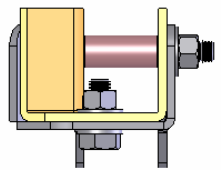
FIGURE 1



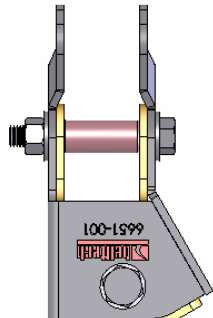
EXPLODED VIEW



ISOMETRIC VIEW



BACK VIEW



BOTTOM VIEW