

## Installation Instruction:

**Product: NDS6223EP**

**Car Model: 2013~2015 Lexus ES350**

### Disclaimer:

We are not responsible to damage, loss or injury caused from attempting or performing the DIY. Further, the navigation and DVD lock while in motion was originally installed for safety reasons. By unlocking the navigation and DVD lock, we are assuming that the navigation and DVD will be controlled and enjoyed by the passenger and not by the driver. As such, are not responsible to damage, loss or injury from using the bypass modules. Please be responsible drivers!

### About the Beat-Sonic [NAV/DVD Bypass Module](#):

**System:** 100% Plug and play kit from Beat-Sonic for allowing use of factory features that would be locked out during vehicle movement.

These plug and play module kits allow override of the lock out system equipped in your factory Navigation/DVD system when the vehicle is in motion. Due to the fact that no modification is needed on the factory harness and this is 100% plug and play, it is easily reversible to the original factory specs without showing any signs that this modification was ever made.

**The NDS kit** provides automatic video in motion for the DVD player at all times. Navigation in motion is activated by the steering wheel volume control buttons by pressing volume up (+), down (-), up (+), down (-) in sequence and at normal cadence. While navigation in motion is activated, the navigation system will temporarily lose its GPS location and the position indicator on the navigation screen will stop moving. By default, a programmable timer will reset the navigation in motion to switch off after 3 minutes.

Navigation in motion can be switched off before the timeout period has expired by repeating the volume control button sequence up (+), down (-), up (+), down (-).

This device is suitable for Lexus generation 7 and 8 navigation systems. The full time video in motion feature is compatible with all navigation system features including Lexus App Suite, Enform App Suite and energy consumption display found on hybrid models.

## **The DIY Installation Starts Here:**

### **1. PRECAUTION**

#### **NOTICE:**

After turning the engine switch off, waiting time may be required before disconnecting the cable from the negative (-) battery terminal. Therefore, make sure to read the disconnecting the cable from the negative (-) battery terminal notices before proceeding with work

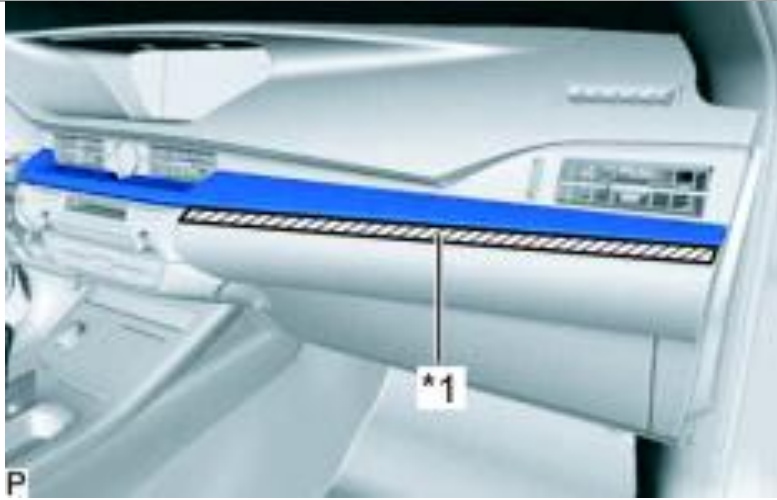
## 2. REMOVE CENTER INSTRUMENT CLUSTER FINISH PANEL GARNISH.

(a) Apply protective tape to the area shown in the illustration.

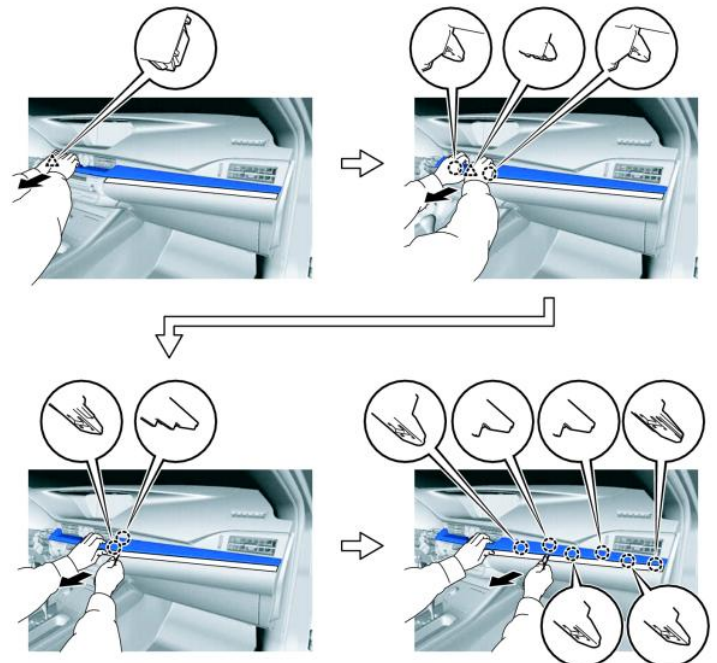
### Text in Illustration

\*1

Protective Tape



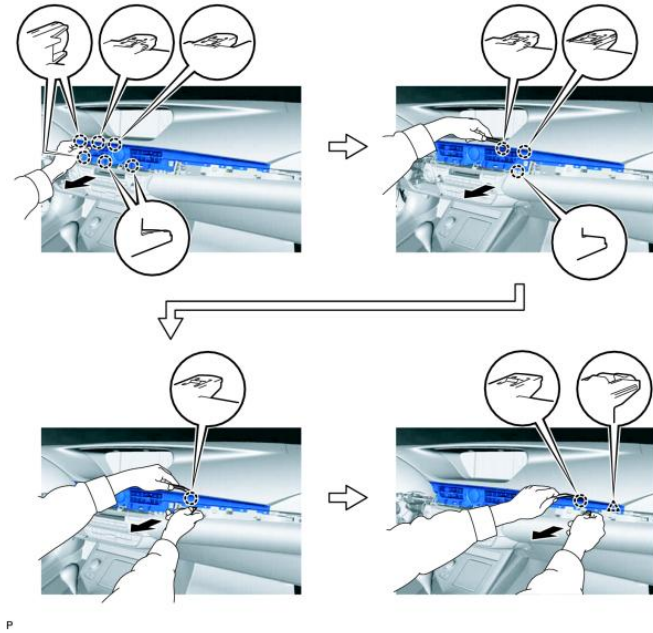
(b) Using a molding remover, disengage the 10 claws and 2 clips as shown in the illustration.



P

### 3. REMOVE NO. 2 INSTRUMENT PANEL REGISTER ASSEMBLY

- (a) Using a molding remover, disengage the 11 claws and clip as shown in the illustration.
- (b) Disconnect the connector to remove the No. 2 instrument panel register assembly.

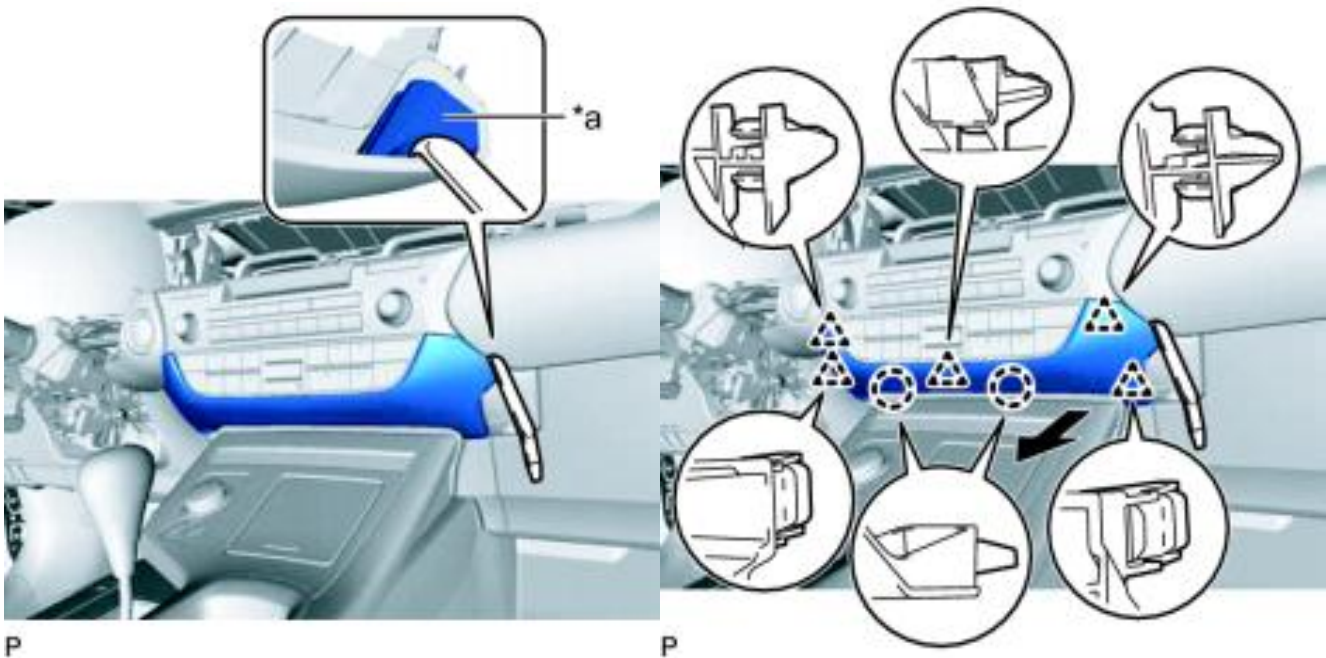


### 4. REMOVE LOWER CENTER INSTRUMENT PANEL FINISH PANEL.

- (a) Insert a molding remover as shown in the illustration.

#### Text in Illustration

*a	Lower Center Instrument Panel Finish Panel Hole
----	---



- (b) Disengage the 2 claws and 5 clips and remove the lower center instrument panel finish panel as shown in the illustration.

## 5. REMOVE RADIO RECEIVER ASSEMBLY WITH BRACKET (for Radio Receiver Type).

(a) Remove the 4 bolts using 10mm socket with extension.



(b) Pull the radio receiver assembly with bracket toward the rear of the vehicle and disengage the 2 clips and 2 claws. Grab a towel and rest the radio between the towel and center console to avoid scratching interior pieces.



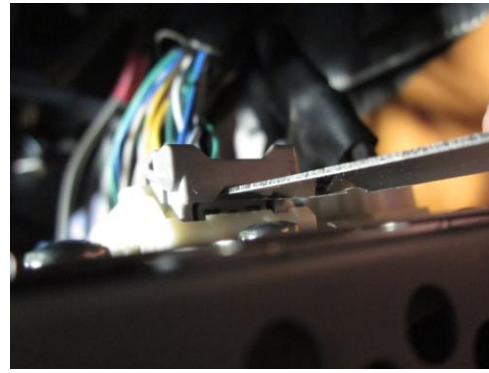
## 6. Removing the connector.

(a) The connector circled in red is what you will be working on.

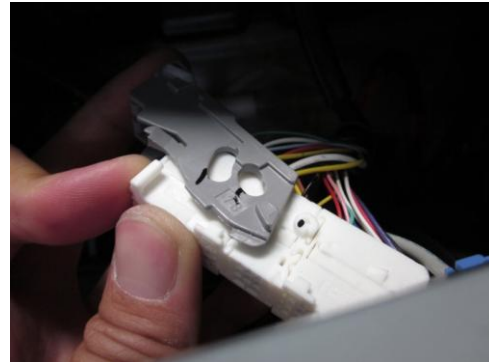




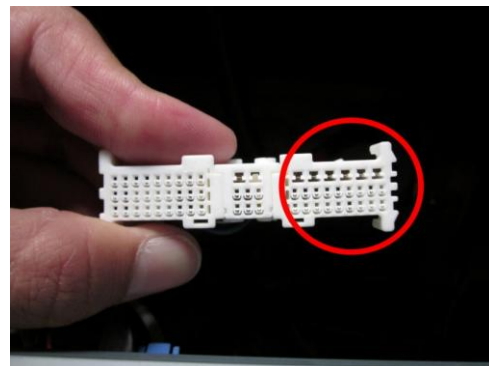
(b) Take a flat head screw driver to release the clip on the right side of the connector. Then pull the connector out.



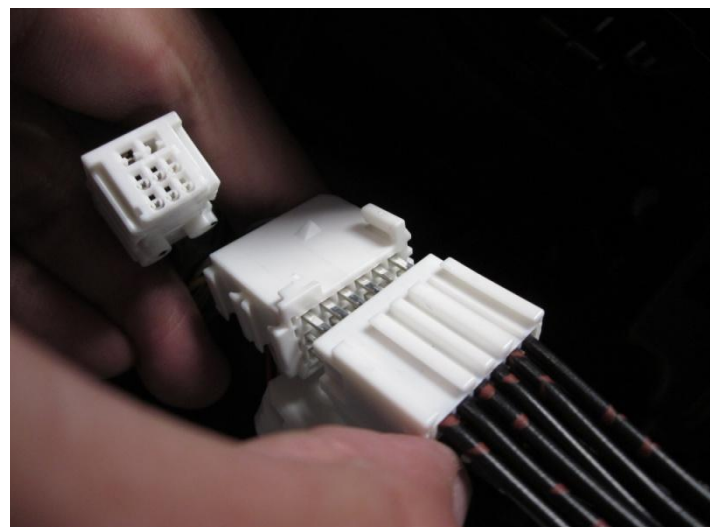
(c) Carefully remove the gray bracket, which is being used to keep the three connectors together.



(d) After the gray bracket is removed, the connector should look like this. The right side of the connector is what you need to disconnect from the main connector.



(e) Connect the male side of the NDS6223EP connector to the female connector which was disconnected from the previous step. Make sure the connection is secure and that none of the pins are exposed on the side.



(f) Using the supplied urethane insulation tape, tear off a size to cover the 2, 24 pin connectors that are mated to each other as shown below.



(g) Take the female side of the NDS6223EP connector and link it back to the main connector, then mount the gray bracket back to the main connector.



(h) Once the main connector is in one piece with the gray bracket, insert it back to behind the oem head unit.

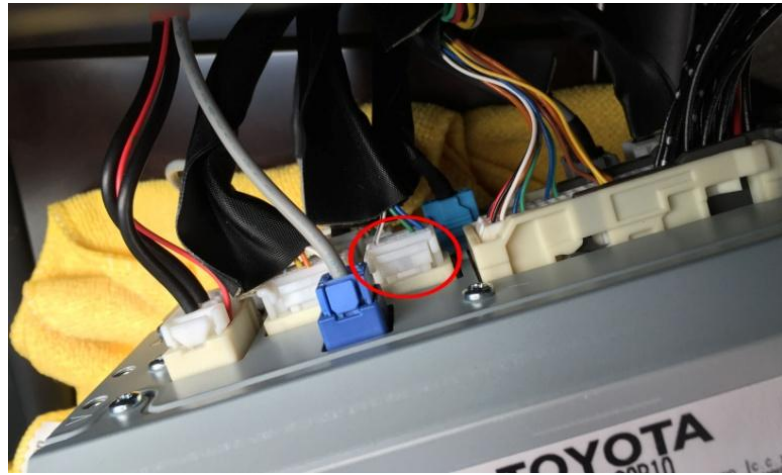


## 6. The GPS Connector.

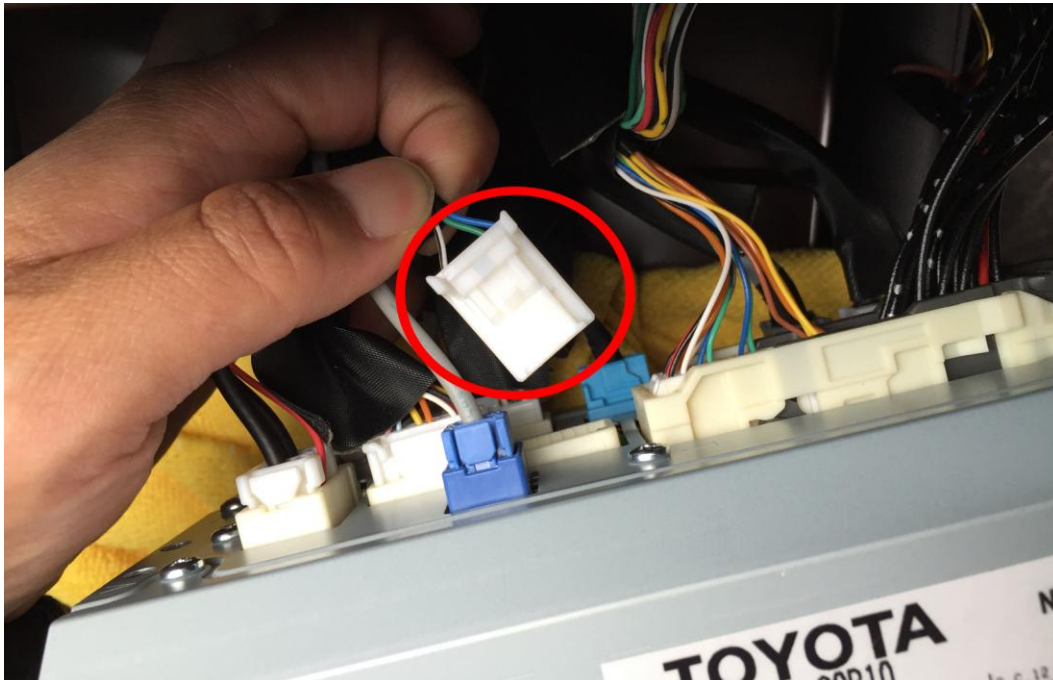
- 2013-2014 Lexus ES owners: Please do not use the 1-pin connectors on the NDS6223EP. GPS on the 2013-2014 ES models does not engage the safety lockout feature. Wrap the 1-pin connectors on the NDS6223EP individually by using the electric tape and isolate them to avoid any unwanted contacts with other wires or connectors.
- 2015 Lexus owners: Please daisy chain the 1-pin GPS connector on the NDS6223EP to the factory 1-pin GPS connector located behind the radio.

## 7. The steering wheel connector.

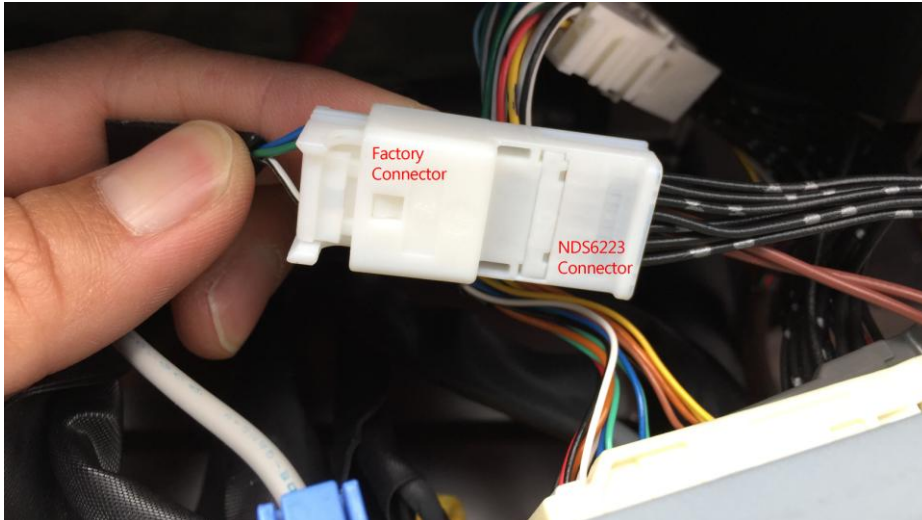
- Locate the matching connector behind the OEM head unit as shown on the photo.



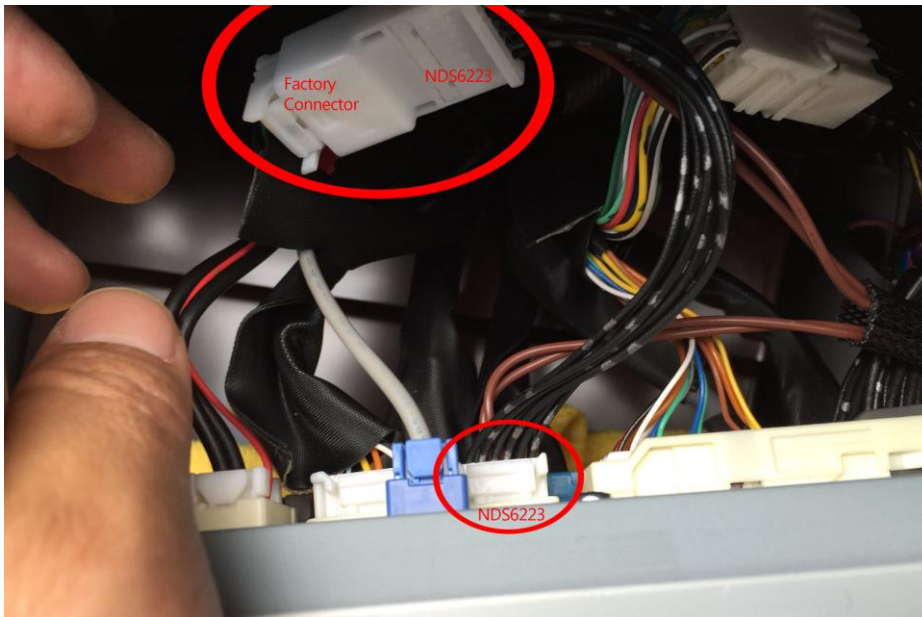
- Disconnect the steering wheel control connector.



- Connect the matching connector on the NDS6223EP to the factory steering wheel control connector what you just disconnected from the head unit.



- Connect the other side of the NDS6223EP connector to the factory head unit.



### **Programming the switch**

The default setting of the NDS6223EP is programmed to turn off automatically after 3 min. Please read the enclosed programming instruction (found inside the retail box) and program the switch to your desired setting.

**TEST THE UNIT AND REVERSE PROCESS:** Test the unit to make sure it is working well. Then, perform the above steps in reverse to put everything back to normal and you are done!