

Thank you for your purchase of RX-82. Please read carefully and follow these instructions before installing this product.

CAR MODEL	YEAR	CHASSIS CODE
Harrier/Hybrid-30 series	2006 ~	MCU30W/31W/35W/36W, ACU30W/35W
Lexus RX	2003 ~	

Note
 This product is applicable to JBL/Mark Levinson/Lexus Standard Audio System with 11 speakers, with Navi system to allow installation of an After market 2DIN Audio system. And integrate the factory/Aftermarket Navi and activated the Steering Wheel Remote control switches.

- Precautions**
1. Allow to factory steering wheel switch mounted controlled vehicle.
 2. Only 2CH speaker level out put of Aftermarket Radio is used. Feder/DSP function will be disable.
 3. Some noises(popping) maybe heard when ignition is powered on and off in some Aftermarket Units.
 4. To provide the Video(DVD) signal from Aftermarket Unit to OEM Head Unit extra RCA output cable is to be needed.

Dimension
 40 x 25 x 122 mm (Length x Height x Width) Weight : 280 gm (without system component).

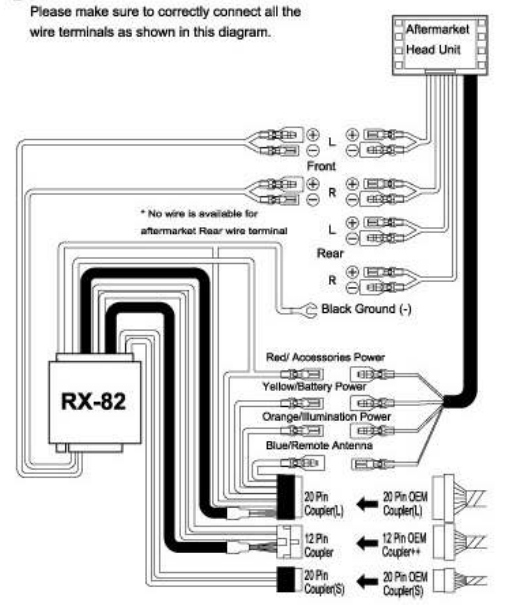
Package contents
 Electronic Adapter unit, Face Panel x 1, Side Panel x 2 (L/R), Screw 4 x 2 and Instruction Manual.

Cautions and Disclaimers

Mount all components in locations that will not inhibit safe driving or obstruct the motions of various components of the vehicle functionally. Be cautious to not damage wires, piping and tanks installed in the automobile. Avoid wet, dusty or extreme temperature areas for installation.

Any damages resulting to the Aftermarket systems or damages to the vehicle resulting from improper installation or careless installation procedure are neither covered by warranty nor we are responsible for injuries or damages resulting from installation process. Please observe cautions when performing the installation.

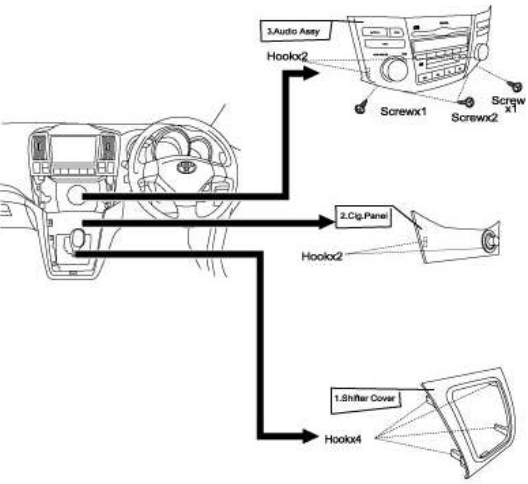
2 Adapter Wiring Diagram



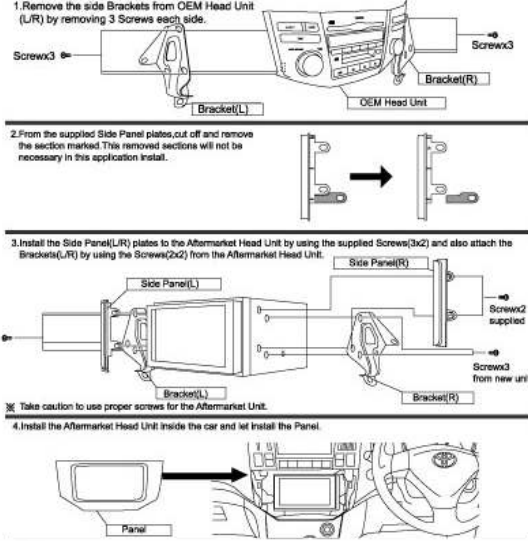
- Precautions Before Installation**
- Remove the negative battery terminal of the battery.
 - In order to protect the interior of the vehicle, cover the interior parts around the work areas with protective tape.
 - After installation let confirm the Brake lamps, Headlights, Turn signals and the Wiper blades are operating properly.

Before starting installation, verify that the original audio system in the vehicle is fully functional. This kit will not remedy any issues that existed before the install or faults in the original system in the vehicle.

- 1 Removal of the Factory Audio Head Unit**
1. Remove Shifter Cover (Hook x 4)
 2. Remove Cigarette Lighter Panel (Hook x 2)
 3. Remove Audio Head Unit Assembly (Hook x 2, Screw x 4)



3 Installation of After market Head Unit



- 4 Verification of Operation**
- After installation, verify all the functions of the Aftermarket Radio and the functions of the Vehicle. Use extreme caution to verify the operation of safety, operational features and equipment of the Vehicle.

5 Steering Wheel Switches

