



Part#: 55324

Product: Dual Steering Stabilizer

Application: Ford Ranger 4WD

READ AND UNDERSTAND ALL INSTRUCTIONS AND WARNINGS PRIOR TO INSTALLATION OF SYSTEM AND OPERATION OF VEHICLE.

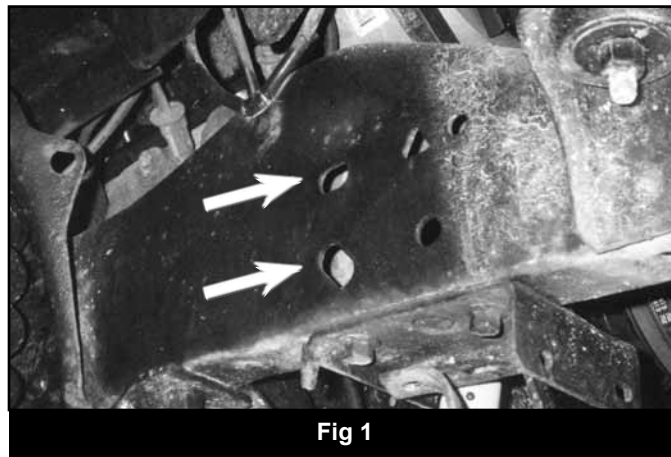
SAFETY WARNING BDS Suspension Co. recommends this system be installed by a professional technician. In addition to these instructions, professional knowledge of disassembly/ reassembly procedures and post installation checks must be known.

INSTALLATION INSTRUCTIONS

1. Park the vehicle on a flat, clean surface and block the rear wheels for safety.
2. Ensure that the front wheels are pointing straight forward.
3. Locate the slotted holes on the outside of the passenger's side frame (Fig 1).

PARTS LIST

Part #	Qty	Description
	1	Frame Bracket
	1	Frame Backing Plate
	1	L Bracket
	2	5/16"x1-1/4"x2" U-bolt
	4	5/16"-18 Torque Prevailing Nuts
	4	1/4" USS Washers
	3	7/16"-14 x 1-1/4" Bolt Grade 5
	3	7/16"-14 Torque Prevailing Nuts
	6	7/16" SAE Washers



4. Place the stabilizer frame bracket up to the holes in the frame with the bend in the bracket facing the front of the vehicle. There are three holes in the top half of the frame bracket. Align the middle hole with the upper slot in the frame. Install a 7/16" x 1-1/4" bolt and washer through the middle hole and into the frame.
5. Mount the backing plate on the inside of the frame with the holes lining up to the corresponding holes in the frame bracket. Fasten the backing plate with a 7/16" nut and washer. Do not tighten. **Note:** It may be necessary to loosen or remove the sway bar frame bracket to access the bolts on the inside of the frame.
6. Install a second 7/16" x 1-1/4" bolt, nut and washers in the lower hole. Adjust the frame bracket to the desired location, providing adequate clearance between the sway bar, etc. Snug the mounting hardware.
7. Mark the frame with a center punch through the top mounting hole in the frame bracket. Drill a 1/2" hole in the frame at the mark. Install a 7/16" x 1-1/4" bolt, nut, and washers (Fig 2). Tighten all mounting hardware securely.

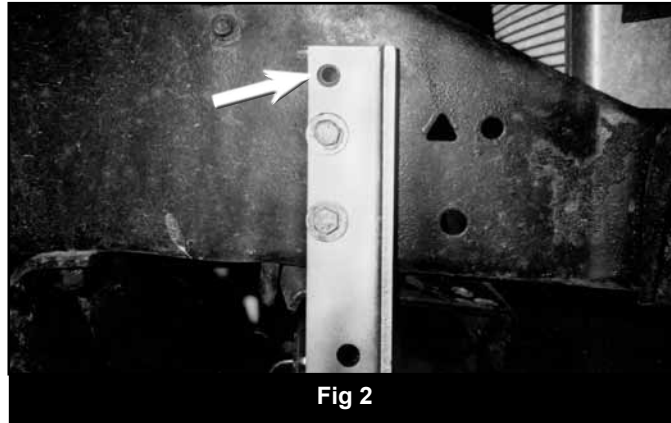


Fig 2

8. Attach the tie rod bracket to the tie rod with the two 5/16" x 1-1/4" x 2" U-bolts, nuts and washers (Fig 3). Leave the bracket loose for adjustment.

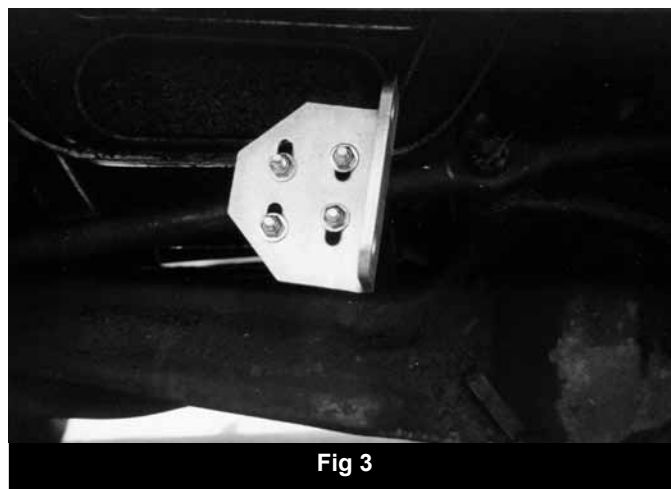


Fig 3

9. Extend the stabilizer cylinders out half way (approx. 4"). Install the bushings and washers on the stabilizers per the supplied instruction sheet. If installing boots, do so now. Install the bodies of the cylinders in the tie rod bracket and the rod ends into the frame bracket.
10. Adjust the tie rod bracket so that the cylinders are tight against both brackets and setting at mid travel (4" open). Install the outer stabilizer bushings, washers, and nuts and tighten securely (Fig 4).

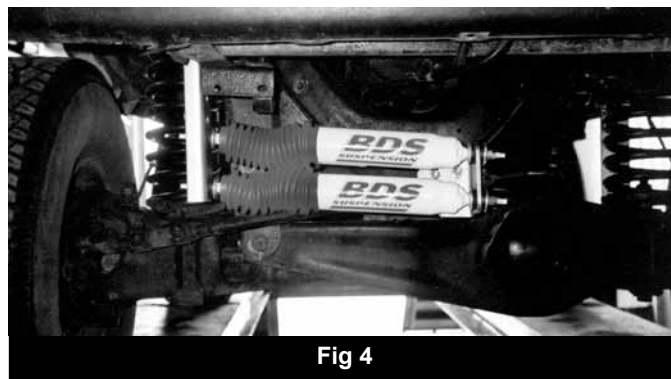


Fig 4

11. Tighten the tie rod bracket U-bolts to 15 ft-lbs.
12. Do a steering sweep to check any binding or interference.
13. Torque 7/16" bolts to 45 ft-lbs.
14. Retorque hardware after 100 miles and check after any off-road use.