



High Flow Sump Installation Manual

Installation Instructions

P/N # 1050330

PLEASE READ ALL INSTRUCTIONS BEFORE INSTALLATION

KIT CONTENTS :

Please check to make sure that you have all the parts listed in this kit **before** you start the disassembly of your truck.

1500397	1500400	1500399	1500404			
						
FlowMax Sump Body	Sump Mesh Screen	Sump Plate Clamp	3" Hole Saw			
Qty: 1	Qty: 1	Qty: 1	Qty: 1			
1401586	1500403	1500387	1500401	1500313	1400105	
						
Viton O-Ring	11/16" Spring Clamp	13/16" Spring Clamp	Stainless Cap Screw	-8 ORB x 1/2" Barb	3/8 NPT to 1/2" Barb	
Qty: 1	Qty: 1	Qty: 1	Qty: 1	Qty: 1	Qty: 1	
1462122	1462123	1452821	1604053	1604054	1604054	1500402
						
3/8" Hose Plug	1/2" Hose Plug	1" Gear Clamp	3/8" Fuel Hose	1/2" Fuel Hose	1/2" Fuel Hose	Seal Washer
Qty: 1	Qty: 1	Qty: 2	Qty: 2"	Qty: 72"	Qty: 2"	Qty: 1

Optional Accessories:

- 1050331 – Flowmax 1/2" Monster line kit.

Required Tools

- Flat Nose Pliers
- Side Cutter
- 8mm Allen Key or Allen Socket
- 3" Hole Saw
- Adjustable Crescent Wrench
- Small Torque Wrench
- Razor Blade
- Thread Sealant/Teflon Tape

Installation:



It is recommended to have less than 1/8 tank before beginning this procedure

1. Begin by marking the location for the center point of the sump. Drill a hole using the pilot bit from the hole saw at this location. This will allow any remaining fuel to drain into a drain pan.

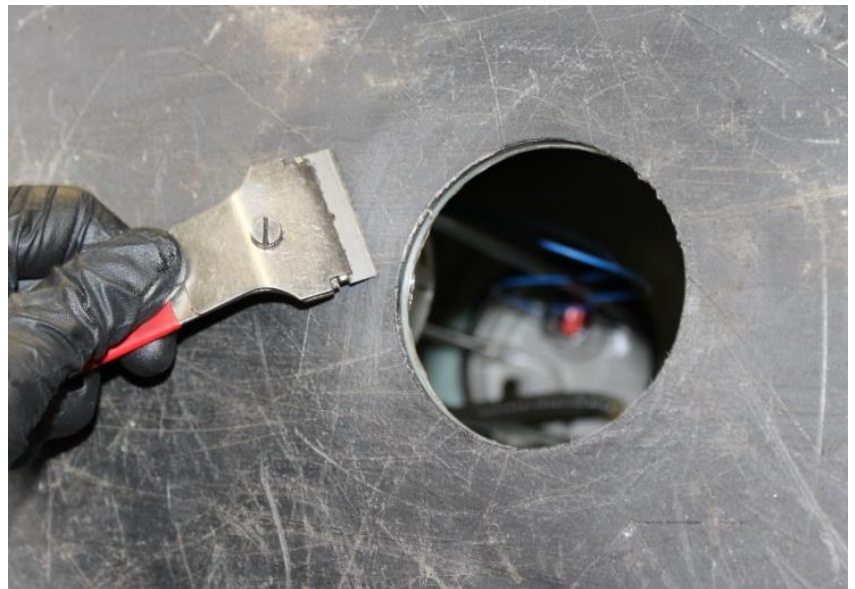


2. Now, create a 3" hole by drilling through the tank using the hole saw. If fuel remains in the tank, place a drain bucket below with a large enough capacity.



3. Thoroughly de-burr the edges of the hole and remove any high spots on the outside of the tank using a razor blade.

NOTE: EVEN A SMALL BURR OF PLASTIC WILL CAUSE THE O-RING NOT TO SEAL. ENSURE THE MATING SURFACE IS CLEAN AND SMOOTH.

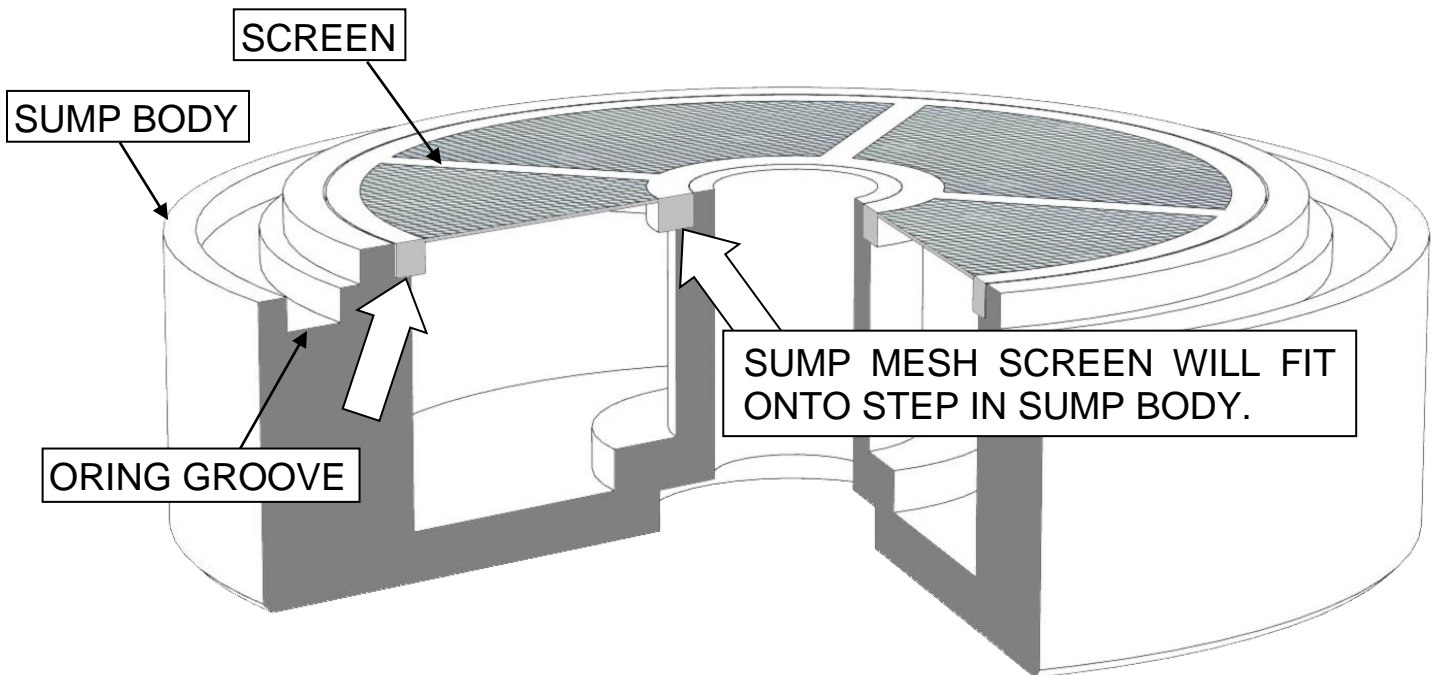


4. Apply thread sealing tape or compound to the NPT barb fitting. Then thread into sump finger tight, turn an additional 2 full revolutions to torque.

5. Install O-ring into the groove as shown.



6. Insert the mesh screen into the groove.



7. Insert the clamp plate into the hole drilled into the tank.

The clamp plate can go either way up.



8. Push the seal washer over the threads of the M12 bolt.
9. Now take the sump assembly with the bolt and thread into the clamp plate as shown.

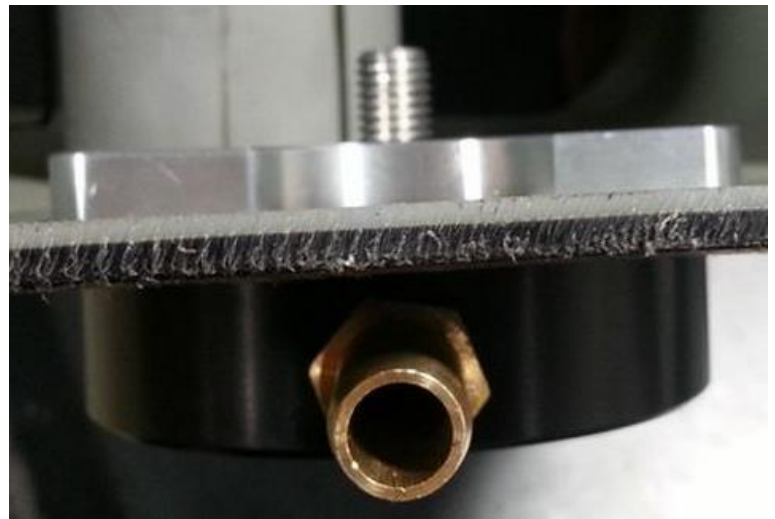


10. Turn the bolt by hand until the sump bottoms out on the tank base.

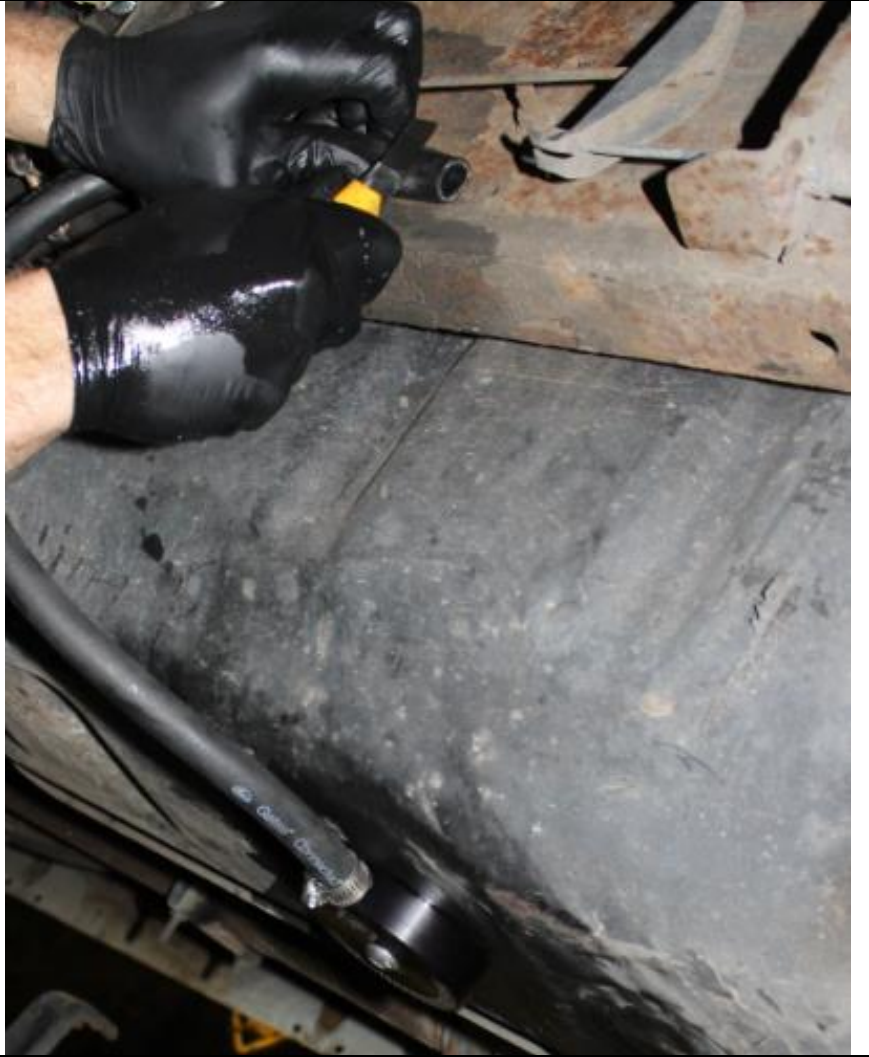
Torque the bolt using an 8mm hex socket to 20 ft-lb.



11. The sump should be tight as shown in this cross section.

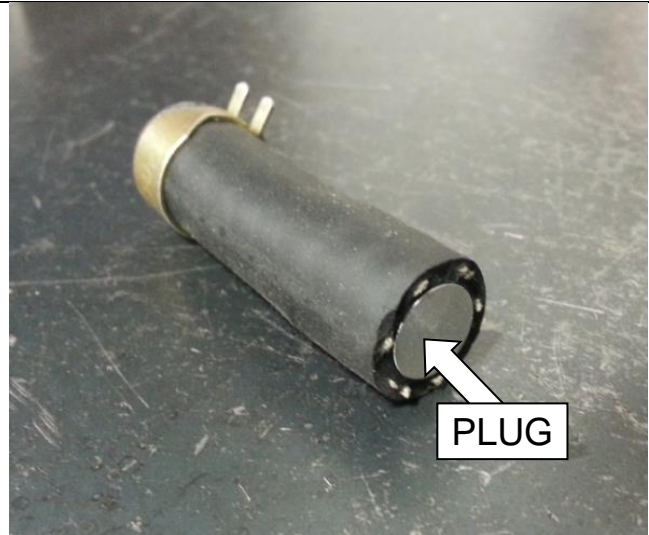


12. Now run your fuel line to the lift pump and cut to length. Secure the hose at both ends with the supplied gear hose clamps.



13. If desired, remove the old fuel supply line from the pickup and cap using the hose plug/clamp/fuel hose as shown. The larger of the two lines will be the supply, either 3/8" or 1/2"

NOTE: You may need to remove the fuel tank from the vehicle to have access to the supply line.



Note: If the sump leaks from the O-Ring, remove the sump and check the cut flange for burrs or cuts in the tank surface.