



# BD Diesel Ford Exhaust Manifold Kit

6.7L Power Stroke F250-550

<b>1043006</b>	<b>Drivers Side Manifold Only</b> 2011-2016 Pickup / Cab & Chassis
<b>1043007</b>	<b>Exhaust Manifolds Pair</b> 2011-2014 Pickup 2011-2016** Cab & Chassis
<b>1043008</b>	<b>Exhaust Manifolds Pair</b> 2015-2019 Pickup 2017-2019** Cab & Chassis

**\*\*2015-2016 Owners must verify fitment/ manifold style prior to ordering**

1043007 fits on **early** model trucks that came with the smaller GT32 turbo

1043008 fits on **late** model trucks that came with the larger GT37 turbo

1045824 & 1045825 Turbo Retrofit kits use 1043007. 1045827/ 1045828 Screammers use 1043008






## Kit Contents

### 1043006 (2011-2016) Drivers Side Manifold Only

1403006		1403009		FT-11141221	
					
Manifold; Drivers Side 11-16		Spacer; Ford 6.7 Manifold		Nut; M8x1.25 Lock Flange	
<b>Qty: 1</b>		<b>Qty: 16</b>		<b>Qty: 19</b>	
FT-11559036	1462432	1405901	BC3Z-6N640-A	1462434	
					
Stud; M8x1.25x35	Stud; M8x1.25x50	Gasket; Exhaust Manifold	Gasket; Cross Over Pipe	Stud Install Tool; M8x1.25	
<b>Qty: 3</b>	<b>Qty: 16</b>	<b>Qty: 1</b>	<b>Qty: 1</b>	<b>Qty: 1</b>	

### 1043007 (2011-2014 Pickup) (2015-2016 Cab & Chassis)

1403006		1403007	
			
Manifold; Drivers Side 11-18		Manifold; Passenger Side 11-14	
<b>Qty: 1</b>		<b>Qty: 1</b>	
HC3Z-9E464-A	1403009	FT-11141221	
			
Gasket; Manifold to EGR	Spacer; Ford 6.7 Manifold	Nut; M8x1.25 Lock Flange	
<b>Qty: 1</b>	<b>Qty: 16</b>	<b>Qty: 22</b>	

FT-11559036	1462432	1405901	BC3Z-6N640-A	1462434
				
Stud; M8x1.25x35	Stud; M8x1.25x50	Gasket; Exhaust Manifold	Gasket; Cross Over Pipe	Stud Install Tool; M8x1.25
<b>Qty: 6</b>	<b>Qty: 16</b>	<b>Qty: 2</b>	<b>Qty: 2</b>	<b>Qty: 1</b>

## 1043008 (2015-2019 Pickup) (2017-2019 Cab & Chassis)

1403006		1403008		
				
Manifold; Drivers Side 11-18		Manifold; Passenger Side 11-14		
<b>Qty: 1</b>		<b>Qty: 1</b>		
HC3Z-9E464-A	1403009	FT-11141221		
				
Gasket; Manifold to EGR	Spacer; Ford 6.7 Manifold	Nut; M8x1.25 Lock Flange		
<b>Qty: 1</b>		<b>Qty: 16</b>		<b>Qty: 22</b>
FT-11559036	1462432	1405901	BC3Z-6N640-A	1462434
				
Stud; M8x1.25x35	Stud; M8x1.25x50	Gasket; Exhaust Manifold	Gasket; Cross Over Pipe	Stud Install Tool; M8x1.25
<b>Qty: 6</b>	<b>Qty: 16</b>	<b>Qty: 2</b>	<b>Qty: 2</b>	<b>Qty: 1</b>

## Introduction

The BD performance exhaust manifold has 75% thicker than OEM walls and is machined with a thicker bolting flange to improve service life at high temperatures.

The thicker bolting flange can be used with OEM studs and spacers, but it is recommended to use the included longer studs and spacers.

## Installation/ Torque Specifications

Remove all OEM studs from the head and clean all surfaces prior to installation.

Be sure to keep debris from falling into the exhaust runners and potentially causing engine damage.

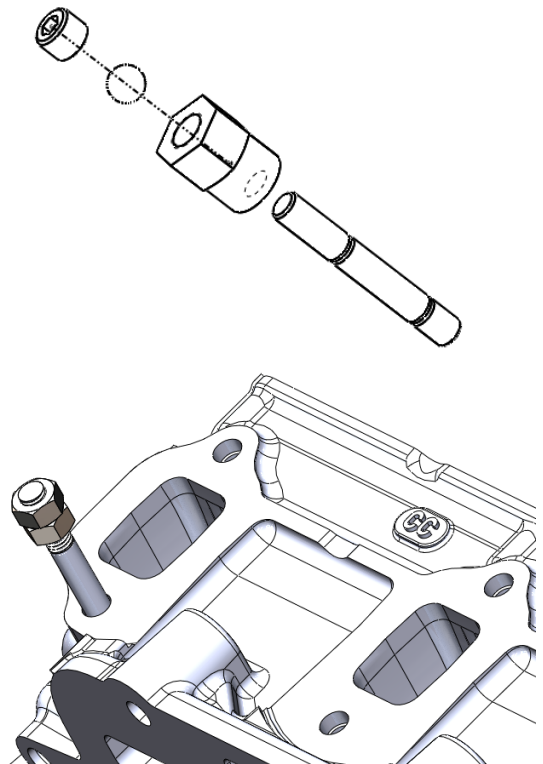
Use the provided stud install tool (1462434) to fully thread in and torque all M8 studs.

Install and torque new M8x1.25x50 studs (1462432) to into the head.

**Thread the shorter end into the head.**

**Torque to 9.5 ftlbs (115 inlbs) dry.**

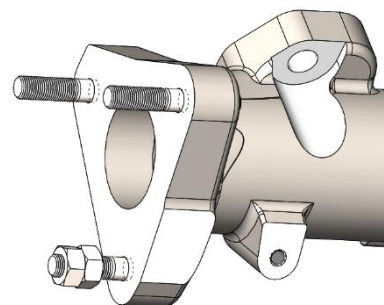
If penetrating fluid is present in the thread, reduce the torque specification by 40% (9.5ftlbs dry = **5.7ftlbs** lubricated).



Install and torque new M8x1.25x35 studs (FT-11559036) into the end of the manifold.

Thread the shorter end in first.

**Torque to 9.5 ftlbs (115 inlbs) dry.**



Install the manifold gasket (1405901) and longer BD spacers (1403009) and locking flange nuts (FT-11508940). Torque the manifold using the following sequence:

**Do not lubricate the threads.**

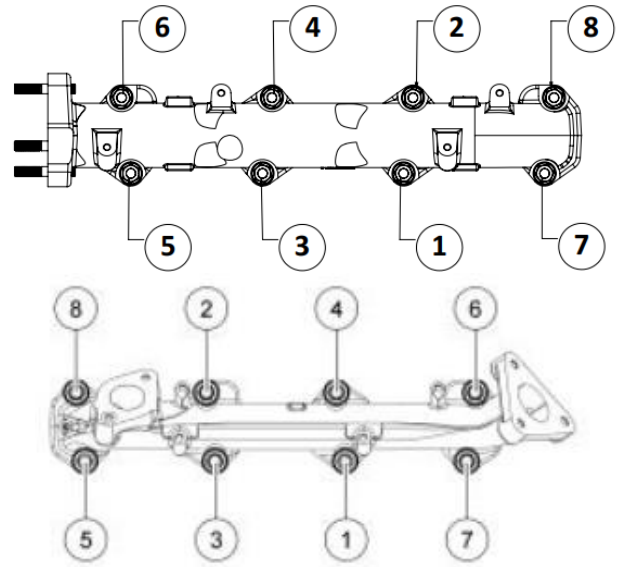
Stage 1: 13 ftlbs (159 inlbs) dry.

Stage 2: 18 ftlbs (216 inlbs) dry.

**Stage 3: Repeat 18 ftlbs (216 inlbs) dry.**

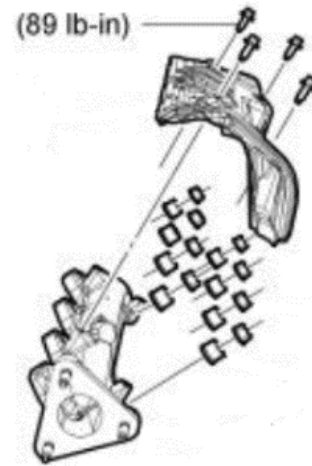
## IMPORTANT:

Do not over-torque the stud. Between stage 1 and stage 3 torque steps the nut should not rotate more than 90 degrees. If the stud has started to yield, the stud and nut must be replaced.



Install both heat shields.

**Tighten to 7.4 ftlbs (89 inlbs)**



Install the turbocharger and tighten the fastening bolts in the following sequence:

Stage 1: 11 ftlbs

Stage 2: 41 ftlbs

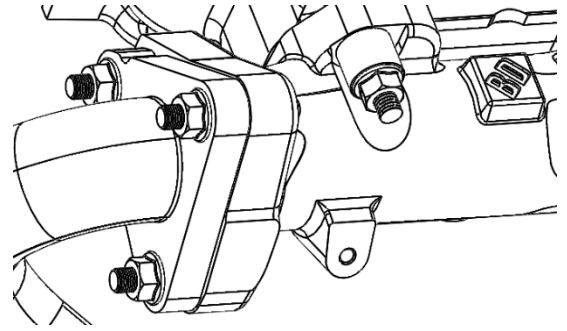




---

Install the cross over pipe gasket (BC3Z-6N640-A) and cross over pipe using the supplied flange lock nuts (FT-11508940).

**Torque nuts to 12 ftlbs (144 inlbs)**



---

Install the manifold to EGR gasket (HC3Z-9E464-A) to the EGR tube.

**Tighten to 89 inlbs**

