



INSTALLATION INSTRUCTIONS
INS251

2012-2018 FORD FOCUS (ST)

THROTTLE BODY

Part # 1898



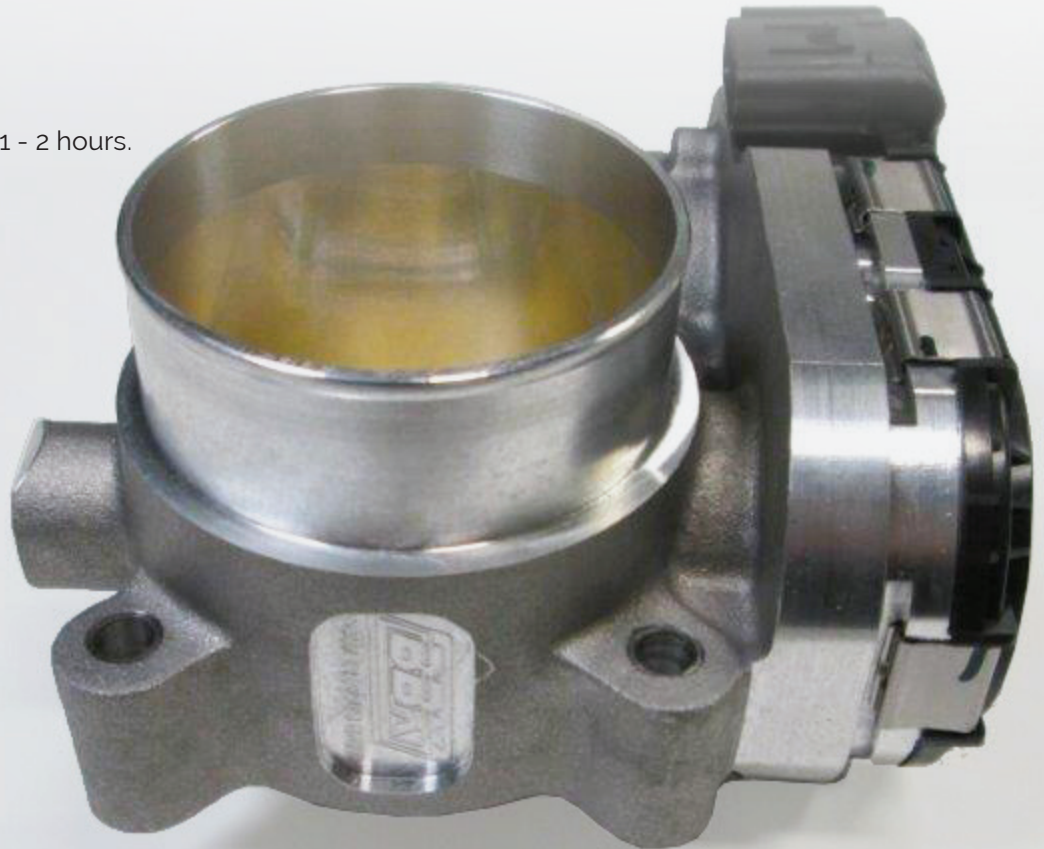
Special Tools required: 7, 8, 10 and 13mm sockets and extensions, T-30 torx bit



Install Time: Approximately 1 - 2 hours.



Difficulty: Average



MADE IN U.S.A.

IMPORTANT: All appropriate safety equipment and gear must be used during the installation of this or any BBK Performance products or any time you work on a vehicle. BBK Performance Inc. accepts no responsibility for injuries or damage caused by or during the installation of this product.

UPDATED LAST: February 2018



STEP 1

Start with jacking up vehicle using level surface and support with jack stands or work on a vehicle lift to access throttle body from underneath the vehicle. Also disconnect positive battery cable using 10mm socket.

STEP 2



Start by loosening factory coupler clamp using 7mm socket do not remove.

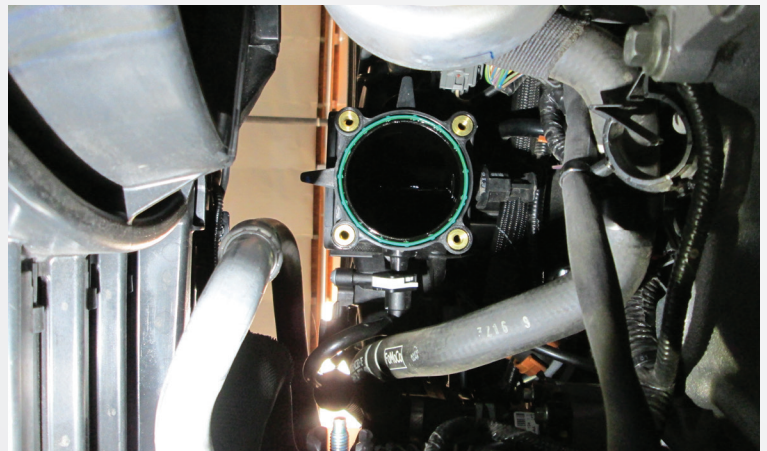
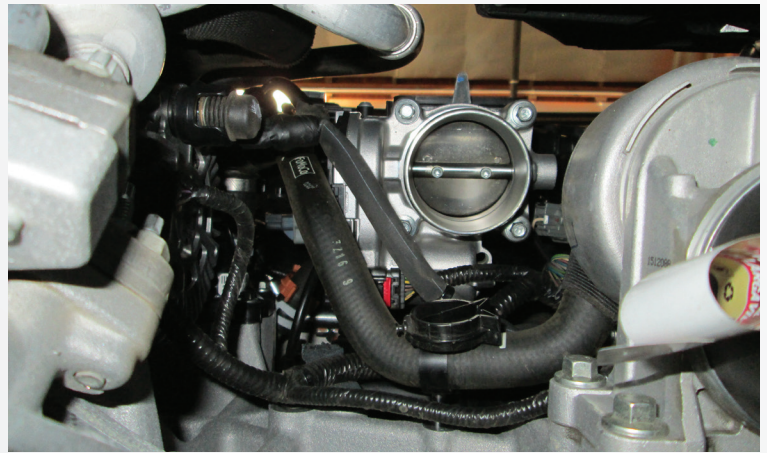
STEP 3

From underneath vehicle remove factory chassis cover to access throttle body using a T-30 torx bit. Now pull down on the intake tube to the throttle body and set aside.

STEP 4

Now looking up at throttle body using 13mm socket disconnect power-wire from alternator for better access to throttle body.

STEP 5



Disconnect signal plug from throttle body then using 8mm socket and extensions remove factory throttle body.

 **MADE IN U.S.A.** 

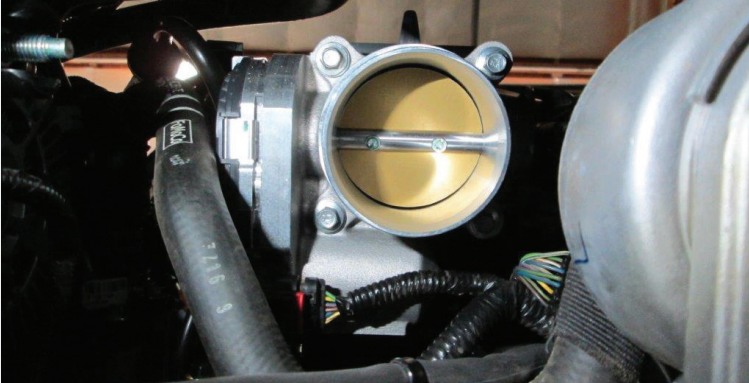
IMPORTANT: All appropriate safety equipment and gear must be used during the installation of this or any BBK Performance products or any time you work on a vehicle. BBK Performance Inc. accepts no responsibility for injuries or damage caused by or during the installation of this product.

UPDATED LAST: February 2018



FOLLOW THESE INSTRUCTIONS CAREFULLY TO ENSURE CORRECT FITMENT AND OPERATION

STEP 6



Now reverse all processes installing BBK throttle body, alternator wire, intake tube, chassis cover, etc.

 **MADE IN U.S.A.** 

IMPORTANT: All appropriate safety equipment and gear must be used during the installation of this or any BBK Performance products or any time you work on a vehicle. BBK Performance Inc. accepts no responsibility for injuries or damage caused by or during the installation of this product.

UPDATED LAST: February 2018



FOLLOW THESE INSTRUCTIONS CAREFULLY TO ENSURE CORRECT FITMENT AND OPERATION

GAS PEDAL/THROTTLE BODY IDLE RELEARN PROCESS

With the addition of the larger bore throttle body and its larger intake flap, the gas pedal and throttle body must be re-synched before starting the engine. This must be done to prevent a check engine light for "increased idle". The procedure is simple.

After installation instructions are complete, please follow the procedures below. If throttle body has already been installed, please just follow steps 1-4.

STEP 1

Disconnect battery for 5 minutes. Reconnect or use a code reader to clear any stored codes in the computer.

NOTE: IF THIS IS A NEW INSTALL, PROCEED TO STEP 2.

STEP 2

Turn ignition key to on position, do not start the engine.

STEP 3

Slowly depress the gas pedal to the floor, and then slowly release it. Do this three (3) times. On the third press hold pedal to the floor until the check engine light flashes release the pedal and turn the key off.

STEP 4

Now start engine. The gas pedal is now in synch with the larger throttle body.

 **MADE IN U.S.A.** 

IMPORTANT: All appropriate safety equipment and gear must be used during the installation of this or any BBK Performance products or any time you work on a vehicle. BBK Performance Inc. accepts no responsibility for injuries or damage caused by or during the installation of this product.

UPDATED LAST: February 2018

Discover other performance fuel system parts on our website.