



baja designs[®]
The Scientists of Lighting

**Ram Rebel/TRX 1500, Bumper 20in OnX6 / S8
Kit Instructions
44-8051, 44-8050**



Tools Required

- 8mm, 10mm, 7/16", 16mm, 18mm socket
- Cutting tool (oscillating tool suggested)
- Standard flat head screw driver

1. Using a 16mm socket, remove the (6x) bolts securing the skid plate.



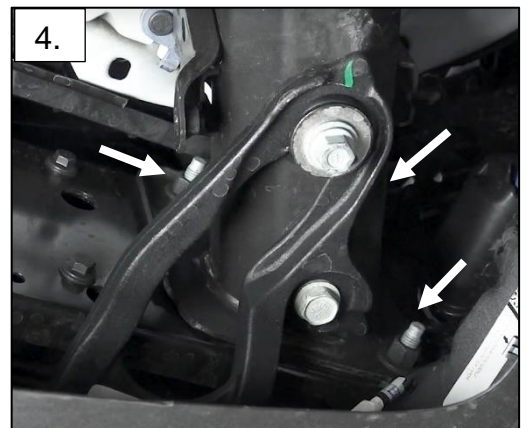
2. Using a 8mm socket, remove the (5x) bolts in the front fender wells securing the inner liner. Do the same on the opposite side.



3. On the driver side frame rail and wheel well, Disconnect the main bumper harness.



4. Using a 18mm socket, remove the (6x) nuts mounting the front bumper.
Note: there is 3 per side.



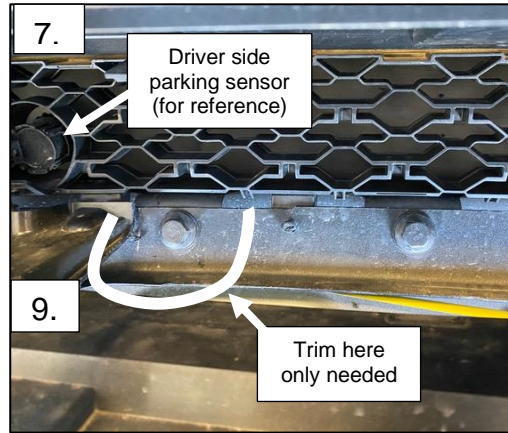
5. Carefully pull on the bumper and set aside. Having two people do this step is suggested.



6. Begin trimming the shrouding by removing the (3x) vertical supports.



7. Trim the lower plastic shroud covering the (2x) bolts going to be used for mounting the light.
Note: The picture shows the entire shroud cut out, only a smaller cut is required for the bracket and bolt.



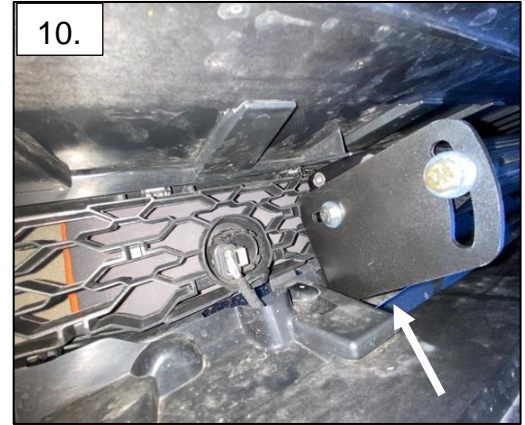
8. Unlock the clips on the top shroud allowing it to flex. (not completely removed) Pry open the shroud and rout the light bar through the opening.



9. Using a 14mm socket, remove the (2x) outer bolts. Mount both the driver side and passenger side brackets to the light.



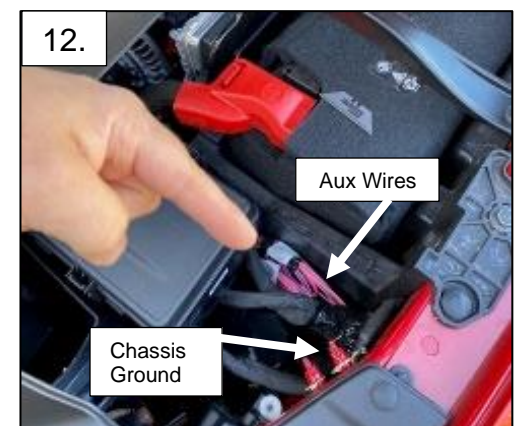
10. Using the existing hole location, Mount the bracket with the supplied 1/4-20 hardware.



11. Re-install the bumper in the reverse order. Route the up-fitter harness up to the battery and fuse block on the driver side.



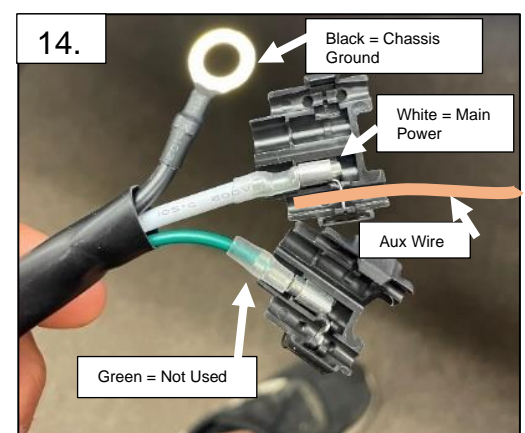
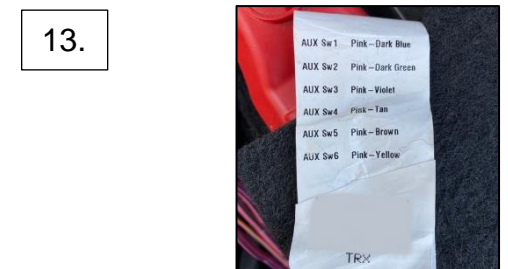
12. Locate the up-fitter wires & chassis ground next to the fuse block.



13. Choose the desired Auxiliary switch wire. All are acceptable.

Circuit Function	Fuse	Wire Color
Aux Switch 1	F001A - 50 Amp	Pink/Dark Blue
Aux Switch 2	F002A - 20 Amp	Pink/Dark Green
Aux Switch 3	F003A - 20 Amp	Pink/Violet
Aux Switch 4	F004A - 50 Amp	Pink/Beige
Aux Switch 5*	F42 - 20 Amp	Pink/Brown
Aux Switch 6*	F50 - 20 Amp	Pink/Yellow

14. Onx6 Light bar only: Using a 10mm socket, attach the ring terminal on the harness to the chassis ground. Use the splice connector on the white wire and attach it to your desired auxiliary wire. Close the connector and test the light. The green wire is unused and should be taped to the side.



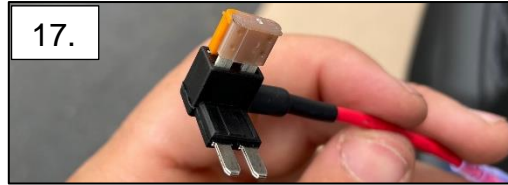
15. S8 Light bar only: If you desire to run the back lighting feature as shown, proceed through steps 16 – 18. If not, copy step 14 with the green wire and the project will be done.



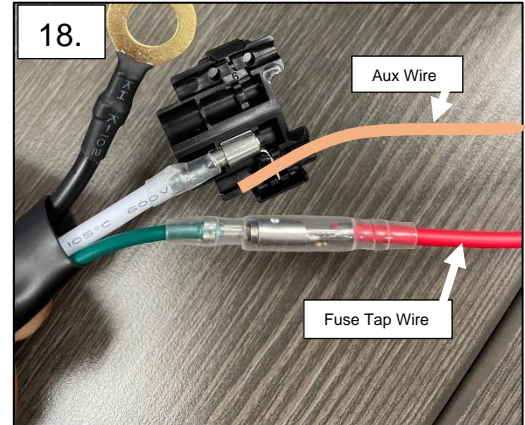
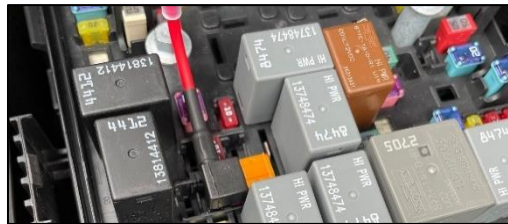
16. Open the fuse block located behind the driver side headlight. Locate fuse #F37.



17. Remove the OEM fuse and place into the fuse tap. Apply the fuse tap into the OEM fuse location.



18. Place the desired Aux wire into the splice connector. Remove the plastic splice connector housing on the green wire. Place the male bullet connector on the green wire into the fuse tap wire.



Tie all wires away from sharp, hot, and/or rotating components.

Re-torque all the fasteners after 100 miles.

Your install is now complete! Thank you for choosing Baja Designs.