



baja designs[®]
The Scientists of Lighting

44-8049 Dodge, Ram TRX (21-On), 20" S8 Grill Kit Instructions



Tools Required

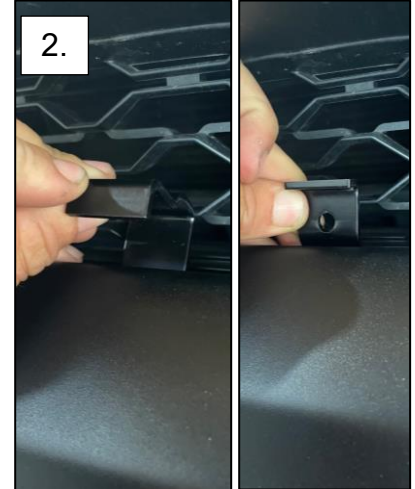
- *10mm, 7/16", 9/16" wrench
- *10mm, 7/16", 9/16" Socket
- *Flat Head or Trim Removal Tool

Product Warning:

This light will interfere with your forward-facing camera. View installation example in last picture to ensure you're happy with the final product before starting the install.

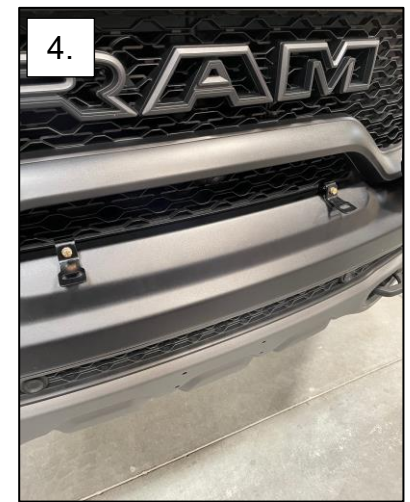
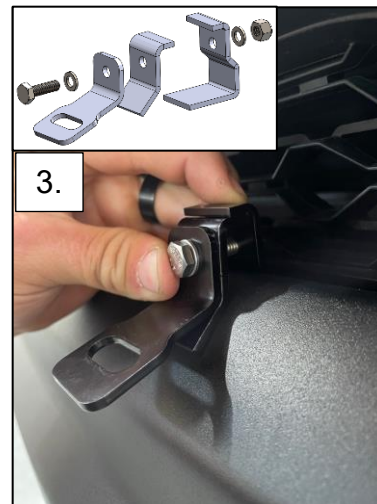
1. Apply the supplied EPDM rubber to the bottom of the forward-facing clasp bracket.

2. Route the back facing clasp bracket around the edge of the bumper.



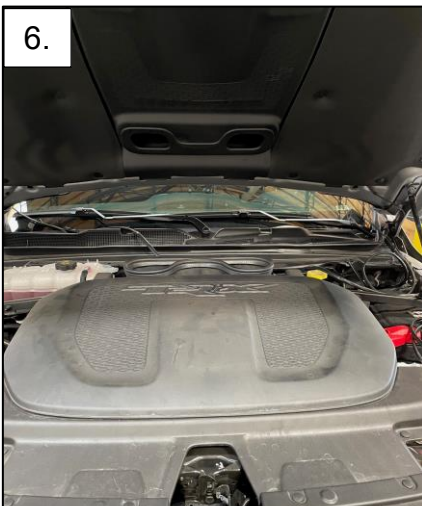
3. Fasten the S8 bracket onto the two clasping brackets. Use a 7/16" wrench and socket to fasten down the bracket. Do not completely tighten down, allow the bracket to be re-positioned on the bumper.

4. After applying both brackets, position the brackets evenly and close to the width of the light bar tabs.



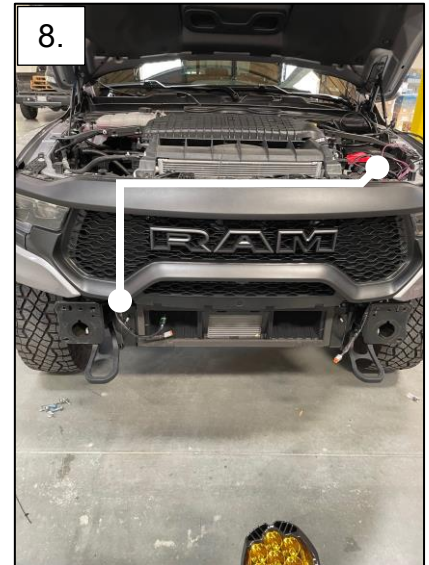
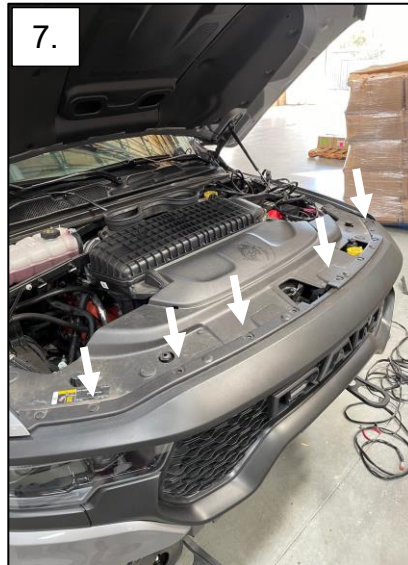
5. Place the light bar on the brackets. Using a 9/16" wrench, torque the light bar to the brackets. Center the light with the grille. Angle as evenly as possible. Re-adjust when the light is wired.

6. Remove the engine cover by pulling up in the front. Once the front clips are released, pull on the cover to the front of the vehicle.



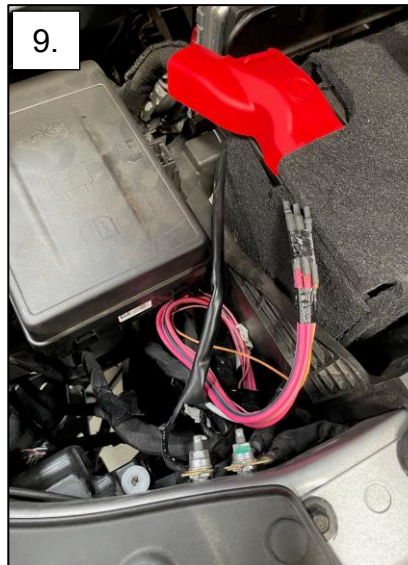
7. Remove the 16x plastic clips securing the plastic radiator shroud.

8. Begin to route the wire harness to the light bar.

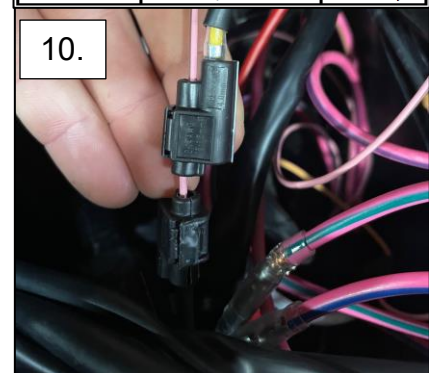


9. Route the clasp connectors on the wire harness to the relay box. Located on the driver side of the relay box are the upfitter wires. Pull the wires out and separate them.

10. Locate AUX wire 5 or 6, close the clasp connector on the white wire over the auxiliary wire chosen. If the light bar's backlight feature is desired, close the clasp connector on the green wire over the opposite wire chosen for the light. This will allow you to run the amber backlighting separate from the light. If you need to use Aux 1 – 4, you will need the additional 12ga splice adapter.



Aux Switch	Color	Rating
Aux 1	Pink/Dark Blue	50Amp
Aux 2	Pink/Dark Green	20Amp
Aux 3	Pink/Violet	20Amp
Aux 4	Pink/Beige	50Amp
Aux 5	Pink/Brown	20Amp
Aux 6	Pink/Yellow	20Amp



11. Next to the fuse block is a chassis ground. Using a 10mm socket, remove the nut & place the 3/8" ring terminal on the black wire to the chassis ground. Torque the chassis ground nut with all wiring attached.

*Tie all wires away from sharp, hot, and/or rotating components.

* Re-torque all the fasteners after 100 miles.

*Your install is now complete! Thank you for choosing Baja Designs.

