



baja designs®

The Scientists of Lighting

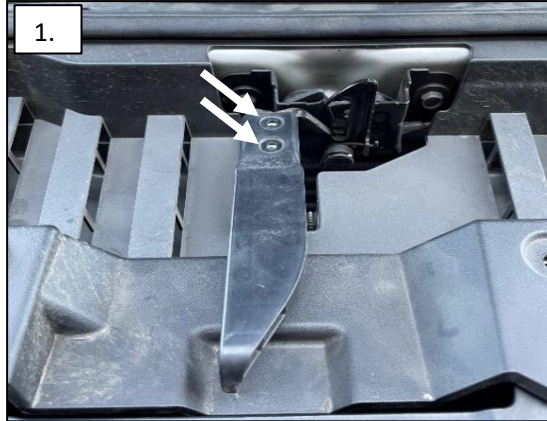
44-7854 GMC, 2500 & 3500 (20-On), Behind Grill Kit, Dual S8



Tools Required

- * Trim Removal Tool Or Flat Head Screw Driver
- * Zip Tie Cutters
- * T-15 Torx Bit
- * 7mm, 10mm, 7/16", 13mm, 15mm, 18mm socket

1. Using a T-15 Torx Bit, remove the 2x fasteners securing the hood latch handle.



2. Using a trim removal tool or flat head screw driver, remove the 10x push pins securing the top radiator shroud.



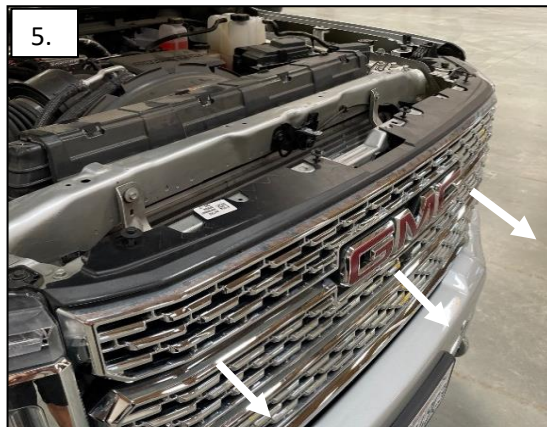
3. Using a 10mm socket, remove the 4x fasteners securing the top of the grille.



4. Gently pull on the bumper cover's to release the self locking tabs. Look behind the cover to see a second locking tab on the side. Using needle nose pliers, collapse the locking tab to release the bumper cover further. This will help with re-installing the grille.



5. Gently pull on the grill in the areas shown to release the self locking tabs. Before removing the grill completely, un-plug the front facing camera (if-equipped).



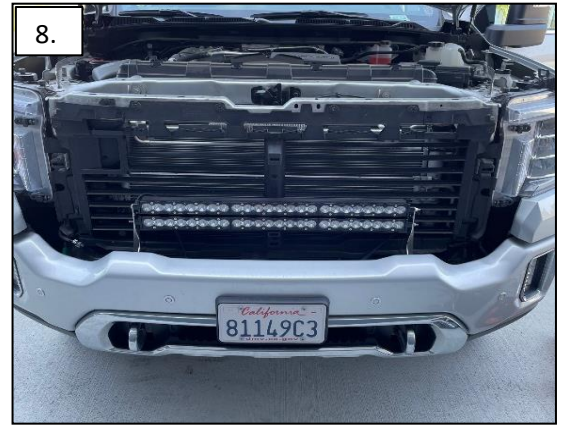
6. Using an 18mm socket, remove the 2x bolts securing the top of the bumper.



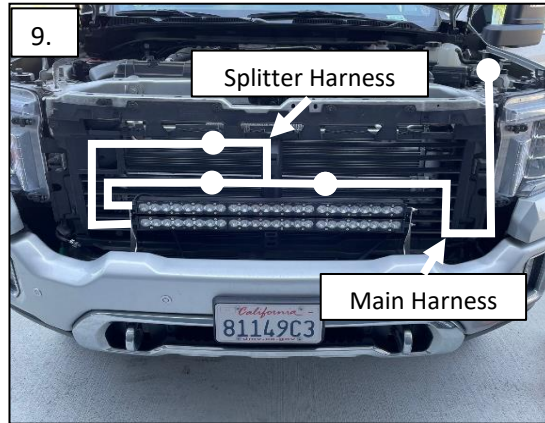
7. Mount the 2x supplied brackets with the OEM hardware onto the bumper. Leave the brackets loose to have some adjustability when installing the lights.



8. Place the S8 light bar in-between the brackets. Use the top and bottom slot.



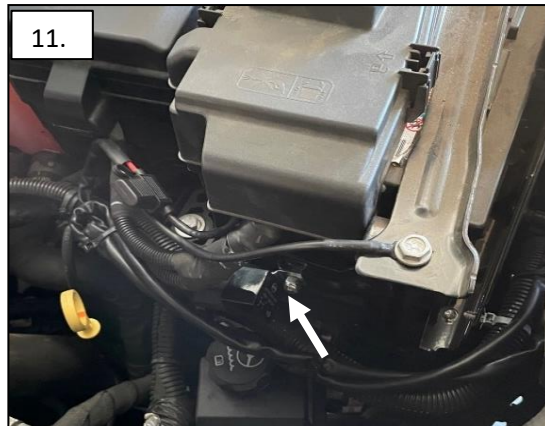
9. Plug in the splitter harness into the two light bars, then the splitter harness into the main harness.



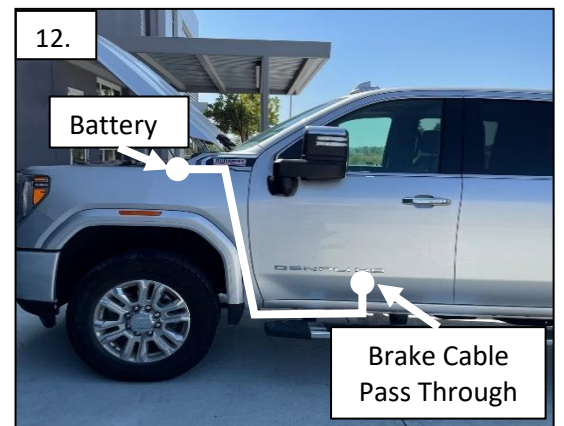
10. Route the main harness to the battery. Using a 10mm socket, mount the 3/8" Red wire ring terminal to the battery. Using a 13mm socket, mount the 3/8" black ring terminal to the battery cradle.



11. Located on the side of the battery cradle is a flange with a 1/4" hole. Using a 7/16" wrench and socket, use the supplied hardware to mount the relay.



12. Route the switch lead from the battery down the inside of the fender to the center of the driver floor board.



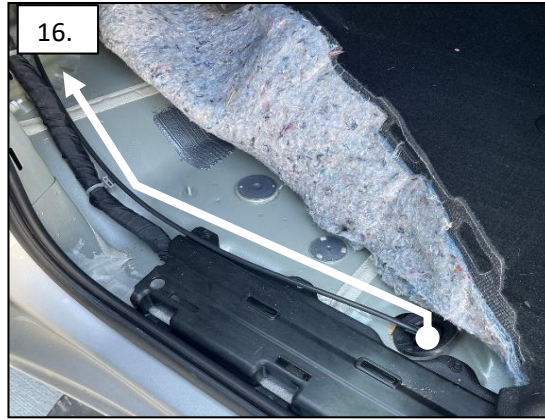
13. On the bottom of the floor is the brake cable pass through, Route the switch lead through it to the inside of the cab.



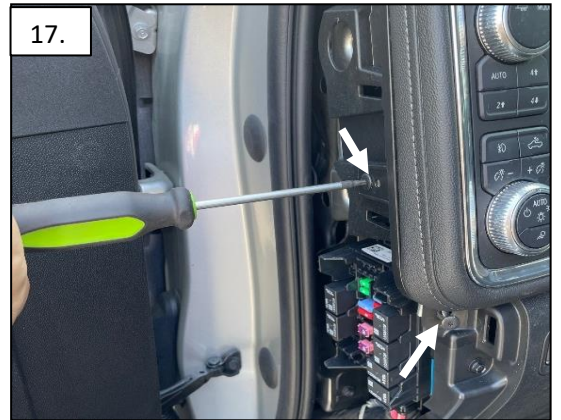
14. Begin removing the plastic trim by pulling up on the self locking tabs. Remove the fuse box cover inside the cab.



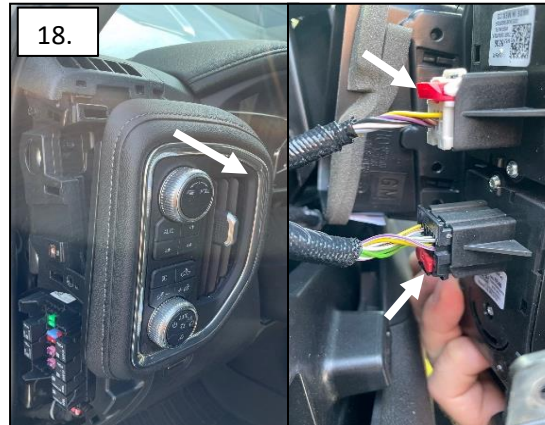
16. Once the trim is removed, pull up on the carpet to show the brake cable routing to the dash. Route the switch lead with the brake cable.



17. To allow more access for mounting the switch, begin removing the dash using a T15 torx bit on the two fasteners shown.



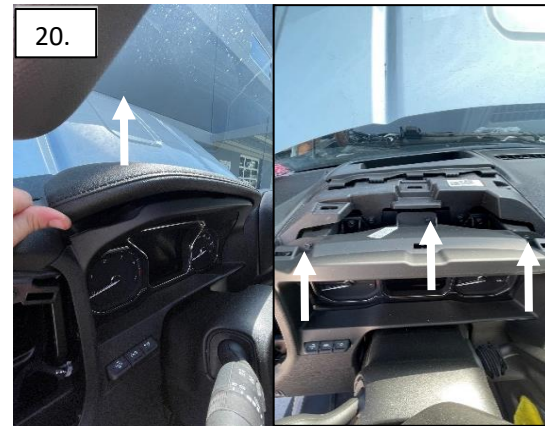
18. Pull on top of the panel to release the self locking tabs. On the back side of the panel, remove the two connectors by pulling on the red tab and pressing down on the release tab.



19. Using a 7mm socket, remove the 2x fasteners securing the dash.



20. Pull up on the gauge cluster cover releasing the self locking tabs. Using a 7mm socket, remove the 3x fasteners on the gauge cluster cover.



21. Pull on the cluster showing the last fastener on the lower dash panel. Using a 7mm socket, remove the fastener.



22. Pull on the panel giving full access to the back of the panel.



23. On the face of the panel, mark the location desired for the switch. Drill a 3/4" hole and mount the switch through.

