



baja designs[®]
The Scientists of Lighting

Ford Super Duty (2011-2016) – Front Bumper kit Instructions



2011-2016 Ford Super Duty Front Bumper Kit

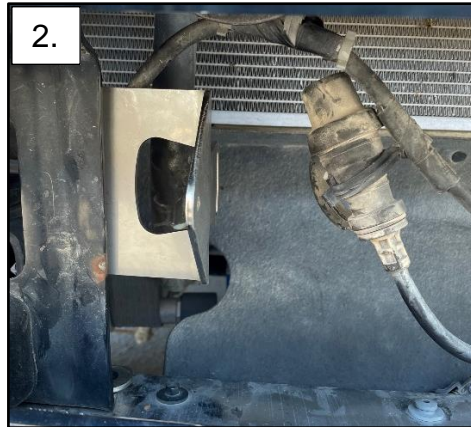
Tools Required

- 5.5mm, 8mm, 10mm, 13mm, 7/16" Socket
- 10mm, 7/16" wrench

1. Using A 13mm socket, remove the 2x bolts mounting the bumper supports.



2. Install the bracket as shown using the 2x bolts removed from step 1. Leave bolts loose.

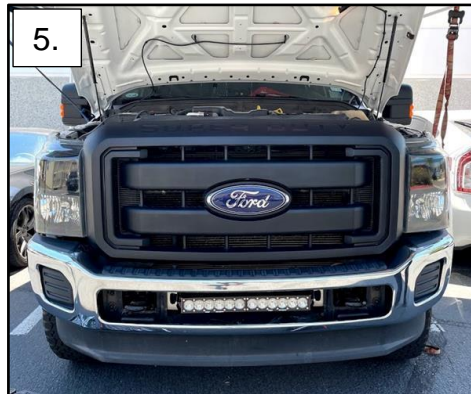


3. Once one side is complete, follow steps 1-3 for opposite side.

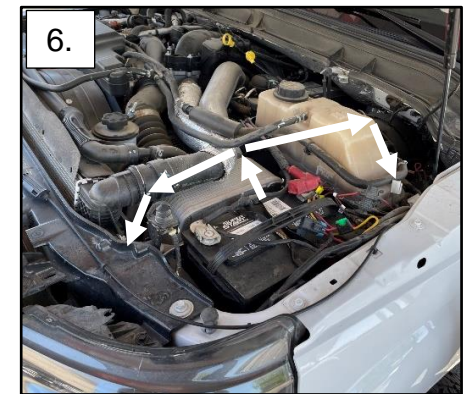
4. Slide the light bar in between the two brackets. Using the supplied hardware, mount the light with the 4x bolts. Tighten the 4x bumper support bolts



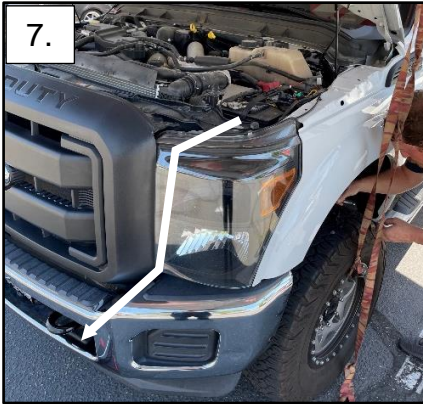
5. Adjust the light bar by Rotating until the desired lighting angle is achieved. Using the 7/16" wrench and socket torque down the bolts to 4 ft-lbs.



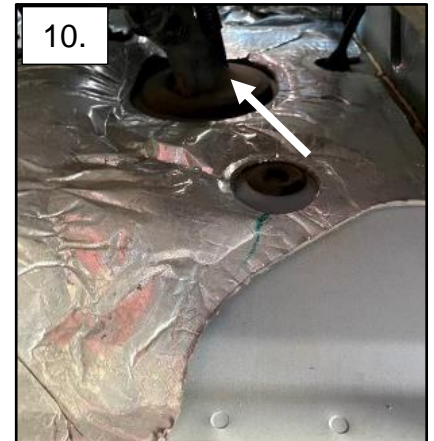
6. Using a 10mm socket, remove the pinch bolt nuts from the battery terminal. Using the ring terminals on the harness, attach the harness to the battery, starting with the negative (black) wire first. Once both terminals are connected, route the light bar plug down behind the driver side light & the switch down the face of the fire wall.



7. Route the wires as shown behind the headlight & bumper. Keep away from any sharp edges.
8. Route the harness to the passenger side of the light. Connect the harness into the light bar.



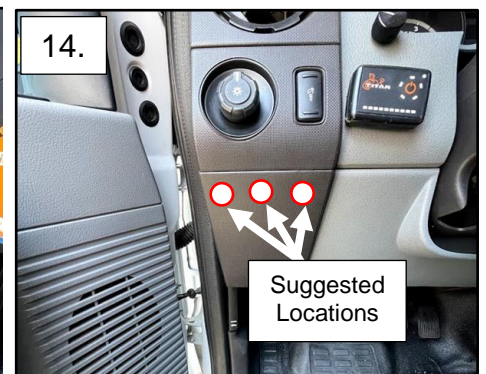
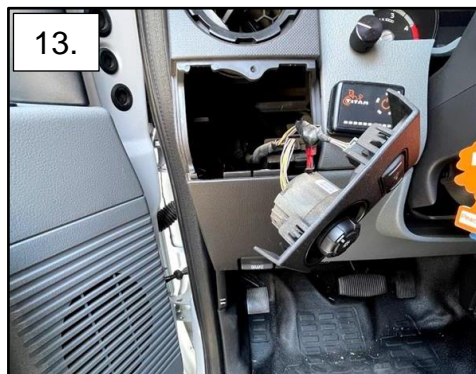
9. Using the 5.5mm socket, remove the 3x bolts mounting the fender well cover.
10. Behind the cover is the fire wall grommet. Carefully open the center of the grommet to route the switch through the firewall. Do not drill through the grommet to ensure the seal remains water tight.



11. Route the switch through the fire wall and up behind the dash.
12. Remove the light switch panel by carefully prying on the corners.



13. Once removed, route the wires to the top of the plastic opening.
14. Using the suggested mounting location. Drill through the plastic to mount the supplied switch. Once the switch is mounted, press the light switch panel back into place.



Tie all wires away from sharp, hot, and/or rotating components.

Re-torque all the fasteners after 100 miles.

Your install is now complete! Thank you for choosing Baja Designs.

Check out the collection of off-road lights we offer.