



baja designs[®]
THE SCIENTISTS OF LIGHTING

Ram (19+) 2500-5500 7 XL Linkable kit Instructions



Ram 2500-5500 19+ 7 XL Linkable Bumper kit Instructions

- Tools Required:
- 24mm Socket and wrench (Breaker bar)
 - 18mm Wrench & Socket
 - 10mm Wrench & Socket
 - Trim tool or Flathead Screwdriver
 - Razor knife
 - 1/2" & 7/16" wrench and socket
 - 3/4" Stepped Drill

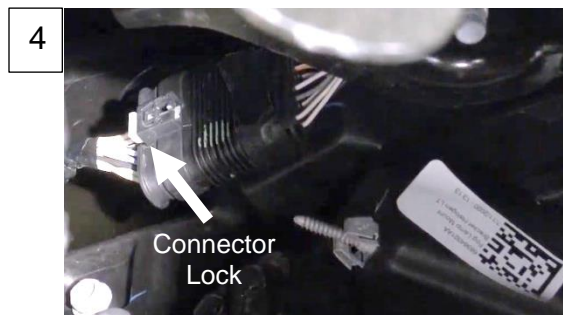
1. Place vehicle in park, turn off, and disconnect the driver side battery terminals (1/2" wrench)
2. The front lower bumper valence will need to be removed.



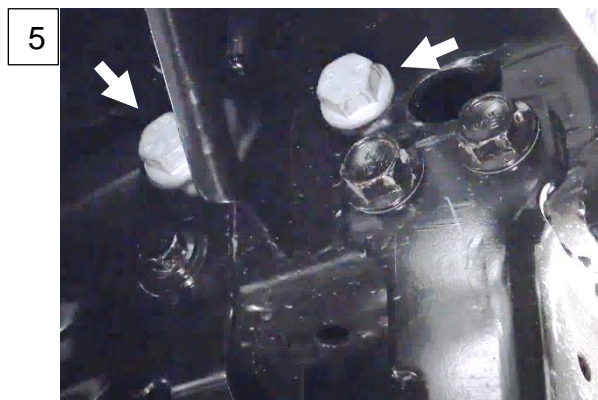
3. With the flathead screwdriver, remove the two circled plastic fasteners. Remove white arrowed fasteners with 10mm socket wrench. Remove black arrowed fasteners with 10mm wrench.



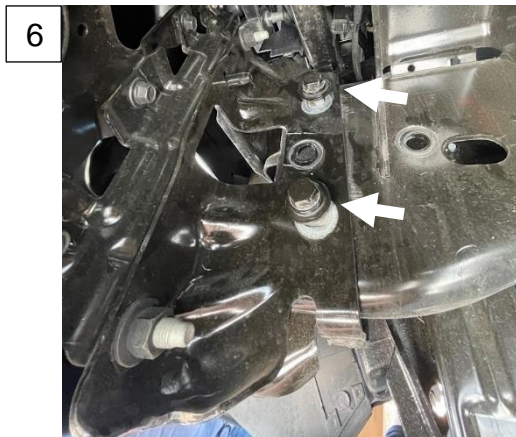
4. Behind the bumper, above the driver side fog light, the bumper harness connector will need to be removed. Carefully pry the white connector lock to the driver side and then the connector tab can be squeezed and disconnected.



5. With the 24mm socket and breaker bar, remove the two arrowed tow hook bolts (driver side outboard frame rail shown). Place captive nuts aside. Remove the tow hook and repeat for passenger side.



6. With the 18mm Socket and wrench, loosen the two arrowed bolts on the driver side bumper mounts. Remove the lower bolt and nut. Leave the upper bolt in for the moment. Repeat for the passenger side.



7. With an assistant, support the bumper on both sides and remove the remaining bumper mounting bolts. Place the bumper down onto a soft work surface.



8. With the provided rubber adhesive backed strips, place three on the underside of each bracket. (Driver side shown)



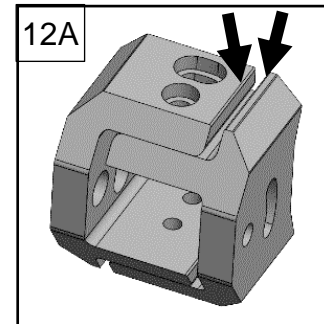
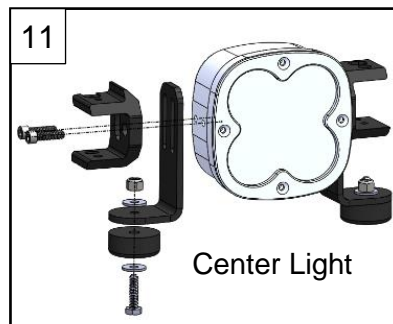
9. With the trim tool, remove the plastic weather seal fasteners. With the 13mm socket, remove the two white arrowed bolts and place the bracket over the bumper under the weather seal. (Driver side shown)



10. With a razor knife, trim the weather seal along the dotted line as shown to allow space for the bracket. Install the weather seal fasteners. Push the bracket down against the bumper and tighten the bolts with the 13mm socket. Repeat steps 9-10 for the opposite side. Reinstall the bumper back onto the vehicle by following steps 2-7 in reverse.



11. With the provided Allen wrench, remove the center light housing bolts on both sides. With the provided support brackets and longer hardware, assemble the center supports as shown. Then use the 7/16" wrench and socket to attach the rubber feet to the support brackets.



12. The light will need to be arced to fit onto the vehicle. Loosen the circled bolts with the 3/16" Allen wrench on the top and bottom (12B). Tighten each link so that the arrowed edges are parallel for all the links except the ends. Loosen the end links and rotate to full lock with both sides of the light parallel (12A).



13. Mount the light to the brackets using the provided Allen wrench, 7/16" socket wrench, and the provided hardware. Loosen the center light housing bolts enough to slide the support brackets. Have an assistant pull up (0.25"-0.5") on the light and slide the support brackets down and back until they contact the bumper. Tighten the housing bolts.

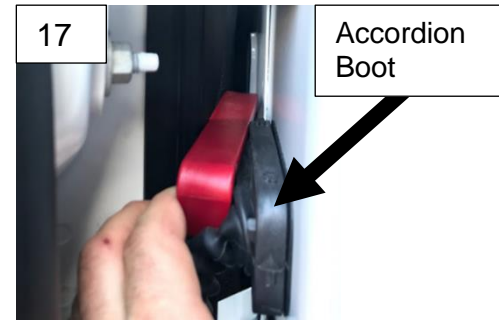


14. Route the light plug end of the harness from the engine bay down to the light following the path shown.



15. Following the path shown, attach the battery leads of the harness to the battery (starred) and mount the relay to a nearby 10mm hex head bolt.

16. Remove the main switch from the switch leads. Route the switch leads into the driver side inner fender shown by the star in the image. Excess harness length can be tied up and placed into the inner fender after installation.



17. Open the driver side door and observe the gap. Gently pry back the inner fender foam seal and route the switch leads through.

18. Carefully pry the six lower door sill trim clips. (Trim is shown removed for detail). Unclip the flap next to the parking brake pedal.



19. Remove the arrowed rubber grommet. Puncture the grommet, re-mount, and run the switch wires through the grommet into the cab. Install flap and door trim.



20. Drill 3/4" hole in desired dash location. Mount switch and reattach wires. Tie all wires away from any hot and/or rotating components.

Re-torque all the fasteners after 100 miles.

Your install is now complete! Thank you for choosing Baja Designs.