



baja designs.
The Scientists of Lighting

2011-2016 Ford Super duty Fog Pocket Kit Instructions (44-7605)





baja designs.
The Scientists of Lighting

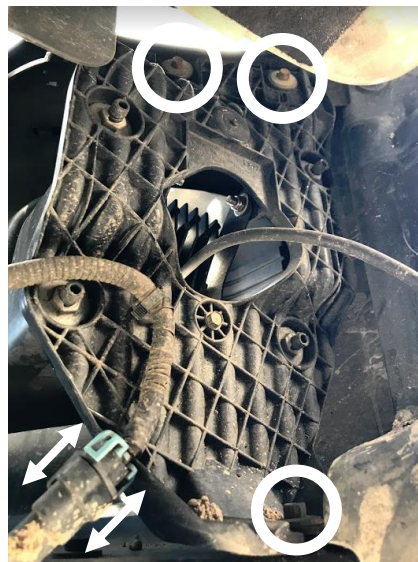
11-16 Ford, Super duty Fog Pocket kit Instructions

Tools Required

- 10mm wrench
 - 10mm socket wrench
 - 7/16" wrench
 - 7/16" socket wrench
 - 8mm socket wrench
 - 1/2" Socket wrench
 - 4mm Allen wrench
 - 3mm Allen wrench
1. To begin, locate the bracket at the front of the passenger side wheel well pictured below. With the 1/2" socket wrench, remove the four bolts. Place bracket aside. Repeat for the driver's side.



2. Unplug the OEM fog light connector from the harness. With the 8mm socket wrench, remove the three bolts holding on the fog light assembly circled below. Carefully remove the assembly from the vehicle. Repeat for the driver's side.



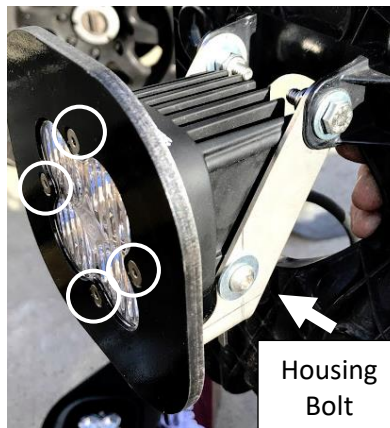


baja designs.
The Scientists of Lighting

3. Remove the plastic fog pocket shroud with the $\frac{1}{2}$ " socket wrench by removing the four fasteners circled below. Repeat for opposite side. Remove the factory fog lamp from the plastic bracket.



4. Using the 3mm Allen wrench, remove the four Bezel bolts (circled below) that hold on the standard Squadron bezel. Replace the bezel with the provided Super Duty bezel and retighten hardware. With the 4mm Allen wrench, screw in the Squadron housing bolts through the washer, bracket, serrated washer, and then into the light housing. Repeat for the opposite side of the housing.



5. Using the $\frac{7}{16}$ " wrench and socket wrench, tighten the $\frac{1}{4}$ " bolt into the washer, plastic bracket, steel bracket, washer, and nylon locking nut. Repeat for the adjacent fastener.

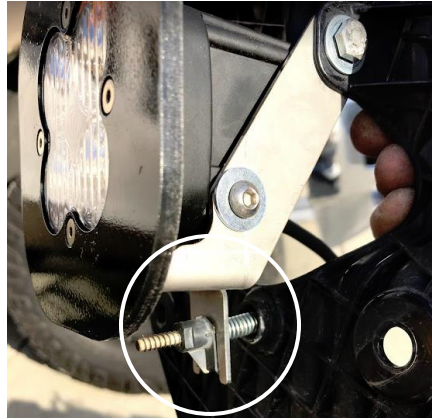
Note: steel bracket goes on the inside of the OEM plastic bracket mounts.





baja designs.
The Scientists of Lighting

6. Reuse the OEM fog lamp bracket tilt adjustment hardware with the new bracket circled below.



7. Place the OEM fog pocket shroud onto the fog lamp assembly and check the fitment of the light bezel. Adjust the housing bolts and OEM tilt adjuster until desired fitment is attained. Replace the fog pocket shroud fasteners and tighten.
8. Repeat steps 4-7 for the opposite side of the vehicle.
9. Install the new fog lamp assemblies with the 8mm socket wrench and fasteners from step 2.
10. Attach plug 'n play adapter to the factory harness and Squadron power cord. Repeat for other side.
11. Re-install the brackets from step 1 with the ½" socket wrench.

Re-torque all the fasteners after 100 miles.

Your install is now complete! Thank you for choosing Baja Designs.

Learn more about off-road lights on our website.