



baja designs[®]
THE SCIENTISTS OF LIGHTING

Ford Bronco Sport, Squadron/S1 A-pillar Light Kit

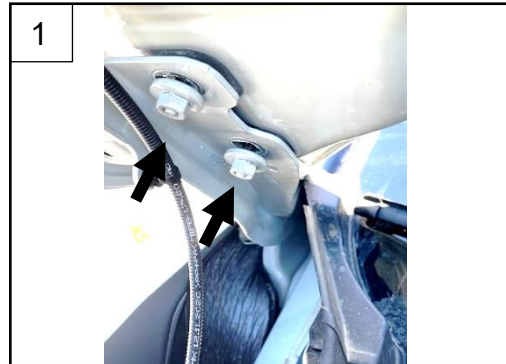


Ford Bronco Sport Squadron/S1 A-pillar Light Kit Instructions

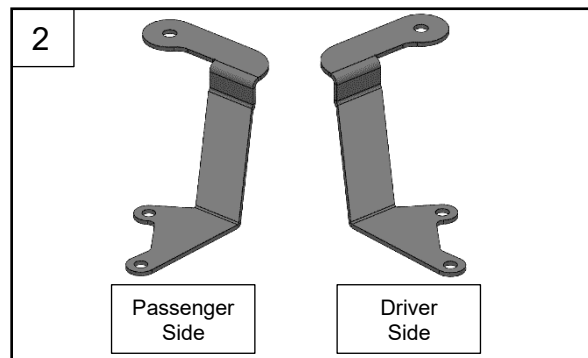
Tools Required:

- 13mm Wrench and Socket
 - Flat head and Trim tool
 - 10mm Socket and extension
 - 3/4" Step drill (Required)
- Squadron:**
- 9/16" Wrench and Socket
- S1:**
- 7/16" Wrench and Socket
 - 4mm Allen Wrench
 - 3mm Allen Wrench

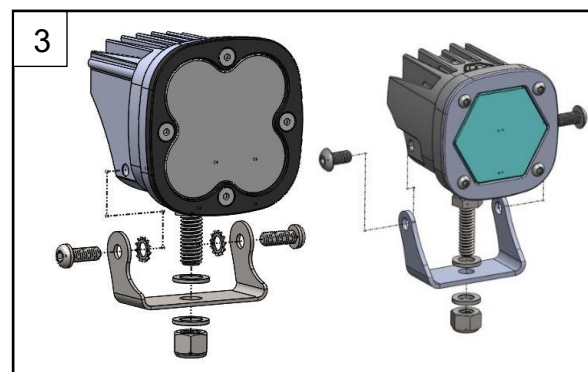
1. Open the hood and remove the passenger side hood hinge nuts.



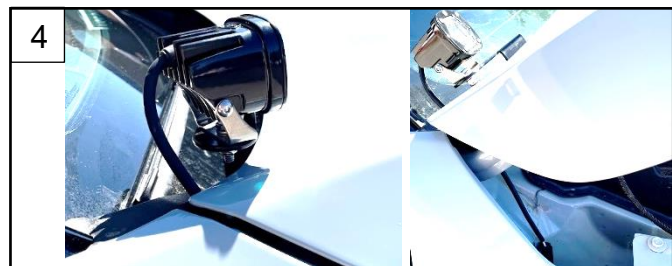
2. Place the passenger side bracket over the bolts and tighten the nuts. Repeat for the driver side.



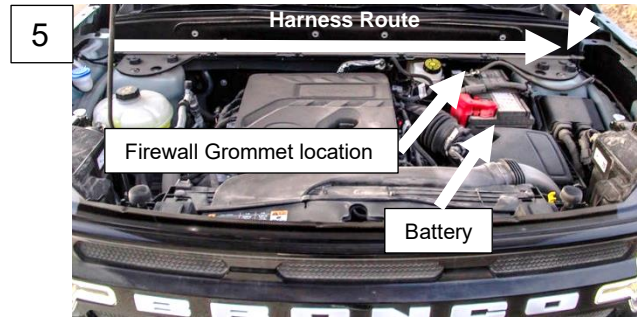
3. Assemble each Squadron (or S1) and mount them to the A-pillar brackets with the 9/16" (or 7/16") wrench and socket.



4. Route the power cords into the wiper cowl area under the hood.



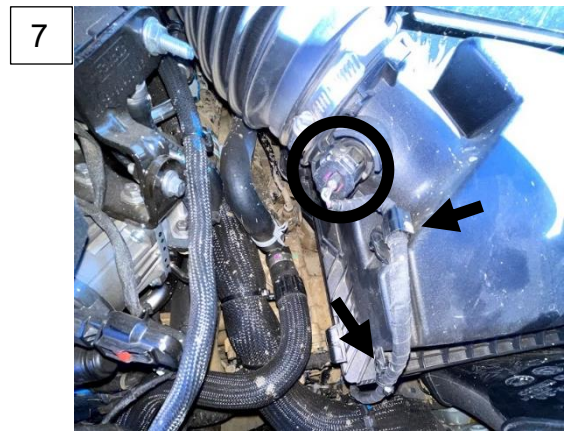
5. Attach harness leads to each power cord and route along the upper firewall. Use the provided wire ties to fasten the harness to the plastic inner wiper cowl.



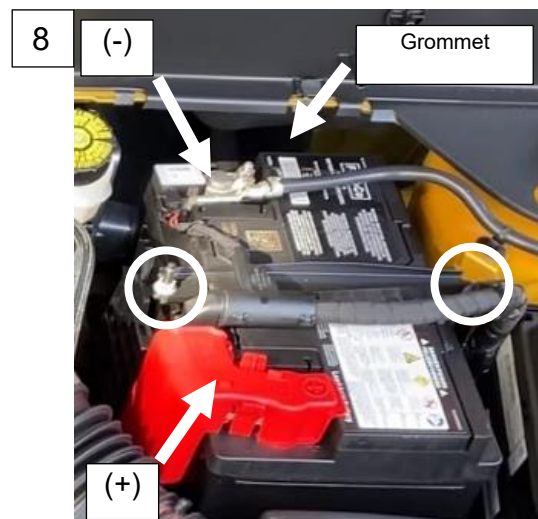
6. To route the switch through the firewall, the battery will need to be removed. First, remove the intake ducting from above the radiator by prying the two arrowed plastic fasteners with the trim tool.



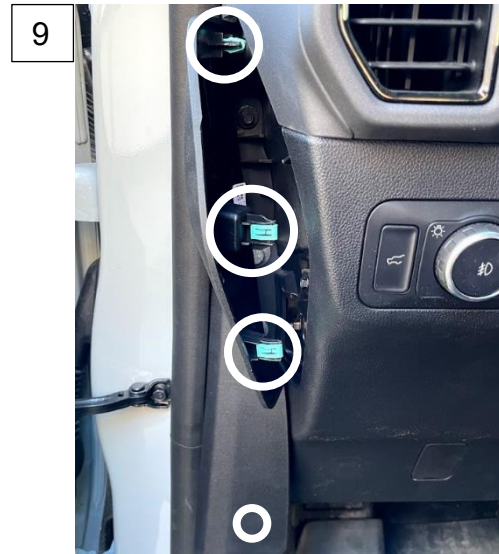
7. Remove the circled connector on the air cleaner cover and the two arrowed clips attaching the harness. Using a flathead screwdriver, remove the intake air boot clamp. Pull up on the air cleaner box to remove and set aside.



8. Loosen the circled battery clamp fasteners with the 10mm socket with the extension. Remove the battery terminals (+/-) with the 10mm socket and place them aside; black lead first. Now the battery can be slid forward and removed for the moment. Remove the arrowed firewall grommet and route the harness switch lead through. Pull enough slack in from inside the cab to reach the headlight controls.



9. Carefully use the trim tool inside the cab to remove the panel to the left of the headlight controls.



10. Carefully pull the edges of the headlight control dash panel until the clips release. Remove the arrowed headlight control unit connector.



11. With the 3/4" step drill bit, drill a hole in the circled area shown. Take a quick photo of the switch wire orientation, remove the switch wires from the switch, route through the hole, reconnect, and mount the switch. Plug the headlight module back in and replace the dash panels.



12. Install the battery and repeat steps 6-8 in reverse order, this time attaching the positive battery terminal first and then the ground terminal. Mount the relay to the bolt on the strut tower as shown in the image.



Re-torque all the fasteners after 100 miles.

Tie wires away from all hot, sharp, and/or rotating components.

Your install is now complete! Thank you for choosing Baja Designs.