



***baja designs***<sup>®</sup>  
The Scientists of Lighting

## 2019 Ford Ranger Backup Kit instructions





**baja designs**  
The Scientists of Lighting

### 2019 Ford Ranger Backup kit instructions

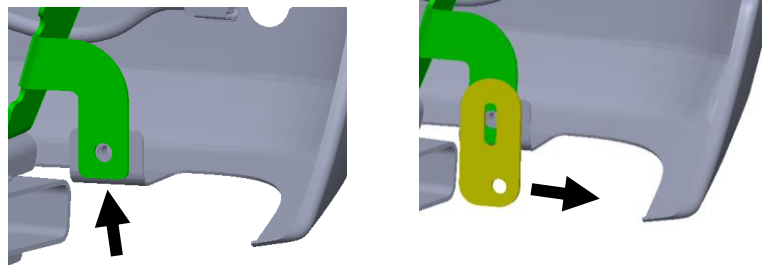
#### Tools Required

8mm socket wrench  
13mm socket wrench  
9/16" wrench and socket wrench  
4mm Allen wrench

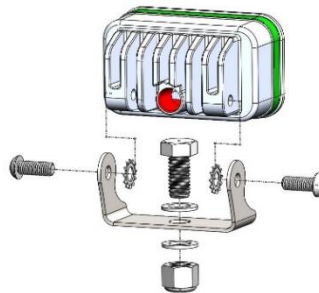
1. The reverse light brackets will mount behind the rear bumper in the circled locations below.



2. Below on the left is an image of the driver's side mounting location behind the bumper. Using a 13mm socket wrench, remove the bolt, place bracket onto the mount as shown below on the right, and lightly tighten. The single hole on the brackets should be oriented toward the sides of the vehicle. Repeat for passenger side.



3. Locate the S2/Squadron parts bags. Using the 4mm Allen wrench and 9/16" wrench and socket wrench, assemble the lights as shown in the exploded view below.

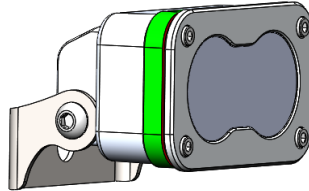


**\*Note: thread in 3/8" bolt before attaching light to bracket.**

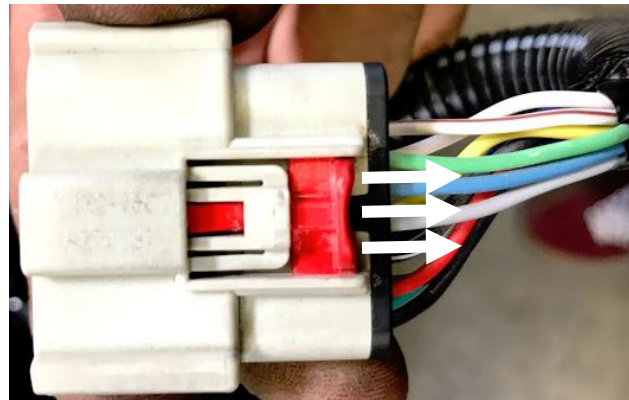
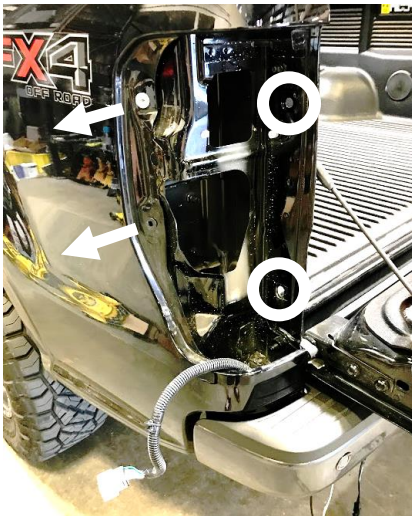


**baja designs**  
The Scientists of Lighting

4. With the light housing bolts slightly loose, rotate the light until the bottom face of the bracket is parallel with the face of the light. See image below.



5. Using the 9/16" wrench and socket wrench, mount the light assemblies to the brackets from step 2. Slide reverse light bracket up or down until desired fitment is reached. Tighten the reverse bracket down with the 13mm socket wrench, and then tighten the rest of the hardware on the light assembly. Make sure to route the power chords away from any exhaust pipes and into the backside of the bumper.
6. Now the taillight assembly will need to be removed. Open the tailgate. On the inside of the driver's side bedside, there are two 8mm hex head bolts (see image circled on left below). Remove the two bolts. Now the light will need to be pulled with constant mild force in the direction shown by the arrows below. The fastening pins will make a "pop" when the light is released.

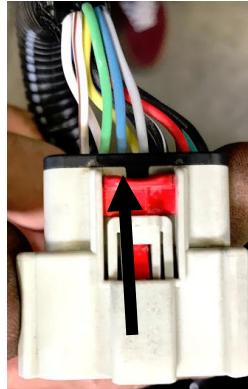


7. To disconnect the taillight plug, pull the red tab up until it appears as the picture on the right above. Now press the white detent in and pull the plug from the light.



***baja designs***<sup>®</sup>  
*The Scientists of Lighting*

8. With the reverse kit harness in hand, thread the eyelet and weatherpack connector through the hole behind the taillight and out the bottom of the vehicle. The splice connector should be left near the taillight plug. Clasp the splice connector over the light blue wire that is the third position from the left as shown below.



9. Looking under the rear bumper, find the chassis ground on the driver's side framrail. Using an 8mm socket wrench, remove the ground. Place the eyelet of the reverse kit harness over this ground and tighten. Make sure the harness is routed away from the exhaust.
10. Locate the splitter harness included with the kit and connect the plug to the reverse harness plug. Route the shorter splitter lead to the driver's side reverse light and connect the plug. Tie both reverse and splitter harnesses to the OEM harness that is behind the rear bumper and follow it to the passenger side. Connect the passenger side light plug.

Re-torque all the fasteners after 100 miles.

Your install is now complete! Thank you for choosing Baja Designs.

Rely only on high-grade off-road lights offered on our virtual shelves.