



baja designs[®]
The Scientists of Lighting

2007-2013 Chevrolet Silverado Universal 20” light bar Instructions





baja designs
The Scientists of Lighting

Silverado Universal 20" S8/OnX6 bracket kit

Tools Required

7/16" Socket

7/16" Wrench

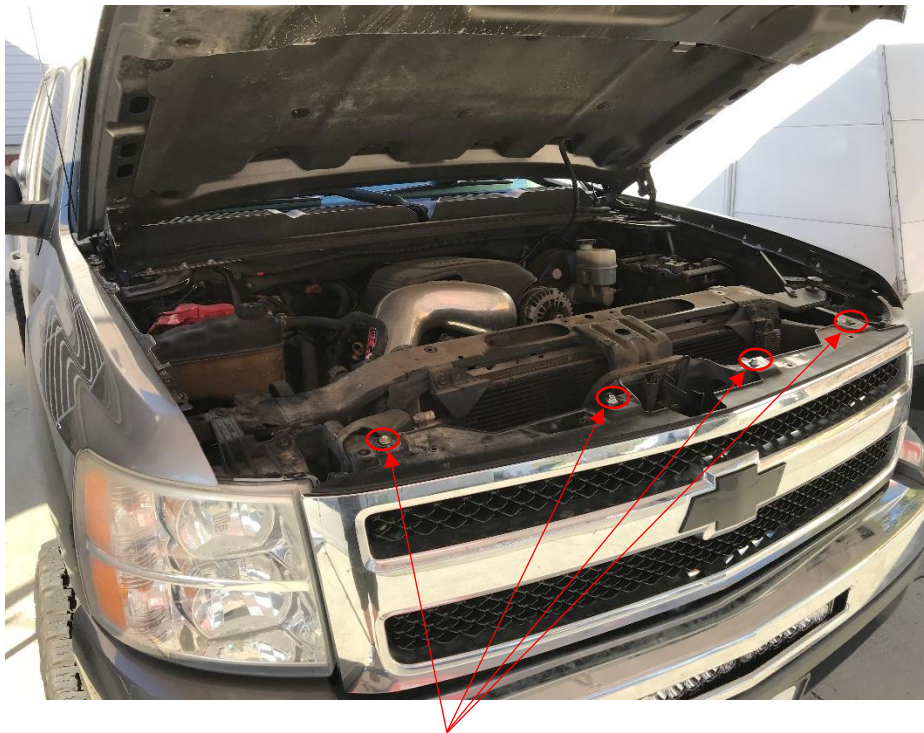
10mm Socket

Standard Screwdriver (Flat head)

2 Zip Ties, or string.

Pliers

1. Begin by opening the hood and locating the four hex head bolts along the top of the grill with the 10mm socket. Remove bolts and set aside.



10mm Hex Head
Grill bolts

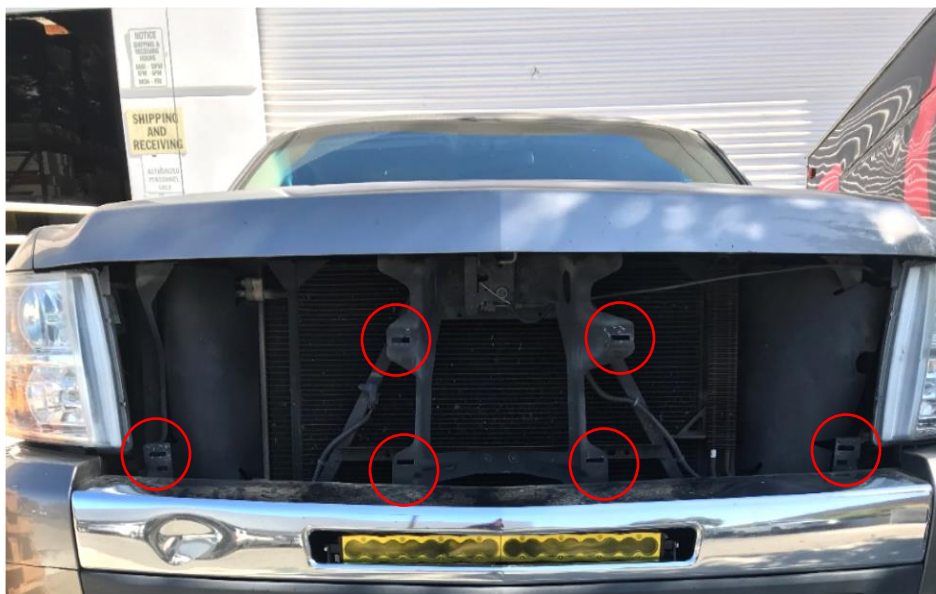


baja designs
The Scientists of Lighting

2. Release the grill clips by gently squeezing each on the top and bottom with pliers. Start either on the driver or passenger side and work your way across while gently “peeling” off the grill. The center of the top of grill must be lifted slightly to release it from the core support.



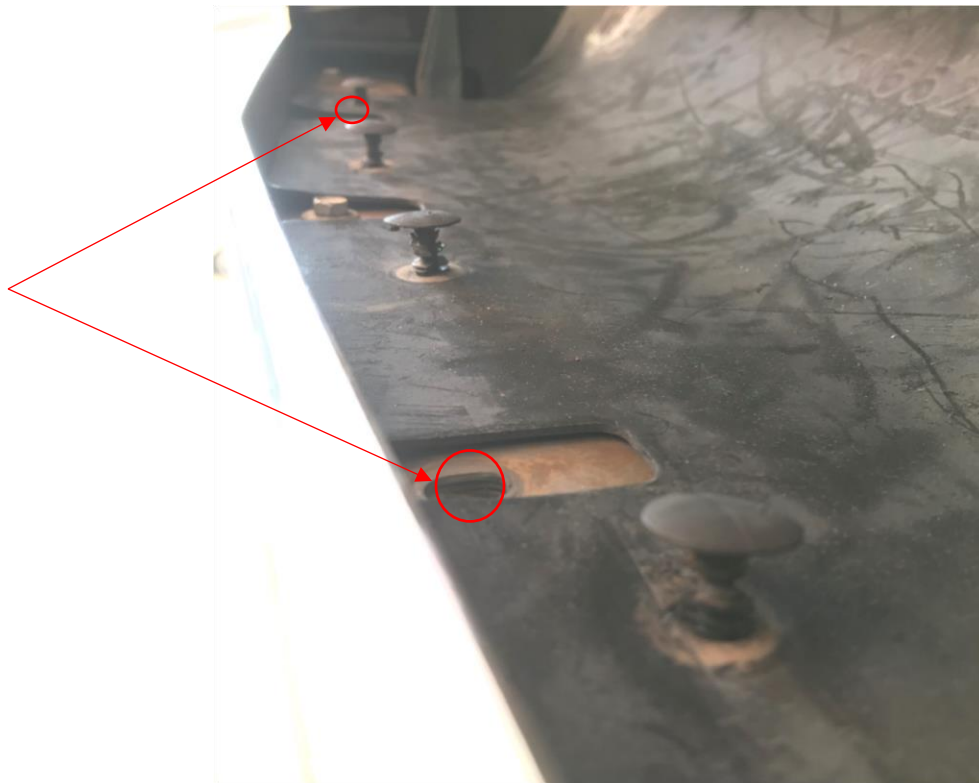
3. There are 6 clips total that will need to be removed.





baja designs
The Scientists of Lighting

4. Inside the bumper cavity where the light will be mounted, use a standard screwdriver to pry up the plastic push fasteners that hold the lower rubber radiator shrouding. Pull the pins out with pliers. Remove the two 10mm hex head bolts from the locations circled in red.



5. Push the rubber radiator shroud downward so there is clearance to insert the light bar inbetween the radiator and the mounting location inside the bumper.





baja designs
The Scientists of Lighting

6. Carefully place the light bar through the opening and tie it to the core support temporarily. It may be a good idea to have assistance, or wrap the light with a protective material (i.e. plastic wrap).



7. Re-attach the rubber radiator shrouding flap with all the plastic push fasteners except the holes that are adjacent to the bolt holes from step 4 (see image below). Place the bracket over the mounting holes. With the 1.25" long hardware provided, orient the 1/4" bolt head with a 10mm washer above the top surface of the bracket and insert it into the mounting hole. It may be necessary to have assistance when attaching the underside washers and nuts. Center the bracket before tightening.





baja designs[®]
The Scientists of Lighting

8. Now detach the light bar from the core support and align it into the mounting bracket. Using the other ¼" bolts with the small ¼" washers, hand thread the bolts through the bracket into either side of the light bar. Using a 7/16" wrench, tighten the bolts with the light at the desired angle.
9. Replace the grill by gently pressing it back into the clip fastener locations from step 3. Fasten the top of the grill with the four bolts from step 1.

Re-torque all fasteners after 100 miles.

See the instructions supplied with the wiring harness to complete wiring needs.

Your install is now complete! Thank you for choosing Baja Designs.