



baja designs[®]
The Scientists of Lighting

**Toyota Tundra 30" OnX6/S8
Grille Lightbar Kit
44-7160, 44-7161**

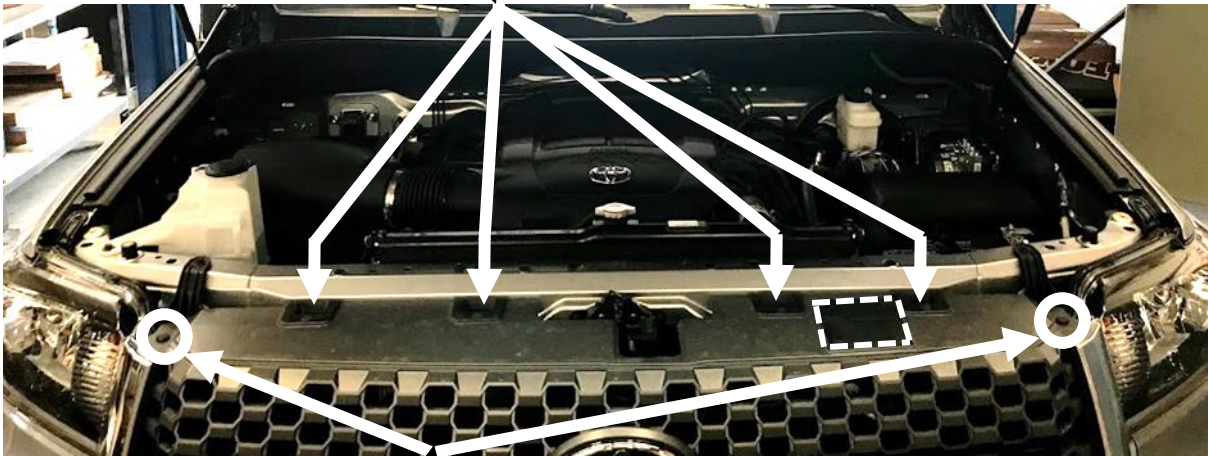


Tundra 30" OnX6 / S8 Grille Lightbar Kit

Tools Required

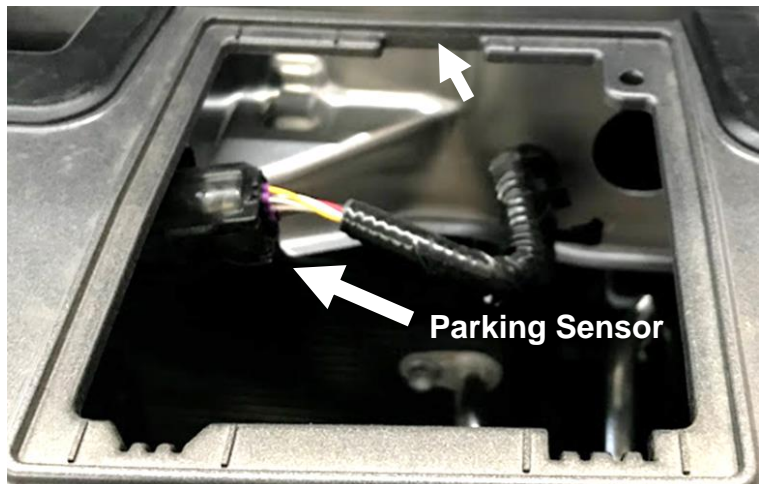
- 7/16" socket wrench
- 10mm socket wrench (1/4" drive)
- 1/4" drive extension
- 10mm wrench
- Flathead screwdriver
- 14mm socket wrench (3/8" drive min)
- Masking tape
- Zip ties

1. Ensure the vehicle is in park and disconnect the battery. Open the hood and with the 10mm socket, remove the four arrowed bolts below.



Using the Flathead screwdriver, remove the two plastic fasteners circled above. To release, pry up the head in the groove pictured on the left. Then pry the entire fastener out and set aside.

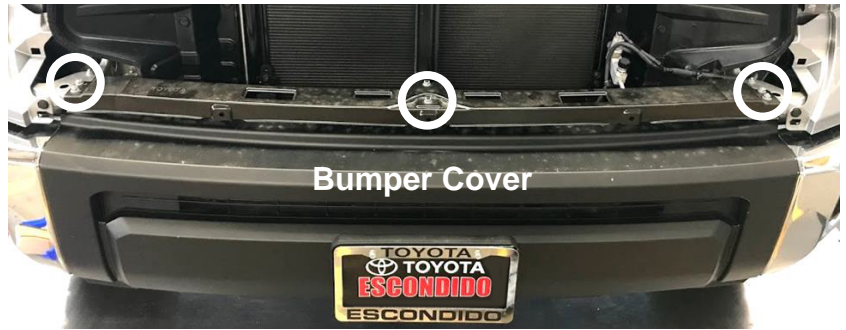
2. Remove the small panel located at the top of the grille on the driver side (see dashed box imaged under step 1). Some trim levels will not have this panel. Use the Flathead screwdriver to pry up the tab arrowed at the rear of the opening (see image on the right). Then remove the parking sensor connector by pressing the release tab while pulling toward the driver side.



3. To remove the grille, carefully pull the bottom corner with constant force until it unclips. Repeat for the other corner. Then, lift at the top of the grille to remove and place it on a soft surface.



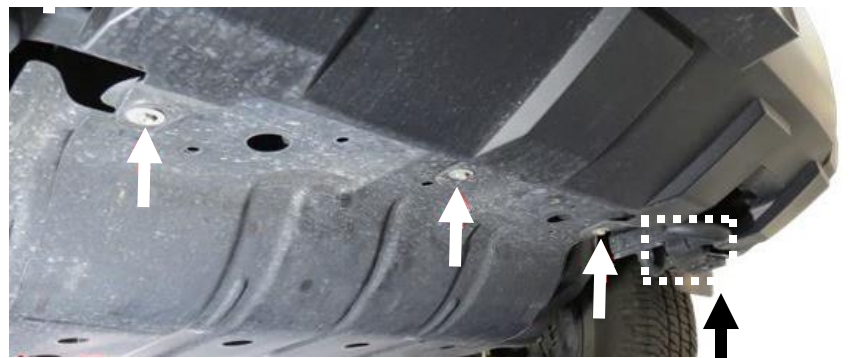
4. Use the 10mm wrench to remove six nuts circled on the right. Remove the black inner bumper brace and place aside.



5. With the 10mm socket wrench, remove six bolts arrowed below. Leave the plastic fastener in the center until step 10.



6. With the 10mm socket wrench, remove the three screws underneath the vehicle (arrowed on the right).

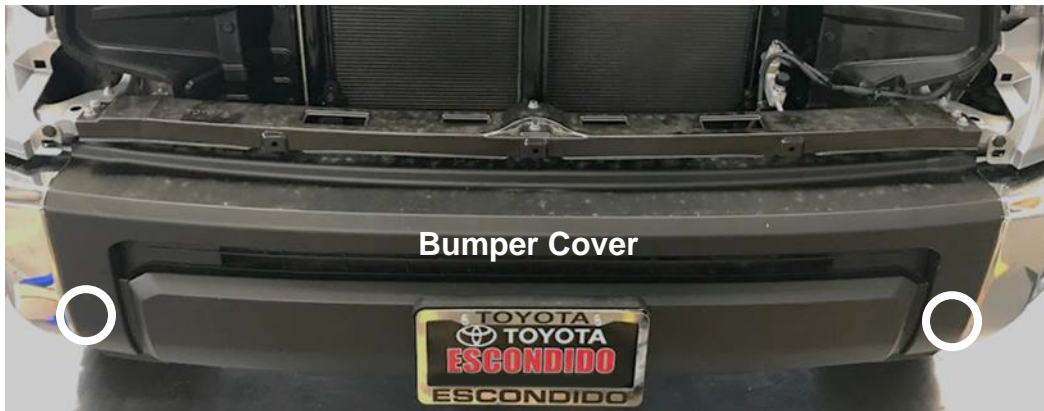


7. With the 10mm socket wrench, remove the two nuts on the bottom corners of the bumper cover (one per corner). Carefully push the bumper forward enough to free the stud (See passenger side image on right with fastener circled).

(Detail view) →

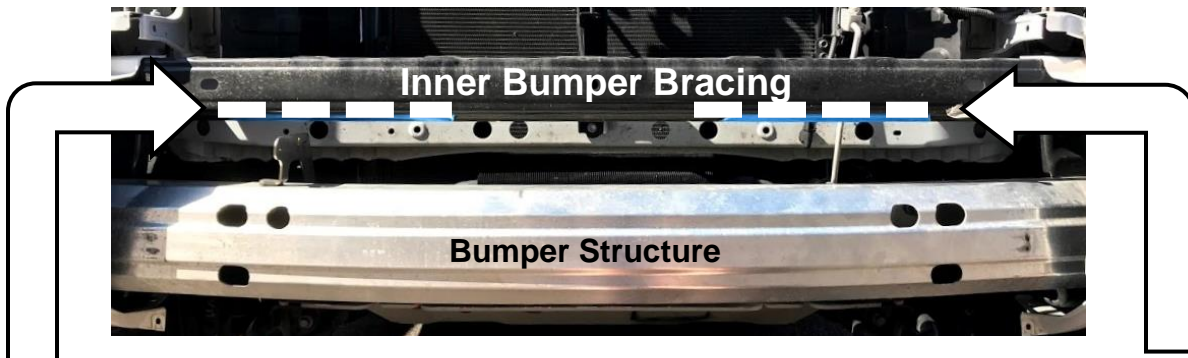


8. Patience will be required for this step.

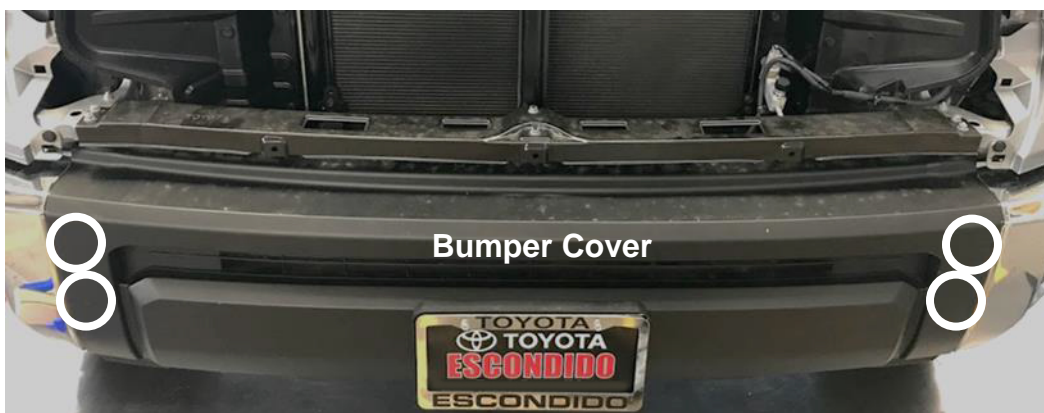


Carefully pull down the bottom edge of the bumper cover so you can access behind the circled fasteners shown above. With the 10mm wrench, reach into the back of the bumper near the bottom left or right and carefully loosen the nut. It should easily come off by hand after breaking loose with the wrench. Repeat for the opposite side. (Passenger side nut arrowed in image next to step 7)

9. **Caution:** Masking tape must be used to avoid cutting hands and arms.
(**The front-end image below has the bumper cover removed to show detail**)

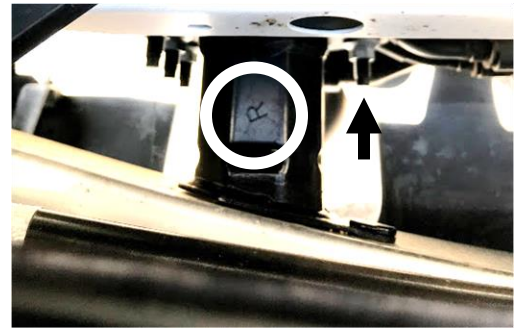


Mask off the bottom edge of the inner bumper bracing. Carefully reach behind the bumper cover in between inner bumper bracing and bumper structure to reach the four fasteners with the 10mm socket wrench (circled below). Reposition if needed. Break the nuts loose and finish the removal by hand.

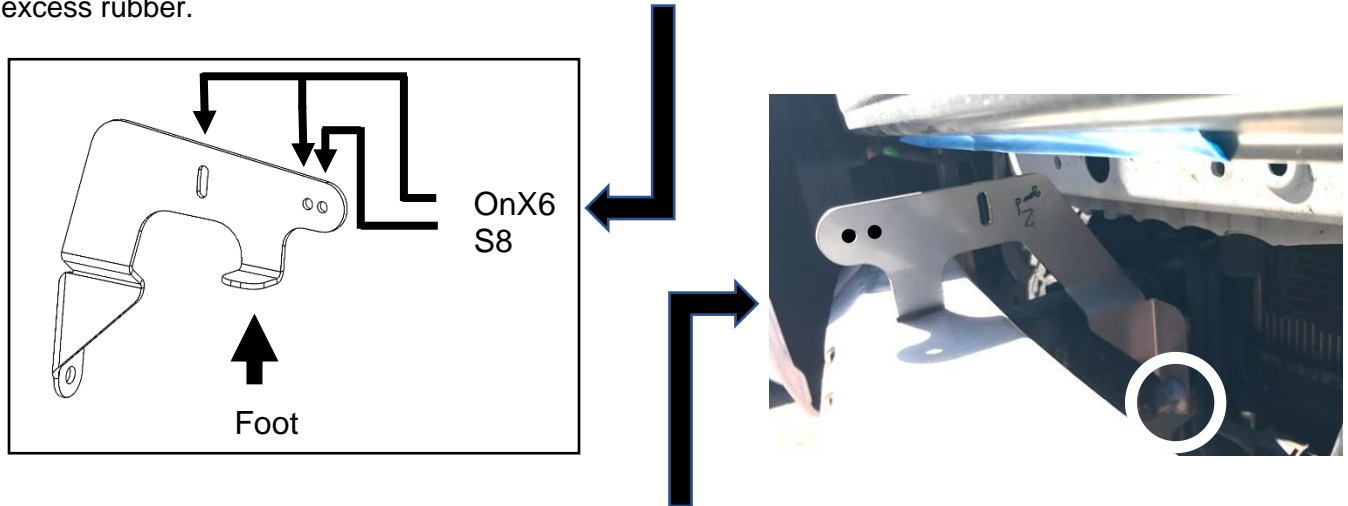


10. With the Flathead screwdriver, pry up the plastic fastener on the center of the bumper cover and remove. Now the bumper can be lifted and removed. Place the cover on a soft surface.

11. Locate the frame rails that are labelled with either R or L. The right-side frame rail is shown below with the label circled (Right = passenger side). The inner sides of the horns have a single nut (arrowed in image on the right). Remove the nuts for both right and left with the 14mm socket wrench.



12. Locate the brackets and rubber pads included with the kit. Remove adhesive film and place the pads on the bottom foot of each bracket. See the "PS" (Passenger Side) bracket below for reference. Trim any excess rubber.



13. Take the bracket labeled "PS" and place it over the single stud circled above on the right. Repeat on opposite side with the "DS" bracket. Thread each nut onto the studs until hand tight.

14. Now, the lightbar can be mounted. Reference the image under step 12 to determine which mounting holes to use for S8 or OnX6. Using the included 7/16" hex head bolts and washers, hand tighten the bolts through the brackets and into the light.

15. Unravel wiring harness. Before reassembling the front end, route the lightbar plug of the harness from the battery inside the engine compartment to the passenger side of the light as shown below.



16. Attach the battery eyelet leads to the battery with the red wire to positive (+) and black wire to negative (-).



17. Label all switch terminals and their locations. Remove terminals from switches. Locate the driver side wiring passthrough grommet (see image below). Cut through the nipple at the bottom of the grommet. Use Vaseline, or lubricant to help pass the wires through. Pull the necessary length through the grommet to reach the dash mounting location. Reattach the terminals and mount the switch. Tie all wires away from any hot and/or rotating components.

18. Aim the light and then tighten the 7/16" head bolts. Tighten the 14mm bracket mounting bolts from step 13.

19. The driver side radiator shroud will need to be taken out temporarily to reach the inner bumper cover nuts. Use the flathead screwdriver to pry up and remove the six plastic fasteners. Unclip the wiring tie arrowed in the image.



20. Place the bumper cover back onto the vehicle and install the top center plastic fastener. Use the 10mm wrench to replace the two nuts from step 8. Replace the radiator shroud and wiring clip from step 19. Then use the 10mm socket to replace the nuts from step 7 and bolts from steps 6-4.
21. Mount the grille and hold it in place with two plastic fasteners on the top left and right edge. Use the 10mm socket wrench to replace the four bolts at the top of the grille. Plug in the parking sensor from step 2 and replace the cover. Reconnect the battery.

Re-torque all the fasteners after 100 miles.

Your install is now complete! Thank you for choosing Baja Designs.