

BAER® *Your Complete Performance Brake Supplier!*



Installation Instructions

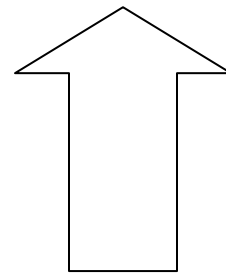
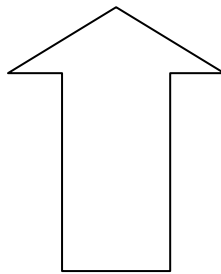
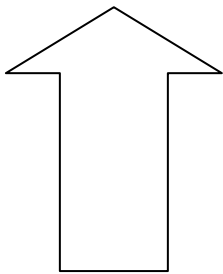
Product: Pro+ Front, T4 Front

Instruction Part Number: 6000390

Vehicle

Make: GM
Model: Corvette
Year(s): 84

***ATTENTION: Read this before going any farther!
Returns will not be accepted for ANY installed PART or
ASSEMBLY. Use great care to prevent cosmetic damage
when performing wheel fit check.***



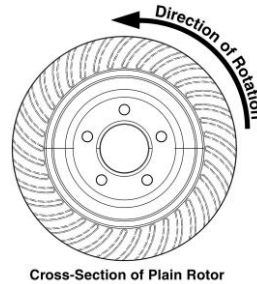
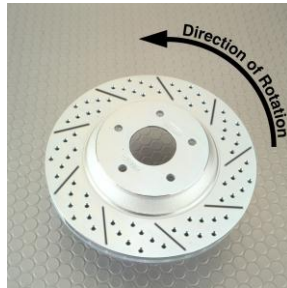
Notices – Read and Follow BEFORE ATTEMPTING INSTALLATION

- All installations require proper safety procedures and protective eyewear.
- All installations assume basic mechanical skill and a factory service manual for the vehicle on which the installation is to be performed.
- All references to LEFT side of vehicle always refer to the Driver's side of the vehicle.
- Any installation requiring you to remove a wheel or gain access under the vehicle requires use of jack stands appropriate to the weight of the vehicle. In all cases Baer recommends jack stands rated for at least 2-tons.
- A selection of hand tools sufficient to engage in the installation of these products is assumed and is the responsibility of the installer to have in his/her possession prior to beginning this installation. All installations, which require removal of hydraulic hoses and/or bleeding of the brakes, require appropriate fitting/line wrenches, as well as a safety catch can and protective eyewear. Other than these items, if unique or special tools are required they are listed in the section for that step.
- ALWAYS CONFIRM WHEEL FIT PRIOR TO BEGINNING INSTALLATION OF ANY BRAKE SYSTEM OR "UPSIZED" ROTOR UPGRADE! In addition to checking wheel fitment, always place the actual corner assembly or a combination of the caliper assembly onto the rotor, and into the actual wheel. This procedure will reconfirm proper clearance between the caliper and the wheel before proceeding with the actual installation.
- Returns will **not** be accepted for systems that have been partially or completely installed. Use extreme care when checking wheel fitment to prevent any cosmetic damage.

BAER Your Complete Performance Brake Supplier!



- When installing rotors be sure to follow the direction of rotation indicated on the rotor hat area with either an arrow, or an “L” for left, or an “R” for right, or both. “L” or left always indicates the driver’s side of US spec vehicles. Images shown are “L” left rotors:

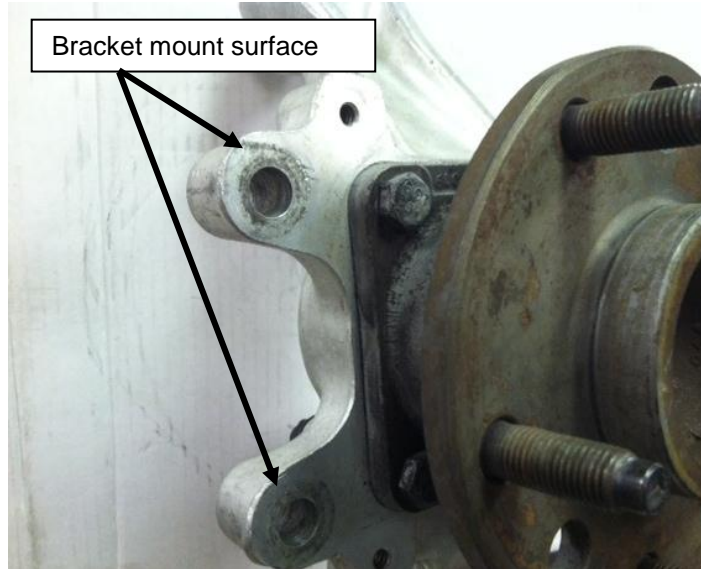


- A proper professional wheel alignment is required for any system requiring replacement of the front spindles, or tie rod ends. Follow factory prescribed procedures and specifications unless otherwise indicated.
- At all times stop the installation if anything is unclear, or the parts require force to install. Consult directly with Baer Technical Staff in such instances to confirm details. Please have these instructions, as well as the part number machined on the component that is proving difficult to install, as well as the make, model, and year (date of vehicle production is preferred) of your vehicle available when you call.

BAER Your Complete Performance Brake Supplier!

INSTALLATION:

1. Remove the OE caliper with the hose to the frame and cap with the supplied vinyl cap. Next, remove the OE rotor. Thoroughly clean the hub and bracket mount surface to ensure proper seating of the new components.



2. Separate the base bracket from the Baer caliper (this is installed for shipping purposes).
3. Install the base bracket on the inboard side of the spindle mount using the supplied M12-1.75x40 VT (red thread coating) bolts, and washers. Torque bolts to 85 ft-lbs. See photos below for reference:



Front view (Pro+ bracket shown)



Rear view (Pro+ bracket shown)

BAER Your Complete Performance Brake Supplier!

4. Install the correct side rotor and secure it with three lug nuts and washers to prevent scratching the hat.
5. **6P System:** With pads in place, install the correct side caliper (bleeder screws pointed up) onto the base bracket using the supplied M12-1.75x45 SHCS VT bolts. Torque these bolts to 85 ft-lbs.

T4, 6S System: With pads in place, slide the correct side caliper (bleeder screws pointed up) over the base bracket studs. Install the allen bolts and torque to 85 ft-lbs.

6. Install the steel braid hose with one copper washer on each side of the banjo fitting. Finger tighten the banjo bolt. Connect the hose to the hardline and install the hose lock.
****IMPORTANT: Position the hose to avoid interference with the wheel and suspension components.** Tighten the fitting and banjo bolt to 15-20 ft-lbs.
7. Repeat these steps for the other side and recheck all attachment points and fittings.

Refer to Bleeding and Rotor Seasoning procedures contained on a separate sheet.

For service components and replacement parts contact your Baer Brake Systems Tech Representative.