



INSTALLATION GUIDE

2012+ Porsche 991 Performance Exhaust

Congratulations on your purchase of the AWE Tuning Performance Exhaust for the 2012+ Porsche 991 Carrera 2 and 4.

Exquisite build quality with industry leading performance distinguishes this exhaust system upgrade from all others.

Exhaust Parts

- 1 main exhaust section (part PU)
- 2 side muffler inlet adapter (part PT)
- 2 63.5mm Accu-Seal clamp
- 2 3.12" high temp t-bolt clamp
- 2 mount support shim
- 2 exhaust gasket
- 6 M8 copper lock nut
- 6 M8 washer

Optional tips:

- 1 driver side tip (optional color)
- 1 passenger side tip (optional color)
- 2 2.62" t-bolt clamp
- 2 tip inlet shim

Step 1

Remove factory center muffler:

Remove exhaust tips.

Remove bumper cover.

Remove nuts fastening center muffler to catalytic converters (3 per side).

Loosen sleeve clamps and slide them outwards onto side muffler inlet tube.

Slide side muffler brackets off catalytic converter studs and push each side muffler into its respective fender well.

Remove center muffler mounting straps.

Pull center muffler rearward to free from catalytic converter studs and remove from car.

Step 2

Install AWE Tuning exhaust:

Preassemble driver side and passenger side muffler inlet adapters onto the main exhaust section using the enclosed 63.5mm Accu-Seal clamps. **Rotate the clamps so that they can be fully tightened down once the bumper is reinstalled.** Do not fully tighten the clamps at this time.

Install supplied new exhaust gaskets onto catalytic converter studs.

Align both flanges of the main exhaust section with the catalytic converter studs on both sides and seat the exhaust onto the studs. Take care, it is a tight fit.

Pull the factory side mufflers and brackets back into place on the catalytic converter studs. Note that each flange has provisions for the collars on the muffler bracket to seat into. Install the supplied copper lock nuts and washers then tighten the exhaust to the catalytic converters.

Slide the sleeve clamps between the side mufflers and the AWE Tuning exhaust into place. **Rotate the sleeve clamps so that they can be fully tightened down once the bumper is reinstalled.** Do not fully tighten them at this time.

Loosely install the exhaust tips, and adjust to allow the tips to sit level and properly spaced.

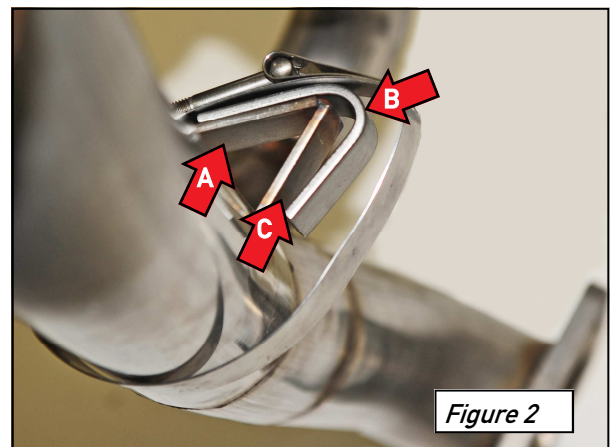
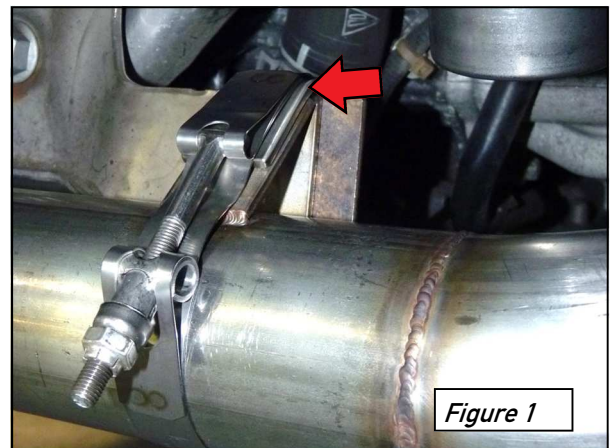
Test fit the bumper at this time, and adjust alignment and rotation of sections as necessary. Once properly lined up with the bumper, fully tighten down the sleeve clamps and Accu-Seal band clamps.

Step 3

On each side, place a supplied V-shaped support shim over top of the factory exhaust mounting plate, as shown at arrow in **Figure 1**. The support shim overlaps the sloping face of the bracket on the AWE Tuning exhaust and the back face of the factory exhaust mounting plate, both driver and passenger sides.

Remove the nut from each supplied t-bolt clamp and slip a clamp around each bracket/plate/shim assembly as shown in **Figure 1**. Reinstall the nuts and tighten down the clamps.

Figure 2 shows an alternate view of this assembly with the exhaust off the car. Exhaust bracket is at **Arrow A**, shim is at **Arrow B**, and the factory mounting plate would insert in the gap between them at **Arrow C**.



Step 4

Complete re-assembly in reverse order of disassembly.

If the optional AWE Tuning tips were purchased, insert a shim between each tip inlet its corresponding exhaust tailpipe. Each tip should fit on each tailpipe very snugly with the shim properly in place.

Apply a dab of anti-seize paste to the threads of the supplied t-bolt clamps and use them to fasten the tips onto the tailpipes. Set proper depth on each side, rotate the t-bolt clamps so their threaded studs are not visible from the rear of the car, and then fully tighten.

ENJOY