

Installation Instructions



AUTO VENT SHADE™

Ventvisor® Deflector

Important Safety Information



- CAUTION - Before driving, ensure that the vent visors are properly secured to vehicle.
- Do not use automatic “brush-style” car washes.
- Do not use cleaning solvents of any kind.
- Periodically check all components for tightness.
- When using Surface Prep, avoid contact with skin. Use in well ventilated area. If contact is made with material, flush area with large amounts of water. If irritation persists, get immediate medical attention. USE PREP ON RUBBER ONLY

Contents - 2 Piece Set



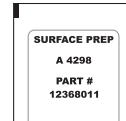
Front Driver Visor



Front Passenger Visor



Alcohol Pad x2



Surface Prep Pad x2



Flange Clip x2

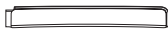
Contents - 4 Piece Set



Front Driver Visor



Front Passenger Visor



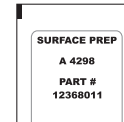
Rear Driver's Visor



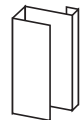
Rear Passenger's Visor



Alcohol Pad x4



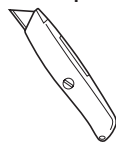
Surface Prep Pad x2



Flange Clip x4

Tools Required

Some parts require trimming excess tape along the window trim, see **steps 11-12**.



Utility Knife



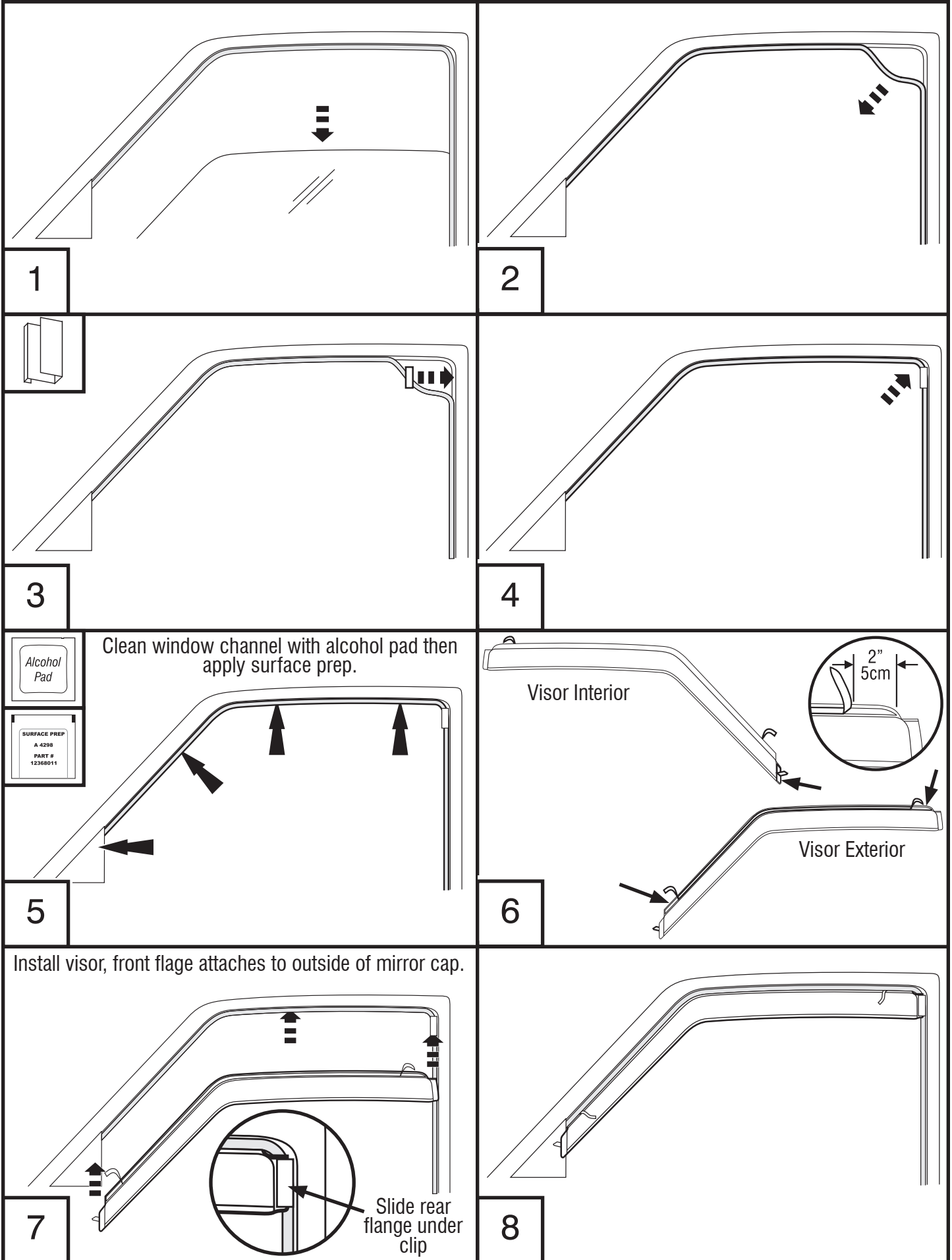
Safety Gloves

Preparation Before Painting / Installation

- Please review your warranty card **BEFORE** installation of this product.
- A trial fit is recommended to ensure proper positioning and fit.
- Check fit of parts before painting as we will not accept the return of modified or painted parts.
- Wash and dry your vehicle to remove any debris and/or dirt from the installation area.

Front Visor Installation Steps

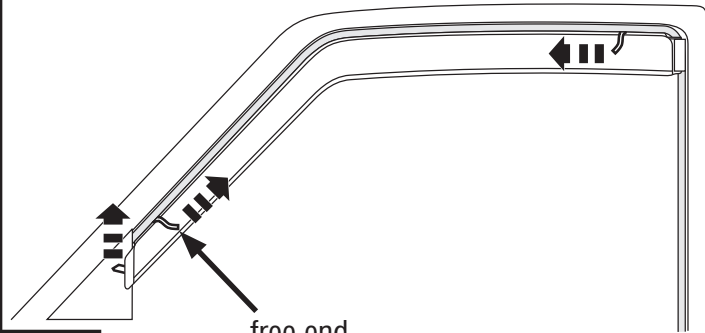
NOTE: Actual application may vary slightly from illustrations.



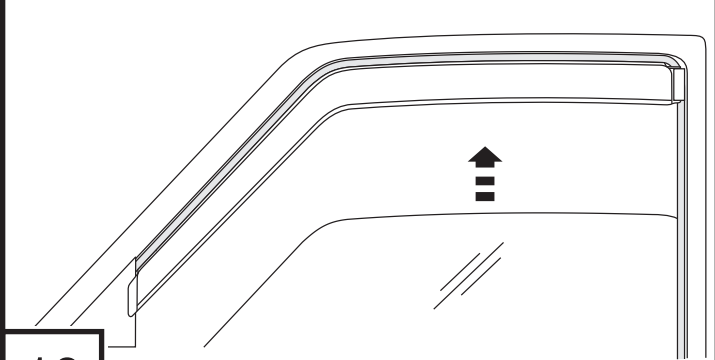
Front Visor Installation Steps

NOTE: Actual application may vary slightly from illustrations.

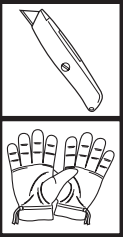
Raise window and leave up 24 hours to secure.



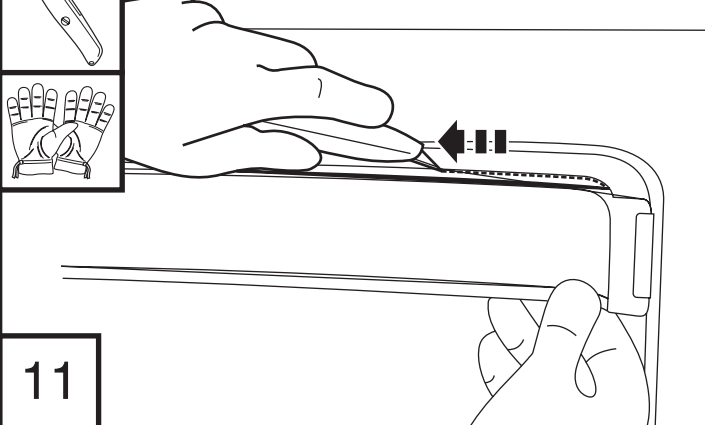
9



10

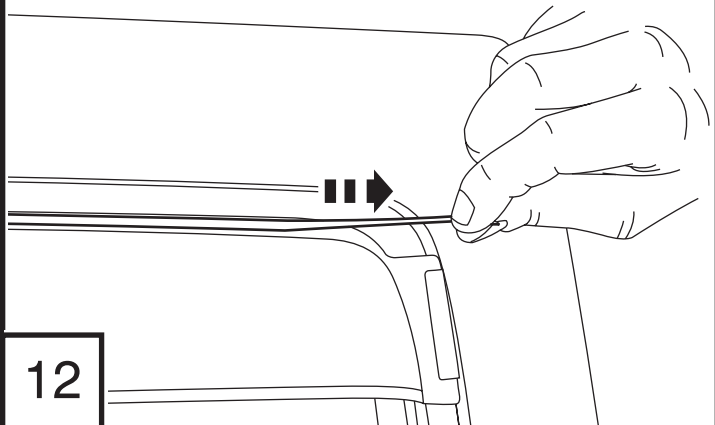


If necessary, cut excess tape along window trim



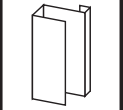
11

Remove trimmed tape by stretching.

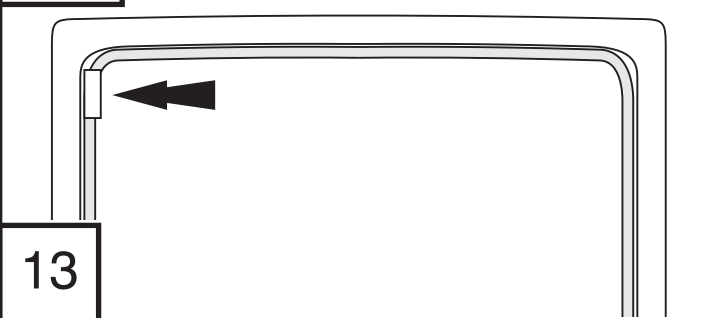


12

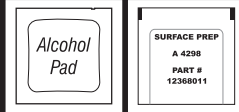
Rear Visor Installation Steps - Optional



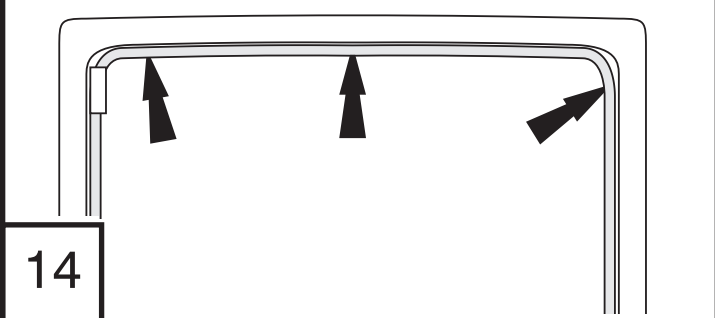
Use installation method from **Steps 1-4** to add clip to the front of the rear window frame.



13

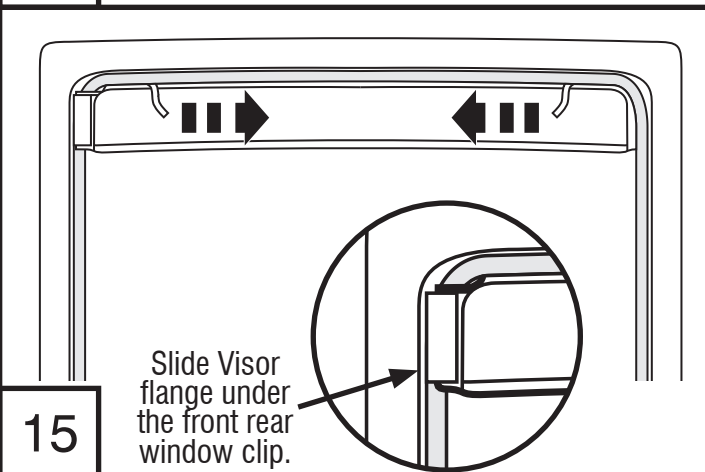


Clean window channel with alcohol pad then apply surface prep.



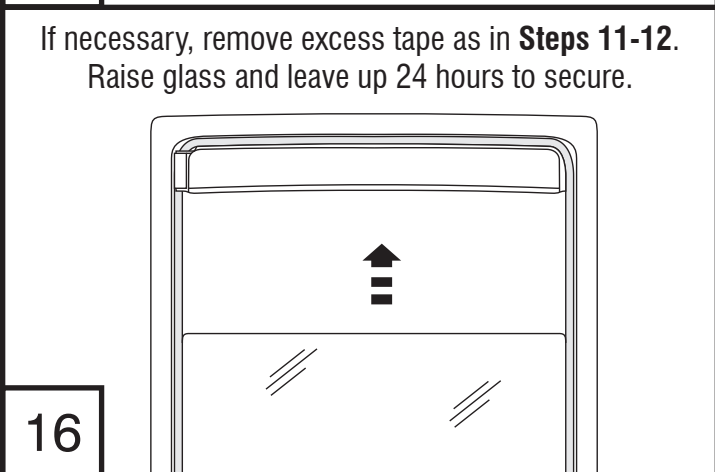
14

If necessary, remove excess tape as in **Steps 11-12**.
Raise glass and leave up 24 hours to secure.



15

Slide Visor flange under the front rear window clip.



16

Care and Cleaning

- Wash only with mild soap & dry with a clean cloth.

Congratulations!

You have purchased one of the many quality Auto Ventshade™ branded products offered by Lund International, Inc. We take the utmost pride in our products and want you to enjoy years of satisfaction from your investment. We have made every effort to ensure that your product is top quality in terms of fit, durability, finish and ease of installation.

