

# Installation Instructions



AUTO VENTSHADE™

## Ventshade® Deflector

### Important Safety Information



- CAUTION - Before driving, ensure that the vent visor is properly secured to vehicle.
- Do not use automatic "brush-style" car washes.
- Do not use cleaning solvents of any kind.
- Periodically check all components for tightness.

### Contents - 2 Piece Set



Front Driver Side Visor



Front Passenger Side Visor



Clips x8

### Contents - 4 Piece Set



Front Driver Side Visor



Front Passenger Side Visor



Rear Driver's Visor  
Rear Passenger's Visor



Clips x14

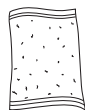


Screws x2

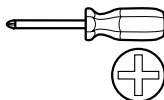
### Tools Required



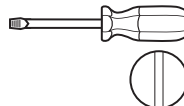
Car Wash Supplies



Clean Towel



Phillips Screwdriver



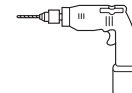
Flathead Screwdriver



Putty Knife



Punch



Drill

### Preparation Before Painting / Installation

- A trial fit is recommended to ensure proper positioning and fit.
- Check fit of parts before painting as we will not accept the return of modified or painted parts.
- Wash and dry your vehicle to remove any debris and/or dirt from the installation area.

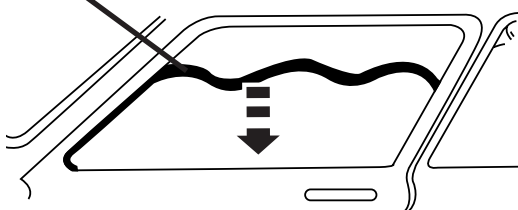
### Installation Steps

**NOTE:** Actual application may vary slightly from illustrations.



Lower window. Use a putty knife to grasp and pull down the rubber window channel.

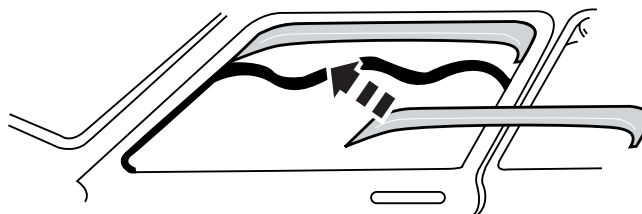
rubber window channel



1

### Without Vent Post

Locate deflector in upper window frame and place in position as shown.

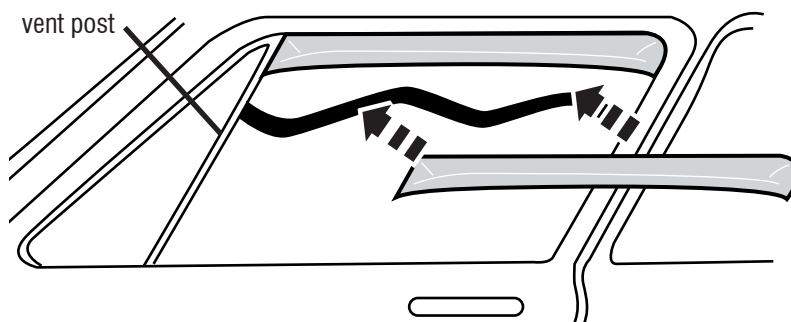


2

# Installation Steps With Vent Post

**NOTE:** Actual application may vary slightly from illustrations.

Insert end flange between the weather strip and the vent post and push the deflector up into position.

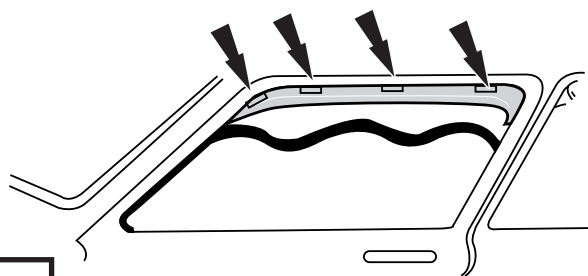


3

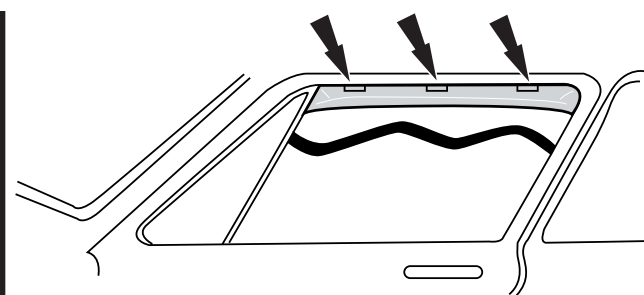


Place the clips as shown.

**NOTE:** 4 door car fronts with a vent post use (3) clips, 4-door car fronts without a vent post use (4) clips, 2-door cars use (4) clips.

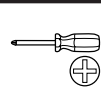


without vent post

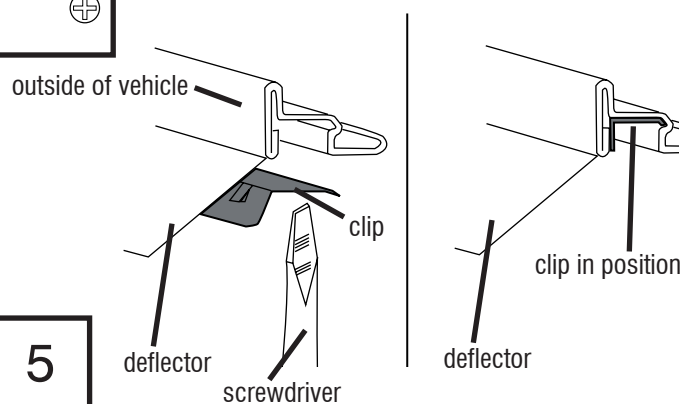


with vent post

4

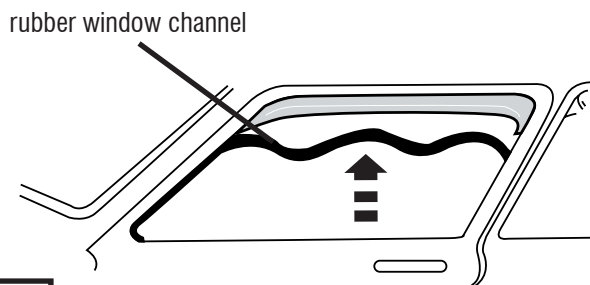


Use a screwdriver to push the clip up into position.



5

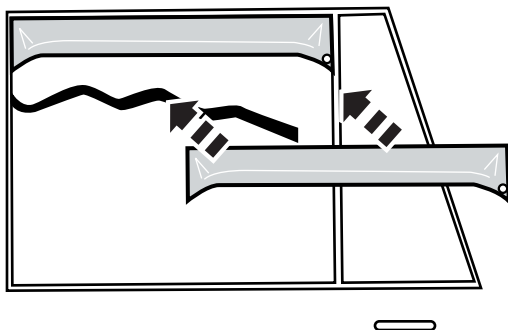
Replace rubber window channel and raise window to fully seat window channel.



6

## Rear door installation

Lower window, pull down window channel, and position deflector in the upper window frame and division post.

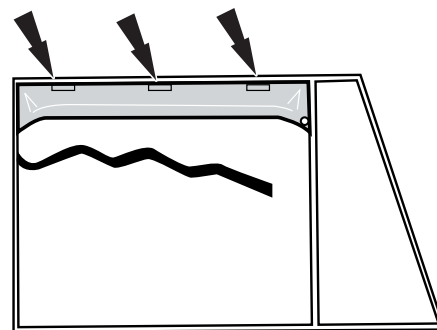


7



Place clips as shown. Install as per **Step 5** above.

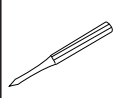
**NOTE:** All 4-door cars rears use (3) clips.



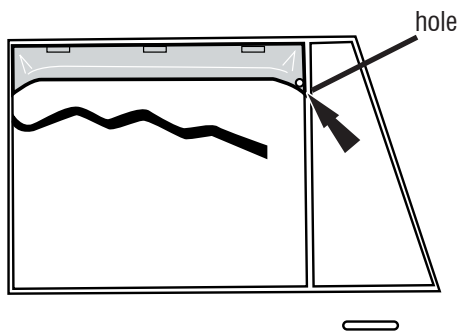
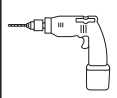
8

## Installation Steps

**NOTE:** Actual application may vary slightly from illustrations.



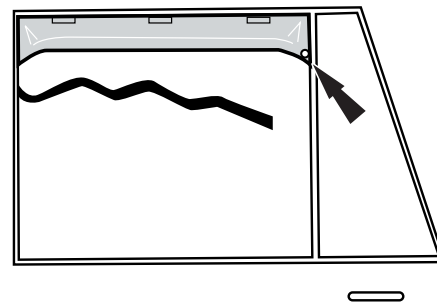
Pull the shield flush against the vertical post. Using the hole in the deflector as a guide, centerpunch and drill a 1/16" hole.



9



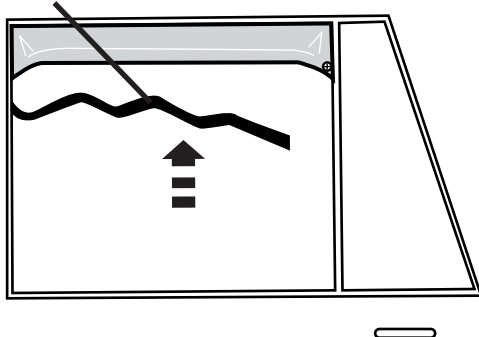
Insert (1) screw.



10

Replace rubber window channel and raise window to fully seat window channel.

rubber window channel



11

Repeat **Steps 1-11** for remaining windows

## Care and Cleaning

- Wash only with mild soap & dry with a clean cloth.

## Congratulations!

You have purchased one of the many quality Auto Ventshade™ branded products offered by Lund International, Inc. We take the utmost pride in our products and want you to enjoy years of satisfaction from your investment. We have made every effort to ensure that your product is top quality in terms of fit, durability, finish and ease of installation.



When it comes to quality rain guards and wind deflectors, AVS is the brand you can depend on.