

Installation Instructions



Ventvisor® Deflector

Important Safety Information



- CAUTION - Before driving, ensure that the vent visor is properly secured to vehicle.
- Do not use automatic "brush-style" car washes.
- Do not use cleaning solvents of any kind.
- Periodically check all components for tightness.

Contents - 2 Piece Set **NOTE:** Actual product may vary from illustration.



Front Driver Side Visor



Front Passenger Side Visor



Alcohol Pad x2

Contents - 4 Piece Set



Front Driver Side Visor



Front Passenger Side Visor



Rear Driver Side Visor



Rear Passenger Side Visor



Alcohol Pad x4

Tools Required



Car Wash Supplies



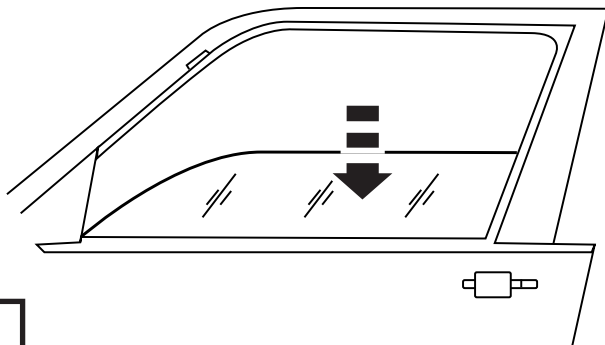
Clean Towel

Preparation Before Painting / Installation

- A trial fit is recommended to ensure proper positioning and fit.
- Check fit of parts before painting as we will not accept the return of modified or painted parts.
- Wash and dry your vehicle to remove any debris and/or dirt from the installation area.

Installation Steps **NOTE:** Actual application may vary slightly from illustrations.

Completely lower drivers side window.



1



Clean the **INSIDE** of the rubber window channel with an alcohol pad.

rubber window channel

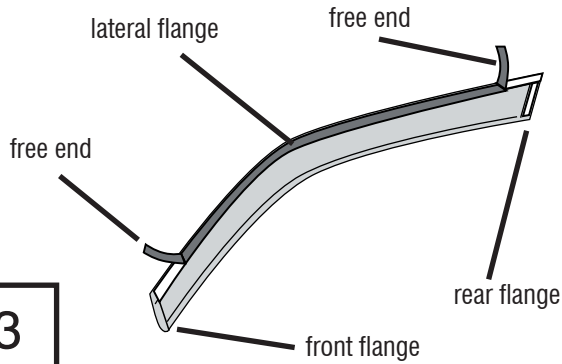


2

Installation Steps

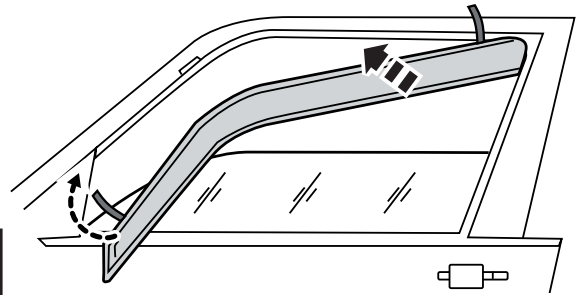
NOTE: Actual application may vary slightly from illustrations.

Remove the tape liner from the rear flange of the visor. Then peel back 2" (5 cm) of tape liner from each end lateral flange.



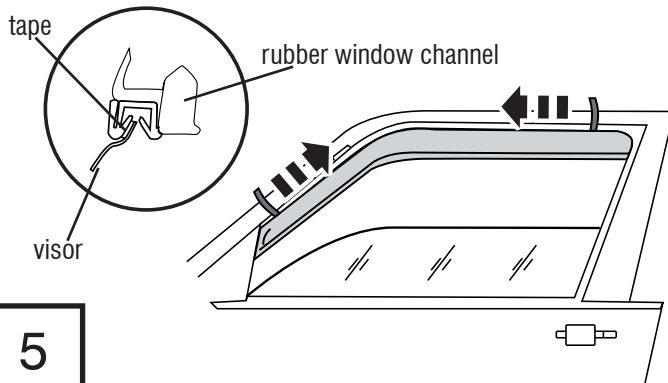
3

Insert the drivers side rear end flange into the rubber window channel first. Flex the visor slightly and rotate the visor into position inside the rubber window channel. Ensure that the tape liner free ends are accessible.



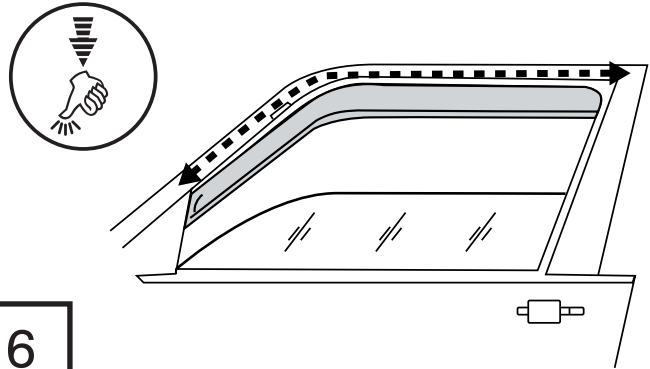
4

With the visor in its final position, remove remaining tape liner by pulling on free ends.



5

Apply pressure to flange edges to ensure proper adhesion of tape.

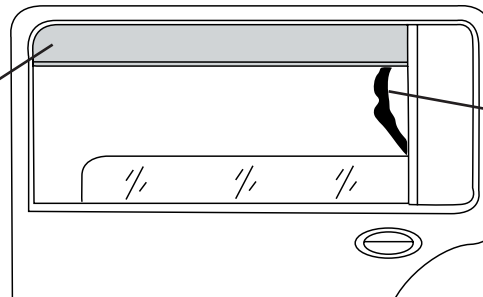


6

4 Piece Set

To install the drivers side rear visor, pull the rubber window channel out of the ventpost. The rear end flange of the visor will install between the ventpost and the rubber window channel. The front end flange and the lateral flange will install inside the rubber window channel.

Drivers side rear visor in position.



Rubber window channel

7

Repeat **Steps 1-7** for opposite side.

Care and Cleaning

- Wash only with mild soap & dry with a clean cloth.

Congratulations!

You have purchased one of the many quality Auto Ventshade™ branded products offered by Lund International, Inc. We take the utmost pride in our products and want you to enjoy years of satisfaction from your investment. We have made every effort to ensure that your product is top quality in terms of fit, durability, finish and ease of installation.



When it comes to quality rain guards and wind deflectors, AVS is the brand you can depend on.