

Installation Instruction

LUND®

Interceptor™

For proper installation and best possible fit, please read all instructions **BEFORE** you begin.

Important Safety Information



CAUTION
PRECAUCIÓN
ATTENTION

- To avoid risk of personal injury or property damage:
- Wear safety glasses while installing the Hood Shield.
- Do not use automatic “brush-style” car washes.
- Do not pull on shield to close hood.
- Routinely check security of fasteners.
- Check clearances on vehicle.
- Use caution when working with the drill or the punch.

Contents



Hood Shield

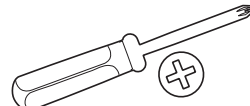


Washer Head Screw

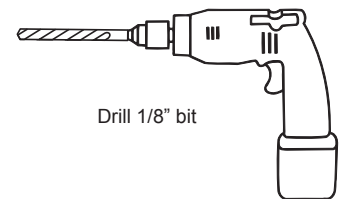
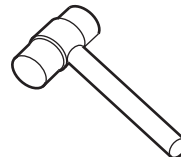
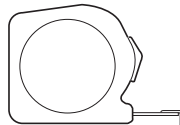
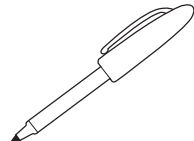
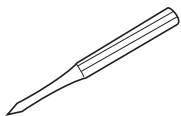


Rubber Grommet

Tools Required



#2 Phillips Screw Driver

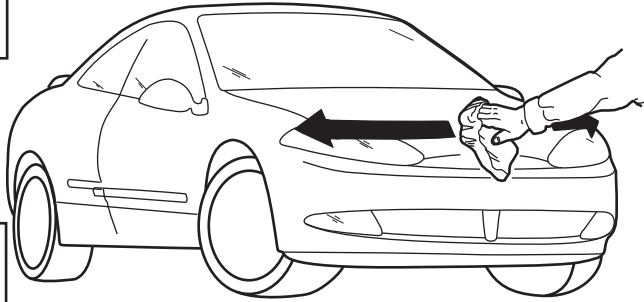


Drill 1/8" bit

Preparation Before Painting / Installation

Please check fit of parts before painting as we will not accept the return of modified or painted parts. We will not assume any responsibility for parts painted in error.

Installation Steps



1

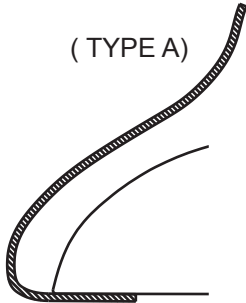


2

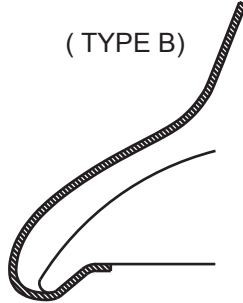


Determine your hood type.

(TYPE A)



(TYPE B)

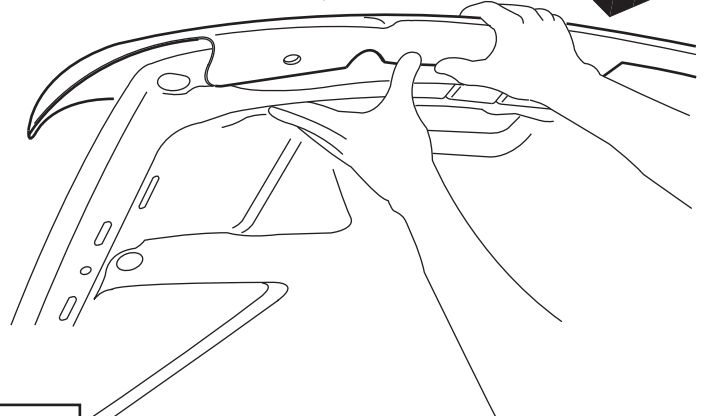


1 1/8"

3

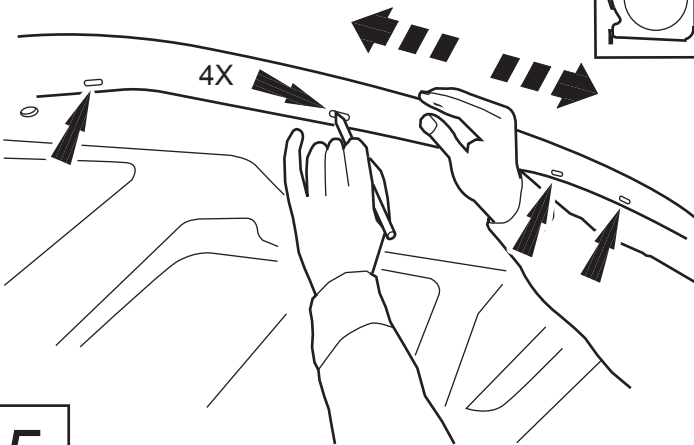
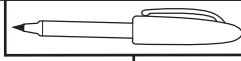


WARNING



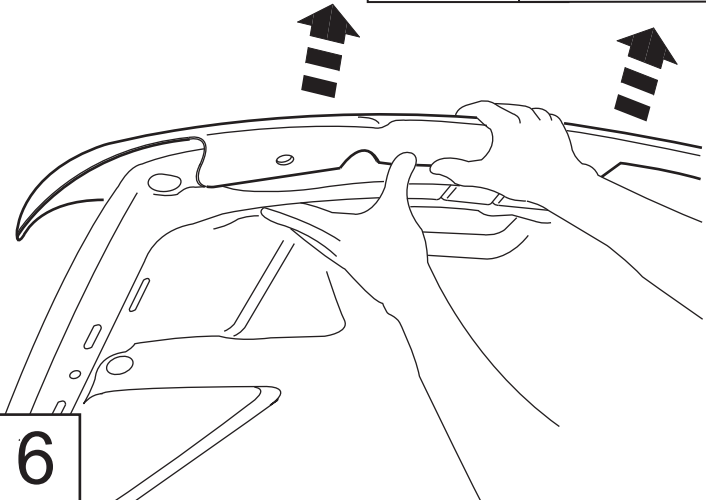
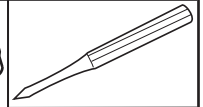
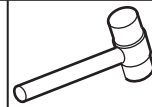
4

NOTE:
CENTER SHIELD ON HOOD

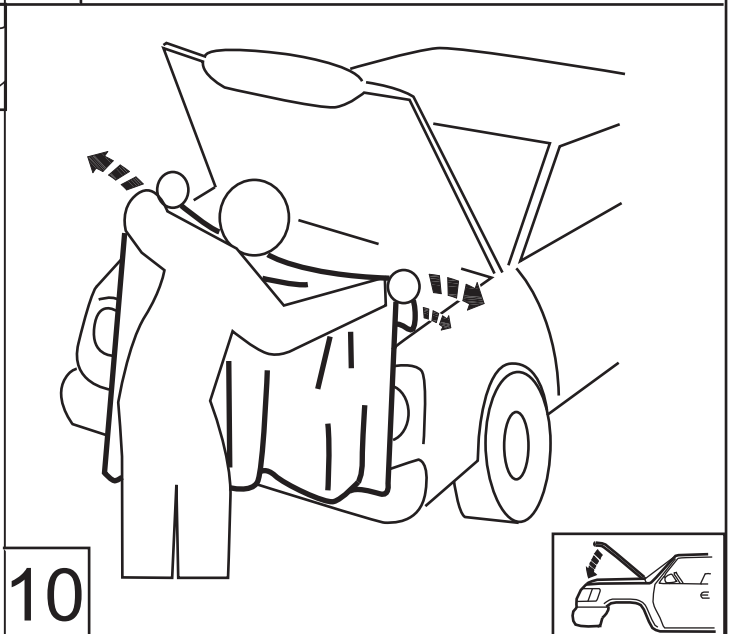
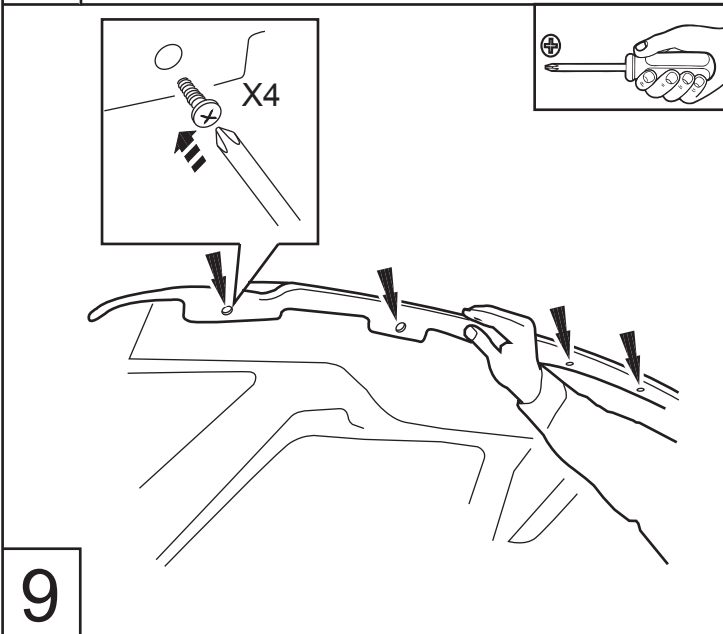
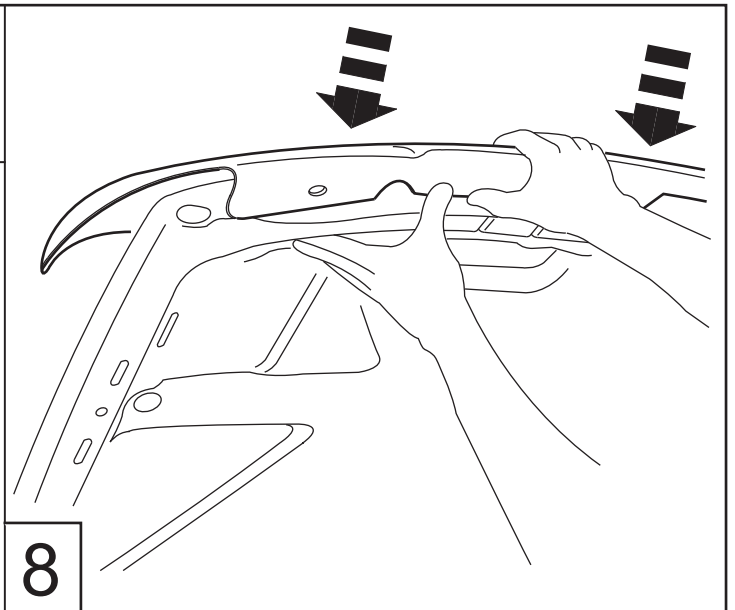
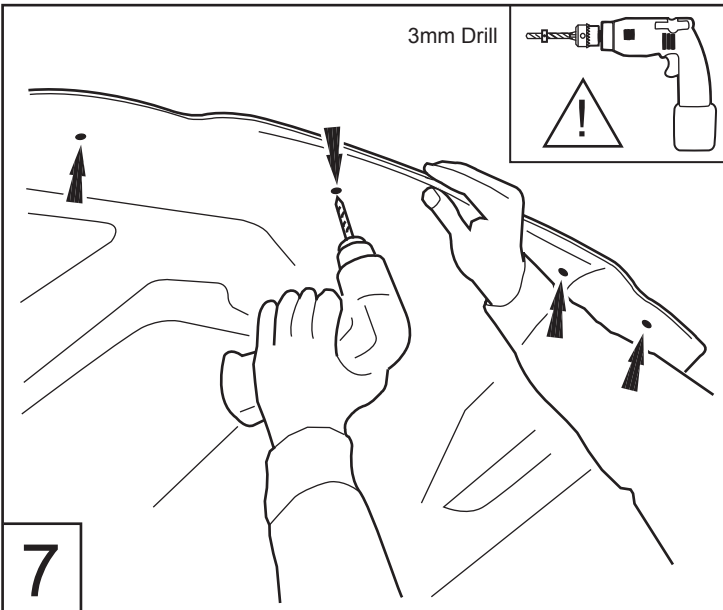


5

NOTE:
Remove shield from hood



6



Care and Cleaning

- Do not use cleaning solvents of any kind.
- Wash only with mild soap & dry with a clean cloth.

Congratulations!

You have purchased one of many Lund® branded quality parts offered by Lund International, Inc. We take the utmost pride in our products and want you to enjoy years of satisfaction from your investment. We have made every effort to ensure that your product is top quality in terms of fit, durability, finish and ease of installation.

LUND®