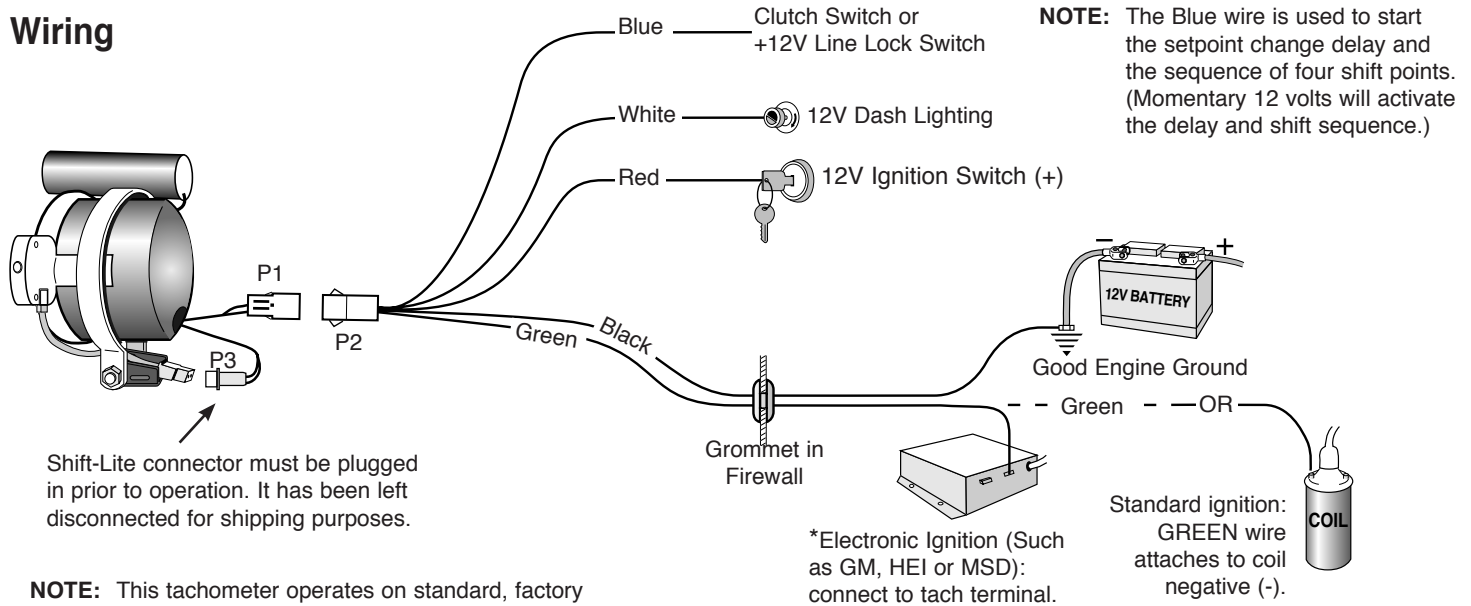


Wiring



WARNING

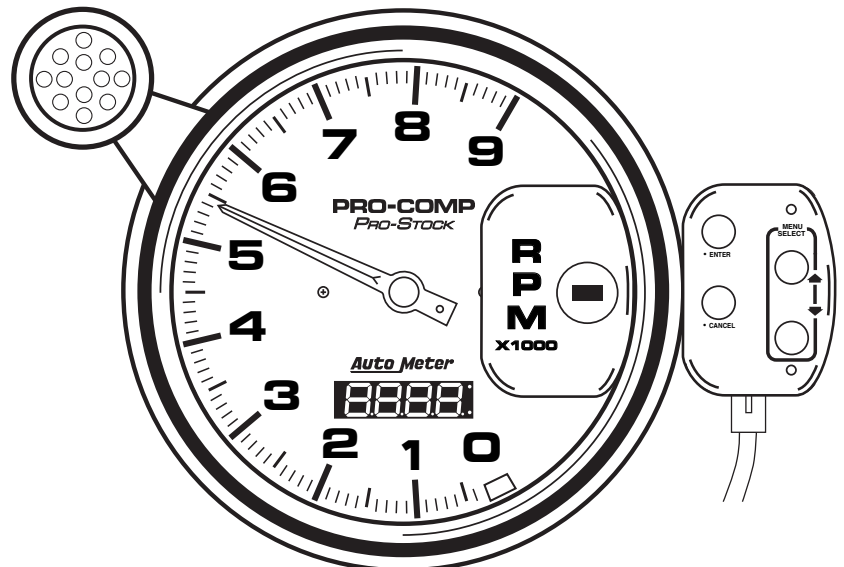
Warranty will be void if connected to coil when using an aftermarket ignition box such as, but not limited to products from the following manufacturers: MSD, Crane, Jacobs, Mallory, Holley, Etc.. Prior to installation of your tachometer, check with the ignition box manufacturer for recommended tachometer signal location.

Introduction To Tach Set-Up

1. The Pro-Stock Tach uses a menu system for configuration. Use the arrows (▲▼) to scroll up and down the menu. When you reach the bottom or top of the menu you will automatically jump to the other end of the menu.
2. To select a menu option press the ENTER button. If at any time you want to exit the menu you are currently in, press the CANCEL button. This will take you back to the TACH display and will not store the entries you have made.
3. Press the ENTER key to store the settings you have entered. After pressing ENTER, the only way to return to the original settings is to return to step 1 and reset as needed.

NOTE: The included 12 LED Shift-Lite has 3 intensity settings. The switch in the back of the Shift-Lite will select the intensity of the Shift-Lite. The intensities are as follows;

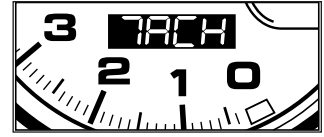
- HI - Very Bright - For use on a bright sunny day
- MED - Bright - For use on a cloudy or over cast day
- LOW - Dim - For use at night



Main Menu Options

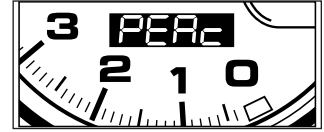
A. TACH - Tach Mode

In Tach Mode, the Tach operates as a standard tach. It displays RPM and operates the shift light. All 4 shift points are active only when the blue wire is used. When the blue wire is not used, only the first shift point is active. When the tach RPM is less than 3,000 RPM the tach will return to shiftpoint 1, and hold shiftpoint 1, and the delay timer will be reset. Timer will not start again until blue wire is activated. The shift-lite will not light after the fourth shift and *done* will be displayed. The shift-lite will not operate when the blue wire is connected to a +12V source or when the hold setpoint delay is running. Momentary 12 volts will activate the delay and shift sequence.



B. PEAK - Peak Recall

1. Press ENTER, the current peak RPM value will be displayed and a LED on the right side of the display will light up.
2. Press ENTER to return to the MAIN Menu or; press to clear the Peak Recall value. The display will change to CLR. Press ENTER and the peak will be cleared.

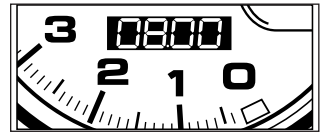
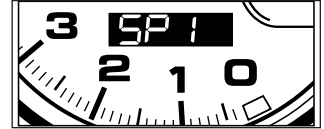


C. SP1 - Set Shift Setpoint #1

1. Press ENTER, the current setpoint will be displayed on LED.
2. Adjust Shift Setpoint 1 as follows;
 - a. Press and hold the / arrow.
 - The displayed RPM will change.
 - Continue holding / and the RPM display will increase in speed.

NOTE: The RPM value increases in 13 RPM increments. The display shows the RPM value in decimal form (RPM x 1000). The decimal point represents a comma (Example: 07.99=7,990).

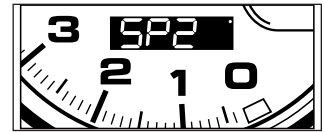
 - b. When the desired reading is displayed, press ENTER.
 - c. The word *DELAY* will now be displayed, press ENTER to continue.
 - d. The Hold Setpoint 1 Delay is now displayed. The tach reads a profile of RPM increase and decrease as a shiftpoint. The delay feature prevents inadvertently triggering a shiftpoint due to wheel spin or inconsistent throttle off the launch.
 - e. Set the delay time slightly before your known first shiftpoint with the / arrows.
3. Press ENTER to store the setpoint and return to the Main Menu.



The display shows 8,000 RPM

D. SP2, SP3 & SP4 - Set Shift Setpoint #2, 3 & 4

1. Press ENTER, the current setpoint will be displayed.
2. Adjust the Shift Setpoints as follows;
 - a. Press and hold the / arrow.
 - The display RPM will change one count.
 - Continue holding / and the RPM display will increase in speed.
3. When the desired reading is displayed, press ENTER and return to the Main Menu.

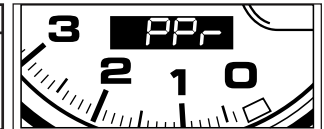


E. PPR - Pulse Per Revolution

Sets the Pulse Per Revolution Setting.

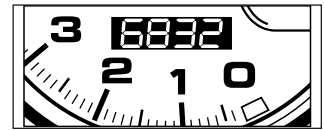
1. Press ENTER to display the current pulse per revolution setting.
2. Press the / arrows to change the PPR.
3. Press ENTER to store the setpoint and return to the Main Menu.

PPR Table
2PPR = 4 Cy 4 STR
3PPR = 6 Cy 4 STR
4PPR = 8 Cy 4 STR



F. TYPE - Displays the Tachs Model Number

1. Press ENTER to display the model number.
2. Press ENTER to return to the Main Menu.



G. SFR - Displays Current Software Revision

1. Press ENTER to display the current software version number.
2. Press ENTER to return to the Main Menu.

