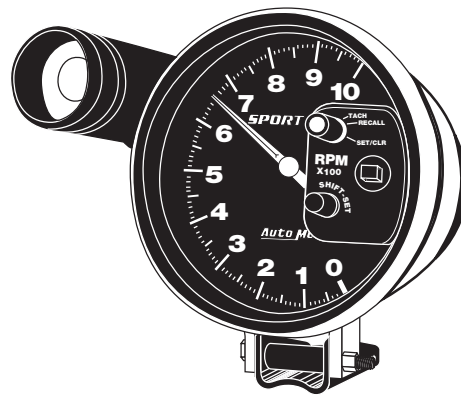




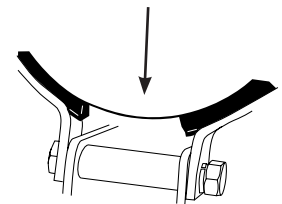
Congratulations on your purchase of the Auto Meter Pro-Lite. This sophisticated sensing unit detects even the slightest changes in pressure or temperature for oil, water and fuel. Emitting a high-intensity warning light, Pro-Lite gives you time to respond before serious engine damage occurs. Please read the following instructions carefully before installing your new Pro-Lite.

Mounting

The Pro-Lite may be mounted on the dash, on the steering column, or in other locations for optimum visibility. To mount the Pro-Lite on an Auto Meter Competition tachometer, remove the outer shock strap and loosen the bolt on the inner strap. Insert the base of the Pro-Lite under the inner strap and retighten the bolt. Reassemble the outer shock strap to the base making sure there is clearance around the inner bolt. See illustration at right.



The special design of the tachometer base allows for a variety of mounting possibilities. Attach the base using screws provided or use a pop rivet tool.



Model Selection

The Pro-Lite requires one of the switches listed below for proper operation. Select the switch with the appropriate pressure or temperature warning point for your application. Pro-Lite and Lens Kit information is also given.

MODEL	ITEM	WARNING POINT	INCLUDES
3240	PRO-LITE	—	Red lens, red night cover
3241	PRESSURE SWITCH	18PSI	—
3242	PRESSURE SWITCH	30PSI	—
3243	PRESSURE SWITCH	50PSI	—
3246	TEMPERATURE SWITCH	200°F	—
3247	TEMPERATURE SWITCH	220°F	—
3248	TEMPERATURE SWITCH	275°F	—
3250	LENS KIT	—	Blue lens, blue night cover
3251	LENS KIT	—	Yellow lens, Yellow night cover
3252	LENS KIT	—	Red lens, Red night cover

NOTE: SWITCH LIGHTS WITHIN A 5% RANGE OF NUMBER SHOWN.

Additional Information

Night Racing: The Pro-Lite is designed for high brilliance during daylight racing and may be too bright for night racing. The translucent cover supplied with the Pro-Lite should be used over the lens during night racing to reduce brightness.

Bulb Replacement: Remove three screws on light. The bulb located in the rear section is easily removed by twisting it to the left. Replace with No. 1076 or 1142 automotive bulb.

Lens Change: Remove three screws on light. Remove snap ring, change lens and replace snap ring. Tap snap ring against lens for tightness.

Installation

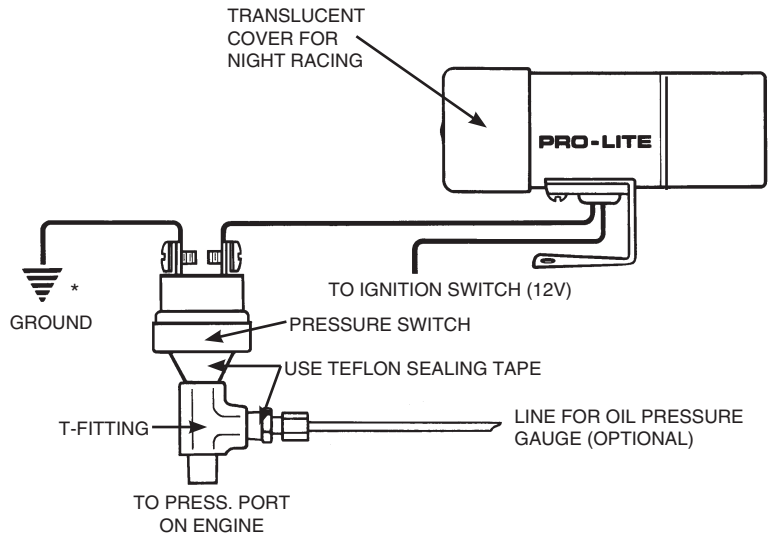
For Pressure PRO-LITE™

1. Thread the Pressure Switch into the Pressure Port on the engine. A T-Fitting should be used if an oil pressure or fuel pressure gauge is used along with the Pro-Lite. (If an oil pressure or fuel pressure gauge is not being used, disregard the T-Fitting and thread the Switch directly into the Pressure Port on the engine.) Use thread sealing compound on switch threads.

2. Connect one wire from the Pro-Lite to the Ignition Switch (12V). Connect the other wire to either terminal on the Switch, as shown in diagram. Connect ground wire from the other Switch terminal to a good engine ground.*

Note: Do not connect Pro-Lite to a 12 volt circuit that allows it to remain on while engine is off. Plastic lens will melt if Pro-Lite is left on for an extended period of time.

3. Recheck installation. The Pro-Lite will come on when the Ignition Switch is turned on. It will go off as pressure increases.



* Some pressure & temperature switches are internally grounded (one terminal) and do not need a separate ground wire. It is necessary for these switches to be mounted in a good grounded location in order for the Pro-Lite to function correctly.

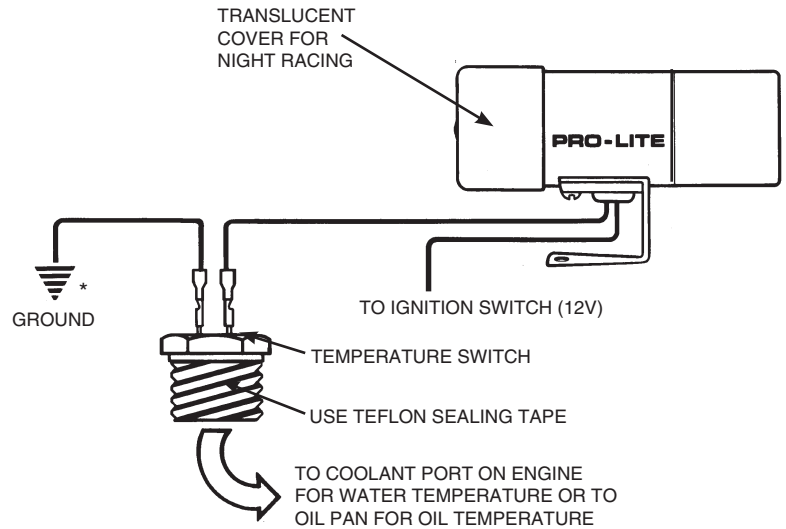
Installation

For Temperature PRO-LITE™

1. Thread the Temperature Switch into the Coolant Port on the engine for water temperature, or into the Oil Pan for oil temperature. Use thread sealing compound on switch threads.

2. Connect one wire from the Pro-Lite to the Ignition Switch (12V), and the other wire to either terminal on the Switch, as shown in the diagram at right. Connect the ground wire from the other Switch terminal to a good engine ground.* **Note:** Do not connect Pro-Lite to a 12V volt circuit that allows it to remain on while engine is off. Plastic lens will melt if Pro-Lite is left on for an extended period of time.

3. Recheck installation. Start the engine and make sure the Temperature Switch does not leak around the threads.



IMPORTANT: Some late model vehicles use electric sensors in their pressure and temperature switches for engine control functions. Before removing the original switch, we recommend that you contact your automotive dealer to be sure no critical functions will be disrupted.