



BCT-200J Download Application (AC-65) Instruction Manual



Thank you for purchasing the AC-65 Data Download Application for your BCT- 200J Handheld Tester from Auto Meter Test Equipment. The AC-65 Data Download Application enables data transfer from your BCT-200J model tester to your PC for storage, record keeping, and analysis. These instructions will help guide you through the AC-65 software installation and operation process.



BCT-200J Download Application
Auto Meter Products, Inc.
Version 2.0.5

Copyright 2005
Auto Meter Products, Inc.

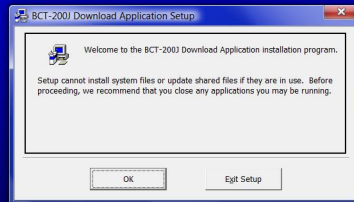
BCT200J Download Application (AC-36) Instructions

This software will allow data to be downloaded from the BCT200J and saved on a PC. Test results can then be displayed on the PC and can be printed on the PC's printer.

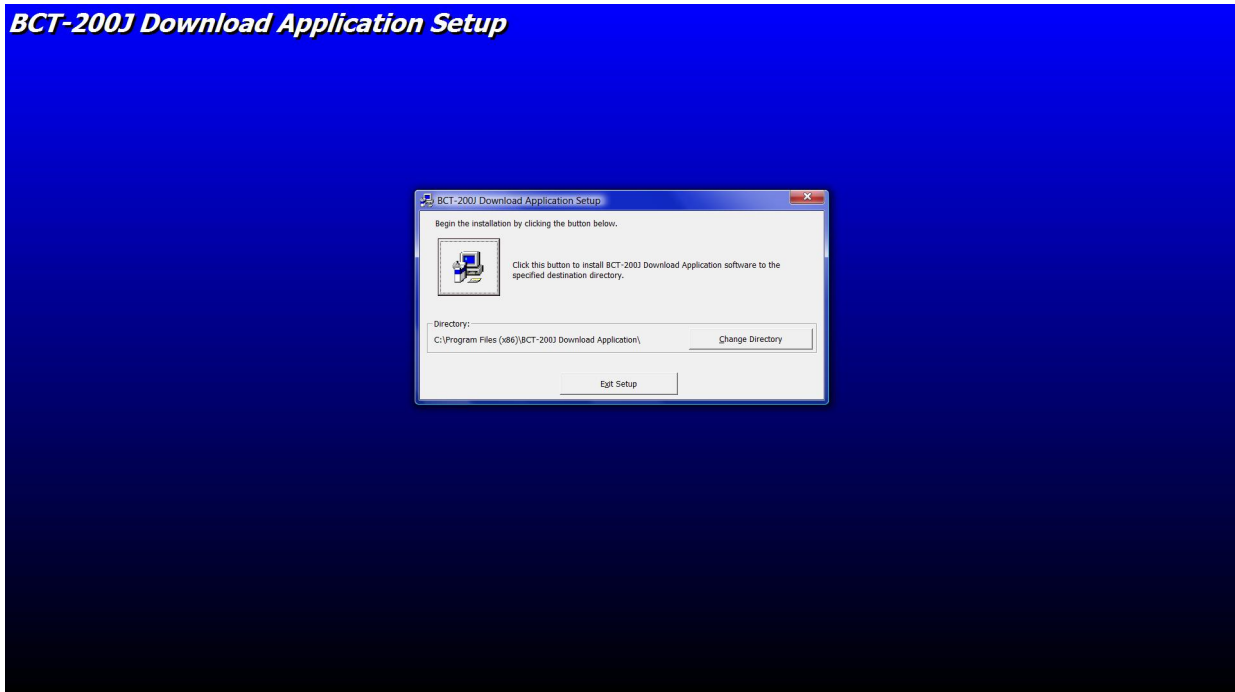
INSTALLATION:

1. Make sure the computer is on and booted up. Save any data and close any open applications. Load the included CD into the computer. If auto run is enabled on the computer, the installation program will start automatically. If auto run is not enabled, go to the CD drive then run setup.exe. The following screen will appear on the computer. Click on the OK button to continue with the installation.

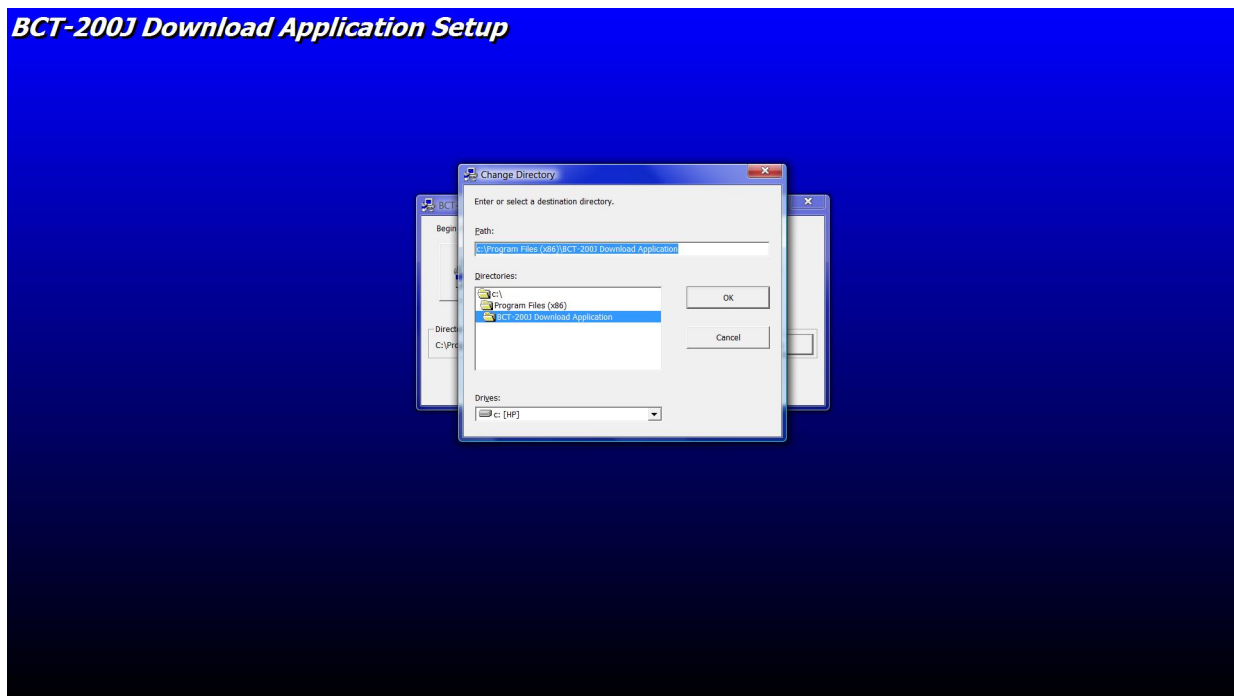
BCT-200J Download Application Setup



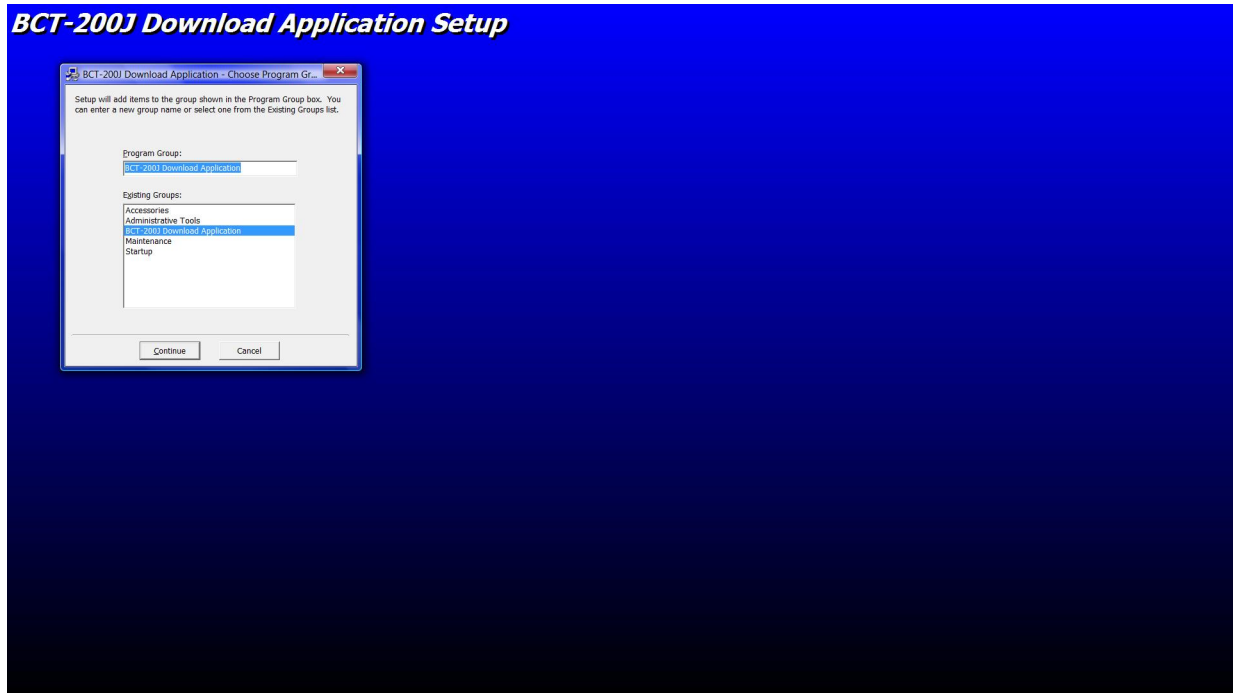
2. The next screen will ask where to install the BCT-200J Download Application software. Accept the default location by clicking on the computer icon button or change it by clicking on the Change Directory button.



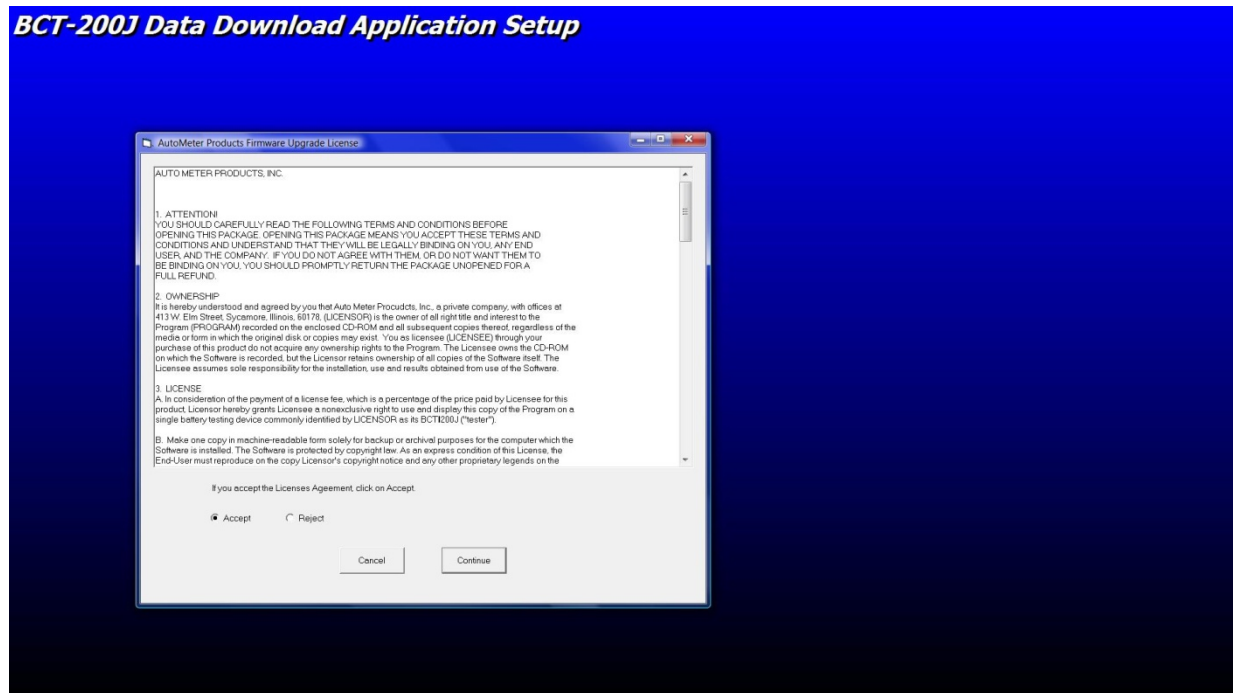
3. If you chose to change the directory then enter the new directory where the program will be installed, and then click on OK. Click on the computer icon button to install the BCT-200J Download Application software.



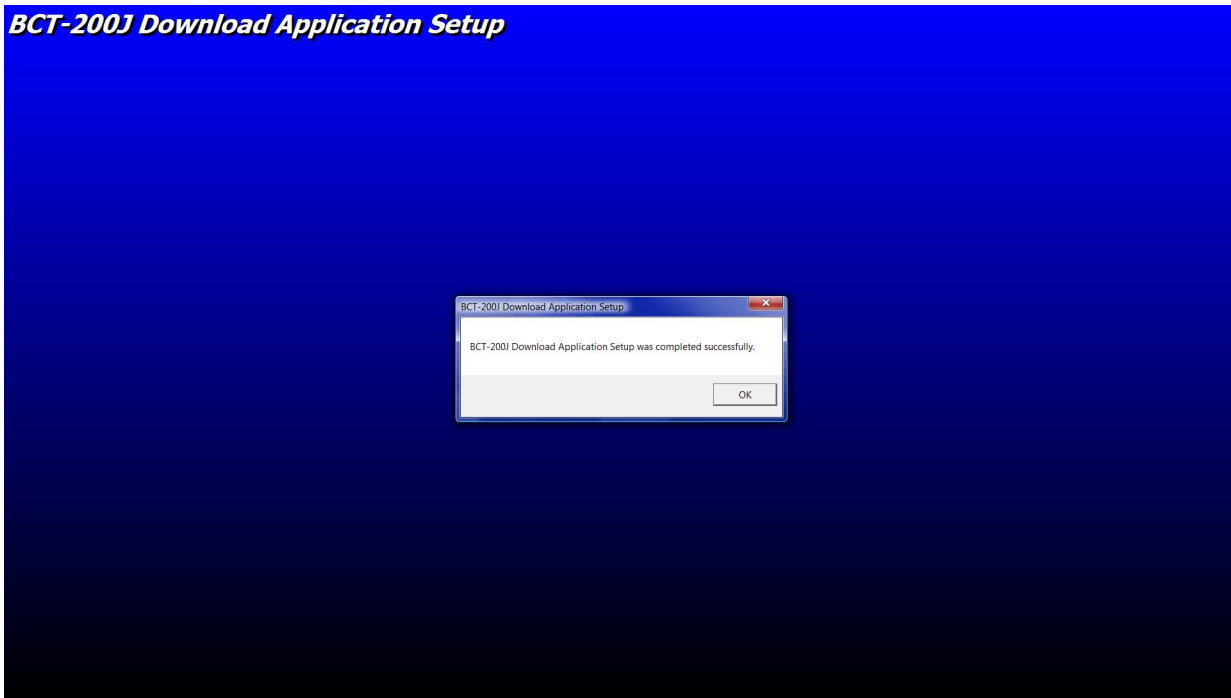
4. The next screen will prompt for the program group in which to place the BCT-200J Download Application. Accept the default location or choose another group by highlighting it, then click on Continue. Clicking on Cancel will exit the installation program.



5. The next screen will display the license agreement. If you agree with the license agreement then click on the Accept button and then click on Continue. If for some reason you disagree with the license agreement then click on Cancel to exit the installation program.



6. The BCT-200J Download Application software will finish installing. Click on OK to return to the desktop.



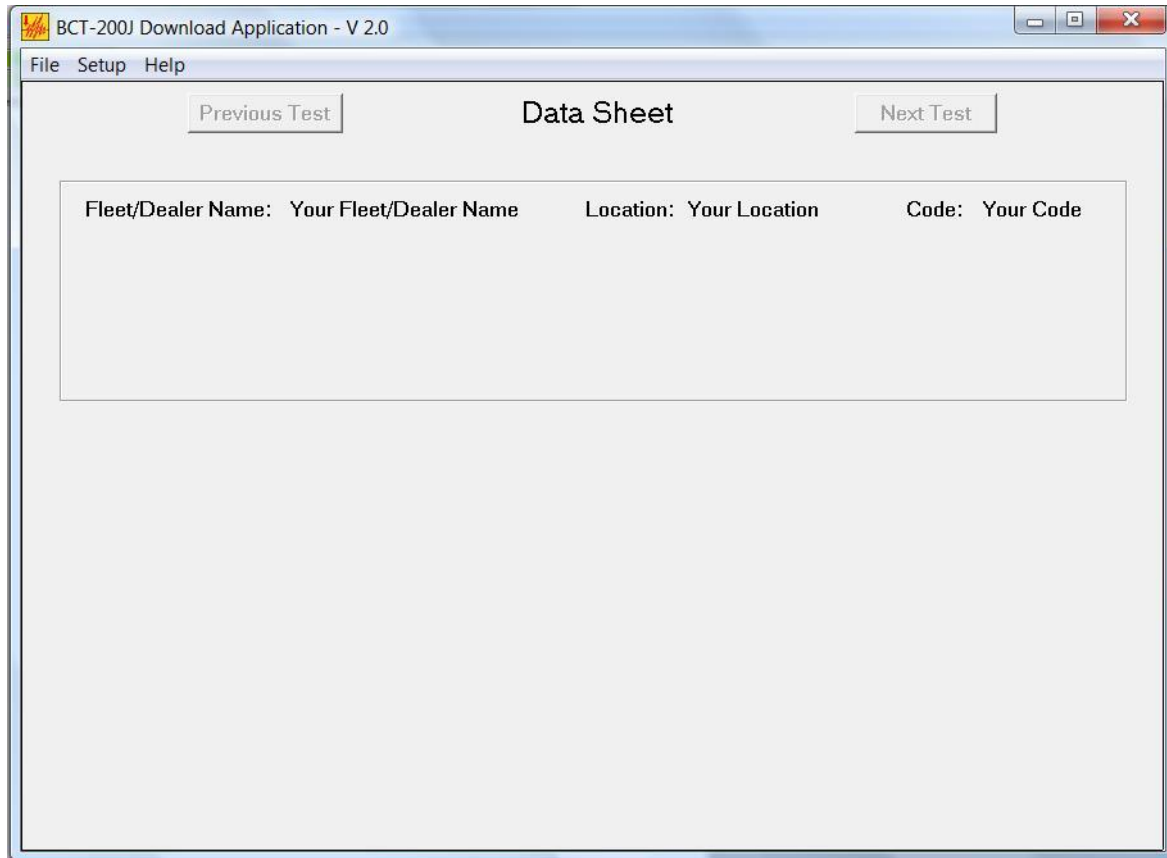
STARTING THE PROGRAM:

1. To run the BCT-200J Download Application software, click on START, PROGRAMS, BCT-200J DOWNLOAD APPLICATION.
2. The BCT-200J Download Application will start and the following screen will appear. Click Continue to move to the main screen.



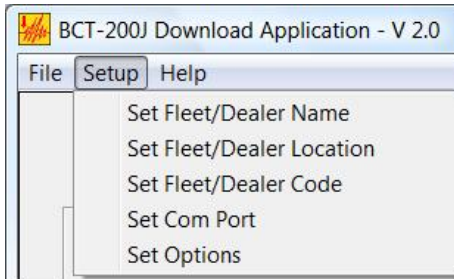
USING THE PROGRAM:

1. From this screen the features of the program can be accessed.

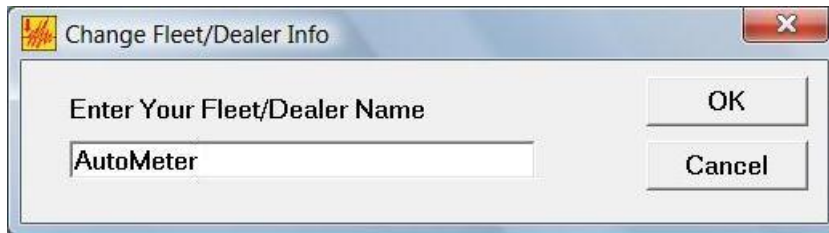


SETUP MENU:

Any changes made from this menu are saved and reloaded each time the program is ran.



1. Set Fleet /Dealer Name. This menu option sets the Fleet/Dealer name that will appear on all displays and printouts. Click on the menu item and the following window will appear.



Enter the Fleet/Dealer Name and click OK to save. Click Cancel to close the window without saving.

2. Set Fleet/Dealer Location. This menu option sets the Fleet/Dealer Location that will appear on all displays and printouts. Click on the menu item and the following window will appear.



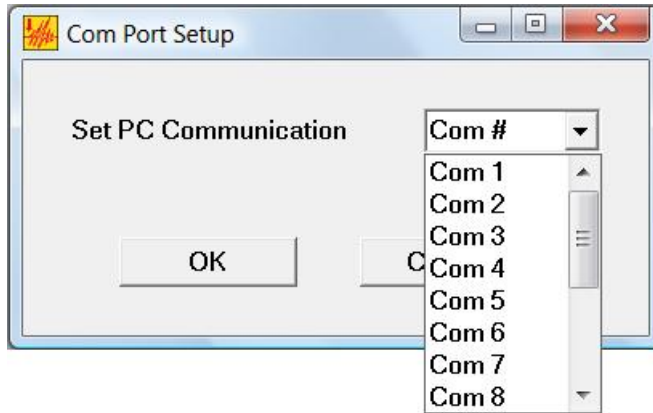
Enter the Fleet/Dealer Location and click OK to save. Click Cancel to close the window without saving.

3. Set Fleet/Dealer Code. This menu option sets the Fleet/Dealer Code that will appear on all displays and printouts. Click on the menu item and the following window will appear.



Enter the Fleet/Dealer Code and click OK to save. Click Cancel to close the window without saving.

4. Set Com Port. This sets which PC serial port will be used to download the data from the BCT-200J. Click on the menu item and the following window will appear.



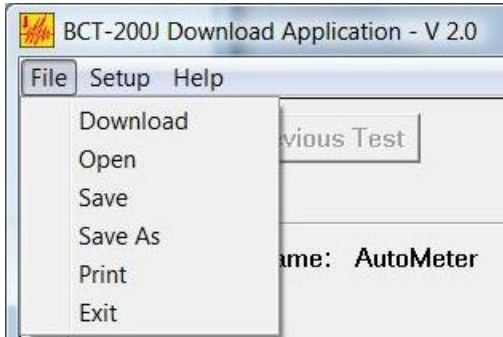
Click on the small arrow on the serial port list box. A list of serial ports will appear. Select the serial port that will be used to connect to the BCT-200J. Click OK to save. Click Cancel to close the window without saving.

Note: The serial port must be set correctly before a download can occur. If a serial port is selected that does not exist then an error will occur while attempting a download and the program will close. If this happens, reopen the program and set the serial port correctly as described above.

5. Set Options allows a selection between showing VIN or Serial # and Mileage or Hours.



FILE MENU:

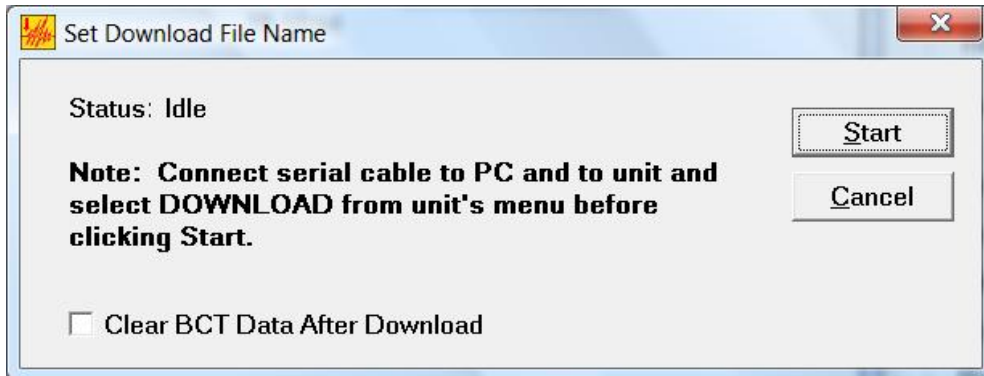


1. Download. This option will download the data from a BCT200J and save the data to a text file on the PC. Before choosing this option connect the round 6 pin plug of the AC-10 cable into the jack at the top of the BCT-200J. Connect the 9-pin DB connector of the AC-10 cable to a serial port on the computer.

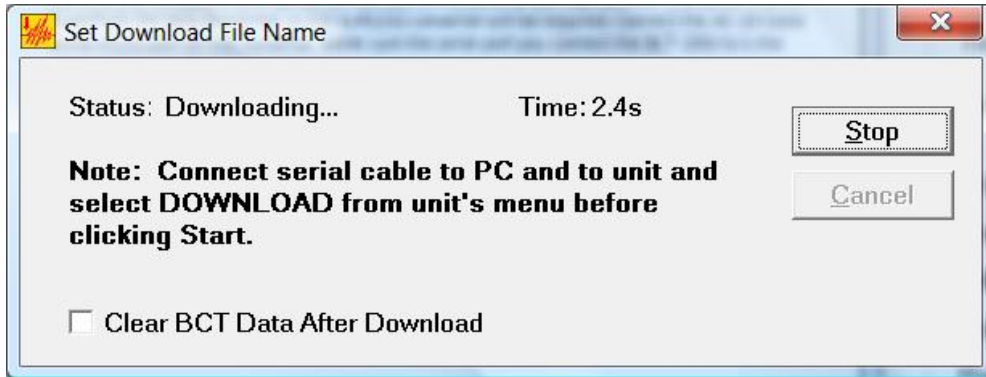
Note: Some newer computers and laptops do not have an RS232 serial port but do have USB ports. In order to perform the data download, a USB to RS232 converter will be required. Connect the AC-10 Cable to the RS232 port on the converter. Make sure the serial port is selected correctly as described above.

Select the Clear BCT Data After Download box before clicking Start to automatically delete the data from the BCT-200J after the download is complete.

Click on the Start button to begin the download.



As the data is downloaded the status line will show downloading and the time duration of the download.

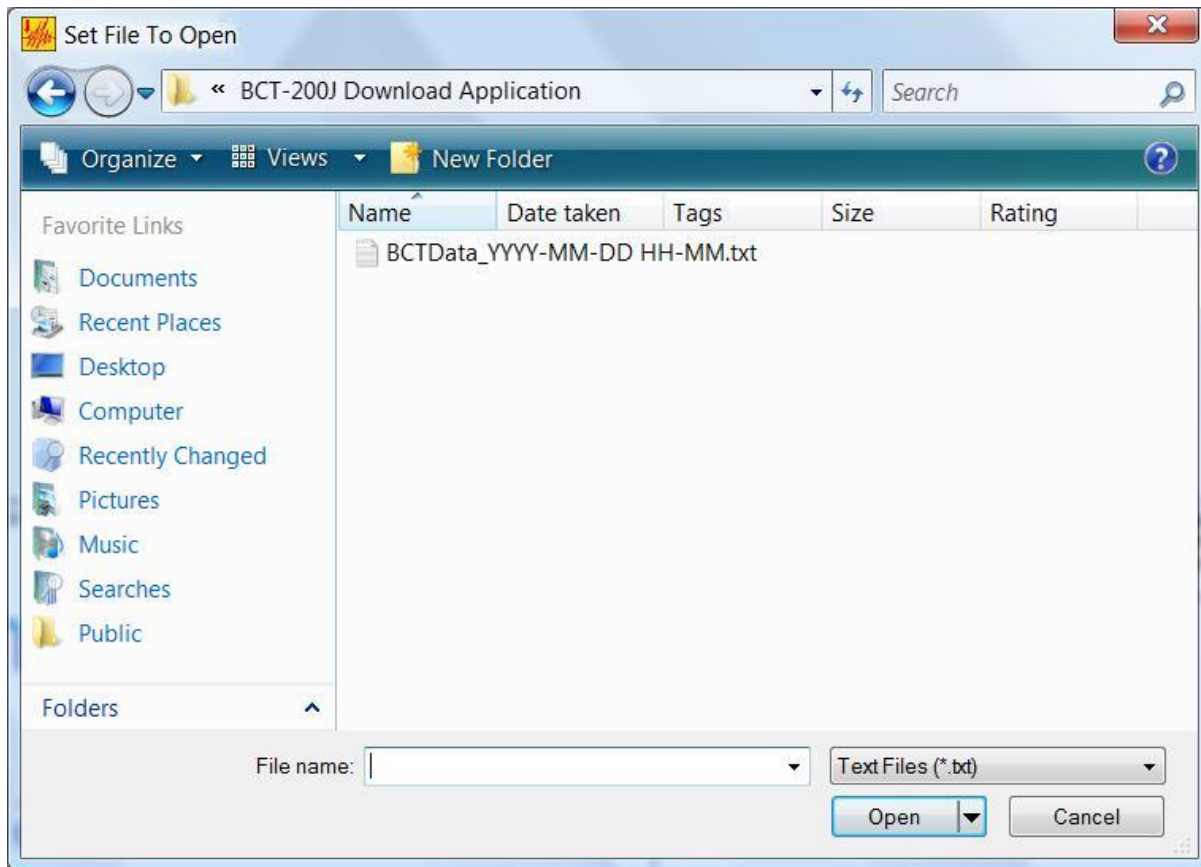


When the download is complete, the data will automatically be saved as a text file with the following filename format:

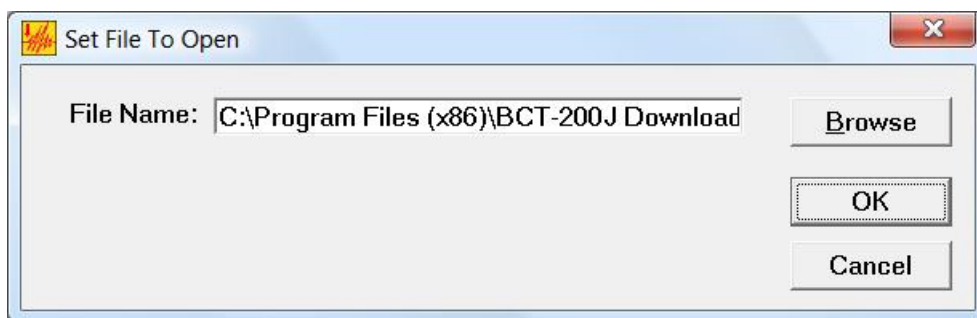
BCTData_YYYY-MM-DD-HH-MM.txt

The data will be saved in the directory where the BCT-200J Download Application software is located. (Refer to INSTALLATION on pages 2 - 5.) After saving, the data will also be loaded into the program.

2. Open: This will open a previously saved file. Select the path and file to be opened.

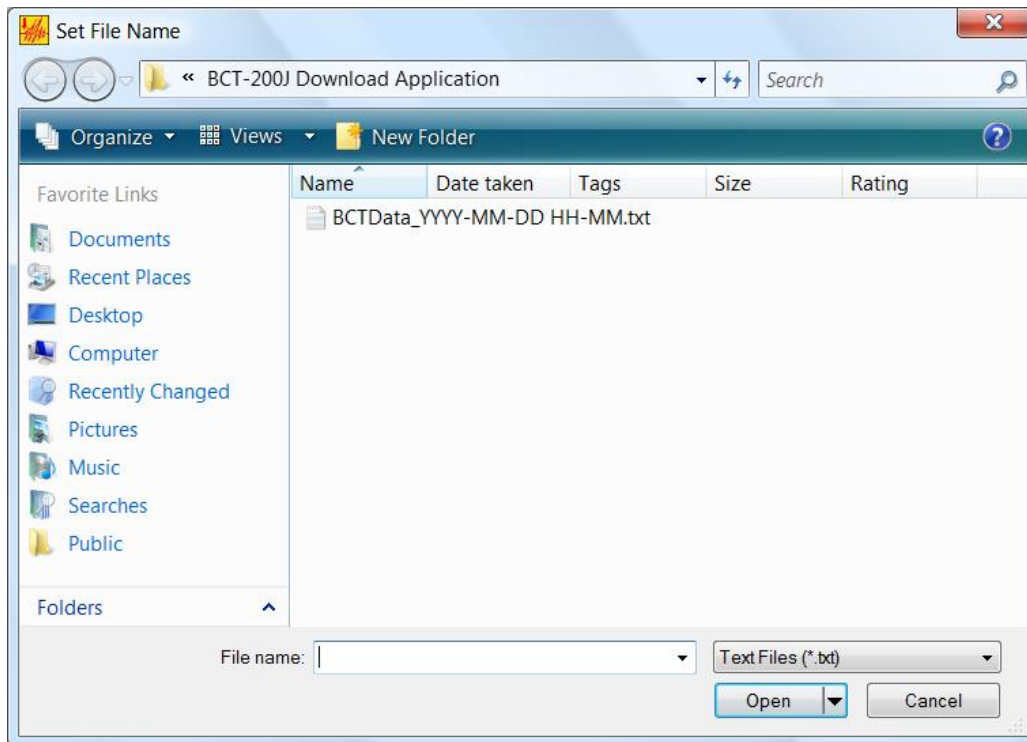


Click Open, a window will be displayed with the file choice. The file choice can be changed by clicking Browse.

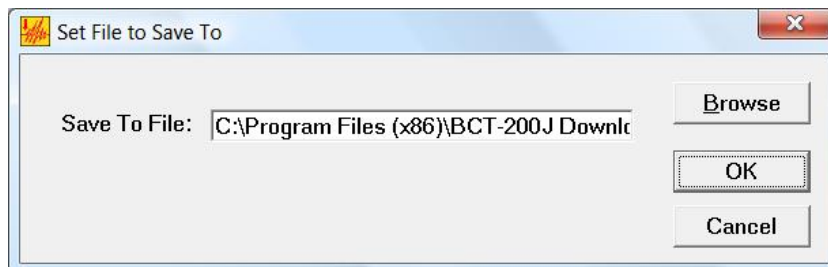


Click OK to load in the file.

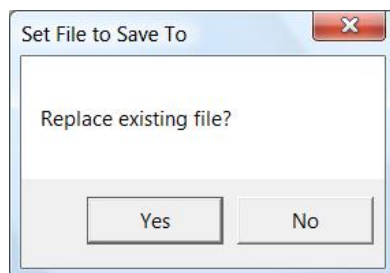
- 3. Save: Clicking this button will save the data in the program to the current file.
- 4. Save As: This will save the data into a file selected by the user.



Select or type in the filename, then click Open. Another window will be displayed with the filename where the data will be saved.



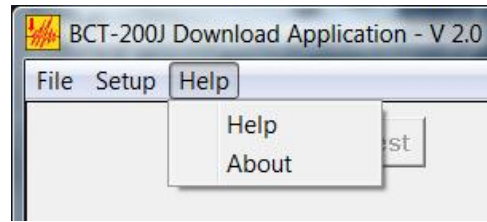
Click OK to save the data. If the file already exists a message box will appear.



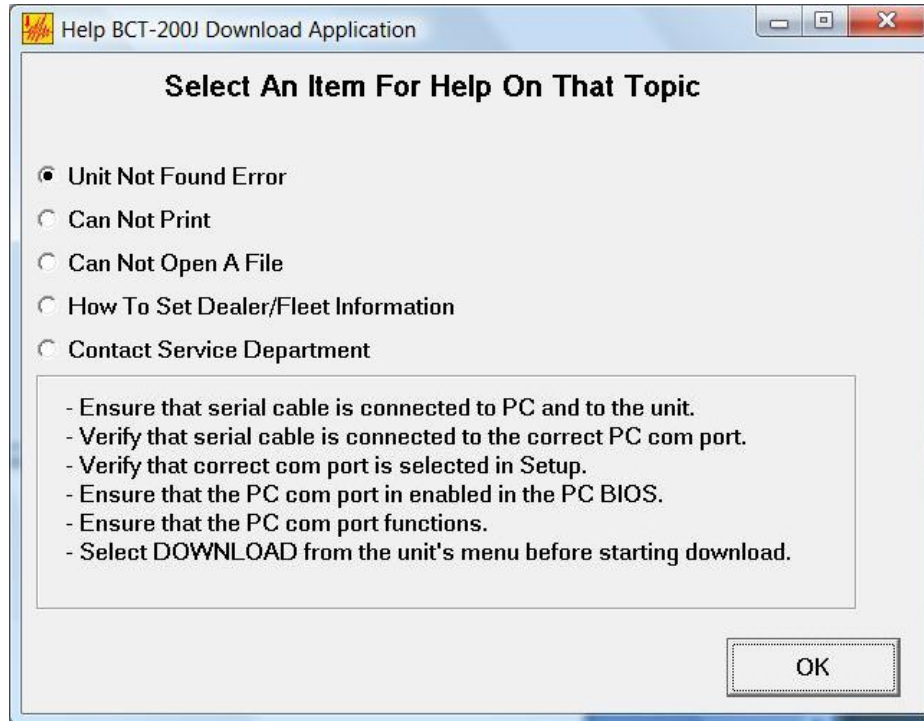
Click Yes to overwrite the file or click No to cancel the save.

- 5. Print: This menu option will print the data that is displayed on the main window.
- 6. Exit: This will exit the program.

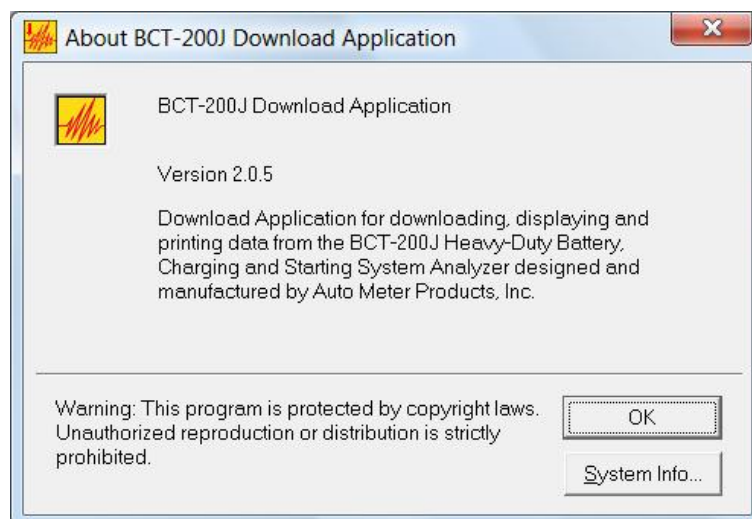
HELP MENU:



1. Help. This will open a window that will display various help topics. Click on the option to display the help for that subject. Click OK to close the help window.



2. About. This will open a window that describes the program. Click OK to close this window.



DATA DISPLAY WINDOW:

This is the window that displays the downloaded and entered information.
The Next and Previous buttons will move forward and backward through the data.

The screenshot shows a software window titled "BCT-200J Download Application - V 2.0" with a menu bar containing "File", "Setup", and "Help". The main area is titled "Battery Data Sheet" and includes a "Previous Test" button on the left and a "Next Test" button on the right. The version "VERSION 4.06PM" is displayed in the top right corner. The form contains the following fields:

- Fleet/Dealer Name: AutoMeter
- Location: Sycamore, IL
- Code: 0001
- VIN:
- Vehicle ID Number: 000000
- Mileage:
- Technician Number: 0000
- Repair Number:
- Date:
- Time:
- Customer:
- Comments:

Below the form is a section titled "12V Battery Test" containing the following data:

- Test#: 1
- Date/Time: 01/01/05 12:00AM
- GOOD, NEEDS CHARGE**
- Voltage: 11.92V.
- Charge: 13%
- Type: LEAD-ACID
- Rated CCA: 500A.
- Estimated CCA: 530A.
- Temperature: 77F.
- Loaded Voltage: NA
- Date Code:

1. PM Data Sheet
2. Battery Data Sheet
3. Battery Bank Data Sheet
4. Starter Data Sheet
5. Alternator Data Sheet
6. Mag Circuit Data Sheet
7. Main Cables Data Sheet
8. Charge Cables Data Sheet
9. Voltage Drop Data Sheet
10. Liftgate Charge Cables VDrop Data Sheet
11. Liftgate Motor Cables VDrop Data Sheet
12. Liftgate Truck Cables VDrop Data Sheet

Some data sheets have a warranty claim option where the data can be saved to a claim file. Enter the Warranty Claim #, VIN #, Repair number and mileage then click on the Save To Claim File button. A warranty claim file will be created that contains the associated data sheet(s). For alternator and starter claim files the number of tests to save to the claim file can be set so that previous tests (i.e. cable drop tests and battery tests) will also be documented in the claim file.

The format of the claim file name is:

Claim_Code#_VIN#.txt (i.e. Claim_0001_ABCDEF12345.txt)

The file will be saved in the directory where the BCT-200J Download Application software is located. (Refer to INSTALLATION on pages 2 - 5.)

The screenshot shows a software window titled "BCT-200J Download Application - V 2.0" with a menu bar containing "File", "Setup", and "Help". The main window is titled "Battery Warranty Data Sheet" and features several input fields and buttons. At the top, there are "Previous Test" and "Next Test" buttons. Below them is a "Warranty Claim #:" field, a "Save To Claim File" button, and the text "VERSION 4.06PM". The form is divided into sections: "Fleet/Dealer Name: AutoMeter", "Location: Sycamore, IL", and "Code: 0001". Below this are fields for "VIN:", "Vehicle ID Number: 000000", and "Mileage:". Further down are fields for "Technician Number: 0000", "Repair Number:", "Date:", and "Time:". At the bottom of this section are "Customer:" and "Comments:" fields. A separate section titled "12V Battery Test" contains the following information: "Test#: 4", "Date/Time: 12/01/05 01:10AM", and a red warning "**BAD BATTERY**". Below the warning are test results: "Voltage: 12.20V.", "Charge: 47%", "Type: LEAD-ACID", "Rated CCA: 500A.", "Estimated CCA: 100A.", "Temperature: 5F.", "Loaded Voltage: NA", and a "Date Code:" field.