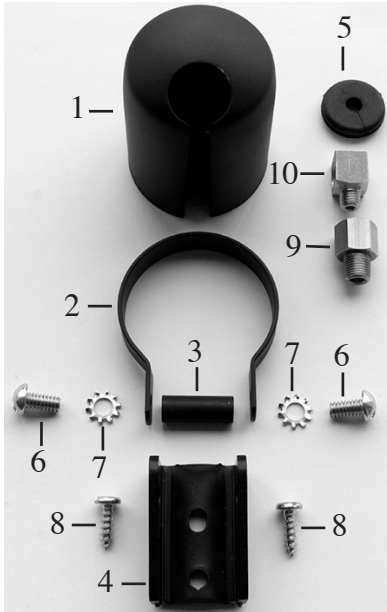


## Contents



1. Gauge cup
2. Strap
3. Spacer
4. Base
5. Grommet
6. 1/4-20 screws (qty 2)
7. Star washers (qty 2)
8. #10x5/8" screws (qty 2)
9. 1/8"NPT male/female extension fitting (included with 2-1/16" & 2-5/8" cups only) intended for mechanical pressure gauges with 1/8"NPT pressure fitting.
10. Optional right angle adapter (included with 2-1/16" & 2-5/8" cups only) intended for mechanical pressure gauges with 1/8"NPT pressure fitting and nylon or copper tubing.

Optional Components Available through AutoMeter, not included with cups

- #3270 Right angle adapter. 1/8"NPT female to #3AN male
- #3271 Right angle adapter. 1/8"NPT female to #4AN male
- #3272 Right angle adapter. 1/8"NPT female to 1/8"compression ferrule (same as item 10 above)
- #3278 Right angle adapter, Blue anodized aluminum. 1/8"NPT female to #4AN male.
- #3273 45 degree #4AN female to #4AN male for gauges with factory #4AN fitting.
- #3274 90 degree #4AN female to #4AN male for gauges with factory #4AN fitting.
- #3224 1/8" copper tubing kit for mechanical gauges with 1/8"NPT pressure fitting.
- Several #4 and #3 Braided Stainless Steel Hose Kits in various lengths.

**Assembly:** It is easiest to pre-assemble the cup outside of the vehicle prior to mounting to the vehicle. You will first want to loosely attach the strap to the base, using the spacer and the two 1/4-20 screws and star washers (reference picture 2). Temporarily slide the cup into the strap, then test fit your gauge into the cup. You will find in most applications it is necessary to trim the length of the gauge mounting studs to fully insert the gauge into the cup. You will not void the AutoMeter warranty by trimming the stud length. On AutoMeter factory LED lit mechanical and Short Sweep gauges, it will be necessary to modify the lighting connection due to the extra length of these gauges. These gauges measure 1-3/4" from behind the bezel to the back of the case vs. 1-1/2" of most other versions.



Picture #2



Picture #3

For Mechanical LED lit gauges, you may bend the light terminals down as shown in picture 3. This applies to deep case gauges that measure 1-3/4" from behind the bezel to the end of the case.



Picture #4

For short sweep electric LED lit gauges, you may solder the wires to the terminals as shown in picture 4, then insulate with heat shrink or electrical tape. This applies to deep case gauges that measure 1-3/4" from behind the bezel to the end of the case.

Once you have trimmed the studs as needed, and confirmed lighting connection clearance on factory LED lit gauges, remove the cup from the strap assembly. Mount the strap assembly (that is still loosely connected to the base) to your mounting surface. You may use the included #10x5/8" screws for this. Now that the strap assembly is mounted to the vehicle, install the grommet into the cup (if being used) and slide the cup into place. For electric gauges, pull your wiring through the cup from the back. We recommend leaving enough wire slack to be able to hook up your gauge, then slide the gauge into place. For mechanical pressure gauges, you may pull the pressure line through the cup from the back. Again leaving enough slack for gauge hook up. For mechanical temperature gauges, the capillary tubing will have to be fed through the cup from the front as the tubing is not able to be removed from the gauge. Once you are satisfied with the angle and mounting of your gauge, tighten the two 1/4"-20 screws to lock the gauge and angle in place.