

# INSTALLATION INSTRUCTIONS

## Ford Mustang

### Replacement Pillar

2650-1719-00



1. Remove the factory "A" pillar cover. Start by pulling down on the section closest to the rear of the car. Then pull forward (towards you) on the section closest to the windshield.
2. Install provided nut into oval slot as seen in photo. Photo #1.
3. Cutting off the original pillar is necessary. When finished, the new pillar will cover the cut end of the original.
4. On a flat surface using a hack saw, cut your factory "A" pillar as shown in the photo. Photo #2.
5. Use the white reinforcing ribbing as a blade guide when cutting. See close up photo. Photo #3.
6. Reinstall the upper portion of the factory pillar (the part that is furthest back, closest to the rear of the car)
7. You are now ready to install your new AutoMeter/GaugeWorks replacement pillar and gauges.
8. Slide your new pillar into place with a downward and forward motion.
9. After your new pillar is fully seated, pull the top portion out (towards you) as seen in photos #4 & #5. This will allow easy alignment of the provided screw into the nut. You may need to move the nut within the slot for proper fitment.

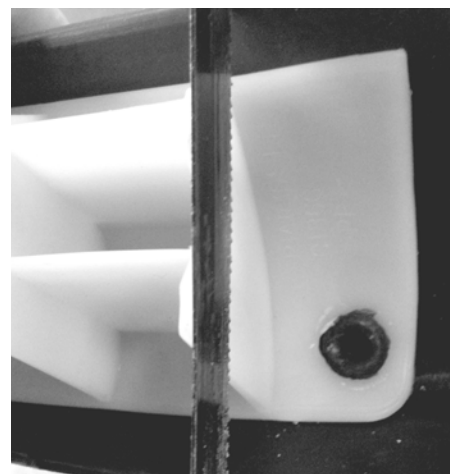
#1



#2



#3



#4



#5



#### Auto Meter Gauge Works Three Year Limited Warranty

Gauge Works warrants to the consumer that all Auto Meter Gauge Works products will be free from defects in material and workmanship. Products that fail will be repaired or replaced at Auto Meter Gauge Works' option to the consumer, when determined by Auto Meter Gauge Works that the product failed due to defects in material or workmanship. This warranty is limited to the repair or replacement of parts in the Auto Meter Gauge Works Product and the necessary labor done by Auto Meter Gauge Works to effect the repair or replacement of the Auto Meter Gauge Works product. In no event shall this warranty exceed the original purchase price of the Auto Meter Gauge Works product nor shall Auto Meter Gauge Works be responsible for special, incidental or consequential damages or costs incurred due to the failure of this product. Warranty claims to Auto Meter Gauge Works must be transportation prepaid and accompanied with proof of purchase. This warranty applies only to the original purchaser of product and is non-transferable. Improper use or installation, accident, water damage, abuse, unauthorized repairs or alterations voids this warranty. Auto Meter Gauge Works disclaims any liability for consequential damages due to breach of any written or implied warranty on all products manufactured by Auto Meter Gauge Works. This warranty is made solely by Gauge Works with Auto Meter being the agent to contact for warranty claims. If the partnership between Auto Meter and Gauge Works dissolves, then all warranty adjustments will be covered by the Gauge Works Co.