

# BCT-200J CABLE AND CLAMP REPLACEMENT INSTRUCTIONS



2650-1810-00

1. Remove battery cover on the back of the tester by removing the four (4) Phillips head screws using a Phillips screw driver. (Illustration 1.)
  - Note:** Be careful not to drop any of the hardware into the tester. If hardware falls into the tester, be sure it is removed prior to using the tester, as loose hardware could cause a short circuit inside the tester.
2. Remove both volt lead Phillips head screws, lock washers, and flat washers using a Phillips screw driver. (Illustration 2)
3. Remove the 7/16" hex head bolt, lock washer, and flat washer from the positive and negative side current lead using a 7/16" hex, 1/4" drive socket. (Illustration 3 & 4)
4. Pull both cables out of the tester (Illustration 5)
5. Insert cables through the grommets. (Illustration 6)
6. Continue installing replacement cable and clamp assemblies in reverse order of removal. Note hardware assembly order. (Fastener, lock washer, then flat washer) (Illustration 7)
7. Tighten hardware. Recommended torque:
  - a. 7/16" hex head screws: 22 IN. LBS.
  - b. Phillips head Volt lead screws: 7 IN. LBS

**Note:** When installing the volt lead terminals using the Phillips head screw, ensure that the terminal does not touch the copper buss bar. (Illustration 8)



Illustration 1

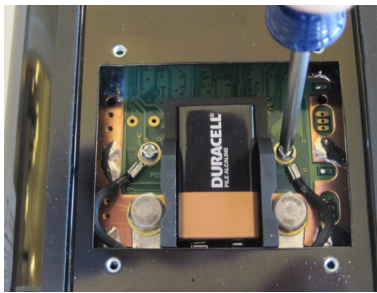


Illustration 2



Illustration 3

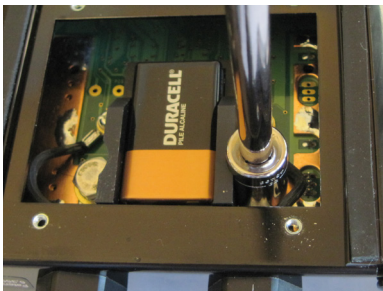


Illustration 4



Illustration 5



Illustration 6



Illustration 7

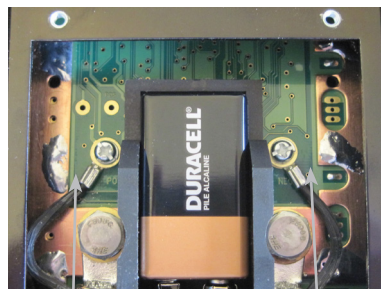


Illustration 8

Required Gap. Terminal can not touch copper buss bar.