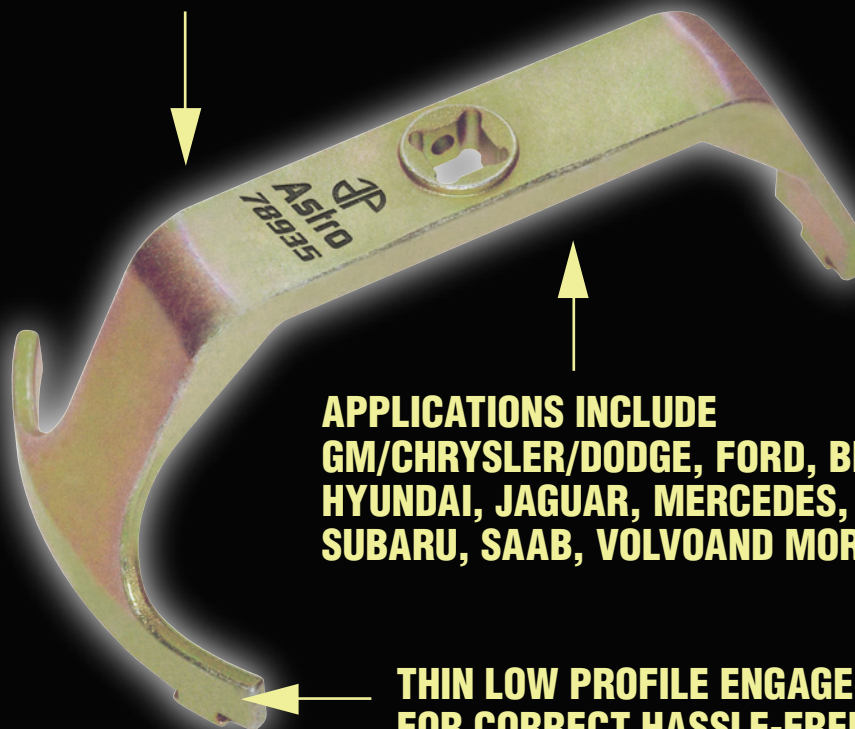


**NEEDED TO REMOVE FUEL TANK LOCKING RINGS ON FUEL SENDERS FOR MANY 2004 AND NEWER VEHICLES**



**Model # 78935**

**UNIVERSAL FUEL TANK LOCK WRENCH**



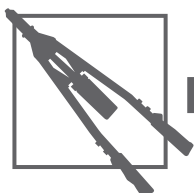
**APPLICATIONS INCLUDE GM/CHRYSLER/DODGE, FORD, BMW, HYUNDAI, JAGUAR, MERCEDES, NISSAN, SUBARU, SAAB, VOLVO AND MORE**

**THIN LOW PROFILE ENGAGEMENT FOR CORRECT HASSLE-FREE FITMENT ON FUEL LOCK RINGS**

**7" SIZE, 1/2" DRIVE FOR USE WITH RATCHET OR BREAKER BAR**

Model	Specification
78935	7" span, 3 point engagement

- MODEL YEAR 2004+, LIST DOES NOT INCLUDE ALL APPLICATIONS
- BMW
- CHRYSLER/DODGE: MINI VANS, PT CRUISER, DAKOTA, DURANGO, CHARGER, MAGNUM, JEEP COMPASS (AND MORE JEEP)
- FORD: F-150 (AND MORE TRUCKS), EXPLORER, ESCAPE
- GM: 1/2-TON AND 3/4-TON TRUCKS, SUBURBAN, MALIBU.
- HYUNDAI: SANTA FE (AND MORE HYUNDAI)
- JAGUAR
- MERCEDES: (ALL W/ "BAYONET TYPE CAP") PLATFORM #'S 222, 213, 242, 205, 253, 218, 217, 212, 204, 447, 924
- MERCURY
- NISSAN: PATHFINDER, SENTRA (AND MORE NISSAN)
- SAAB: 03-11 9-5, 9-3
- VOLVO



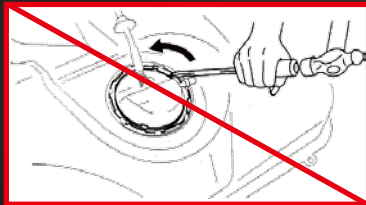


MODEL NO.

**78935**

# UNIVERSAL FUEL TANK LOCK WRENCH

- ✓ Needed to remove fuel tank locking rings on fuel senders for many 2004 and newer vehicles
- ✓ Applications include GM/Chrysler/Dodge, Ford, BMW, Hyundai, Jaguar, Mercedes, Nissan, Subaru, Saab, Volvo and more
- ✓ 7" size, 1/2" drive for use with ratchet or breaker bar



**"NO MORE HAMMER AND PUNCH"**



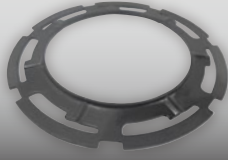
**ALL ARE**

**7"**

Dodge



Ford



GM



Hyundai



Mercedes



## POPULAR APPLICATIONS FOR THIS TOOL

Model year 2004+, list does not include all applications

- **BMW**
- **Chrysler/Dodge**  
Mini vans, PT Cruiser, Dakota, Durango, Charger, Magnum, Jeep Compass (and more Jeep)
- **Ford**  
Taurus/Taurus X/Sable, Ranger, MKS, Fusion/Milan/MKZ, Flex, F-150, F-Super Duty 250-550, Explorer/Mountaineer/Sport Trac, E-Series, Expedition/Navigator, Escape/Mariner/Hybrid
- **GM**  
1/2-ton and 3/4-ton trucks, Suburban, Malibu
- **Hyundai**  
Santa Fe (and more Hyundai)
- **Jaguar**
- **Mercedes**  
(all w/ "bayonet type cap") platform #s 222, 213, 242, 205, 253, 218, 217, 212, 204, 447, 924
- **Mercury**
- **Nissan**  
Pathfinder, Sentra (and more Nissan)
- **Saab**  
03-11 9-5, 9-3
- **Volvo**

Discover other fuel system service on our website.