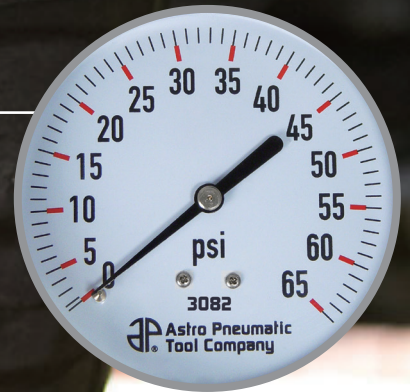


Model No. **3082**

TPMS DIAL TIRE INFLATOR

WITH STAINLESS STEEL HOSE (0~65PSI)

*Uniquely Designed For
Tire Pressure Monitoring Systems
Where Accuracy Matters!*



TAKES UP TO 200PSI FROM THE COMPRESSOR, READS UP TO 65PSI FROM THE TIRE.

- 3 in 1 function: inflate, deflate and measure tire pressure
- Solid aluminum body covered with rubber sleeve for extra comfort and durability
- Two position inflate/deflate lever; Works with CO₂ and Nitrogen

SPECIFICATIONS			
Measuring Range	0-65 psi	Units	PSI
Resolution	1 psi	Accuracy	+/- <1 psi or +/- 1.5%
Optimal Working Temp.	32°F - 104°F (=0°C - 40°C)		

Works with nitrogen and CO² Systems

TAKES UP TO 200PSI FROM THE COMPRESSOR, READS UP TO 65PSI FROM THE TIRE.

NEW 21" STAINLESS BRAIDED HOSE for increased durability



Model # 3082

TPMS DIAL TIRE INFLATOR W/ STAINLESS HOSE - 0-65PSI

TWO POSITION LEVER
1st position deflates
2nd position inflates

COVERED WITH RUBBER SLEEVE for extra comfort and durability

DETAILED HIGH RESOLUTION DIAL FACE perfect for TPMS or any use where accurate readings are required

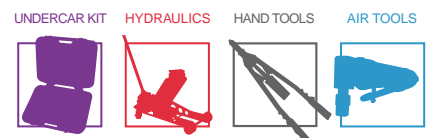
EASY CHANGE CHUCK SYSTEM

Model	Measuring Range	Resolution	Working Temperature
3082	0-65psi	1 PSI	32°F - 104°F (=0°C - 40°C)
Accuracy			
+/- <1psi			

EXTREME ACCURACY.
UP TO 260% MORE ACCURATE THAN THE ANSI STANDARD



SHOP EQUIPMENT





**Astro Pneumatic
Tool Company**

Model:

3082

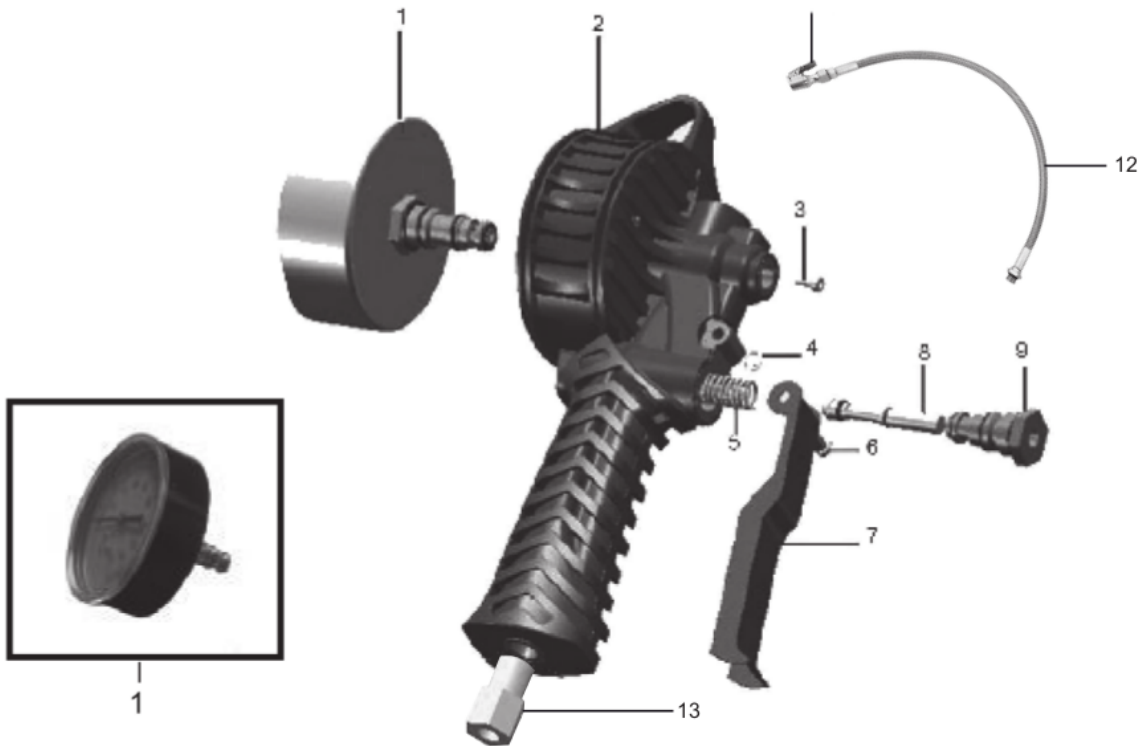
Product Type:

**TPMS DIAL TIRE INFLATOR
W/ STAINLESS HOSE - 0-65PSI**

OPERATING INSTRUCTION:

1. Remove tire valve cap.
2. With clip-on air chuck lever depressed, firmly press chuck onto tire valve stem and release lever, ensure that no air leaks.
3. Press the grip to inflate, press the grip half-way to deflate.
4. Measuring Range: 0-65psi, Reading Range: 2-65psi

PARTS BREAKDOWN



Parts List

Index No.	Part No.	Description	Qty
1	3082-01	Analogue Gauge Assembly	1
2	3082-02	Main Body	1
3	3082-03	Hex Screw Ø3,5*8	1
4	3082-04	Circlip Ø3,5	2
5	3082-05	Spring 0,85*7,0 / 8,0 *18,5*7	1
6	3082-06	Lever Pin	1
7	3082-07	Lever	1
8	3082-08	Valve Assembly	1
9	3082-09	Valve Base Assembly	1
11	3018-17	Air Chuck	1
12	3018-16S	Stainless Steel Hose	1
13	3082-13	Air Inlet	1
11+12	3018HSS	Stainless Hose with Air Chuck	