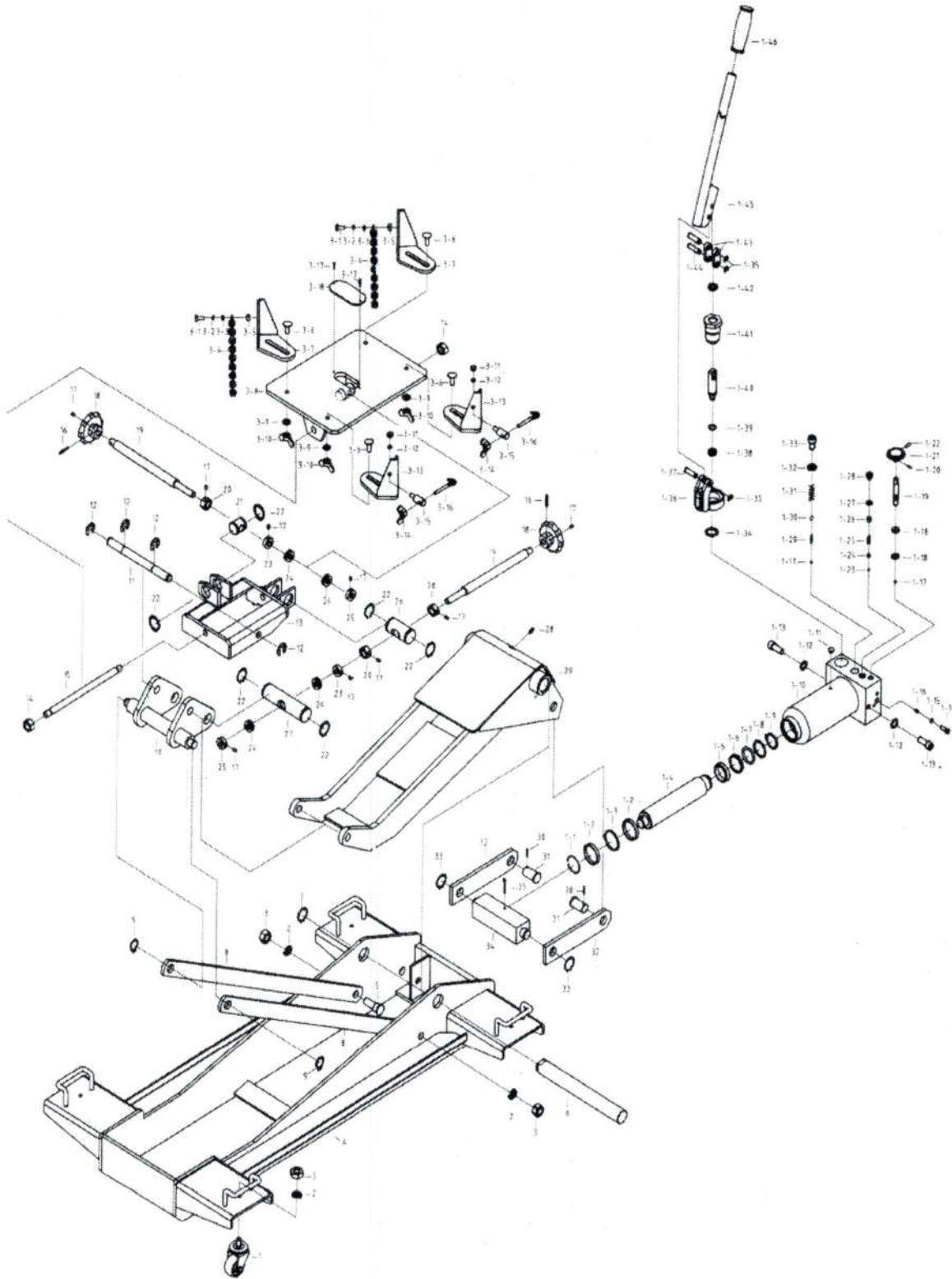


PARTS BREAKDOWN



Parts List

Index	Part No.	Description	Qty
1	1500EX-1	Caster Ass'y	4
2	1500EX-2	Washer	6
3	1500EX-3	Nut	6
4	1500EX-4	Frame Board Ass'y	1
5	1500EX-5	Bolt	2
6	1500EX-6	Shaft	1
7	1500EX-7	Washer	1
8	1500EX-8	Rod Link	2
9	1500EX-9	Washer	2
10	1500EX-10	Saddle Seat	1
11	1500EX-11	Shaft	1
12	1500EX-12	Washer	4
13	1500EX-13	Bracket	1
14	1500EX-14	Nut	2
15	1500EX-15	Shaft	1
16	1500EX-16	Pin	2
17	1500EX-17	Bolt	9
18	1500EX-18	Handwheel	2
19	1500EX-19	Screw	2
20	1500EX-20	Nut	3
21	1500EX-21	Shaft	1
22	1500EX-22	Washer	6
23	1500EX-23	Nut	2
24	1500EX-24	Bearing	4
25	1500EX-25	Nut	2
26	1500EX-26	Shaft	1
27	1500EX-27	Shaft	1
28	1500EX-28	Grease Fitting	1
29	1500EX-29	Lift Arm Ass'y	1
30	1500EX-30	Pin	2
31	1500EX-31	Shaft	2
32	1500EX-32	Rod Link	2
33	1500EX-33	Washer	2
34	1500EX-34	Rod Link	1
35	1500EX-35	Pin	1
1-1	1500EX-1-1	Washer	1
1-2	1500EX-1-2	Washer	2
1-3	1500EX-1-3	O-Ring	1
1-4	1500EX-1-4	Piston Rod	1
1-5	1500EX-1-5	Piston Ring	1
1-6	1500EX-1-6	Sealing Washer	1
1-7	1500EX-1-7	O-Ring	1
1-8	1500EX-1-8	Washer	1
1-9	1500EX-1-9	Washer	1
1-10	1500EX-1-10	Body	1
1-11	1500EX-1-11	Oil Filter Plug	1
1-12	1500EX-1-12	Washer	2
1-13	1500EX-1-13	Bolt	2
1-14	1500EX-1-14	Bolt	1
1-15	1500EX-1-15	Copper Washer	1

Index	Part No.	Description	Qty
1-16	1500EX-1-16	Valve	1
1-17	1500EX-1-17	Steel Ball Ø6	2
1-18	1500EX-1-18	O-Ring	2
1-19	1500EX-1-19	Release Valve Rod	1
1-20	1500EX-1-20	Pin	1
1-21	1500EX-1-21	Release Nob	1
1-22	1500EX-1-22	Screw	1
1-23	1500EX-1-23	Steel Ball Ø4	1
1-24	1500EX-1-24	Ball Seat	1
1-25	1500EX-1-25	Spring	1
1-26	1500EX-1-26	Screw	1
1-27	1500EX-1-27	Sealing Washer	1
1-28	1500EX-1-28	Screw	1
1-29	1500EX-1-29	Spring	1
1-30	1500EX-1-30	Steel Ball Ø9	1
1-31	1500EX-1-31	Spring	1
1-32	1500EX-1-32	Copper Washer	1
1-33	1500EX-1-33	Screw	1
1-34	1500EX-1-34	Copper Washer	1
1-35	1500EX-1-35	Washer	3
1-36	1500EX-1-36	Bracket	1
1-37	1500EX-1-37	Pin	1
1-38	1500EX-1-38	Y-Ring	1
1-39	1500EX-1-39	O-Ring	1
1-40	1500EX-1-40	Cylinder Pump	1
1-41	1500EX-1-41	Pump Cylinder	1
1-42	1500EX-1-42	Dustproof Plug	1
1-43	1500EX-1-43	Washer	2
1-44	1500EX-1-44	Pin	2
1-45	1500EX-1-45	Handle	1
1-46	1500EX-1-46	Handle Sleeve	1
3-1	1500EX-3-1	Bolt	2
3-2	1500EX-3-2	Washer	2
3-3	1500EX-3-3	Washer	2
3-4	1500EX-3-4	Chain	2
3-5	1500EX-3-5	Nut	2
3-6	1500EX-3-6	Bolt	4
3-7	1500EX-3-7	Bracket	2
3-8	1500EX-3-8	Bracket	1
3-9	1500EX-3-9	Washer	4
3-10	1500EX-3-10	Nut	4
3-11	1500EX-3-11	Nut	2
3-12	1500EX-3-12	Washer	2
3-13	1500EX-3-13	Bracket	2
3-14	1500EX-3-14	Nut	2
3-15	1500EX-3-15	Bolt	2
3-16	1500EX-3-16	Hook	2
3-17	1500EX-3-17	Bolt	2
3-18	1500EX-3-18	Board	1