



ARTEC INDUSTRIES JL FRONT INNER FENDERS

Thank you for your purchase of our JL front inner fenders.

Bill Of Materials

| ITEM NO | PART NUMBER | DESCRIPTION | QTY. |
|---------|-------------|--|------|
| 1 | JL51xx-3 | JL Front Inner Fender Driver Support Bracket | 1 |
| 2 | JL51xx-6 | JL Front Inner Fender Passenger Support Bracket | 1 |
| 3 | JL51xx-4 | JL Passenger Front Inner Fender Front Panel | 1 |
| 4 | JL51xx-5 | JL Passenger Front Inner Fender Rear Panel | 1 |
| 5 | JL51xx-1 | JL Driver Front Inner Fender Front Panel | 1 |
| 6 | JL51xx-2 | JL Driver Front Inner Fender Rear Panel | 1 |
| 7 | JL51xx-7 | JL FRONT INNER FENDERS FLAG NUT | 1 |
| 8 | HW0074 | 1/4"-20 Zinc Coated Steel Press Nut 0.047" Panel Thickness | 9 |
| 9 | TC0011 | Rivet Nut Tool | 1 |
| 10 | HK5106 | Hardware Assembly | 1 |

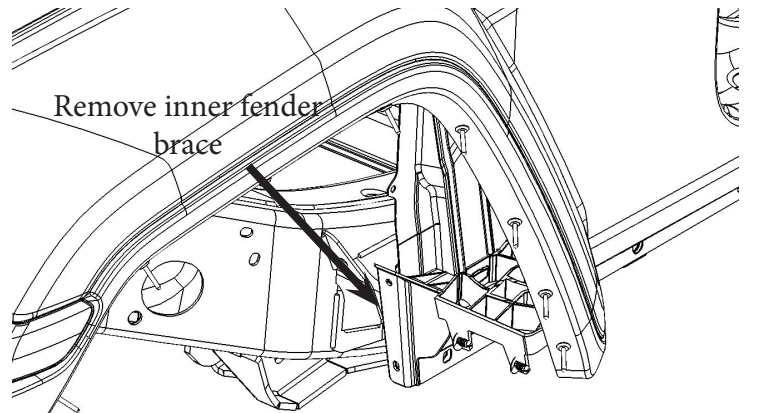


REQUIRED TOOLS

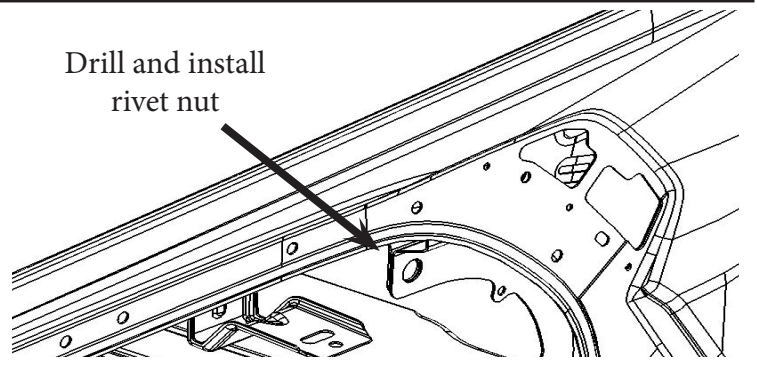
- 9/16" Wrench
- Center Punch
- Metric Socket Set
- 11/32" drill bit
- 5/32" Allen

STEP 1. Unpack contents of shipment. Make sure that all of the parts required are included with your kit. If any items are missing, and packaging is damaged, report it to the shipping company driver, **KEEP ALL ORIGINAL PACKAGING.**

STEP 2. First start by parking the vehicle on level ground and apply the parking brake. These inner fenders are designed to work with most after market fender flares, including the factory fender flares. Depending on the style of factory fenders that are on your jeep start by removing the factory inner fenders. We will be installing aftermarket fenders on our jeep but for now we are going to use and the fenders that came on it to get us by. Ensure you remove the rear plastic inner fender bracket as well to make room for the new inner fenders.

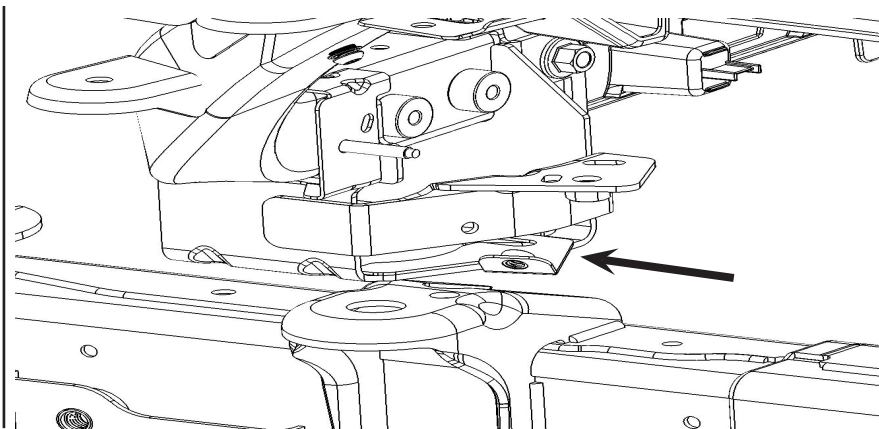


STEP 3. The inner fender requires that you install rivet nuts to fasten it to the vehicle. Starting on the driver side drill the upper mounting hole and install the rivet nut using the tool we have provided. You can now install the back portion of your inner fender, the middle hole is for the plastic wiring loom barbed clip, the bottom hole uses a nut on the back side. Leave the top bolt loose so that the front portion of the inner fender can be slid into place in the following steps.

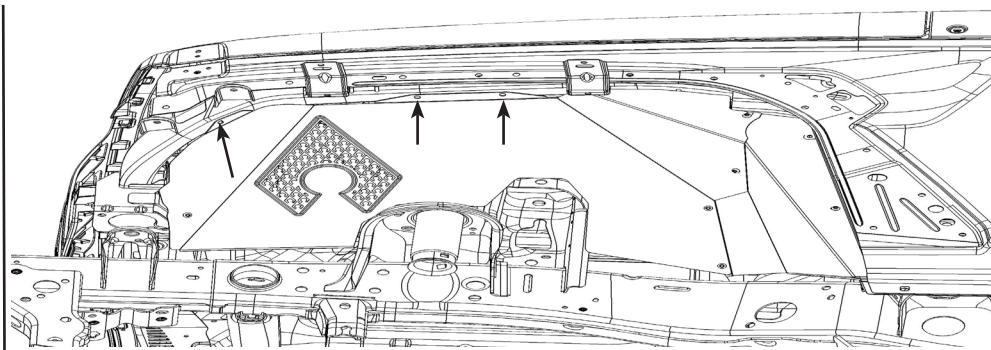


NOTE: THIS KIT INVOLVES VEHICLE MODIFICATION AND MECHANICAL SKILLS. IF YOU ARE NOT CONFIDENT IN YOUR SKILLS, CONTACT A PROFESSIONAL INSTALLER.

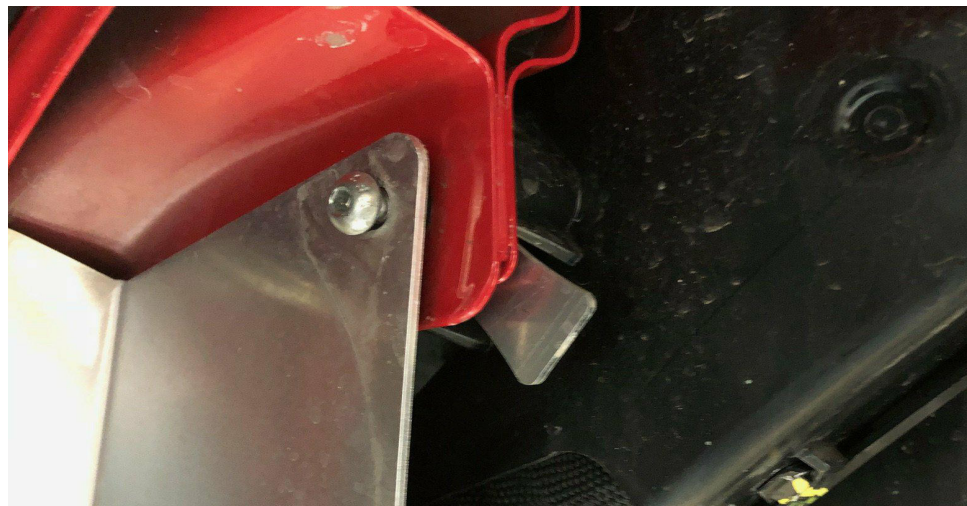
STEP 4. Now that you have the rear portion of the fender loosely installed, next is to install the front mounting bracket (JL51xx-3 (Driver Bracket))/ JL51xx-6 (Passenger Bracket)). The bracket utilizes the front body mount. Simply loosen the body mount bolt enough to slide the bracket in. Slide the bracket until it rests on the body mount, tighten the body mount bolt back down. The same procedure can be used on the passenger side of the vehicle as well.



STEP 5. Now the front portion of the inner fender can be installed loosely. Install the three mounting bolts to connect the two pieces and install the front bolt in the front mounting bracket you just installed. Now you can mark the remaining three mounting holes. Drill and install rivet nuts.



STEP 6. Once you have installed the rivet nut perform the final install on the driver inner fender and ensure fitment. The following steps can be used for the passenger side of the vehicle besides one difference. We have included a flag nut that is installed into the plastic wiring harness case. This is used to fasten the rear upper mounting location. Simply remove the barbed plastic clip that is in the case and instead install the provided flag nut.



STEP 7. If your installing the trim to fit fenders ensure there is proper clearance around all aftermarket suspension brackets. Prior to final install we recommend that the inner fenders be painted, or powdercoated. Some also choose to wrap them in vinyl. The fenders are raw aluminum and will corrode over time. Perform the final install and use blue thread locker on all the fasteners to ensure they do not vibrate loose over time.

**Artec Industries, LLC is not responsible or liable for improper installation of this kit. Use common sense when installing.

NOTE: THIS KIT INVOLVES VEHICLE MODIFICATION AND MECHANICAL SKILLS. IF YOU ARE NOT CONFIDENT IN YOUR SKILLS, CONTACT A PROFESSIONAL INSTALLER.