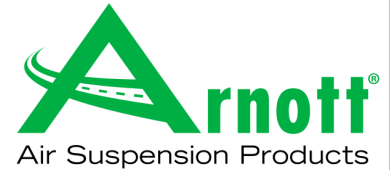


# Installation Manual

SK-2459  
ARNOTT REMANUFACTURED  
FRONT LEFT ABC STRUT FOR  
2002-2006 MERCEDES-BENZ S-CLASS (AMG)  
2002-2006 MERCEDES-BENZ CL-CLASS (AMG)



Congratulations on your purchase of an Arnott® air suspension product. We at Arnott Incorporated are proud to offer a high quality product at the industry's most competitive pricing. Thank you for your confidence in us and our product.

Proper installation is essential to experience and appreciate the benefits of this system. Please take a moment to review these installation instructions before you begin to install these components on your vehicle. The removal and installation of air suspension products should only be performed by a fully qualified, ASE Certified, professional.

It is equally important to be aware of all necessary safety measures while installing your new Air Suspension System. This includes proper lifting and immobilizing of the vehicle and isolation of any stored energy to prevent personal injury or property damage.

## "Engineered to Ride, Built to Last™"



**WARNING:** The hydraulic suspension system is under pressure (in excess of 200 bar, or 2900 PSI). Depressurize the hydraulic system completely before starting any work. Wear protective clothing and eye protection. When disengaging hydraulic lines without first depressurizing the system, dangerous skin or eye injuries may occur.

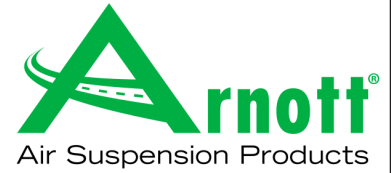
### KIT CONTAINS:

#### PARTS LIST

P/N	QTY	DESCRIPTION
21-7291	1	ARNOTT REMANUFACTURED FRONT LEFT ABC STRUT
21-7292	1	ACCESSORY KIT

# Installation Manual

SK-2459  
ARNOTT REMANUFACTURED  
FRONT LEFT ABC STRUT FOR  
2002-2006 MERCEDES-BENZ S-CLASS (AMG)  
2002-2006 MERCEDES-BENZ CL-CLASS (AMG)



## GENERAL INFORMATION:

- Not to be stored below 5°F (-15°C) and above 122°F (50°C).
- Avoid damage to hydraulic lines and cables.
- Removal and installation is only to be performed by fully qualified personnel.
- Use car manufacturer's diagnostic software.

**CAUTION:** *Work is to be performed by a factory trained mechanic; failure to do so may cause damage to the vehicle. diagnostic software is required to re-pressurize the hydraulic system after strut installation.*



*To avoid the possibility of short circuits while working with electric components consult your owner's manual on how to disconnect your battery.*



*Consult your vehicles owner's manual, service manual, or car dealer for the correct jacking points on your vehicle and for additional care, safety and maintenance instructions. Under no circumstances should any work be completed underneath the vehicle if it is not adequately supported, as serious injuries and death can occur.*

## ABC STRUT REMOVAL

1. SET STEERING TO STRAIGHT AHEAD.
2. RAISE VEHICLE.
3. REMOVE FRONT WHEEL.
4. REMOVE THE FRONT BUMPER SHROUD. (FIGURE A)

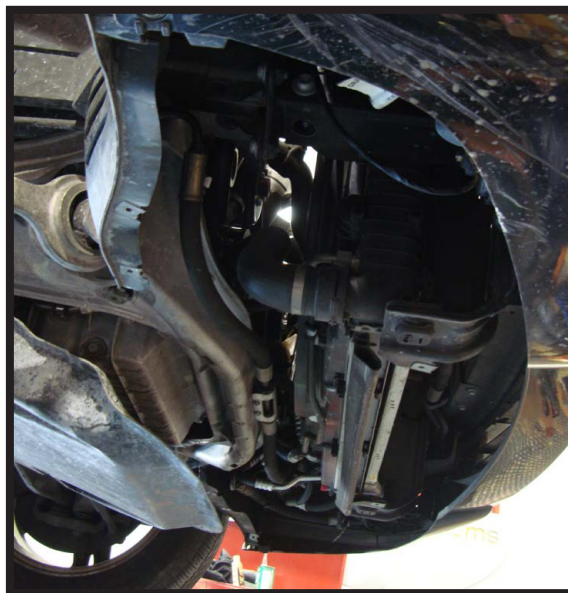


FIGURE A

5. BLEED OFF HYDRAULIC PRESSURE. OPEN BLEED SCREW CAREFULLY SO THAT THE HYDRAULIC FLUID CAN DRAIN OUT SLOWLY TO PREVENT THE STRUT FROM COLLAPSING TOO RAPIDLY. (FIGURE B)

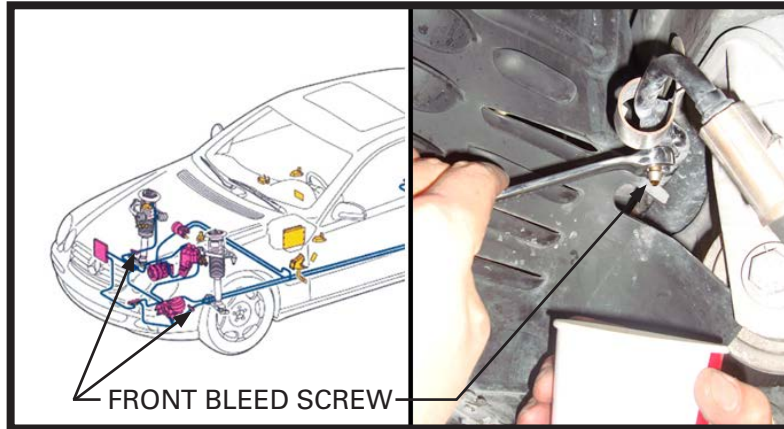


FIGURE B

6. DISCONNECT THE BRACKET HOLDING HYDRAULIC LINE TO THE FRAME. (FIGURE C)

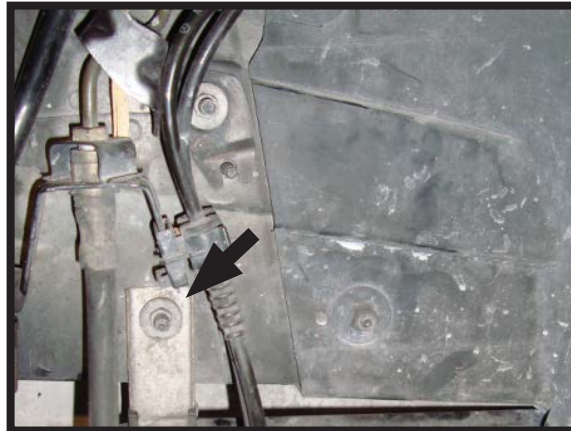


FIGURE C

7. DISCONNECT THE HYDRAULIC LINE QUICK-RELEASE COUPLING FROM THE SHOCK (ENSURE THAT NO DIRT ENTERS THE OPENED QUICK-RELEASE FITTING). (FIGURE D)



FIGURE D

8. LOOSEN THE TWO (2) SET SCREWS (180° APART) LOCATED ON THE BOTTOM OF THE SHOCK ASSEMBLY. (FIGURE E)



FIGURE E

9. RAISE THE HOOD AND DISCONNECT THE ELECTRICAL CONNECTOR. (FIGURE F)

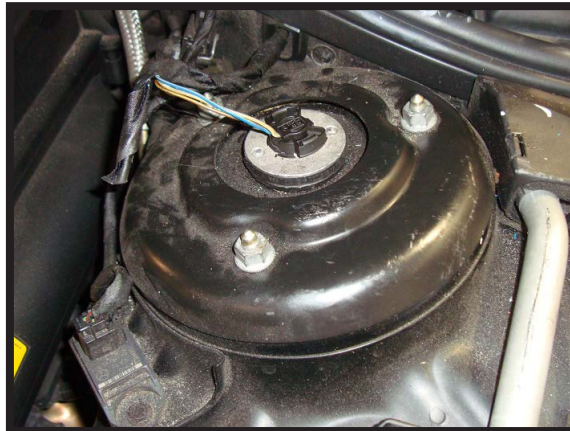


FIGURE F

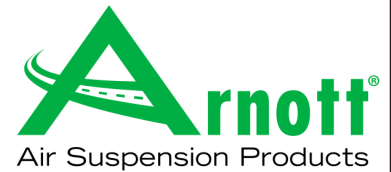
10. REMOVE THE THREE (3) NUTS HOLDING THE SHOCK TOP MOUNT TO THE VEHICLE. (FIGURE F)



FIGURE F




# Installation Manual

**SK-2459**  
**ARNOTT REMANUFACTURED**  
**FRONT LEFT ABC STRUT FOR**  
**2002-2006 MERCEDES-BENZ S-CLASS (AMG)**  
**2002-2006 MERCEDES-BENZ CL-CLASS (AMG)**



11. REMOVE STRUT.
12. REMOVAL COMPLETE.

## ABC STRUT INSTALLATION

-  *Tighten all nuts and bolts to manufacturer's specifications during the installation process.*
-  *Please refer to your vehicle manufacturer's service manual for re-pressurizing the ABC® hydraulic suspension system.*
-  *Work is to be performed by a factory trained mechanic; failure to do so may cause damage to the vehicle. diagnostic software is required to re-pressurize the hydraulic system after strut installation.*

1. INSTALLATION IS IN REVERSE ORDER OF ABC STRUT REMOVAL.