

Installation Manual

SK-3059
ARNOTT
NEW REAR SHOCK
2010-2016 MERCEDES-BENZ E-CLASS (W212)
w/AIRMATIC, incl. 4MATIC & AMG - LT/RT

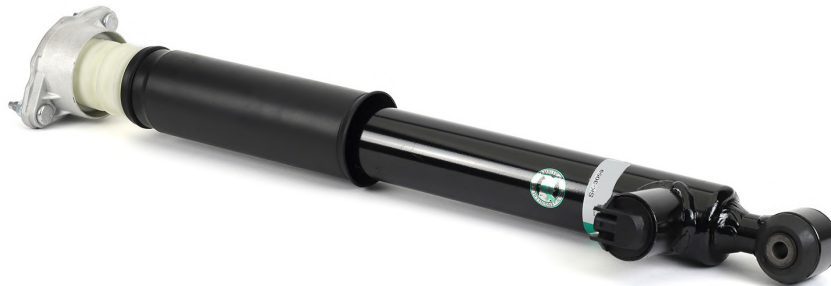


Congratulations on your purchase of an Arnett® air suspension product. We at Arnett Incorporated are proud to offer a high quality product at the industry's most competitive pricing. Thank you for your confidence in us and our product.

Proper installation is essential to experience and appreciate the benefits of this system. Please take a moment to review these installation instructions before you begin to install these components on your vehicle. The removal and installation of air suspension products should only be performed by a fully qualified, ASE Certified, professional.

It is equally important to be aware of all necessary safety measures while installing your new Air Suspension System. This includes proper lifting and immobilizing of the vehicle and isolation of any stored energy to prevent personal injury or property damage.

"Engineered to Ride, Built to Last®"



WARNING: *The air suspension system is under pressure (up to 10 bar, or 150 lbf/in). Verify pressure has been relieved and disconnect power to the air suspension system prior to disassembly. Do not allow dirt or grease to enter the system. Always wear standard hand, ear, and eye protection when servicing the air suspension system.*

Arnett® is committed to the quality of its products.

GENERAL INFORMATION:

- Not to be stored below 5°F (-15°C) and above 122°F (50°C).
- Avoid damage to air lines and cables.
- Removal and installation is only to be performed by fully qualified personnel.
- Use car manufacturer's diagnostic software.

CAUTION: *Damage to the vehicle and air suspension system can be incurred if work is carried out in a manner other than specified in the instructions or in a different sequence.*



To avoid the possibility of short circuits while working with electric components consult your owner's manual on how to disconnect your battery.



Consult your vehicle owner's manual, service manual, or car dealer for the correct jacking points on your vehicle and for additional care, safety and maintenance instructions. Under no circumstances should any work be completed underneath the vehicle if it is not adequately supported, as serious injuries and death can occur.

REAR SHOCK REMOVAL

1. REMOVE LUGGAGE COMPARTMENT PANELS TO GAIN ACCESS TO APPLICABLE SHOCK TOP MOUNT. (FIGURES 1, 2)



FIGURE 1



FIGURE 2

2. RAISE VEHICLE AND REMOVE APPLICABLE REAR WHEEL. (FIGURES 2, 3)



FIGURE 2



FIGURE 3

3. DEFLATE AIR SUSPENSION SYSTEM PER MANUFACTURER'S SPECIFICATIONS.

4. DISCONNECT ELECTRICAL CONNECTION. (FIGURE 4)



FIGURE 4

5. REMOVE BOTTOM SHOCK MOUNT BOLT. (FIGURES 5, 6)



FIGURE 5



FIGURE 6

6. REMOVE THE TWO (2) TOP SHOCK MOUNT NUTS. (FIGURES 7, 8)



FIGURE 7



FIGURE 8

7. COMPRESS SHOCK AND REMOVE FROM VEHICLE. (FIGURE 9)



FIGURE 9

8. REMOVAL COMPLETE.

REAR SHOCK INSTALLATION



Tighten all nuts and bolts to manufacturer's specifications during the installation process.

1. INSERT NEW ARNOTT SHOCK INTO VEHICLE. (FIGURE 10)



FIGURE 10

2. REINSTALL BOTTOM SHOCK MOUNT BOLT/NUT. TIGHTEN TO MANUFACTURER'S SPECIFICATIONS. (FIGURE 11)



FIGURE 11

3. INSTALL THE PROVIDED TWO (2) TOP SHOCK MOUNT NUTS. (FIGURES 12, 13)



FIGURE 12



FIGURE 13

4. CONNECT THE ELECTRICAL CONNECTION TO THE SHOCK. (FIGURE 14)



FIGURE 14

5. REINSTALL THE APPLICABLE REAR WHEEL.
6. INFLATE THE AIR SUSPENSION SYSTEM PER MANUFACTURER'S SPECIFICATIONS.
7. INSTALLATION COMPLETE.