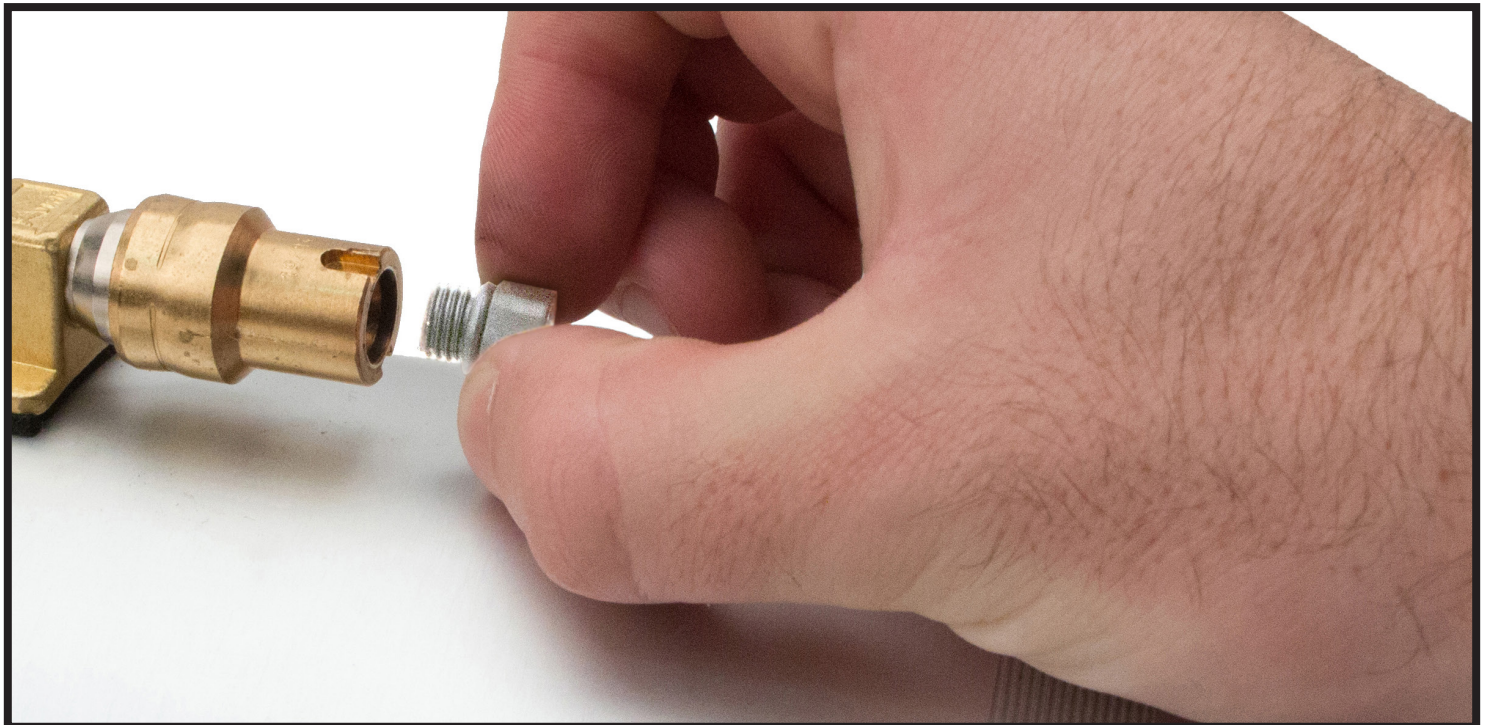


AIR LINE FITTING INSTRUCTIONS



**SEE REVERSE
SIDE**

Remove the threaded plug and discard.



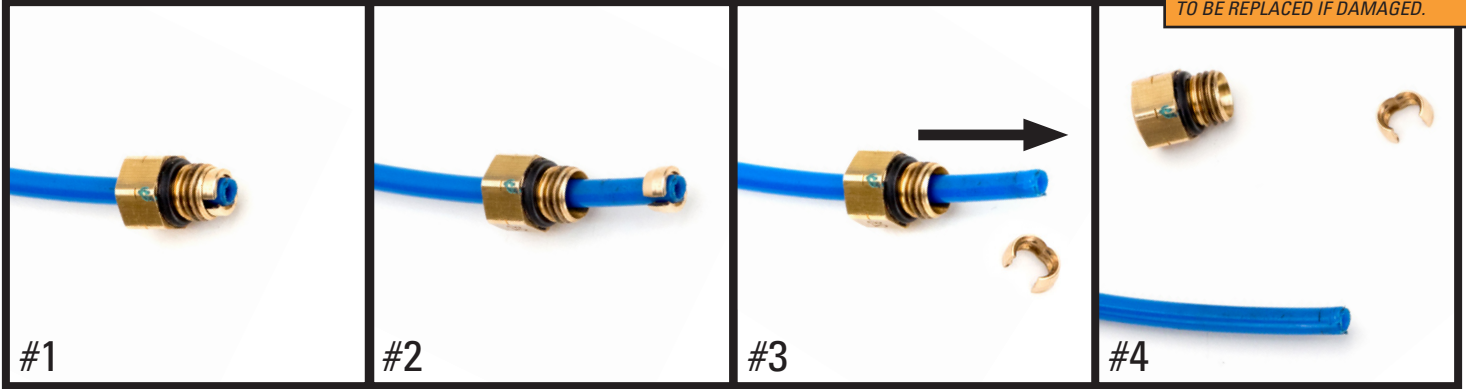
Arnott® is committed to the quality of its products. If you have a question or problem with any Arnott product, please contact Arnott by calling 800-251-8993 during normal business hours or email techassistance@arnottinc.com. (In the EU please call +31 (0)73 7850 580 or email info@arnotteurope.com)

REMOVAL



Prior to inserting the existing air line into the new air fitting you will need to remove the old original equipment air line fitting.

NOTE: SCRATCHES AND/OR DEEP CUTS IN THE AIR LINE CAN RESULT IN POSSIBLE LEAKS. INSPECT THE AIR LINE BEFORE INSERTION. AIR LINE NEEDS TO BE REPLACED IF DAMAGED.



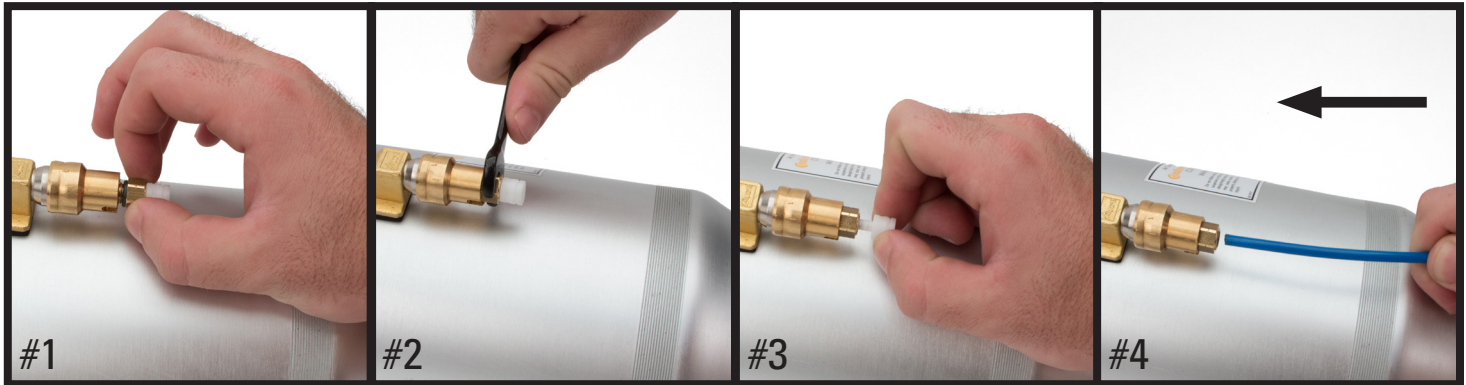
#1 OE AIR LINE FITTING

#2 SLIDE THE THREADED PORTION UP THE LINE AND SPREAD THE COLLET OPEN TO REMOVE

#3 SLIDE THE AIR FITTING OFF OF THE AIR LINE

#4 AIR LINE IS READY FOR INSTALLATION

INSTALLATION - USING THE NEW AIR LINE FITTING PROVIDED IN THE KIT

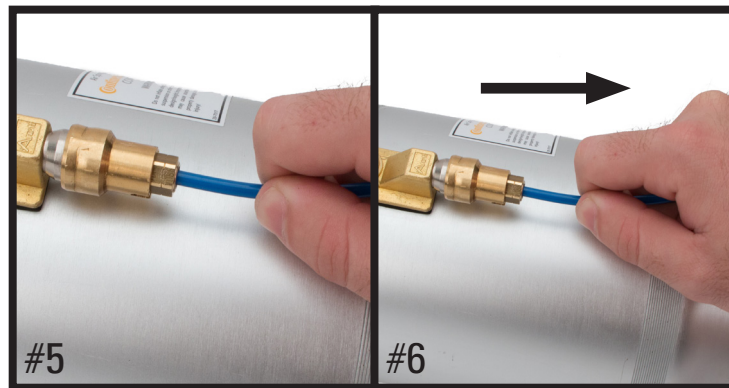


#1 THREAD THE INCLUDED AIR LINE FITTING INTO THE VALVE

#2 TIGHTEN FITTING TO APPROX. 2NM (18 IN-LBS/1.5 FT-LBS)

#3 REMOVE AND DISPOSE OF THE SHIPPING PIN

#4 INSERT AIR LINE INTO THE AIR LINE FITTING UNTIL IT STOPS



#5 AIR LINE INSERTED

#6 GENTLY PULL ON AIR LINE TO CONFIRM IT IS FULLY SECURED BY THE AIR LINE FITTING

Amott® is committed to the quality of its products. If you have a question or problem with any Amott product, please contact Amott by calling 800-251-8993 during normal business hours or email techassistance@arnottinc.com.