

Congratulations on your purchase of an Arnott® air suspension product. We at Arnott Incorporated are proud to offer a high quality product at the industry's most competitive pricing. Thank you for your confidence in us and our product.

Proper installation is essential to experience and appreciate the benefits of this system. Please take a moment to review these installation instructions before you begin to install these components on your vehicle. The removal and installation of air suspension products should only be performed by a fully qualified, ASE Certified, professional.

It is equally important to be aware of all necessary safety measures while installing your new Air Suspension System. This includes proper lifting and immobilizing of the vehicle and isolation of any stored energy to prevent personal injury or property damage.

## "Engineered to Ride, Built to Last®"



**WARNING:** *The air suspension system is under pressure (up to 10 bar, or 150 lbf/in). Verify pressure has been relieved and disconnect power to the air suspension system prior to disassembly. Do not allow dirt or grease to enter the system. Always wear standard hand, ear, and eye protection when servicing the air suspension system.*

## GENERAL INFORMATION:

*Reading this manual signifies your agreement to the terms of the general release, waiver of liability, and hold harmless agreement, the full text of which.*

- Not to be stored below 5°F (-15°C) or above 122°F (50°C).
- Avoid damage to air lines and cables.
- Removal and installation is only to be performed by fully qualified personnel.
- Use car manufacturer's diagnostic software.

**CAUTION:** *Damage to the vehicle and air suspension system can be incurred if work is carried out in a manner other than specified in the instructions or in a different sequence.*



*To avoid the possibility of short circuits while working with electric components consult your owner's manual on how to disconnect your battery.*



*Consult your vehicle owner's manual, service manual, or car dealer for the correct jacking points on your vehicle and for additional care, safety and maintenance instructions. Under no circumstances should any work be completed underneath the vehicle if it is not adequately supported, as serious injuries and death can occur.*



*This vehicle contains a "Closed Air Supply System". Replacement of components requires proper adherence to procedures set forth within OE servicing literature. Failure to comply with the OE prescribed procedures can result in component damage and/or failure.*

## **DISCLAIMER:**

THE PRODUCT SHOWN IN THE INSTALLATION STEPS BELOW MAY LOOK DIFFERENT THAN THE PART YOU ARE INSTALLING. THE INSTALLATION STEPS ARE THE SAME (UNLESS OTHERWISE NOTED) AND ALL NOTICES AND WARNINGS SHOULD BE ADHERED TO IN THE SAME MANNER.

## AIR STRUT REMOVAL

1. SET STEERING TO STRAIGHT AHEAD.
2. RAISE VEHICLE.
3. REMOVE FRONT WHEEL. (FIGURE 1)



FIGURE 1

4. REMOVE THE AIR LINE FROM THE AIR STRUT. (FIGURES 2,3)



FIGURE 2



FIGURE 3

5. REMOVE THE THREE (3) TOP MOUNT NUTS FROM THE AIR STRUT. (FIGURE 4)

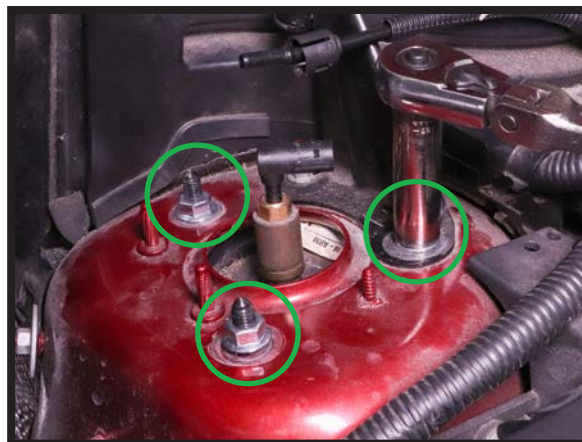


FIGURE 4

6. REMOVE THE SPEED SENSOR. (FIGURES 5, 6)



FIGURE 5



FIGURE 6



7. CLEAR SPEED SENSOR WIRE FROM BRAKE LINE PATH. (FIGURE 7)



FIGURE 7

8. REMOVE BRAKE CALIPER RETENTION CLIP. (FIGURE 8)



FIGURE 8

9. REMOVE BOTH (2) BRAKE CALIPER MOUNTING BOLTS. (FIGURES 9, 10)



FIGURE 9



FIGURE 10

10. ZIP TIE BRAKE CALIPER TO THE FRAME OUT OF THE WAY SO IT DOES NOT DAMAGE BRAKE LINE. (FIGURE 11)



FIGURE 11

11. DISCONNECT SWAY BAR END LINK FROM THE SHOCK ABSORBER (NOT PICTURED) AND SEPARATE. (FIGURES 12, 13)

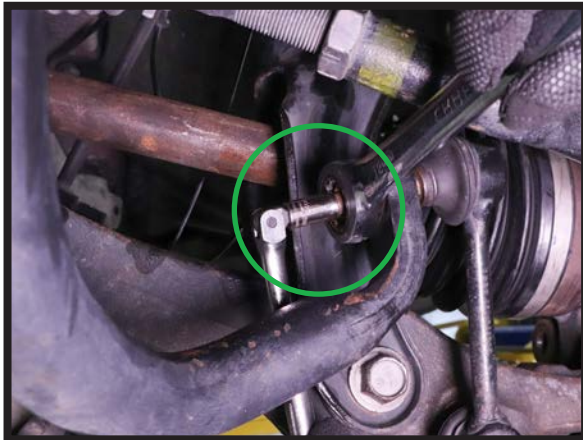


FIGURE 12



FIGURE 13

12. DISCONNECT TIE ROD AND SEPARATE. (FIGURES 14, 15)



FIGURE 14



FIGURE 15



13. DISCONNECT TOP CONTROL ARM NUT AND SEPARATE FROM SPINDLE ASSEMBLY (FIGURES 16, 17)



FIGURE 16



FIGURE 17

14. REMOVE BOTTOM STRUT MOUNTING NUT AND BOLT. (FIGURES 18, 19, 20, 21)

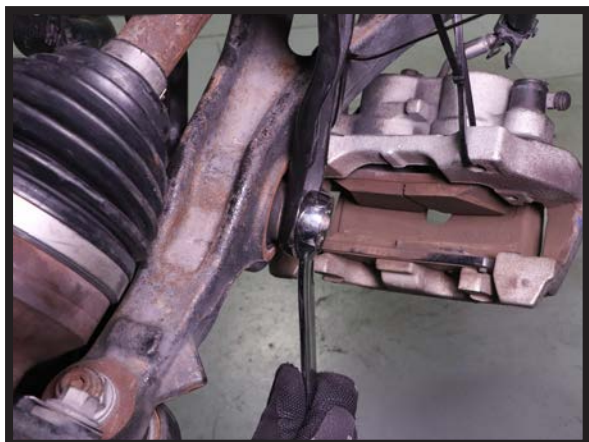


FIGURE 18

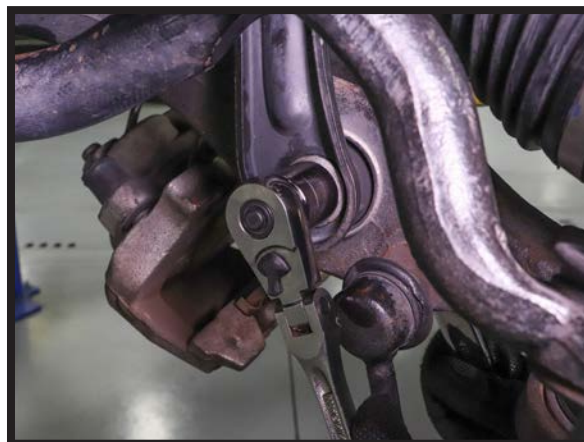


FIGURE 19

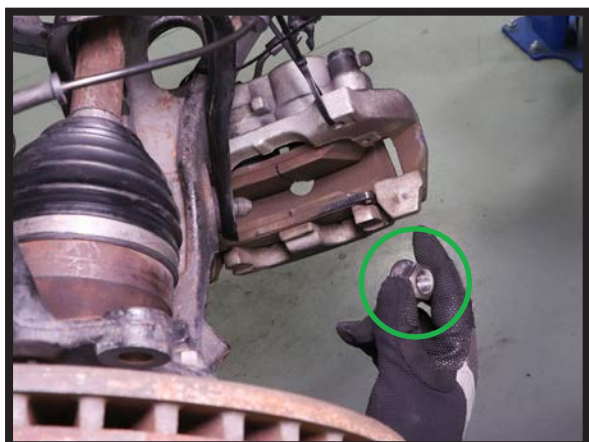


FIGURE 20

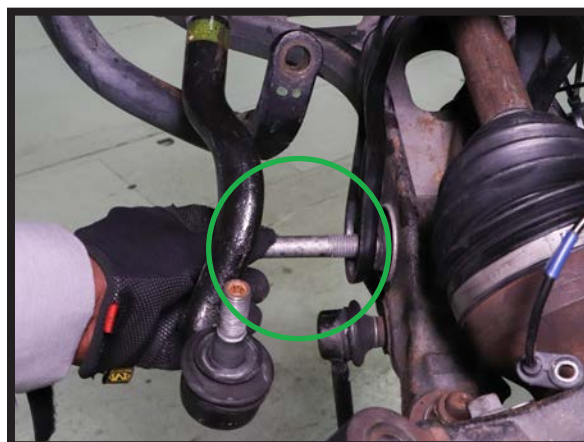


FIGURE 21

15. REMOVE AIR STRUT FROM VEHICLE. (FIGURE 22)



FIGURE 22

16. REMOVAL COMPLETE.

## AIR STRUT INSTALLATION



*Tighten all nuts and bolts to manufacturer's specifications during the installation process.*

1. INSTALL THE AIR FITTING FROM THE PROVIDED ACCESSORY KIT ON TO THE AIR STRUT AND SNUG TIGHT WITH A WRENCH. (FIGURES 23, 24)

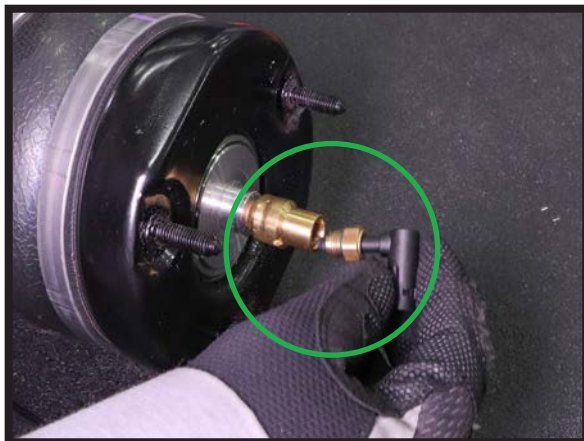


FIGURE 23



FIGURE 24



2. INSTALL THE NEW AIR STRUT INTO THE VEHICLE. (FIGURE 25)



FIGURE 25

3. REINSTALL BOTTOM STRUT MOUNTING BOLT AND NUT AND TIGHTEN TO MANUFACTURER'S SPECIFICATIONS. (FIGURES 26, 27)



FIGURE 26



FIGURE 27

4. RECONNECT TOP CONTROL ARM AND SPINDLE AND TIGHTEN NUT TO MANUFACTURER'S SPECIFICATIONS USING A JACK TO RAISE AND SUPPORT THE AXLE IS RECOMMENDED. (FIGURES 28, 29)



FIGURE 28



FIGURE 29



5. RECONNECT THE TIE ROD AND TIGHTEN TO MANUFACTURER'S SPECIFICATIONS. (FIGURE 30)



FIGURE 30

6. RECONNECT SWAY BAR END LINK TO THE SHOCK ABSORBER (NOT PICTURED) AND TIGHTEN TO MANUFACTURER'S SPECIFICATIONS. (FIGURES 31, 32)



FIGURE 31



FIGURE 32

7. CUT THE ZIP TIES HOLDING THE BRAKE CALIPER TO THE FRAME AND REINSTALL CALIPER, TIGHTENING BOLTS TO MANUFACTURER'S SPECIFICATIONS. THEN REINSTALL CALIPER RETAINING CLIP. (FIGURES 33, 34)

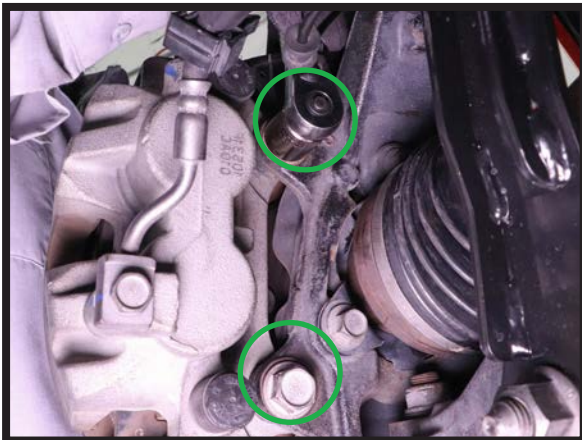


FIGURE 33



FIGURE 34

8. REINSTALL SPEED SENSOR AND TIGHTEN TO MANUFACTURER'S SPECIFICATIONS. REROUTE THE SPEED SENSOR WIRE ALONG THE BRAKE LINE PATH, CLIPPING THEM SECURELY. (FIGURES 35, 36, 37)



FIGURE 35



FIGURE 36



FIGURE 37

9. REINSTALL THE THREE (3) TOP MOUNT NUTS AND TIGHTEN TO MANUFACTURER'S SPECIFICATIONS. (FIGURE 38)



FIGURE 38



10. RECONNECT THE AIR LINE TO THE AIR STRUT. (FIGURES 39, 40)

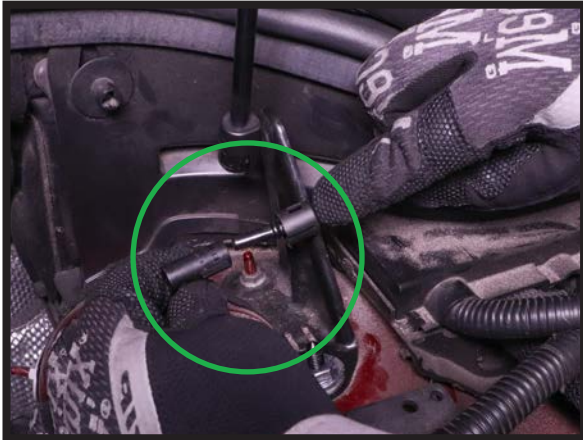


FIGURE 39

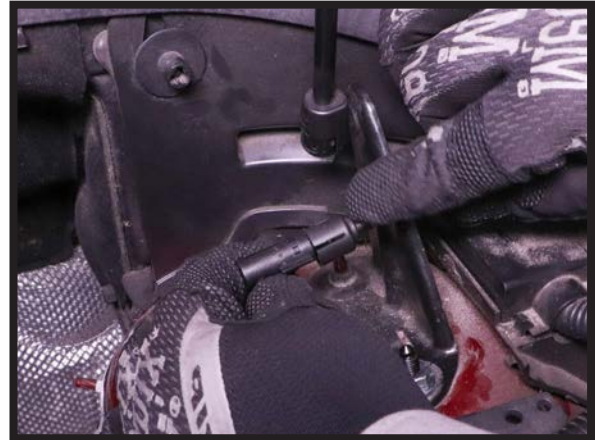


FIGURE 40

11. REINSTALL THE WHEEL.  
12. LOWER THE VEHICLE.  
13. INSTALLATION COMPLETE.