

Congratulations on your purchase of an Arnott® air suspension product. We at Arnott Incorporated are proud to offer a high quality product at the industry's most competitive pricing. Thank you for your confidence in us and our product.

Proper installation is essential to experience and appreciate the benefits of this system. Please take a moment to review these installation instructions before you begin to install these components on your vehicle. The removal and installation of air suspension products should only be performed by a fully qualified, ASE Certified, professional.

It is equally important to be aware of all necessary safety measures while installing your new Air Suspension System. This includes proper lifting and immobilizing of the vehicle and isolation of any stored energy to prevent personal injury or property damage.

**"Engineered to Ride, Built to Last®"**



**WARNING:** *The air suspension system is under pressure (up to 10 bar, or 150 lbf/in). Verify pressure has been relieved and disconnect power to the air suspension system prior to disassembly. Do not allow dirt or grease to enter the system. Always wear standard protective hand, ear, and eye protection when servicing the air suspension system.*

## GENERAL INFORMATION:

*Reading this manual signifies your agreement to the terms of the general release, waiver of liability, and hold harmless agreement.*

- Not to be stored below 5°F (-15°C) and above 122°F (50°C).
- Avoid damage to air lines and cables.
- Removal and installation is only to be performed by fully qualified personnel.
- Use car manufacturer's diagnostic software.

**CAUTION:** *Damage to the vehicle and air suspension system can be incurred if work is carried out in a manner other than specified in the instructions or in a different sequence.*



*To avoid the possibility of short circuits while working with electric components consult your owner's manual on how to disconnect your battery.*



*Consult your vehicle owner's manual, service manual, or car dealer for the correct jacking points on your vehicle and for additional care, safety and maintenance instructions. Under no circumstances should any work be completed underneath the vehicle if it is not adequately supported, as serious injuries and death can occur.*

## AIR STRUT REMOVAL

1. SET STEERING TO STRAIGHT AHEAD.
2. LOOSEN AND REMOVE THE THREE (3) TOP BOLTS UNDER THE HOOD. (FIGURE 1)

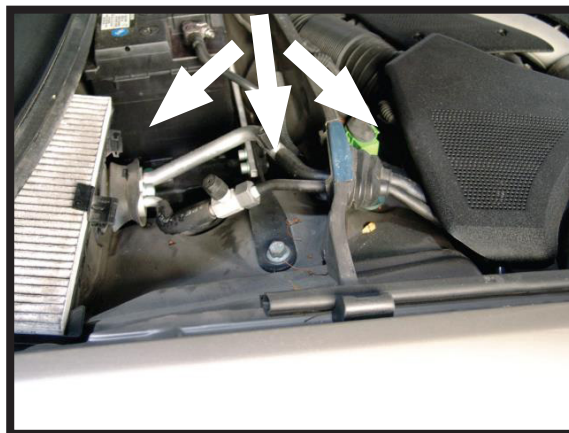


FIGURE 1

3. RAISE THE VEHICLE.
4. REMOVE THE FRONT WHEEL.

5. REMOVE THE PINCH BOLT FROM THE FRONT OF THE CONTROL ARMS. (FIGURE 2)

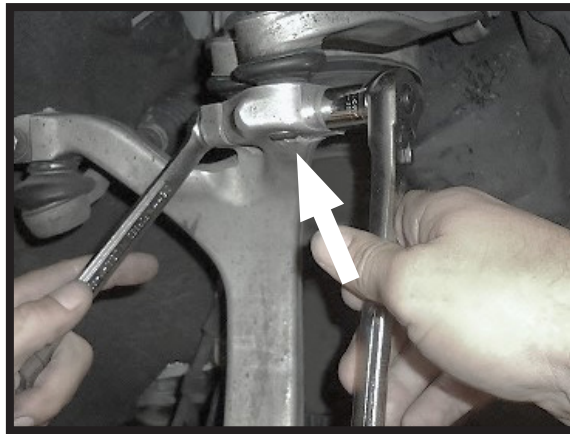


FIGURE 2

6. REMOVE BOTH BALL JOINTS FROM THE FRONT SUSPENSION LINK. (FIGURE 3)

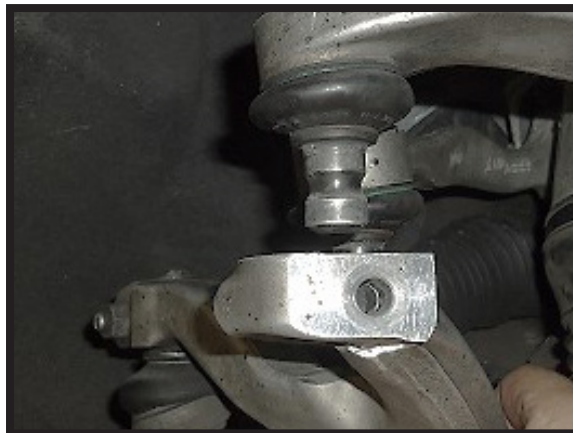


FIGURE 3

7. REMOVE THE REMAINING AIR PRESSURE FROM THE FRONT AIR STRUT. TO DEFLATE THE AIR STRUT, CAREFULLY REMOVE THE AIR FITTING FROM THE TOP OF THE AIR STRUT. REMOVE THE AIR LINE FITTING FROM THE AIR LINE AND DISCARD. (FIGURE 4)

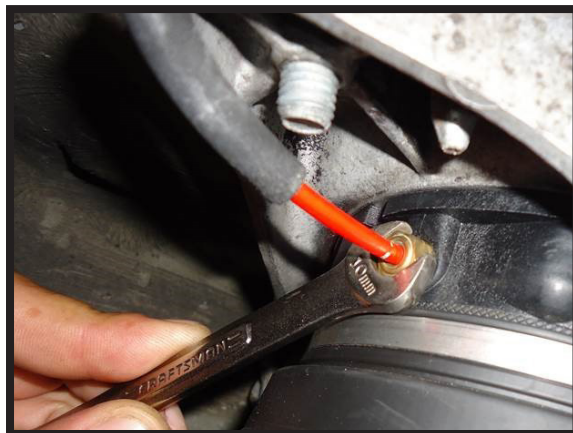


FIGURE 4

8. LOOSEN AND REMOVE THE LOWER SHOCK BOLT. (FIGURE 5)

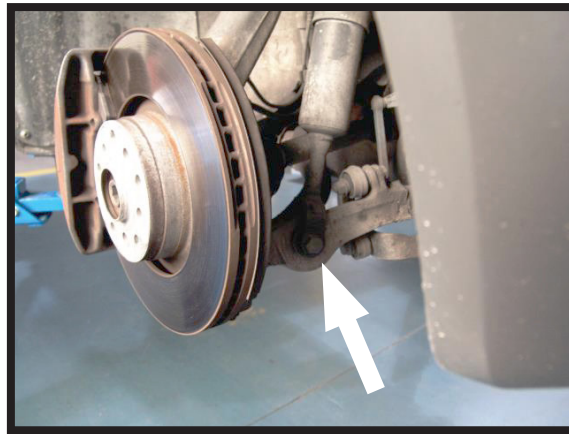


FIGURE 5

9. CAREFULLY REMOVE THE SHOCK ASSEMBLY FROM THE VEHICLE. (FIGURE 6)



FIGURE 6

10. USING A 12 POINT TORX BIT, REMOVE THE 6 UPPER SHOCK MOUNTING BOLTS. REMOVE THE TOP CAST ALUMINUM SHOCK CAP. (FIGURES 7, 8)

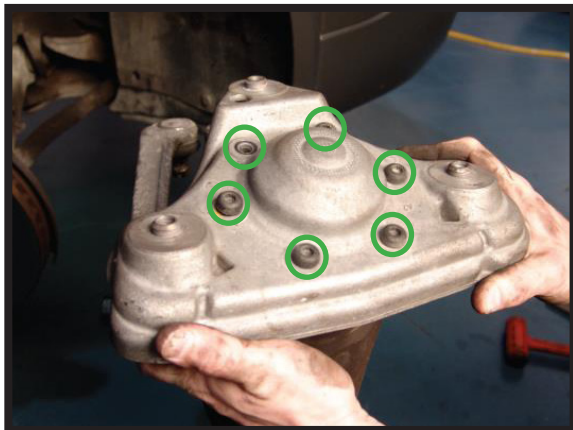


FIGURE 7



FIGURE 8

## AIR STRUT PREPARATION



*Tighten all nuts and bolts to manufacturer's specifications during the installation process.*



*Do not remove the air fitting from the air spring. Doing so may cause damage and/or void warranty. Remove the white shipping pin from the new air fitting and insert the air line until fully seated.*

1. REMOVE THE NEW O-RING FROM BAG AND LUBRICATE. INSTALL NEW O-RING INTO THE FACE GROOVE LOCATED ON THE TOP SIDE OF THE AIR STRUT. (FIGURE 9)



FIGURE 9

2. REPLACE THE CAST ALUMINUM SHOCK CAP AND INSTALL THE BOLTS PROVIDED IN THE KIT. (FIGURE 10)



FIGURE 10

## AIR STRUT INSTALLATION



*Tighten all nuts and bolts to manufacturer's specifications during the installation process.*

1. INSTALL THE SHOCK ASSEMBLY ONTO THE VEHICLE. (FIGURE 11)



FIGURE 11

2. INSTALL THE LOWER SHOCK BOLT AND NUT. (FIGURE 12)



FIGURE 12

3. CONNECT BOTH BALL JOINTS TO THE FRONT SUSPENSION LINK. INSTALL THE PINCH BOLT AND NUT TO THE FRONT OF THE CONTROL ARMS. (FIGURE 13)



FIGURE 13

4. REPLACE THE THREE (3) TOP BOLTS UNDER THE HOOD. (FIGURE 14)

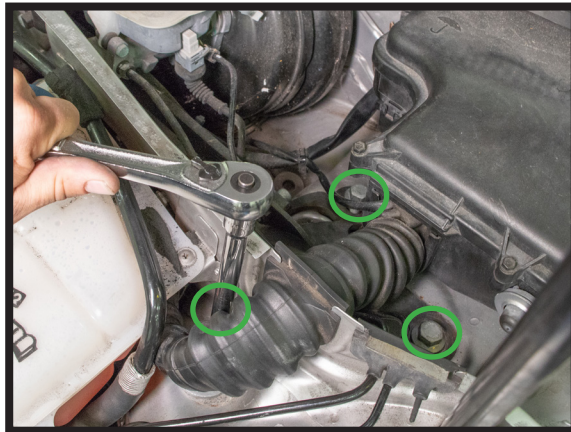


FIGURE 14

5. REMOVE THE WHITE SHIPPING PIN AND INSERT THE AIR LINE INTO THE AIR FITTING UNTIL PROPERLY SEATED. SECURE THE AIR LINE OUT OF THE WAY OF HEAT AND MOVING PARTS. (FIGURES 15, 16, 17)



FIGURE 15

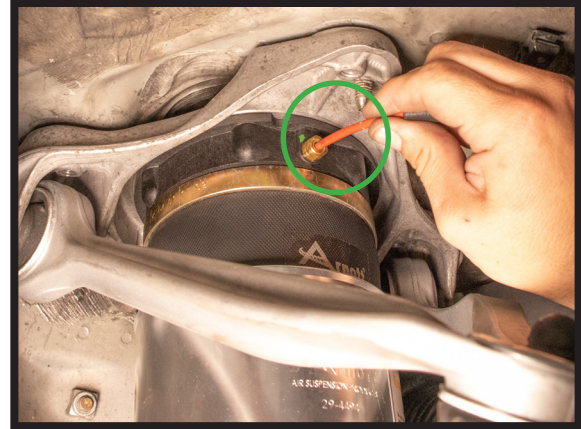


FIGURE 16



FIGURE 17

6. LOWER THE VEHICLE.  
7. INSTALL THE FRONT WHEEL.  
8. INSTALLATION COMPLETE.