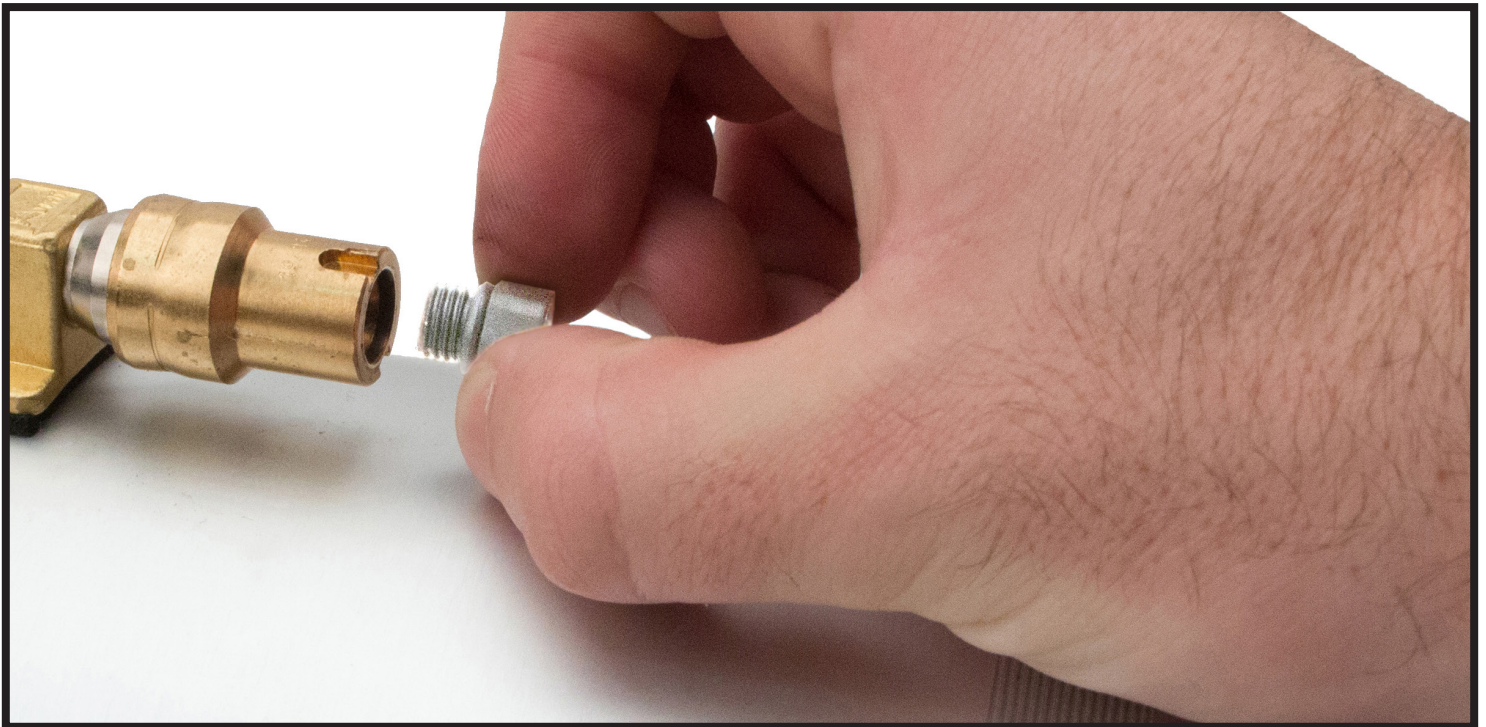


AIR LINE FITTING INSTRUCTIONS



Remove the threaded plug and discard.



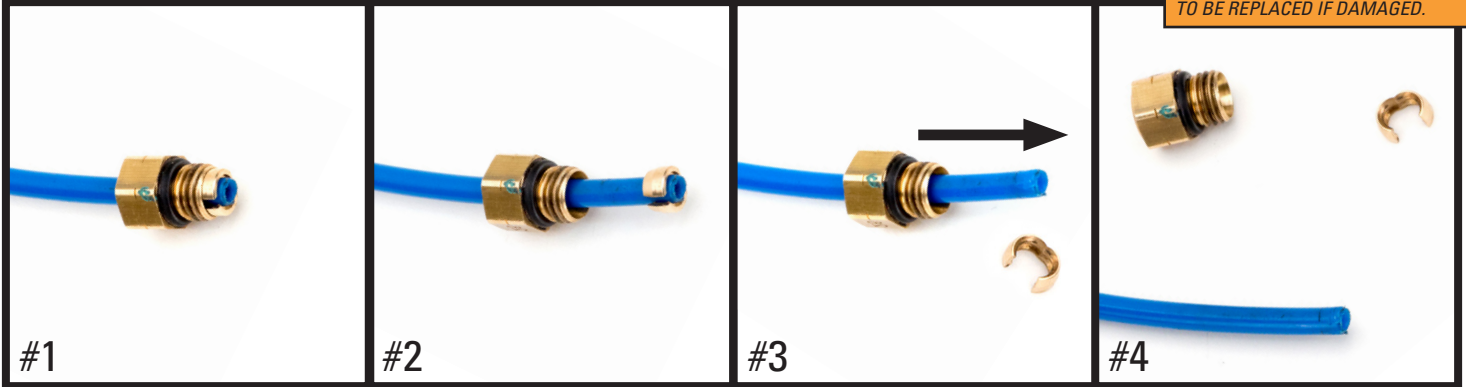
Arnott is committed to the quality of its products. If you have a question or problem with any Arnott product, please contact Arnott..

REMOVAL



Prior to inserting the existing air line into the new air fitting you will need to remove the old original equipment air line fitting.

NOTE: SCRATCHES AND/OR DEEP CUTS IN THE AIR LINE CAN RESULT IN POSSIBLE LEAKS. INSPECT THE AIR LINE BEFORE INSERTION. AIR LINE NEEDS TO BE REPLACED IF DAMAGED.



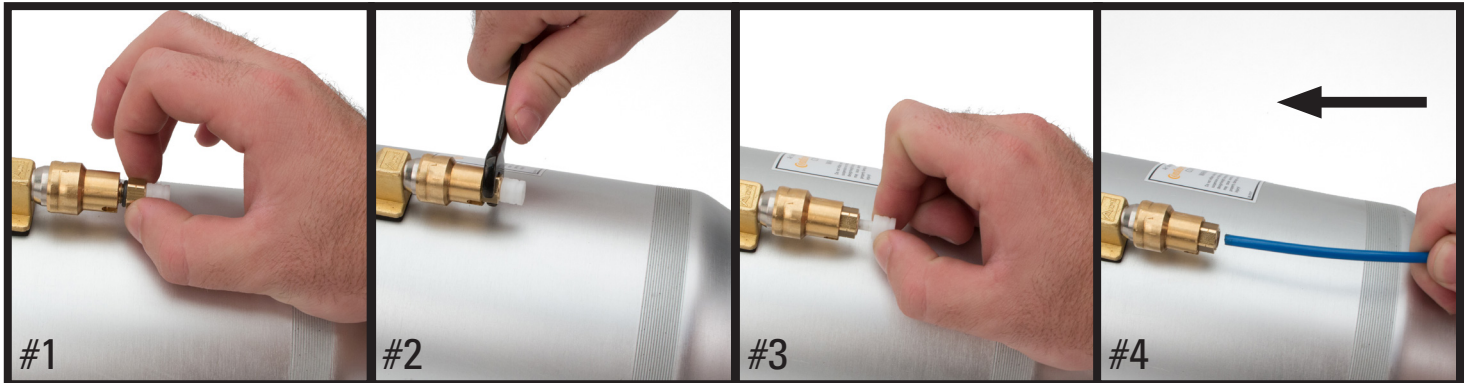
OE AIR LINE FITTING

SLIDE THE THREADED PORTION UP THE LINE AND SPREAD THE COLLET OPEN TO REMOVE

SLIDE THE AIR FITTING OFF OF THE AIR LINE

AIR LINE IS READY FOR INSTALLATION

INSTALLATION - USING THE NEW AIR LINE FITTING PROVIDED IN THE KIT

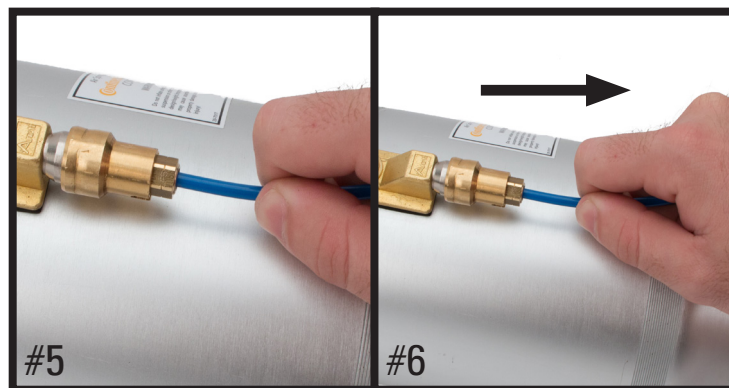


THREAD THE INCLUDED AIR LINE FITTING INTO THE VALVE

TIGHTEN FITTING TO APPROX. 2NM (18 IN-LBS/1.5 FT-LBS)

REMOVE AND DISPOSE OF THE SHIPPING PIN

INSERT AIR LINE INTO THE AIR LINE FITTING UNTIL IT STOPS



AIR LINE INSERTED

GENTLY PULL ON AIR LINE TO CONFIRM IT IS FULLY SECURED BY THE AIR LINE FITTING