

Congratulations on your purchase of an Arnott® air suspension product. We at Arnott Incorporated are proud to offer a high quality product at the industry's most competitive pricing. Thank you for your confidence in us and our product.

Proper installation is essential to experience and appreciate the benefits of this system. Please take a moment to review these installation instructions before you begin to install these components on your vehicle. The removal and installation of air suspension products should only be performed by a fully qualified, ASE Certified, professional.

It is equally important to be aware of all necessary safety measures while installing your new Air Suspension System. This includes proper lifting and immobilizing of the vehicle and isolation of any stored energy to prevent personal injury or property damage.

"Engineered to Ride, Built to Last®"



WARNING: *The air suspension system is under pressure (up to 10 bar, or 150 lbf/in). Verify pressure has been relieved and disconnect power to the air suspension system prior to disassembly. Do not allow dirt or grease to enter the system. Always wear standard hand, ear, and eye protection when servicing the air suspension system.*

Arnott® is committed to the quality of its products. If you have a question or problem with any Arnott product, please contact Arnott.

GENERAL INFORMATION:

Reading this manual signifies your agreement to the terms of the general release, waiver of liability, and hold harmless agreement.

- Not to be stored below 5°F (-15°C) or above 122°F (50°C).
- Avoid damage to air lines and cables.
- Removal and installation is only to be performed by fully qualified personnel.
- Use car manufacturer's diagnostic software.

CAUTION: *Damage to the vehicle and air suspension system can be incurred if work is carried out in a manner other than specified in the instructions or in a different sequence.*



To avoid the possibility of short circuits while working with electric components consult your owner's manual on how to disconnect your battery.



Consult your vehicle owner's manual, service manual, or car dealer for the correct jacking points on your vehicle and for additional care, safety and maintenance instructions. Under no circumstances should any work be completed underneath the vehicle if it is not adequately supported, as serious injuries and death can occur.

AIR SPRING REMOVAL

1. SET STEERING TO STRAIGHT AHEAD.
2. LIFT VEHICLE AND REMOVE REAR WHEEL.
3. DEFLATE REAR AIR SPRING BY DISCONNECTING THE AIR LINES LEADING FROM THE VALVE BLOCK ASSEMBLY TO THE REAR AIR SPRING. (FIGURE 1)



FIGURE 1

4. REMOVE THE LOCKING CLIP FROM THE TOP SIDE OF THE AIR SPRING. (FIGURE 2)



FIGURE 2

5. DISCONNECT THE AIR LINE FROM THE AIR SPRING. REMOVE THE LOCKING CLIP FROM THE AIR LINE. (FIGURE 3)

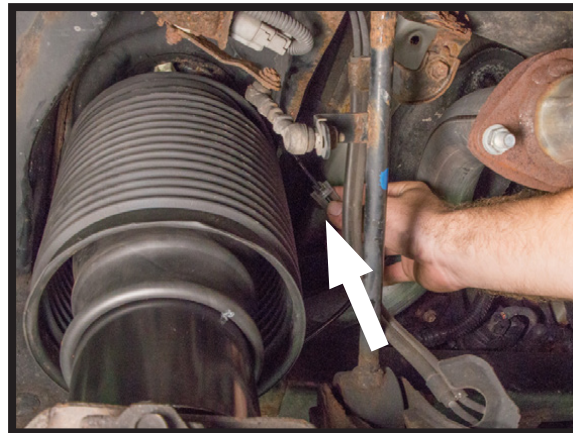


FIGURE 3

6. CAREFULLY COMPRESS AND REMOVE THE AIR SPRING FROM THE VEHICLE. (FIGURE 4)

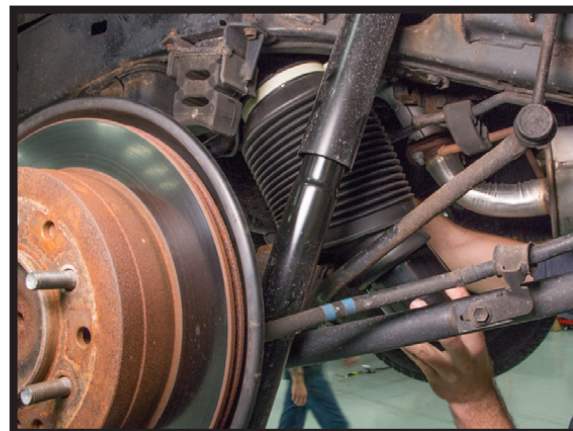





FIGURE 4

AIR SPRING INSTALLATION

-  *Tighten all nuts and bolts to manufacturer's specifications during the installation process.*
-  *Install air line into new air line fitting until fully secure.*
-  *Damage to the vehicle and air suspension system can be incurred if work is carried out in a manner other than specified in the instructions or in a different sequence.*

1. INSTALL THE AIR SPRING INTO THE VEHICLE AND CONNECT THE AIR LINE TO THE NEW AIR FITTING. (FIGURES 5, 6)

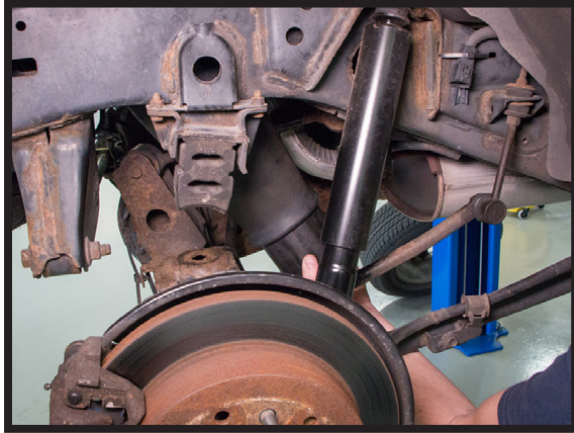


FIGURE 5

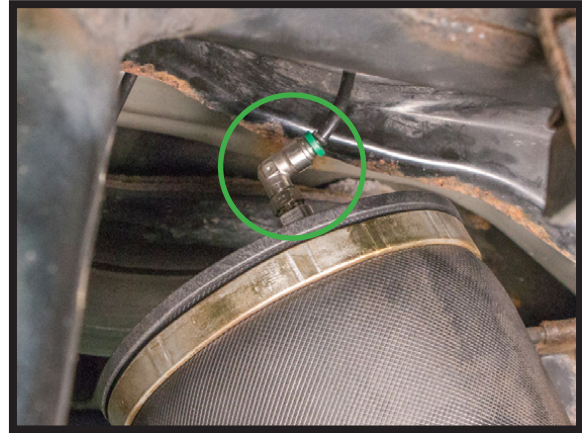


FIGURE 6

2. ALIGN THE BOTTOM PISTON TABS WITH THE NOTCHES ON THE LOWER SPRING PERCH. (FIGURES 7, 8)

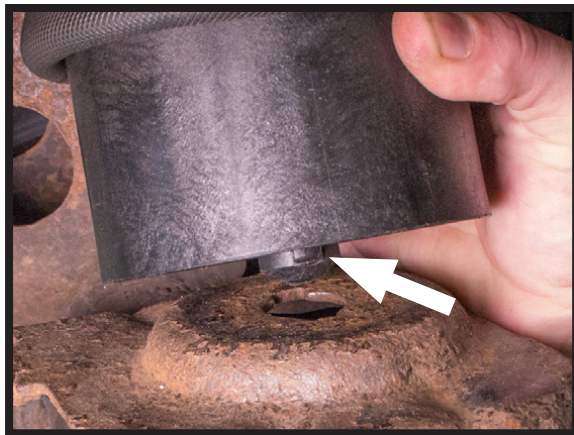


FIGURE 7



FIGURE 8

3. SEAT THE SPRING AND ROTATE 90° TO SECURE. (FIGURES 9, 10)



FIGURE 9



FIGURE 10

4. SEAT THE UPPER PORTION OF THE AIR SPRING AND INSTALL THE UPPER RETAINING CLIP. (FIGURES 11, 12)



FIGURE 11



FIGURE 12

5. AIR SPRING INSTALLATION COMPLETE.